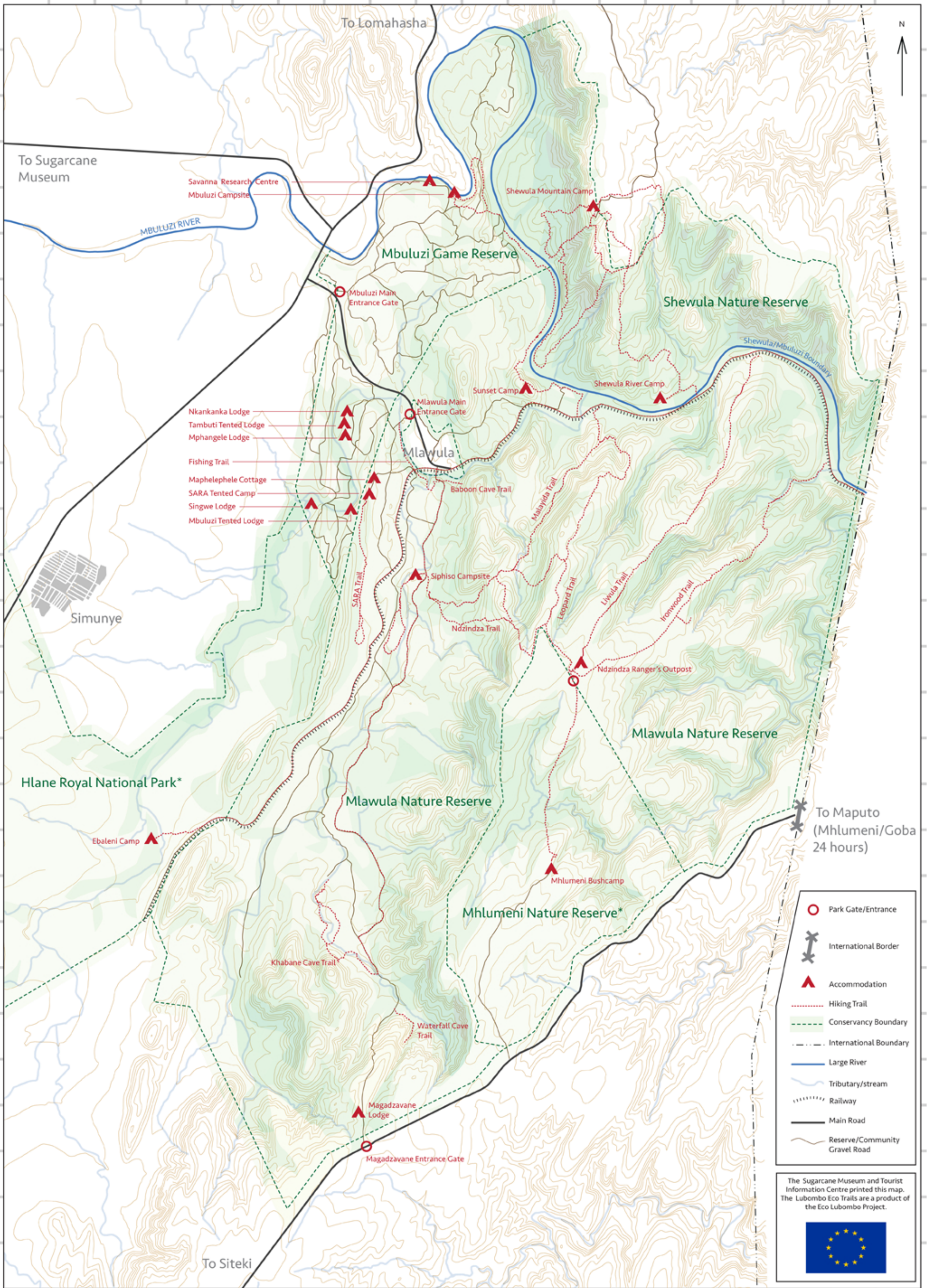


Lubombo Conservancy Hiking Trails



The Sugarcane Museum

Open every day from 09:00 - 16:30
 Closed Christmas and Incwala
 Landline: 23737334, Cell: 76894611
 Website: www.sugarcanemuseum.com
 Email: info@sugarcanemuseum.com
 Tambankulu, Swaziland



	Park Gate/Entrance
	International Border
	Accommodation
	Hiking Trail
	Conservancy Boundary
	International Boundary
	Large River
	Tributary/stream
	Railway
	Main Road
	Reserve/Community Gravel Road

The Sugarcane Museum and Tourist Information Centre printed this map. The Lubombo Eco Trails are a product of the Eco Lubombo Project.




* Hlane Royal National Park offers guided walks.
 * Mhlumeni Bushcamp offers guided walks.
 Designed and assembled by Mbongeni Dlamini, 2017.
 Sources: Surveyor General's Department, Swaziland, All Out Africa, Lubombo Eco Trails, Google Earth.