

Preliminary Swaziland Moths Checklist - PROVISIONAL - January 2019

Part 2: Drepanoidea and Geometroidea

Drepanoidea

Drepanidae: Drepaninae

Epicampoptera notialis Watson, 1965
Malolotja and Mlawula Checklists

Drepanidae: Thyatirinae

Aethiopsestis austrina austrina Watson, 1965
Malolotja and Mlawula Checklists
(*Aethiopsestis austrina*)

Geometroidea

Geometridae: Desmobathrinae

Conolophia aemula (Warren, 1894)
UCT-ADU LepiMap
• UCT-ADU LepiMAP; Pine Valley; 29/12/2016; Kate Braun; LepiMAP 611416



Conolophia consictaria (Walker, 1861)
Malolotja and Mlawula Checklists
• UCT-ADU LepiMAP; Pine Valley; 04/02/2017; Kate Braun; LepiMAP 614685
• UCT-ADU LepiMAP; Pine Valley; 10/12/2017; Kate Braun; LepiMAP 635814



Ozola pulverulenta Warren, 1897
Malolotja and Mlawula Checklists
• ZSM BOLD BC ZSM Lep 32379; Mbuluzi Game Reserve; B. Skule; BOLD

Geometridae: Ennominae

Euexia percnopus percnopus Prout L. B., 1915
Afromoths: Krüger (2001a)
• AfroMoths; Siteki; 07/02/1992; N J Duke;
• UCT-ADU LepiMAP; Rosecraft Farm; 08/11/2018; Kate Braun; LepiMAP 661984



Hebdomophruda curvilinea Warren, 1897
Afromoths: TMSA

Henicovalva mpisiensis Krüger, 2017
Afromoths
• AfroMoths; Mpisi; 26/01/1991; N J Duke;

Obolcola decisa (Warren, 1914)
UCT-ADU LepiMap
• UCT-ADU LepiMAP; Pine Valley; 12/04/2017; Kate Braun; LepiMAP 620830
• UCT-ADU LepiMAP; Pine Valley; 23/01/2018; Kate Braun; LepiMAP 639658
• UCT-ADU LepiMAP; Pine Valley; 24/02/2018; Kate Braun; LepiMAP 641456



Geometridae: Ennominae: Abraxini

Ligdia batesii Wallengren, 1875
Malolotja and Mlawula Checklists



Ligdia pectinicornis Prout L. B., 1913
Malolotja and Mlawula Checklists
• UCT-ADU LepiMAP; Mlawula; 18/01/2017; Kate Braun; LepiMAP 612651
• UCT-ADU LepiMAP; Pine Valley; 24/01/2017; Kate Braun; LepiMAP 613217



Geometridae: Ennominae: Boarmiini

Anacleora extremaria (Walker, 1860)
Malolotja and Mlawula Checklists

Aphilopota interpellans (Butler, 1875)
Malolotja and Mlawula Checklists

Aphilopota patulata patulata (Walker, 1863)
Malolotja and Mlawula Checklists
(*Aphilopota patulata*)

Aphilopota semiusta (Distant, 1898)
Malolotja and Mlawula Checklists



Aphilopota subalbata (Warren, 1905)
Malolotja and Mlawula Checklists

Ascotis reciprocaria (Walker, 1860)
Malolotja and Mlawula Checklists
• UCT-ADU LepiMAP; Phophonyane; 03/02/2006; Roland H; LepiMAP 556574
• UCT-ADU LepiMAP; Rosecraft Farm; 08/11/2018; Kate Braun; LepiMAP 661922
• UCT-ADU LepiMAP; Rosecraft Farm; 08/11/2018; Kate Braun; LepiMAP 661960



Ascotis selenaria (Denis & Schiffermüller, 1775)
UCT-ADU LepiMap
• UCT-ADU LepiMAP; Rosecraft Farm; 08/11/2018; Kate Braun; LepiMAP 661964



Cerurographa bistonica (Prout L. B., 1922)
Malolotja and Mlawula Checklists

Cleora betularia (Warren, 1897)
Malolotja and Mlawula Checklists



Cleora cancer Fletcher D. S., 1967
Malolotja and Mlawula Checklists

Cleora flavivenata Fletcher D. S., 1967
Malolotja and Mlawula Checklists



Cleora herbuloti phaea Fletcher D. S., 1967
Malolotja and Mlawula Checklists

Cleora munda (Warren, 1899)
Malolotja and Mlawula Checklists
• UCT-ADU LepiMAP; Mlawula; 18/01/2017; Kate Braun; LepiMAP 612654



Cleora nigriparsalis (Janse, 1932)
Malolotja and Mlawula Checklists



Cleora tulbaghata (Felder & Rogenhofer, 1875)
Malolotja and Mlawula Checklists

Colocleora diversaria (Walker, 1860)
Malolotja and Mlawula Checklists

Colocleora proximaria proximaria (Walker, 1860)
Malolotja and Mlawula Checklists
(*Colocleora proximaria*)



***Colocleora* sp.**
Malolotja and Mlawula Checklists

Eulycia grisea grisea (Warren, 1897)
UCT-ADU LepiMap
• UCT-ADU LepiMAP; Phophonyane; 03/02/2006; Roland H; LepiMAP 556582



Eulycia subpunctata (Warren, 1897)
UCT-ADU LepiMap
• UCT-ADU LepiMAP; Mlawula; 18/01/2017; Kate Braun; LepiMAP 612663
• UCT-ADU LepiMAP; Pine Valley; 20/03/2017; Kate Braun; LepiMAP 618579



Hypomecis ectropodes (Prout L. B., 1913)
Malolotja and Mlawula Checklists
(*Boarmia ectropodes*)

Menophra jansei Herbulot, 1997
UCT-ADU LepiMap
• UCT-ADU LepiMAP; Pine Valley; 31/12/2018; Kate Braun; LepiMAP 667117



Menophra obtusata (Warren, 1902)
Malolotja and Mlawula Checklists

Oedicentra albipennis Warren, 1902
Malolotja and Mlawula Checklists
• UCT-ADU LepiMAP; Pine Valley; 29/09/2018; Kate Braun; LepiMAP 658910



Omphalucha indeflexa Prout L. B., 1922
UCT-ADU LepiMap
• UCT-ADU LepiMAP; Mlawula; 06/01/2018; Kate Braun; LepiMAP 638920



Omphalucha maturnaria (Möschler, 1884)
Malolotja and Mlawula Checklists

Orbamia octomaculata (Wallengren, 1872)
Malolotja and Mlawula Checklists



Palaeonyssia trisecta (Warren, 1897)
Malolotja and Mlawula Checklists

Parectropis delosaria (Walker, 1863)
Malolotja and Mlawula Checklists
(*Ectropis delosaria*)

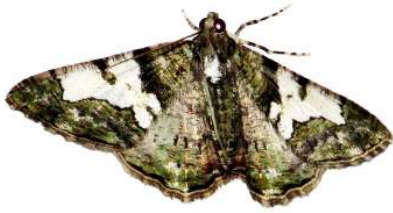
Xylopteryx arcuata (Walker, 1862)
Malolotja and Mlawula Checklists
• UCT-ADU LepiMAP; Pine Valley; 13/08/2017; Kate Braun; LepiMAP 630036
• UCT-ADU LepiMAP; Pine Valley; 13/08/2017; Kate Braun; LepiMAP 630039
• UCT-ADU LepiMAP; Pine Valley; 22/09/2017; Kate Braun; LepiMap 632133
• UCT-ADU LepiMAP; Pine Valley; 04/02/2017; Kate Braun; LepiMAP 614658
• UCT-ADU LepiMAP; Pine Valley; 12/04/2017; Kate Braun; LepiMAP 620826
• UCT-ADU LepiMAP; Pine Valley; 12/04/2017; Kate Braun; LepiMAP 620833



Xylopteryx prasinaria Hampson, 1909

Malolotja and Mlawula Checklists

- UCT-ADU LepiMAP; Pine Valley; 12/08/2017; Kate Braun; LepiMAP 629985



Xylopteryx protearia Guenée, 1857

Malolotja and Mlawula Checklists



Zeuctoboarmia hyrax (Townsend, 1952)

Malolotja and Mlawula Checklists

Geometridae: Ennominae: Caberini

Cabera elatina (Prout L. B., 1913)

Afromoths: Krüger (2001a)

Cabera strigata (Warren, 1897)

Malolotja and Mlawula Checklists

- UCT-ADU LepiMAP; Pine Valley; 09/12/2017; Kate Braun; LepiMAP 635779



Erastria leucicolor leucicolor (Butler, 1875)

Malolotja and Mlawula Checklists;

Afromoths: TMSA

(*Petrodava leucicolor*)



Erastria madecassaria (Warren, 1897)

Malolotja and Mlawula Checklists

(*Petrodava madecassaria*)

- UCT-ADU LepiMAP; Mlawula; 02/07/2017; Kate Braun; LepiMAP 629922
- UCT-ADU LepiMAP; Phophonyane; 13/12/2018; Kate Braun; LepiMAP 665162



Lhommeia subapicata subapicata (Warren, 1899)

UCT-ADU LepiMap

- UCT-ADU LepiMAP; Mlawula; 22/04/2014; Kate Braun; LepiMAP 44939



Lomographa aridata (Warren, 1897)

UCT-ADU LepiMap

- UCT-ADU LepiMAP; Pine Valley; 17/02/2017; Kate Braun; LepiMAP 615870



Lomographa indularia (Guenée, 1858)

Malolotja and Mlawula Checklists

- UCT-ADU LepiMAP; Mlawula; 05/10/2018; Kate Braun; LepiMAP 659841



Geometridae: Ennominae: Cassymini

Heterostegane rectistriga Prout L. B., 1913

Malolotja and Mlawula Checklists

- UCT-ADU LepiMAP; Pine Valley; 09/12/2017; Kate Braun; LepiMAP 635790
- UCT-ADU LepiMAP; Pine Valley; 24/12/2017; Kate Braun; LepiMAP 636921
- UCT-ADU LepiMAP; Pine Valley; 18/12/2017; Kate Braun; LepiMAP 636518
- UCT-ADU LepiMAP; Pine Valley; 16/10/2017; Kate Braun; LepiMAP 633196
- UCT-ADU LepiMAP; Malolotja; 02/02/2017; Kate Braun; LepiMAP 614362
- UCT-ADU LepiMAP; Pine Valley; 09/10/2016; Kate Braun; LepiMAP 605299



Zamarada bathyscaphes Prout L. B., 1912

UCT-ADU LepiMap Swaziland Species List Nov 2016

(*Zamarada perplexa*)

Zamarada differens Bastelberger, 1907

Malolotja and Mlawula Checklists



Zamarada plana denticincta Bastelberger,

1909

Malolotja and Mlawula Checklists

Zamarada pulverosa Warren, 1895

Malolotja and Mlawula Checklists



Zamarada varii Fletcher D. S., 1974

Malolotja and Mlawula Checklists



Zamarada sp.

UCT-ADU LepiMap

- UCT-ADU LepiMAP; Pine Valley; 17/12/2017; Kate Braun; LepiMAP 636451



Geometridae: Ennominae: Diptychini

Callioratis abraxas abraxas Felder, 1874

Afromoths



Zerenopsis lepida (Walker, 1854)
Afromoths: Zolotuhin & Gurkovich (2009)



Zerenopsis meraca Prout L. B., 1928
Afromoths: Zolotuhin & Gurkovich (2009)

Geometridae: Ennominae: Ennomini

Psilocerea immitata Janse, 1932
Malolotja and Mlawula Checklists;
Afromoths: Joannou & Gurkovich (2009)

Psilocerea pulverosa (Warren, 1894)
Malolotja and Mlawula Checklists;
Afromoths: Joannou & Krüger (2009)

- UCT-ADU LepiMAP; Mlawula; 23/03/2014; Kate Braun; LepiMAP 42133
- UCT-ADU LepiMAP; Mlawula; 23/04/2014; Kate Braun; LepiMAP 44956
- UCT-ADU LepiMAP; Mlawula; 28/12/2014; Kate Braun; LepiMAP 559319
- UCT-ADU LepiMAP; Mlawula; 28/02/2015; Kate Braun; LepiMAP 564411



Geometridae: Ennominae: Eutoeini

Idiotephra hondensis Krüger, 2000
Afromoths: Krüger (1999)

Geometridae: Ennominae: Gnophini

Aspitates illipidata Walker, 1862
Malolotja and Mlawula Checklists

Hypotephrina exmotaria (Walker, 1861)
Afromoths: Krüger (1999)

Geometridae: Ennominae: Gonodontini

Psilocladia obliquata Warren, 1898
Malolotja and Mlawula Checklists

- UCT-ADU LepiMAP; Pine Valley; 04/01/2019; Kate Braun; LepiMAP 667854



Xenimpia erosa Warren, 1895
Malolotja and Mlawula Checklists;
Afromoths: Joannou & Krüger (2009)



**Geometridae: Ennominae:
Hypochrosini**

Epigynopteryx maeviaria maeviaria
(Guenée, 1858)
Malolotja and Mlawula Checklists
(*Epigynopteryx maeviaria*)

Epigynopteryx ommatoclesis (Prout L. B.,
1922)
Malolotja and Mlawula Checklists
(*Eurythecodes ommatoclesis*)

Omizodes ocellata Warren, 1894
Malolotja and Mlawula Checklists



Geometridae: Ennominae: Lithinini

Idiodes saxaria (Guenée, 1858)
Malolotja and Mlawula Checklists
(*Nopia saxaria*)

Pareclipsis distolochorda Prout L. B., 1916
Afromoths: Krüger (2009)

Pareclipsis ochrea (Warren, 1905)
Afromoths: Krüger (1999)

Pareclipsis punctata Warren, 1900
Malolotja and Mlawula Checklists,
Afromoths: TMSA

- AfroMoths; Malagwane Hill; 10/05/1992; N J Duke;

Geometridae: Ennominae: Macariini

Acanthovalva inconspicuaria (Hübner,
1819)
Malolotja and Mlawula Checklists;
Afromoths: Krüger (2013)
(*Tephрина inconspicuaria*, *Isturgia
inconspicuaria*)

- UCT-ADU LepiMAP; Mlawula; 21/05/2011; Kate

Braun; LepiMAP 18048



Chiasmia abnormata (Prout L. B., 1917)
Malolotja and Mlawula Checklists;
Afromoths: Krüger (2001a)
(*Macaria abnormata*)

Chiasmia assimilis (Warren, 1899)
Malolotja and Mlawula Checklists;
Afromoths: Krüger (2001a)
(*Macaria assimilis*)



Chiasmia brongusaria brongusaria (Walker,
1860)
Malolotja and Mlawula Checklists;
Afromoths: Krüger (2001a)
(*Macaria brongusaria*)



Chiasmia confusata (Warren, 1899)
Afromoths: Krüger (2001a)

Chiasmia deceptrix (Krüger, 2001)
UCT-ADU LepiMap

- UCT-ADU LepiMAP; Jilobi; 28/01/2014; Kate Braun; LepiMAP 39710



Chiasmia furcata (Warren, 1897)
UCT-ADU LepiMap

- UCT-ADU LepiMAP; Mlawula; 26/12/2014; Kate Braun; LepiMAP 559299
- UCT-ADU LepiMAP; Mlawula; 23/04/2014; Kate Braun; LepiMAP 44958
- UCT-ADU LepiMAP; Mlawula; 03/12/2012; Kate Braun; LepiMAP 20274
- UCT-ADU LepiMAP; Mlawula; 27/12/2013; Kate Braun; LepiMAP 38573
- UCT-ADU LepiMAP; Mlawula; 27/12/2013; Kate Braun; LepiMAP 38509



Chiasmia interrupta (Warren, 1897)
Afrotho: Krüger (2001a)

Chiasmia johnstoni (Butler, 1893)
Malolotja and Mlawula Checklists;
Afrotho: Krüger (2001a)
(*Macaria johnstoni*)

Chiasmia kilimanjarensis (Holland, 1892)
Afrotho: Krüger (2001a)

Chiasmia kirbyi (Wallengren, 1875)
UCT-ADU LepiMAP; Afrotho: Krüger
(2001a)

Chiasmia multistrigata multistrigata
(Warren, 1897)
Malolotja and Mlawula Checklists
(*Macaria multistrigata*)



Chiasmia nobilitata (Prout L. B., 1913)
Malolotja and Mlawula Checklists;
Afrotho: Krüger (2001a)
(*Macaria nobilitata*)

Chiasmia normata (Walker, 1861)
Malolotja and Mlawula Checklists;
Afrotho: Krüger (2001a)
(*Macaria normata*)

- UCT-ADU LepiMAP; Malolotja; 20/03/2010; Webb P.; LepiMAP 11931
- UCT-ADU LepiMAP; Mlawula; 22/04/2016; Kate Braun; LepiMAP 595092
- UCT-ADU LepiMAP; Pine Valley; 18/03/2017; Kate Braun; LepiMAP 618322
- UCT-ADU LepiMAP; Pine Valley; 20/04/2017; Kate Braun; LepiMAP 622009



Chiasmia procidata semispurcata (Walker, 1863)
Malolotja and Mlawula Checklists
(*Macaria procidata*)

Chiasmia rectistriaria (Herrich-Schöffer, 1854)

- UCT-ADU LepiMAP; Lubombo Mountains, Jilobi; 28/01/2014; Kate Braun; LepiMAP 39709



Chiasmia simplicilinea simplicilinea
(Warren, 1905)
Malolotja and Mlawula Checklists;
Afrotho: Krüger (2001a)
(*Macaria simplicilinea*)

- UCT-ADU LepiMAP; Pine Valley; 15/01/2017; Kate Braun; LepiMAP 612504
- UCT-ADU LepiMAP; Pine Valley; 04/02/2017; Kate Braun; LepiMAP 614659
- UCT-ADU LepiMAP; Pine Valley; 24/01/2018; Kate Braun; LepiMAP 639724
- UCT-ADU LepiMAP; Pine Valley; 24/02/2018; Kate Braun; LepiMAP 641452
- UCT-ADU LepiMAP; Pine Valley; 18/03/2018; Kate Braun; LepiMAP 643158



Chiasmia sororcula (Warren, 1897)
Malolotja and Mlawula Checklists
(*Macaria sororcula*)

Chiasmia streniata streniata (Guenée, 1858)
Malolotja and Mlawula Checklists
(*Macaria streniata*)

- UCT-ADU LepiMAP; Pine Valley; 30/11/2008; Kate Braun; LepiMAP 10784
- UCT-ADU LepiMAP; Pine Valley; 06/02/2016; Kate Braun; LepiMAP 587944
- UCT-ADU LepiMAP; Pine Valley; 02/04/2016; Kate Braun; LepiMAP 592323
- UCT-ADU LepiMAP; Pine Valley; 27/12/2017; Kate Braun; LepiMAP 637285
- UCT-ADU LepiMAP; Pine Valley; 12/01/2018; Kate Braun; LepiMAP 638948



Chiasmia subcurvaria subcurvaria (Mabille, 1898)

(*Chiasmia subcurvaria*)



Chiasmia suriens (Strand, 1912)
Afrotho: Krüger (2002)

Chiasmia trizonaria (Hampson, 1909)
Malolotja and Mlawula Checklists;
Afrotho: Krüger (2002)
(*Macaria trizonaria*)

Chiasmia umbrata umbrata (Warren, 1897)
Malolotja and Mlawula Checklists;
Afrotho: Krüger (2002)
(*Macaria umbrata*)

- UCT-ADU LepiMAP; Phophonyane; 05/02/2006; Roland H; LepiMAP 556583
- UCT-ADU LepiMAP; Pine Valley; 18/03/2017; Kate Braun; LepiMAP 618311
- UCT-ADU LepiMAP; Pine Valley; 21/04/2017; Kate Braun; LepiMAP 622066
- UCT-ADU LepiMAP; Pine Valley; 23/04/2017; Kate Braun; LepiMAP 622358
- UCT-ADU LepiMAP; Pine Valley; 14/01/2018; Kate Braun; LepiMAP 639151
- UCT-ADU LepiMAP; Pine Valley; 19/01/2018; Kate Braun; LepiMAP 639464
- UCT-ADU LepiMAP; Pine Valley; 27/02/2018; Kate Braun; LepiMAP 641579
- UCT-ADU LepiMAP; Pine Valley; 09/03/2018; Kate Braun; LepiMAP 642602
- UCT-ADU LepiMAP; Pine Valley; 18/03/2018; Kate Braun; LepiMAP 643167
- UCT-ADU LepiMAP; Pine Valley; 05/05/2018; Kate Braun; LepiMAP 647669



Chiasmia umbratilis (Butler, 1875)
UCT-ADU LepiMAP; Afrotho: Krüger
(2002)

- UCT-ADU LepiMAP; Mlawula; 01/01/2013; Kate Braun; LepiMAP 27349



Isturgia catalaunaria (Guenée, 1858)
Malolotja and Mlawula Checklists
(*Tephria catalaunaria*)

- UCT-ADU LepiMAP; Mlawula; 03/04/2010; Kate

Braun; LepiMAP 12324

- UCT-ADU LepiMAP; Mucucene Hills; 15/05/2015; Kate Braun; LepiMAP 572264



Isturgia deerraria (Walker, 1861)
Malolotja and Mlawula Checklists;
Afromoths: TMSA
(*Tephрина deerraria*)

- UCT-ADU LepiMAP; Pine Valley; 07/01/2016; Kate Braun; LepiMAP 586983
- UCT-ADU LepiMAP; Pine Valley; 12/01/2016; Kate Braun; LepiMAP 587007
- UCT-ADU LepiMAP; Pine Valley; 03/02/2017; Kate Braun; LepiMAP 614433
- UCT-ADU LepiMAP; Mlawula; 23/04/2011; Kate Braun; LepiMAP 17422



Isturgia exospilata (Walker, 1861)
Malolotja and Mlawula Checklists
(*Tephрина exospilata*)

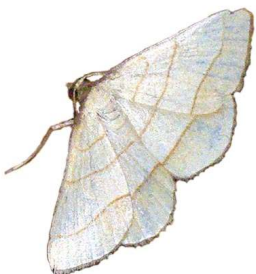
Isturgia spissata (Walker, 1862)
Afromoths: TMSA

Isturgia supergressa (Prout L. B., 1913)
Malolotja and Mlawula Checklists;
Afromoths: TMSA
(*Tephрина supergressa*)



*

Plateoplia acrobelia (Wallengren, 1875)
UCT-ADU LepiMap; Afromoths: TMSA
• UCT-ADU LepiMAP; Pine Valley; 01/01/2010; Kate Braun; LepiMAP 10906



Platypepla persubtilis Krüger, 2001

Afromoths: Staude & Sihvonen (2014)

Geometridae: Ennominae: Nacophorini

Acrasia ava (Prout L. B., 1938)
Malolotja and Mlawula Checklists;
Afromoths: Krüger (2013)
(*Mauna ava*)

Acrasia crinita Felder & Rogenhofer, 1875
Malolotja and Mlawula Checklists;
Afromoths: Krüger (1999)

Acrasia robusta Krüger, 2013
Afromoths: Krüger (1999)

Argyrophora trofonia (Cramer, 1779)
Malolotja and Mlawula Checklists;
Afromoths: TMSA

Argyrophora variabilis Krüger, 1999
Afromoths: Staude (2001)

Dispatha pelopasta Krüger, 2014
Afromoths: Krüger (2002)

Drepanogynis admiranda (Warren, 1905)
Malolotja and Mlawula Checklists;
Afromoths: Krüger (2002)
(*Aspilatopsis admiranda*)

- UCT-ADU LepiMAP; Pine Valley; 27/12/2017; Kate Braun; LepiMAP 637268
- UCT-ADU LepiMAP; Pine Valley; 11/10/2018; Kate Braun; LepiMAP 660294
- UCT-ADU LepiMAP; Pine Valley; 11/10/2018; Kate Braun; LepiMAP 660296



Drepanogynis antennaria (Guenée, 1858)
Malolotja and Mlawula Checklists
(*Aspilatopsis antennaria*)

Drepanogynis arcuifera Prout L. B., 1934
Malolotja and Mlawula Checklists;
Afromoths: Krüger (2002)

Drepanogynis biviaris (Guenée, 1858)
UCT-ADU LepiMAP
• UCT-ADU LepiMAP; Pine Valley; 25/12/2018; Kate Braun; LepiMAP 666272



Drepanogynis cambogiaria (Guenée, 1858)
Afromoths: Krüger (2002)



*

Drepanogynis chromatina (A.E. Prout, 1913)
Malolotja and Mlawula Checklists;
Afromoths: Krüger (2002)

- UCT-ADU LepiMAP; Pine Valley; 15/10/2015; Kate Braun; LepiMAP 579903
- UCT-ADU LepiMAP; Pine Valley; 01/10/2018; Kate Braun; LepiMAP 659275



Drepanogynis costipicta olearis (Prout L. B., 1938)
Afromoths: Krüger (2002)



*

Drepanogynis determinata (Walker, 1860)
Malolotja and Mlawula Checklists;
Afromoths: Krüger (2002)
(*Eupagia determinata*)



*

Drepanogynis devia (Prout L. B., 1913)
Malolotja and Mlawula Checklists;
Afromoths: Krüger (2002)

Drepanogynis epione (Prout L. B., 1913)
Malolotja and Mlawula Checklists
• UCT-ADU LepiMAP; Malolotja; 02/02/2017; Kate Braun; LepiMAP 614366



Drepanogynis gloriola (Prout L. B., 1913)
Malolotja and Mlawula Checklists;
AfroMoths: Krüger (2002)
(*Aspilatopsis gloriola*)

Drepanogynis hypenissa (Butler, 1875)
Malolotja and Mlawula Checklists;
AfroMoths: Krüger (2002)
(*Derrioides hypenissa*)

Drepanogynis latipennis Krüger, 2002
AfroMoths: Krüger (2002)
• AfroMoths; Malolotja; 24/04/1995; N J Duke;



Drepanogynis leptodoma Prout L. B., 1917
AfroMoths: TMSA

Drepanogynis mixtaria Guenée, 1858
Malolotja and Mlawula Checklists;
AfroMoths: Krüger (2000a)



Drepanogynis olivescens (Warren, 1898)
AfroMoths



Drepanogynis orthobates (Prout L. B., 1917)
Malolotja and Mlawula Checklists
(*Aspilatopsis orthobates*)

Drepanogynis prouti Krüger, 2002
Malolotja and Mlawula Checklists
(*Drepanogynis tripartita*)

Drepanogynis punctata (Warren, 1897)
AfroMoths: Krüger (1998)

Drepanogynis subroseoides Krüger, 2015
AfroMoths: Krüger (2000d)
(*Drepanogynis subrosea*)

• AfroMoths; Malolotja; 24/04/1995; N J Duke;

Drepanogynis variciliata Krüger, 2002
AfroMoths: Krüger (2014)

• AfroMoths; Mbabane; 10/04/1997; N J Duke;



***Drepanogynis* sp.**
UCT-ADU LepiMAP

- UCT-ADU LepiMAP; Pine Valley; 16/03/2018; Kate Braun; LepiMAP 642833
- UCT-ADU LepiMAP; Pine Valley; 30/01/2017; Kate Braun; LepiMAP 614117



- UCT-ADU LepiMAP; Rosecraft Farm; 08/11/2018; Kate Braun; LepiMAP 661970



Eutelostolmus pictifimbria (Prout L. B., 1938)
Malolotja and Mlawula Checklists;
AfroMoths: Krüger (2001a)
(*Mauna pictifimbria*)

Illa perquisita (Prout L. B., 1922)
Malolotja and Mlawula Checklists
(*Mauna perquisita*)

Illa reprobata (Prout L. B., 1938)
AfroMoths: TMSA

Micrologia confinis Krüger, 1999
AfroMoths: Krüger (2001a)
• AfroMoths; Malolotja; 31/12/1992; N J Duke;

Micrologia dolosa Warren, 1897
Malolotja and Mlawula Checklists

Micrologia luteitincta Prout L. B., 1916
Malolotja and Mlawula Checklists;
AfroMoths: Krüger (2001a)

Pseudomaenas immundoides Krüger, 2009
AfroMoths: Staude & Sihvonen (2014)
• AfroMoths; Malolotja; 04/03/1993; N J Duke;

Pseudomaenas oncodogramma Prout L. B., 1917
Malolotja and Mlawula Checklists;

AfroMoths: TMSA

Terpnostola ardescens (Prout L. B., 1916)
Malolotja and Mlawula Checklists;
AfroMoths: Joannou & Krüger (2009)
(*Mauna ardescens*)

Geometridae: Ennominae: Scardamiini

Oaracta maculata (Warren, 1897)
iNaturalist

- iNaturalist; Malagwane Hill; 03/08/2017; Stan van Remmerden; iNaturalist 9600883

Oaracta neophronaria (Oberthür, 1912)
Malolotja and Mlawula Checklists

***Oaracta* sp.**
UCT-ADU LepiMap

- UCT-ADU LepiMAP; Phophonyane; 13/12/2018; Kate Braun; LepiMAP 665196



Geometridae: Geometrinae

Acollesis fraudulenta Warren, 1898
Malolotja and Mlawula Checklists



Acollesis terminata Prout L. B., 1912
Malolotja and Mlawula Checklists

Rhadinophax divincta (Walker, 1861)
Malolotja and Mlawula Checklists

**Geometridae: Geometrinae:
Comibaenini**

Comibaena leucospilata (Walker, 1863)
Malolotja and Mlawula Checklists



**Geometridae: Geometrinae:
Comostolini**

Comostolopsis stillata stillata (Felder & Rogenhofer, 1875)
Malolotja and Mlawula Checklists
(*Comostolopsis stillata*)

- UCT-ADU LepiMAP; Pine Valley; 09/12/2017; Kate Braun; LepiMAP 635804

- UCT-ADU LepiMAP; Pine Valley; 27/10/2018; Kate Braun; LepiMAP 660956
- UCT-ADU LepiMAP; Pine Valley; 14/03/2018; Kate Braun; LepiMAP 642777
- UCT-ADU LepiMAP; Pine Valley; 13/03/2018; Kate Braun; LepiMAP 642723
- UCT-ADU LepiMAP; Pine Valley; 09/03/2018; Kate Braun; LepiMAP 642582
- UCT-ADU LepiMAP; Pine Valley; 24/02/2018; Kate Braun; LepiMAP 641451
- UCT-ADU LepiMAP; Pine Valley; 09/02/2018; Kate Braun; LepiMAP 640515
- UCT-ADU LepiMAP; Pine Valley; 21/03/2017; Kate Braun; LepiMAP 618664
- UCT-ADU LepiMAP; Pine Valley; 01/02/2018; Kate Braun; LepiMAP 640097
- UCT-ADU LepiMAP; Pine Valley; 14/01/2018; Kate Braun; LepiMAP 639173
- UCT-ADU LepiMAP; Pine Valley; 03/01/2018; Kate Braun; LepiMAP 637949
- UCT-ADU LepiMAP; Pine Valley; 16/02/2015; Kate Braun; LepiMAP 563569
- UCT-ADU LepiMAP; Pine Valley; 13/08/2017; Kate Braun; LepiMAP 630018
- UCT-ADU LepiMAP; Pine Valley; 20/12/2014; Kate Braun; LepiMAP 559287
- UCT-ADU LepiMAP; Pine Valley; 31/01/2017; Kate Braun; LepiMAP 614162
- UCT-ADU LepiMAP; Pine Valley; 25/02/2017; Kate Braun; LepiMAP 617097
- UCT-ADU LepiMAP; Pine Valley; 06/11/2017; Kate Braun; LepiMAP 634306
- UCT-ADU LepiMAP; Pine Valley; 03/04/2017; Kate Braun; LepiMAP 620123
- UCT-ADU LepiMAP; Pine Valley; 29/09/2017; Kate Braun; LepiMAP 632368
- UCT-ADU LepiMAP; Pine Valley; 09/10/2017; Kate Braun; LepiMAP 632623
- UCT-ADU LepiMAP; Pine Valley; 19/10/2017; Kate Braun; LepiMAP 633321



Celidomphax rubrimaculata (Warren, 1905)
Malolotja and Mlawula Checklists



Chlorocoma didita (Walker, 1861)
Malolotja and Mlawula Checklists

Heterorachis devocata devocata (Walker, 1861)
Malolotja and Mlawula Checklists
(Heterorachis devocata)

- UCT-ADU LepiMAP; Pine Valley; 13/11/2017; Kate Braun; LepiMAP 634798
- UCT-ADU LepiMAP; Pine Valley; 06/02/2018; Kate Braun; LepiMAP 640363
- UCT-ADU LepiMAP; Pine Valley; 26/12/2017; Kate Braun; LepiMAP 637020
- UCT-ADU LepiMAP; Pine Valley; 30/01/2017; Kate Braun; LepiMAP 614074
- UCT-ADU LepiMAP; Pine Valley; 17/10/2015; Kate Braun; LepiMAP 579905
- UCT-ADU LepiMAP; Pine Valley; 22/12/2016; Kate Braun; LepiMAP 611389



Lophorrhachia rubricorpus rubricorpus
(Warren, 1898)
Malolotja and Mlawula Checklists
(Lophorrhachia rubricorpus)



Lophostola atridisca (Warren, 1897)
UCT-ADU LepiMap

- UCT-ADU LepiMAP; Pine Valley; 25/12/2018; Kate Braun; LepiMAP 666275



Geometridae: Geometrinae:
Heliotheini

Petovia marginata marginata Walker, 1854
UCT-ADU LepiMap
(Petovia marginata)

- UCT-ADU LepiMAP; Pine Valley; 19/10/2015; Kate Braun; LepiMAP 580494
- UCT-ADU LepiMAP; Pine Valley; 24/10/2009; Kate Braun; LepiMAP 9119



Heterorachis despoliata Prout L.B. 1916
UCT-ADU LepiMap

- UCT-ADU LepiMAP; Pine Valley; 06/12/2018; Kate Braun; LepiMAP 664383



Lophorrhachia aenospila (Bethune-Baker, 1913)
UCT-ADU LepiMap

- UCT-ADU LepiMAP; Pine Valley; 04/02/2017; Kate Braun; LepiMAP 614652
- UCT-ADU LepiMAP; Pine Valley; 09/12/2017; Kate Braun; LepiMAP 635799
- UCT-ADU LepiMAP; Pine Valley; 29/01/2017; Kate Braun; LepiMAP 613914
- UCT-ADU LepiMAP; Pine Valley; 29/01/2017; Kate Braun; LepiMAP 613905



Omphax bacoti Prout L. B., 1912
Malolotja and Mlawula Checklists

- UCT-ADU LepiMAP; Pine Valley; 16/08/2017; Kate Braun; LepiMAP 630303



Omphax bilobata Janse, 1935
UCT-ADU LepiMAP

- UCT-ADU LepiMAP; Pine Valley; 15/08/2017; Kate Braun; LepiMAP 630250

Geometridae: Geometrinae:
Hemistolini

Celidomphax quadrimacula Janse, 1935
UCT-ADU LepiMap

- UCT-ADU LepiMAP; Mlawula; 24/03/2017; Kate Braun; LepiMAP 619042



Omphax plantaria plantaria Guenée, 1858
Malolotja and Mlawula Checklists
(*Omphax plantaria*)

- UCT-ADU LepiMAP; Pine Valley; 22/12/2016; Kate Braun; LepiMAP 611391
- UCT-ADU LepiMAP; Pine Valley; 01/10/2018; Kate Braun; LepiMAP 659297
- UCT-ADU LepiMAP; Pine Valley; 16/10/2017; Kate Braun; LepiMAP 633176
- UCT-ADU LepiMAP; Pine Valley; 15/10/2017; Kate Braun; LepiMAP 633124
- UCT-ADU LepiMAP; Pine Valley; 26/02/2015; Kate Braun; LepiMAP 564366
- UCT-ADU LepiMAP; Pine Valley; 10/10/2017; Kate Braun; LepiMAP 632740
- UCT-ADU LepiMAP; Pine Valley; 26/01/2017; Kate Braun; LepiMAP 613533
- UCT-ADU LepiMAP; Pine Valley; 06/02/2016; Kate Braun; LepiMAP 587945
- UCT-ADU LepiMAP; Pine Valley; 07/01/2016; Kate Braun; LepiMAP 586984
- UCT-ADU LepiMAP; Pine Valley; 02/12/2015; Kate Braun; LepiMAP 586759
- UCT-ADU LepiMAP; Pine Valley; 13/12/2015; Kate Braun; LepiMAP 586774
- UCT-ADU LepiMAP; Pine Valley; 04/12/2008; Kate Braun; LepiMAP 10783
- UCT-ADU LepiMAP; Pine Valley; 27/10/2016; Kate Braun; LepiMAP 607836



Geometridae: Geometrinae:
Hemitheini

Chlorissa albostrigulata (Warren, 1897)
UCT-ADU LepiMap

- UCT-ADU LepiMAP; Mlawula; 23/03/2017; Kate Braun; LepiMAP 618994
- UCT-ADU LepiMAP; Mlawula; 03/03/2018; Kate Braun; LepiMAP 642481



Chlorissa attenuata (Walker, 1863)
Malolotja and Mlawula Checklists

- UCT-ADU LepiMAP; Pine Valley; 12/10/2017; Kate Braun; LepiMAP 632810
- UCT-ADU LepiMAP; Pine Valley; 09/04/2018; Kate Braun; LepiMAP 645309
- UCT-ADU LepiMAP; Pine Valley; 06/04/2018; Kate Braun; LepiMAP 644942
- UCT-ADU LepiMAP; Pine Valley; 13/03/2018; Kate Braun; LepiMAP 642746
- UCT-ADU LepiMAP; Pine Valley; 23/01/2018; Kate Braun; LepiMAP 639656
- UCT-ADU LepiMAP; Pine Valley; 03/01/2018; Kate Braun; LepiMAP 637966
- UCT-ADU LepiMAP; Pine Valley; 23/12/2017; Kate Braun; LepiMAP 636797
- UCT-ADU LepiMAP; Pine Valley; 10/10/2018; Kate Braun; LepiMAP 660193
- UCT-ADU LepiMAP; Pine Valley; 17/12/2017; Kate Braun; LepiMAP 636444
- UCT-ADU LepiMAP; Pine Valley; 25/09/2018; Kate Braun; LepiMAP 658561
- UCT-ADU LepiMAP; Pine Valley; 27/05/2017; Kate Braun; LepiMAP 626465
- UCT-ADU LepiMAP; Pine Valley; 20/03/2017; Kate Braun; LepiMAP 618626
- UCT-ADU LepiMAP; Pine Valley; 15/03/2017; Kate Braun; LepiMAP 618035
- UCT-ADU LepiMAP; Pine Valley; 29/01/2017; Kate Braun; LepiMAP 613919
- UCT-ADU LepiMAP; Pine Valley; 22/01/2017; Kate Braun; LepiMAP 613089
- UCT-ADU LepiMAP; Pine Valley; 01/12/2016; Kate Braun; LepiMAP 610464
- UCT-ADU LepiMAP; Pine Valley; 23/02/2015; Kate Braun; LepiMAP 564035
- UCT-ADU LepiMAP; Pine Valley; 17/12/2017; Kate Braun; LepiMAP 636434
- UCT-ADU LepiMAP; Pine Valley; 12/12/2017; Kate Braun; LepiMAP 636038



Chlorissa dorsicristata (Warren, 1905)
UCT-ADU LepiMap

- UCT-ADU LepiMAP; Mlawula; 04/01/2018; Kate Braun; LepiMAP 638832



Chlorissa stibolepida (Butler, 1879)
Malolotja and Mlawula Checklists

Neromia clavicornis Prout L. B., 1915
Malolotja and Mlawula Checklists

Neromia rubripunctilla (Prout L. B., 1912)
UCT-ADU LepiMap

- UCT-ADU LepiMAP; Pine Valley; 11/09/2017; Kate Braun; LepiMAP 632055
- UCT-ADU LepiMAP; Pine Valley; 22/09/2017; Kate Braun; LepiMAP 632153



Geometridae: Geometrinae:
Microloxiini

Allochrostes biornata Prout L. B., 1913
UCT-ADU LepiMap

- UCT-ADU LepiMAP; Mlawula; 18/02/2016; Kate Braun; LepiMAP 588740



Allochrostes impunctata (Warren, 1897)
UCT-ADU LepiMap

- UCT-ADU LepiMAP; Mlawula; 05/01/2018; Kate Braun; LepiMAP 638898



Prasinocyma immaculata immaculata
(Thunberg, 1784)
Malolotja and Mlawula Checklists
(*Prasinocyma scissa*)



Prasinocyma inversicaulis Prout L. B., 1913
Malolotja and Mlawula Checklists

Thalassodes quadraria Guenée, 1858
Malolotja and Mlawula Checklists

- UCT-ADU LepiMAP; Pine Valley; 17/03/2017; Kate Braun; LepiMAP 618169
- UCT-ADU LepiMAP; Pine Valley; 22/04/2017; Kate Braun; LepiMAP 622333
- UCT-ADU LepiMAP; Pine Valley; 08/01/2016; Kate Braun; LepiMAP 586989



Allochrotes saliata (Felder & Rogenhofer, 1875)

UCT-ADU LepiMap

- UCT-ADU LepiMAP; Rosecraft; 08/11/2018; Kate Braun; LepiMAP 661931



Microloxia ruficornis Warren, 1897

UCT-ADU LepiMap

- UCT-ADU LepiMAP; Pine Valley; 18/04/2017; Kate Braun; LepiMAP 621867
- UCT-ADU LepiMAP; Pine Valley; 28/03/2017; Kate Braun; LepiMAP 619307
- UCT-ADU LepiMAP; Mlawula; 23/03/2017; Kate Braun; LepiMAP 618995
- UCT-ADU LepiMAP; Pine Valley; 28/03/2017; Kate Braun; LepiMAP 619301



Mixocera albistrigata (Pagenstecher, 1893)
Malolotja and Mlawula Checklists

Paraprasina discolor Warren, 1897
Malolotja and Mlawula Checklists

Geometridae: Geometrinae:
Pseudoterpnini

Pingasa distensaria distensaria (Walker, 1860)
Malolotja and Mlawula Checklists

- UCT-ADU LepiMAP; Pine Valley; 11/02/2017; Kate Braun; LepiMAP 615278
- UCT-ADU LepiMAP; Pine Valley; 17/03/2017; Kate Braun; LepiMAP 618179
- UCT-ADU LepiMAP; Pine Valley; 21/03/2017; Kate Braun; LepiMAP 618657



Pingasa distensaria respondens (Walker, 1860)

UCT-ADU LepiMap



Pingasa lahaye (Oberthür, 1887)
Afromoths: Krüger (2014)

Geometridae: Geometrinae: Thalerini

Dolosis illacerata Prout L. B., 1912
Malolotja and Mlawula Checklists



Geometridae: Larentiinae

Chionopora tarachodes Prout L. B., 1922
Malolotja and Mlawula Checklists

- UCT-ADU LepiMAP; Mlawula; 20/12/2018; Kate Braun; LepiMAP 666198



Disclisoprocta natalata (Walker, 1862)
Malolotja and Mlawula Checklists



Geometridae: Larentiinae: Asthenini

Asthenotricha inutilis Warren, 1901
Malolotja and Mlawula Checklists

Geometridae: Larentiinae: Eupitheciini

Chloroclystis consocer Prout L. B., 1937
Malolotja and Mlawula Checklists

Chloroclystis grisea Warren, 1897

UCT-ADU LepiMAP

- UCT-ADU LepiMAP; Pine Valley; 12/12/2017; Kate Braun; LepiMAP 636040
- UCT-ADU LepiMAP; Pine Valley; 02/10/2018; Kate Braun; LepiMAP 659408
- UCT-ADU LepiMAP; Pine Valley; 14/01/2018; Kate Braun; LepiMAP 639147
- UCT-ADU LepiMAP; Pine Valley; 13/01/2018; Kate Braun; LepiMAP 638966
- UCT-ADU LepiMAP; Pine Valley; 23/12/2017; Kate Braun; LepiMAP 636801
- UCT-ADU LepiMAP; Pine Valley; 10/12/2017; Kate Braun; LepiMAP 635824
- UCT-ADU LepiMAP; Pine Valley; 09/12/2017; Kate Braun; LepiMAP 635803
- UCT-ADU LepiMAP; Pine Valley; 09/12/2017; Kate Braun; LepiMAP 635798
- UCT-ADU LepiMAP; Pine Valley; 09/11/2017; Kate Braun; LepiMAP 634493
- UCT-ADU LepiMAP; Pine Valley; 15/10/2017; Kate Braun; LepiMAP 633134
- UCT-ADU LepiMAP; Pine Valley; 24/08/2017; Kate Braun; LepiMap 630584
- UCT-ADU LepiMAP; Pine Valley; 29/01/2017; Kate Braun; LepiMAP 613933
- UCT-ADU LepiMAP; Pine Valley; 03/01/2018; Kate Braun; LepiMAP 637950



Chloroclystis gymnoscelides Prout L. B., 1916
Malolotja and Mlawula Checklists

Chloroclystis muscosa tumefacta Prout L. B., 1917

Malolotja and Mlawula Checklists
(*Chloroclystis muscosa*)

- UCT-ADU LepiMAP; Pine Valley; 05/04/2017; Kate Braun; LepiMAP 620273
- UCT-ADU LepiMAP; Pine Valley; 12/01/2018; Kate Braun; LepiMAP 638942
- UCT-ADU LepiMAP; Pine Valley; 24/12/2017; Kate Braun; LepiMAP 636913
- UCT-ADU LepiMAP; Pine Valley; 12/12/2017; Kate Braun; LepiMAP 636033
- UCT-ADU LepiMAP; Pine Valley; 10/12/2017; Kate Braun; LepiMAP 635805
- UCT-ADU LepiMAP; Pine Valley; 16/01/2018; Kate Braun; LepiMAP 639433
- UCT-ADU LepiMAP; Pine Valley; 12/11/2017; Kate Braun; LepiMAP 634691
- UCT-ADU LepiMAP; Pine Valley; 25/04/2017; Kate Braun; LepiMAP 622637
- UCT-ADU LepiMAP; Pine Valley; 28/03/2017; Kate Braun; LepiMAP 619263
- UCT-ADU LepiMAP; Pine Valley; 07/03/2017; Kate Braun; LepiMAP 617490
- UCT-ADU LepiMAP; Pine Valley; 07/02/2017; Kate Braun; LepiMAP 615032
- UCT-ADU LepiMAP; Pine Valley; 06/02/2017; Kate Braun; LepiMAP 614949
- UCT-ADU LepiMAP; Pine Valley; 09/11/2017; Kate Braun; LepiMAP 634484
- UCT-ADU LepiMAP; Pine Valley; 06/11/2017; Kate Braun; LepiMAP 634484

Braun; LepiMAP 634294



*

***Chloroclystis* sp.**

UCT-ADU LepiMap

- UCT-ADU LepiMAP; Pine Valley; 31/01/2017; Kate Braun; LepiMAP 614165
- UCT-ADU LepiMAP; Pine Valley; 28/10/2018; Kate Braun; LepiMAP 661048
- UCT-ADU LepiMAP; Pine Valley; 15/10/2018; Kate Braun; LepiMAP 660450
- UCT-ADU LepiMAP; Pine Valley; 13/01/2018; Kate Braun; LepiMAP 638971
- UCT-ADU LepiMAP; Pine Valley; 17/12/2017; Kate Braun; LepiMAP 636428
- UCT-ADU LepiMAP; Pine Valley; 12/12/2017; Kate Braun; LepiMAP 636034
- UCT-ADU LepiMAP; Pine Valley; 09/11/2017; Kate Braun; LepiMAP 634476
- UCT-ADU LepiMAP; Pine Valley; 09/11/2017; Kate Braun; LepiMAP 634461
- UCT-ADU LepiMAP; Pine Valley; 09/11/2017; Kate Braun; LepiMAP 634460
- UCT-ADU LepiMAP; Pine Valley; 17/02/2017; Kate Braun; LepiMAP 615952
- UCT-ADU LepiMAP; Pine Valley; 04/02/2017; Kate Braun; LepiMAP 614641
- UCT-ADU LepiMAP; Pine Valley; 31/01/2017; Kate Braun; LepiMAP 614152
- UCT-ADU LepiMAP; Pine Valley; 30/01/2017; Kate Braun; LepiMAP 614067
- UCT-ADU LepiMAP; Pine Valley; 29/01/2017; Kate Braun; LepiMAP 613902
- UCT-ADU LepiMAP; Mlawula; 06/10/2018; Kate Braun; LepiMAP 659877
- UCT-ADU LepiMAP; Pine Valley; 15/02/2017; Kate Braun; LepiMAP 615686



Eupithecia festiva Prout L. B., 1916
Malolotja and Mlawula Checklists

Eupithecia gradatilinea Prout L. B., 1916
Malolotja and Mlawula Checklists

Eupithecia infelix Prout L. B., 1917

Malolotja and Mlawula Checklists

- UCT-ADU LepiMAP; Pine Valley; 29/03/2017; Kate Braun; LepiMAP 619370



Eupithecia nigribasis (Warren, 1902)

Malolotja and Mlawula Checklists

Eupithecia perigrapta Janse, 1933

Malolotja and Mlawula Checklists

Eupithecia polylibades Prout L. B., 1916

Afromoths: Krüger (2003)

Eupithecia rubiginifera Prout L. B., 1913

Malolotja and Mlawula Checklists

***Eupithecia* sp.**

UCT-ADU LepiMAP

- ZSM BOLD BC ZSM Lep 32248; Ezulwini; B. Skule; BOLD
- ZSM BOLD BC ZSM Lep 32252; Ezulwini; B. Skule; BOLD
- ZSM BOLD BC ZSM Lep 32256; Ezulwini; B. Skule; BOLD
- UCT-ADU LepiMAP; Malolotja; 20/03/2010; Webb P.; LepiMAP 11929



- UCT-ADU LepiMAP; Pine Valley; 22/04/2017; Kate Braun; LepiMAP 622326
- UCT-ADU LepiMAP; Pine Valley; 09/12/2017; Kate Braun; LepiMAP 635769

Eupithecia subcanipars Prout L. B., 1917

Malolotja and Mlawula Checklists

Pasiphila derasata (Bastelberger, 1905)

Malolotja and Mlawula Checklists

(*Chloroclystis jansei*)

Pasiphila lita (Prout L. B., 1916)

Malolotja and Mlawula Checklists

(*Chloroclystis lita*)

Geometridae: Larentiinae: Larentiini

Entephria epipercna (Prout L. B., 1913)

Malolotja and Mlawula Checklists

(*Perizoma epipercna*)

Larentia bitrita (Felder & Rogenhofer,

1875)

Malolotja and Mlawula Checklists

Geometridae: Larentiinae: Melanthiini

Collix foraminata Guenée, 1858

Malolotja and Mlawula Checklists

Horisme minuata (Walker, 1860)

Malolotja and Mlawula Checklists

- UCT-ADU LepiMAP; Pine Valley; 29/12/2018; Kate Braun; LepiMAP 666630



Horisme obscurata obscurata Prout L. B.,

1913

Malolotja and Mlawula Checklists

(*Horisme obscurata*)

- UCT-ADU LepiMAP; Rosecraft; 08/18/2018; Kate Braun; LepiMAP 661924
- UCT-ADU LepiMAP; Pine Valley; 31/12/2018; Kate Braun; LepiMAP 666969



Horisme punctiscripta (Prout L. B., 1916)

UCT-ADU LepiMAP

- UCT-ADU LepiMAP; Pine Valley; 28/11/2016; Kate Braun; LepiMAP 610418
- UCT-ADU LepiMAP; Pine Valley; 29/01/2017; Kate Braun; LepiMAP 613887
- UCT-ADU LepiMAP; Pine Valley; 30/01/2017; Kate Braun; LepiMAP 614111
- UCT-ADU LepiMAP; Pine Valley; 07/02/2017; Kate Braun; LepiMAP 614963
- UCT-ADU LepiMAP; Pine Valley; 16/12/2017; Kate Braun; LepiMAP 636281



Melanthia ustiplaga (Warren, 1899)

Malolotja and Mlawula Checklists

Piercia bryophilaria (Warren, 1903)

Malolotja and Mlawula Checklists

- UCT-ADU LepiMAP; Pine Valley; 27/10/2018; Kate Braun; LepiMAP 660951
- UCT-ADU LepiMAP; Pine Valley; 23/02/2017; Kate Braun; LepiMAP 616510
- UCT-ADU LepiMAP; Pine Valley; 17/03/2017; Kate Braun; LepiMAP 618135
- UCT-ADU LepiMAP; Pine Valley; 09/12/2017; Kate Braun; LepiMAP 635770
- UCT-ADU LepiMAP; Pine Valley; 16/12/2017; Kate Braun; LepiMAP 636303



Piercia cidariata (Guenée, 1857)

Malolotja and Mlawula Checklists

Piercia dryas (Prout L.B., 1915)
Malolotja and Mlawula Checklists

Piercia nimipunctata Janse, 1933
Malolotja and Mlawula Checklists
• UCT-ADU LepiMAP; Malolotja; 02/02/2017; Kate Braun; LepiMAP 614365
• UCT-ADU LepiMAP; Pine Valley; 03/04/2017; Kate Braun; LepiMAP 620115



Piercia spatiosata (Walker, 1862)
Malolotja and Mlawula Checklists

Piercia vittata Janse, 1933
UCT-ADU LepiMap
• UCT-ADU LepiMAP; Pine Valley; 09/12/2017; Kate Braun; LepiMAP 635771



Piercia sp. 1
UCT-ADU LepiMap
• UCT-ADU LepiMAP; Pine Valley; 09/01/2017; Kate Braun; LepiMAP 612484
• UCT-ADU LepiMAP; Pine Valley; 19/10/2017; Kate Braun; LepiMAP 633329
• UCT-ADU LepiMAP; Pine Valley; 24/08/2017; Kate Braun; LepiMap 630577
• UCT-ADU LepiMAP; Pine Valley; 29/12/2016; Kate Braun; LepiMAP 611427
• UCT-ADU LepiMAP; Pine Valley; 24/12/2016; Kate Braun; LepiMAP 611404
• UCT-ADU LepiMAP; Pine Valley; 11/09/2017; Kate Braun; LepiMap 632044



Piercia sp. 2
UCT-ADU LepiMap
• UCT-ADU LepiMAP; Pine Valley; 09/11/2017; Kate Braun; LepiMAP 634473



Piercia sp. 4
UCT-ADU LepiMap
• UCT-ADU LepiMAP; Pine Valley; 03/04/2017; Kate Braun; LepiMAP 620126



Geometridae: Larentiinae: Perizominae

Perizoma petrogenes (Prout L. B., 1922)
UCT-ADU LepiMap
• UCT-ADU LepiMAP; Pine Valley; 12/01/2018; Kate Braun; LepiMAP 638946



Geometridae: Larentiinae: Scotopterygini

Scotopteryx cryptocycla (Prout L. B., 1913)
Malolotja and Mlawula Checklists



Scotopteryx nictitaria nictitaria
(Herrich-Schöffer, 1855)
Malolotja and Mlawula Checklists

Geometridae: Larentiinae: Xanthorhoini

Gonanticlea meridionata meridionata
(Walker, 1862)
Malolotja and Mlawula Checklists
(*Gonanticlea meridionata*)

Haplolabida coaequata (Prout L. B., 1935)
Malolotja and Mlawula Checklists

Haplolabida inaequata (Walker, 1861)
Malolotja and Mlawula Checklists

Mimoclystia explanata (Walker, 1862)
Malolotja and Mlawula Checklists

Mimoclystia pudicata pudicata (Walker, 1862)
Malolotja and Mlawula Checklists
(*Mimoclystia pudicata*)
• UCT-ADU LepiMAP; Pine Valley; 23/12/2014; Kate Braun; LepiMAP 559290



Piercia olivata Janse, 1933
Malolotja and Mlawula Checklists

Piercia perizomoides (Prout L. B., 1916)
UCT-ADU LepiMAP
• UCT-ADU LepiMAP; Pine Valley; 06/02/2018; Kate Braun; LepiMAP 640361
• UCT-ADU LepiMAP; Pine Valley; 09/02/2018; Kate Braun; LepiMAP 640512
• UCT-ADU LepiMAP; Pine Valley; 01/10/2018; Kate Braun; LepiMAP 659280



Piercia prasinaria (Warren, 1901)
Malolotja and Mlawula Checklists
• UCT-ADU LepiMAP; Pine Valley; 17/12/2017; Kate Braun; LepiMAP 636445
• UCT-ADU LepiMAP; Pine Valley; 23/12/2017; Kate Braun; LepiMAP 636824
• UCT-ADU LepiMAP; Pine Valley; 24/01/2018; Kate Braun; LepiMAP 639732
• UCT-ADU LepiMAP; Pine Valley; 04/04/2018; Kate Braun; LepiMAP 644860



Piercia smaragdinata (Walker, 1862)
Malolotja and Mlawula Checklists



Mimoclystia undulosata Warren, 1901
UCT-ADU LepiMap

- UCT-ADU LepiMAP; Pine Valley; 09/10/2018; Kate Braun; LepiMAP 660123



Orthonama obstipata obstipata (Fabricius, 1794)
Malolotja and Mlawula Checklists
(*Orthonama obstipata*)



Polystroma subspissata Warren, 1897
Malolotja and Mlawula Checklists

Xanthorhoe exorista Prout L. B., 1922
Malolotja and Mlawula Checklists

- UCT-ADU LepiMAP; Pine Valley; 05/03/2018; Kate Braun; LepiMAP 642570



Xanthorhoe mimica Janse, 1933
Malolotja and Mlawula Checklists

Xanthorhoe poseata (Geyer, 1837)
Malolotja and Mlawula Checklists

- UCT-ADU LepiMAP; Pine Valley; 14/01/2018; Kate Braun; LepiMAP 639154



***Xanthorhoe* sp.**
UCT-ADU LepiMap

- UCT-ADU LepiMAP; Pine Valley; 24/02/2018; Kate Braun; LepiMAP 641444
- UCT-ADU LepiMAP; Pine Valley; 13/08/2017; Kate Braun; LepiMAP 630025

- UCT-ADU LepiMAP; Pine Valley; 09/02/2018; Kate Braun; LepiMAP 640581
- UCT-ADU LepiMAP; Pine Valley; 30/09/2018; Kate Braun; LepiMAP 659158
- UCT-ADU LepiMAP; Pine Valley; 10/02/2018; Kate Braun; LepiMAP 640602
- UCT-ADU LepiMAP; Pine Valley; 28/10/2018; Kate Braun; LepiMAP 661059
- UCT-ADU LepiMAP; Pine Valley; 24/02/2018; Kate Braun; LepiMAP 641442
- UCT-ADU LepiMAP; Pine Valley; 15/08/2017; Kate Braun; LepiMAP 630263
- UCT-ADU LepiMAP; Pine Valley; 05/03/2018; Kate Braun; LepiMAP 642545
- UCT-ADU LepiMAP; Pine Valley; 09/03/2018; Kate Braun; LepiMAP 642604
- UCT-ADU LepiMAP; Pine Valley; 04/04/2018; Kate Braun; LepiMAP 644865
- UCT-ADU LepiMAP; Pine Valley; 05/05/2018; Kate Braun; LepiMAP 647706
- UCT-ADU LepiMAP; Pine Valley; 01/10/2018; Kate Braun; LepiMAP 659302
- UCT-ADU LepiMAP; Pine Valley; 10/10/2018; Kate Braun; LepiMAP 660202
- UCT-ADU LepiMAP; Pine Valley; 27/10/2018; Kate Braun; LepiMAP 660948
- UCT-ADU LepiMAP; Pine Valley; 27/05/2017; Kate Braun; LepiMAP 626464
- UCT-ADU LepiMAP; Pine Valley; 04/05/2018; Kate Braun; LepiMAP 647667
- UCT-ADU LepiMAP; Malolotja; 02/02/2017; Kate Braun; LepiMAP 614329
- UCT-ADU LepiMAP; Pine Valley; 02/05/2017; Kate Braun; LepiMAP 626389
- UCT-ADU LepiMAP; Pine Valley; 23/01/2018; Kate Braun; LepiMAP 639649
- UCT-ADU LepiMAP; Malolotja; 02/02/2017; Kate Braun; LepiMAP 614367
- UCT-ADU LepiMAP; Pine Valley; 11/01/2016; Kate Braun; LepiMAP 587002
- UCT-ADU LepiMAP; Pine Valley; 23/01/2017; Kate Braun; LepiMAP 613211
- UCT-ADU LepiMAP; Pine Valley; 23/01/2017; Kate Braun; LepiMAP 613247
- UCT-ADU LepiMAP; Pine Valley; 31/01/2017; Kate Braun; LepiMAP 614166
- UCT-ADU LepiMAP; Pine Valley; 25/02/2017; Kate Braun; LepiMAP 617106
- UCT-ADU LepiMAP; Pine Valley; 06/03/2017; Kate Braun; LepiMAP 617401
- UCT-ADU LepiMAP; Pine Valley; 19/04/2017; Kate Braun; LepiMAP 621949
- UCT-ADU LepiMAP; Pine Valley; 15/03/2017; Kate Braun; LepiMAP 618038
- UCT-ADU LepiMAP; Pine Valley; 15/03/2017; Kate Braun; LepiMAP 618041
- UCT-ADU LepiMAP; Pine Valley; 17/03/2017; Kate Braun; LepiMAP 618166
- UCT-ADU LepiMAP; Pine Valley; 20/03/2017; Kate Braun; LepiMAP 618528
- UCT-ADU LepiMAP; Pine Valley; 28/03/2017; Kate Braun; LepiMAP 619285
- UCT-ADU LepiMAP; Pine Valley; 05/04/2017; Kate Braun; LepiMAP 620278
- UCT-ADU LepiMAP; Pine Valley; 14/04/2017; Kate Braun; LepiMAP 621138
- UCT-ADU LepiMAP; Pine Valley; 13/03/2017; Kate Braun; LepiMAP 617827



Geometridae: Sterrhinae

Antitrygodes callibotrys Prout L. B., 1918
Project Noah (Photos by Tina Petterson)

- Project Noah; Mlawula; 11/11/2013; Tina Petterson; PN 82096065



Discomiosis arciocentra Prout L. B., 1922
Malolotja and Mlawula Checklists

Epicosymbia dentisignata (Walker, 1863)
Malolotja and Mlawula Checklists

Idaea basicostalis (Warren, 1900)
Malolotja and Mlawula Checklists

Idaea fumilinea (Warren, 1903)
UCT-ADU LepiMAP

- UCT-ADU LepiMAP; Pine Valley; 25/12/2018; Kate Braun; LepiMAP 666242



Idaea purpurascens (Prout L.B., 1916)
Malolotja and Mlawula Checklists

- UCT-ADU LepiMAP; Mlawula; 20/12/2018; Kate Braun; LepiMAP 666203



Idaea squamulata (Warren, 1900)

UCT-ADU LepiMAP

- UCT-ADU LepiMAP; Phophonyane; 13/12/2018; Kate Braun; LepiMAP 665159
- UCT-ADU LepiMAP; Mlawula; 20/12/2018; Kate Braun; LepiMAP 666201
- UCT-ADU LepiMAP; Pine Valley; 27/12/2018; Kate Braun; LepiMAP 666377



Idaea sublimbaria (Warren, 1900)

UCT-ADU LepiMAP

- UCT-ADU LepiMAP; Phophonyane; 13/12/2018; Kate Braun; LepiMAP 665131



Idaea umbricosta umbricosta (Prout L.B., 1913)

Malolotja and Mlawula Checklists
(*Idaea umbricosta*)

- UCT-ADU LepiMAP; Pine Valley; 01/10/2018; Kate Braun; LepiMAP 659306



Idaea sp.

UCT-ADU LepiMAP

- UCT-ADU LepiMAP; Pine Valley; 31/01/2017; Kate Braun; LepiMAP 614153
- UCT-ADU LepiMAP; Pine Valley; 27/12/2016; Kate Braun; LepiMAP 611409
- UCT-ADU LepiMAP; Pine Valley; 01/02/2017; Kate Braun; LepiMAP 614276
- UCT-ADU LepiMAP; Pine Valley; 27/12/2017; Kate Braun; LepiMAP 637288
- UCT-ADU LepiMAP; Pine Valley; 26/12/2017; Kate Braun; LepiMAP 637019
- UCT-ADU LepiMAP; Pine Valley; 23/12/2017; Kate Braun; LepiMAP 636828
- UCT-ADU LepiMAP; Pine Valley; 23/12/2017; Kate Braun; LepiMAP 636794
- UCT-ADU LepiMAP; Pine Valley; 16/10/2017; Kate Braun; LepiMAP 633178
- UCT-ADU LepiMAP; Pine Valley; 16/10/2017; Kate Braun; LepiMAP 633172
- UCT-ADU LepiMAP; Pine Valley; 29/09/2017; Kate Braun; LepiMap 632372
- UCT-ADU LepiMAP; Pine Valley; 15/02/2017; Kate Braun; LepiMAP 615653
- UCT-ADU LepiMAP; Pine Valley; 01/02/2017; Kate Braun; LepiMAP 614243
- UCT-ADU LepiMAP; Pine Valley; 01/02/2017; Kate Braun; LepiMAP 614230
- UCT-ADU LepiMAP; Pine Valley; 29/12/2016; Kate Braun; LepiMAP 611413
- UCT-ADU LepiMAP; Pine Valley; 08/01/2016; Kate Braun; LepiMAP 586990
- UCT-ADU LepiMAP; Pine Valley; 08/02/2016; Kate

Braun; LepiMAP 587946

- UCT-ADU LepiMAP; Pine Valley; 29/12/2016; Kate Braun; LepiMAP 611419
- UCT-ADU LepiMAP; Pine Valley; 25/12/2016; Kate Braun; LepiMAP 611407
- UCT-ADU LepiMAP; Pine Valley; 30/01/2017; Kate Braun; LepiMAP 614098
- UCT-ADU LepiMAP; Pine Valley; 30/12/2016; Kate Braun; LepiMAP 611547
- UCT-ADU LepiMAP; Pine Valley; 05/01/2017; Kate Braun; LepiMAP 612085
- UCT-ADU LepiMAP; Pine Valley; 26/01/2017; Kate Braun; LepiMAP 613560
- UCT-ADU LepiMAP; Pine Valley; 28/01/2017; Kate Braun; LepiMAP 613569
- UCT-ADU LepiMAP; Pine Valley; 28/01/2017; Kate Braun; LepiMAP 613570
- UCT-ADU LepiMAP; Pine Valley; 30/01/2017; Kate Braun; LepiMAP 614065
- UCT-ADU LepiMAP; Pine Valley; 30/01/2017; Kate Braun; LepiMAP 614097



Palaeaspilates inoffensa Warren, 1894

UCT-ADU LepiMAP

- UCT-ADU LepiMAP; Pine Valley; 01/10/2018; Kate Braun; LepiMAP 659276



Rhodometra sacraria (Linnaeus, 1767)

Malolotja and Mlawula Checklists

- UCT-ADU LepiMAP; Mlawula; 02/07/2017; Kate Braun; LepiMAP 629918
- UCT-ADU LepiMAP; Pine Valley; 20/04/2017; Kate Braun; LepiMAP 622027
- UCT-ADU LepiMAP; Pine Valley; 14/04/2017; Kate Braun; LepiMAP 621132
- UCT-ADU LepiMAP; Pine Valley; 03/04/2018; Kate Braun; LepiMAP 644838
- UCT-ADU LepiMAP; Mbuluzi Game Reserve; 24/04/2016; Kate Braun; LepiMAP 595158
- UCT-ADU LepiMAP; Mlawula; 21/03/2014; Kate Braun; LepiMAP 42058
- UCT-ADU LepiMAP; Malolotja; 20/04/2011; Kate Braun; LepiMAP 17389
- UCT-ADU LepiMAP; Mlawula; 22/03/2014; Kate Braun; LepiMAP 42120
- UCT-ADU LepiMAP; Mlawula; 23/04/2016; Kate Braun; LepiMAP 595098



Scopula bigeminata (Warren, 1897)

Malolotja and Mlawula Checklists

- UCT-ADU LepiMAP; Pine Valley; 18/03/2017; Kate Braun; LepiMAP 618325
- UCT-ADU LepiMAP; Pine Valley; 20/04/2017; Kate Braun; LepiMAP 622012
- UCT-ADU LepiMAP; Pine Valley; 23/04/2017; Kate Braun; LepiMAP 622352
- UCT-ADU LepiMAP; Pine Valley; 01/01/2019; Kate Braun; LepiMAP 667262



Scopula caesaria caesaria (Walker, 1861)

Malolotja and Mlawula Checklists
(*Scopula caesaria*)

- UCT-ADU LepiMAP; Pine Valley; 15/10/2017; Kate Braun; LepiMAP 633140



Scopula dissonans (Warren, 1897)

Scopula inscriptata (Walker, 1863)

Malolotja and Mlawula Checklists
(*Scopula acentra*)

Scopula internata internata (Guenée, 1858)

Malolotja and Mlawula Checklists
(*Scopula internata*)

Scopula lubricata (Warren, 1905)

Malolotja and Mlawula Checklists

Scopula minorata minorata (Boisduval, 1833)

Malolotja and Mlawula Checklists
(*Scopula minorata*)



*

Scopula natalica (Butler, 1875)

Malolotja and Mlawula Checklists



*

Scopula nemorivagata (Wallengren, 1863)

Malolotja and Mlawula Checklists

Scopula nigrinotata (Warren, 1897)

Malolotja and Mlawula Checklists

- UCT-ADU LepiMAP; Pine Valley; 16/10/2017; Kate Braun; LepiMAP 633199
- UCT-ADU LepiMAP; Pine Valley; 25/09/2018; Kate Braun; LepiMAP 658551
- UCT-ADU LepiMAP; Pine Valley; 16/02/2017; Kate Braun; LepiMAP 615759



Scopula opperta Prout L. B., 1920

Malolotja and Mlawula Checklists

Scopula pertinax (Prout L. B., 1916)

Malolotja and Mlawula Checklists

Scopula pulchellata rufinubes (Warren, 1900)

UCT-ADU LepiMAP

- UCT-ADU LepiMAP; Mlawula; 22/03/2014; Kate Braun; LepiMAP 42124
- UCT-ADU LepiMAP; Mlawula; 22/04/2016; Kate Braun; LepiMAP 595084



Scopula punctilineata (Warren, 1897)

Malolotja and Mlawula Checklists

Scopula quadrifasciata (Bastelberger, 1909)

Malolotja and Mlawula Checklists

Scopula sanguinsecta (Warren, 1897)

UCT-ADU LepiMap

- UCT-ADU LepiMAP; Mlawula; 19/01/2013; Kate Braun; LepiMAP 27829



Scopula serena Prout L. B., 1920

Malolotja and Mlawula Checklists

Scopula sinnaria bisinuata (Warren, 1905)

Malolotja and Mlawula Checklists

(*Scopula sinnaria*)

- UCT-ADU LepiMAP; Pine Valley; 30/12/2016; Kate Braun; LepiMAP 611539
- UCT-ADU LepiMAP; Pine Valley; 29/10/2017; Kate Braun; LepiMAP 633852
- UCT-ADU LepiMAP; Pine Valley; 28/10/2018; Kate Braun; LepiMAP 661056
- UCT-ADU LepiMAP; Pine Valley; 23/03/2015; Kate Braun; LepiMAP 567913



Scopula spoliata (Walker, 1861)

Malolotja and Mlawula Checklists



Scopula straminea (Felder & Rogenhofer, 1875)

UCT-ADU LepiMAP Species List

Scopula sublobata (Warren, 1898)

Malolotja and Mlawula Checklists

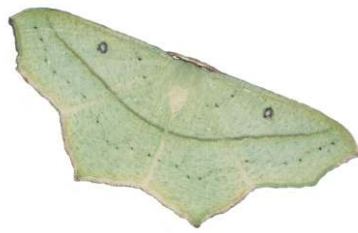


Scopula sp.

UCT-ADU LepiMap

- UCT-ADU LepiMAP; Pine Valley; 15/01/2014; Kate Braun; LepiMAP 39103
- UCT-ADU LepiMAP; Jilobi; 28/01/2014; Kate Braun; LepiMAP 39706
- UCT-ADU LepiMAP; Mucucene Hills; 15/05/2015; Kate Braun; LepiMAP 572261
- UCT-ADU LepiMAP; Pine Valley; 02/11/2015; Kate Braun; LepiMAP 582302
- UCT-ADU LepiMAP; Pine Valley; 11/01/2016; Kate Braun; LepiMAP 587003
- UCT-ADU LepiMAP; Pine Valley; 02/04/2016; Kate Braun; LepiMAP 592324
- UCT-ADU LepiMAP; Pine Valley; 03/04/2016; Kate Braun; LepiMAP 592329
- UCT-ADU LepiMAP; Pine Valley; 04/04/2016; Kate Braun; LepiMAP 592658
- UCT-ADU LepiMAP; Lubombo Mountains, Mabuda Farm; 03/01/2017; de Beer Len ; LepiMAP 611925
- UCT-ADU LepiMAP; Pine Valley; 07/01/2017; Kate Braun; LepiMAP 612090
- UCT-ADU LepiMAP; Mlawula; 18/01/2017; Kate Braun; LepiMAP 612628
- UCT-ADU LepiMAP; Pine Valley; 28/01/2017; Kate Braun; LepiMAP 613565
- UCT-ADU LepiMAP; Pine Valley; 29/01/2017; Kate Braun; LepiMAP 613934
- UCT-ADU LepiMAP; Pine Valley; 30/01/2017; Kate Braun; LepiMAP 614088
- UCT-ADU LepiMAP; Malolotja; 02/02/2017; Kate Braun; LepiMAP 614347
- UCT-ADU LepiMAP; Pine Valley; 04/02/2017; Kate Braun; LepiMAP 614612
- UCT-ADU LepiMAP; Pine Valley; 18/03/2017; Kate Braun; LepiMAP 618325
- UCT-ADU LepiMAP; Mlawula; 23/03/2017; Kate Braun; LepiMAP 618986
- UCT-ADU LepiMAP; Mlawula; 24/03/2017; Kate Braun; LepiMAP 619036
- UCT-ADU LepiMAP; Pine Valley; 28/03/2017; Kate Braun; LepiMAP 619256
- UCT-ADU LepiMAP; Pine Valley; 28/03/2017; Kate Braun; LepiMAP 619253
- UCT-ADU LepiMAP; Pine Valley; 03/04/2017; Kate Braun; LepiMAP 620112
- UCT-ADU LepiMAP; Pine Valley; 19/04/2017; Kate Braun; LepiMAP 621984
- UCT-ADU LepiMAP; Pine Valley; 20/04/2017; Kate Braun; LepiMAP 621997
- UCT-ADU LepiMAP; Pine Valley; 20/04/2017; Kate Braun; LepiMAP 622007
- UCT-ADU LepiMAP; Pine Valley; 20/04/2017; Kate Braun; LepiMAP 622012
- UCT-ADU LepiMAP; Pine Valley; 23/04/2017; Kate Braun; LepiMAP 622352
- UCT-ADU LepiMAP; Pine Valley; 13/08/2017; Kate Braun; LepiMAP 630021
- UCT-ADU LepiMAP; Pine Valley; 15/08/2017; Kate Braun; LepiMAP 630253
- UCT-ADU LepiMAP; Pine Valley; 15/08/2017; Kate Braun; LepiMAP 630257
- UCT-ADU LepiMAP; Pine Valley; 15/08/2017; Kate Braun; LepiMAP 630274
- UCT-ADU LepiMAP; Pine Valley; 16/08/2017; Kate Braun; LepiMAP 630290
- UCT-ADU LepiMAP; Pine Valley; 11/09/2017; Kate Braun; LepiMap 632052
- UCT-ADU LepiMAP; Pine Valley; 22/09/2017; Kate Braun; LepiMap 632139
- UCT-ADU LepiMAP; Pine Valley; 09/10/2017; Kate Braun; LepiMap 632627
- UCT-ADU LepiMAP; Pine Valley; 12/10/2017; Kate Braun; LepiMAP 632787
- UCT-ADU LepiMAP; Pine Valley; 15/10/2017; Kate Braun; LepiMAP 633131
- UCT-ADU LepiMAP; Pine Valley; 16/10/2017; Kate Braun; LepiMAP 633194
- UCT-ADU LepiMAP; Pine Valley; 09/11/2017; Kate Braun; LepiMAP 634501
- UCT-ADU LepiMAP; Pine Valley; 13/11/2017; Kate Braun; LepiMAP 634793
- UCT-ADU LepiMAP; Pine Valley; 10/12/2017; Kate Braun; LepiMAP 635830
- UCT-ADU LepiMAP; Pine Valley; 16/12/2017; Kate Braun; LepiMAP 636316
- UCT-ADU LepiMAP; Pine Valley; 16/12/2017; Kate Braun; LepiMAP 636308
- UCT-ADU LepiMAP; Pine Valley; 16/12/2017; Kate Braun; LepiMAP 636279
- UCT-ADU LepiMAP; Pine Valley; 24/12/2017; Kate Braun; LepiMAP 636928
- UCT-ADU LepiMAP; Pine Valley; 27/12/2017; Kate Braun; LepiMAP 637284
- UCT-ADU LepiMAP; Pine Valley; 14/01/2018; Kate Braun; LepiMAP 639168
- UCT-ADU LepiMAP; Mlawula; 03/03/2018; Kate Braun; LepiMAP 642474
- UCT-ADU LepiMAP; Pine Valley; 18/03/2018; Kate Braun; LepiMAP 643172
- UCT-ADU LepiMAP; Pine Valley; 05/05/2018; Kate Braun; LepiMAP 647672
- UCT-ADU LepiMAP; Pine Valley; 02/10/2018; Kate Braun; LepiMAP 659337
- UCT-ADU LepiMAP; Mlawula; 06/10/2018; Kate Braun; LepiMAP 659878
- UCT-ADU LepiMAP; Pine Valley; 09/10/2018; Kate Braun; LepiMAP 660127
- UCT-ADU LepiMAP; Pine Valley; 10/10/2018; Kate Braun; LepiMAP 660204
- UCT-ADU LepiMAP; Pine Valley; 15/10/2018; Kate Braun; LepiMAP 660461





Traminda vividaria (Walker, 1861)
Malolotja and Mlawula Checklists

- UCT-ADU LepiMAP; Mlawula; 25/03/2017; Kate Braun; LepiMAP 619120
- UCT-ADU LepiMAP; Mlawula; 25/03/2017; Kate Braun; LepiMAP 619122
- UCT-ADU LepiMAP; Pine Valley; 29/03/2017; Kate Braun; LepiMAP 619381



Uraniidae: Epipleminae

Dirades theclata (Guenée, 1857)
Malolotja and Mlawula Checklists
(*Phazaca theclata*)

- iNaturalist; Malolotja; 20/04/2011; Kate Braun; iNaturalist 10956376
- UCT-ADU LepiMAP; Pine Valley; 06/03/2017; Kate Braun; LepiMAP 617378



Epiplema anomala Janse, 1932
Malolotja and Mlawula Checklists



Epiplema inconspicua Janse, 1932
UCT-ADU LepiMAP

- UCT-ADU LepiMAP; Pine Valley; 24/02/2018; Kate Braun; LepiMAP 641443



Epiplema pulveralis Janse, 1932

Malolotja and Mlawula Checklists

Epiplema sp.

Malolotja and Mlawula Checklists

Epiplema tristis Janse, 1932

Malolotja and Mlawula Checklists

Hypoplema fumella Janse, 1932

Malolotja and Mlawula Checklists

Leucopplema dohertyi (Warren, 1904)

Malolotja and Mlawula Checklists

- UCT-ADU LepiMAP; Pine Valley; 16/06/2018; Kate Braun; LepiMAP 642830



Leucopplema triumbrata triumbrata

(Warren, 1902)

UCT-ADU LepiMap Swaziland Species List
Nov 2016



Pseudodirades lactea (Warren, 1897)
Malolotja and Mlawula Checklists

Uraniidae: Microniinae

Urapteroides falcifera (Weymer, 1892)
Malolotja and Mlawula Checklists

Urapteroides recurvata Warren, 1898
UCT-ADU LepiMap

- UCT-ADU LepiMAP; Timbutini Hill; 07/11/2010; Willis C.K.; LepiMAP 15146



Somatina vestalis (Butler, 1875)
UCT-ADU LepiMAP

- UCT-ADU LepiMAP; Mlawula; 30/12/2014; Kate Braun; LepiMAP 559348
- UCT-ADU LepiMAP; Mlawula; 25/03/2017; Kate Braun; LepiMAP 619121
- UCT-ADU LepiMAP; Mlawula; 29/12/2014; Kate Braun; LepiMAP 559334
- UCT-ADU LepiMAP; Mlawula; 21/03/2014; Kate Braun; LepiMAP 42054



Sphecodes sp.

GBIF datasets

- Naturalis Hymenoptera ZMA.INS.847392; Nkomati River; 11/03/1979; Hymenoptera

Traminda falcata Warren, 1897

UCT-ADU LepiMAP

- UCT-ADU LepiMAP; Mlawula; 23/03/2014; Kate Braun; LepiMAP 42133
- UCT-ADU LepiMAP; Mlawula; 23/04/2014; Kate Braun; LepiMAP 44956
- UCT-ADU LepiMAP; Mlawula; 14/12/2014; Kate Braun; LepiMAP 559319
- UCT-ADU LepiMAP; Mlawula; 28/02/2015; Kate Braun; LepiMAP 564411



Traminda neptunaria (Guenée, 1857)
Malolotja and Mlawula Checklists