

Preliminary Swaziland Moths Checklist - PROVISIONAL - January 2019

Part 3: Noctuoidea

Noctuoidea

Erebidae: Aganainae

Asota speciosa (Drury, 1773)

Malolotja and Mlawula Checklists;
AfroMoths: TMSA
(*Psephenia speciosa*)

- UCT-ADU LepiMAP; Pine Valley; 17/03/2017; Kate Braun; LepiMAP 618128
- UCT-ADU LepiMAP; Pine Valley; 19/10/2017; Kate Braun; LepiMAP 633325
- UCT-ADU LepiMAP; Pine Valley; 29/03/2017; Kate Braun; LepiMAP 619387



Digama meridionalis meridionalis Swinhoe, 1907

UCT-ADU LepiMap Swaziland Species List
Nov 2016



*

Digama ostentata Distant, 1899

UCT-ADU LepiMap

- UCT-ADU LepiMAP; Pine Valley; 09/01/2019; Kate Braun; LepiMAP 668447



Erebidae: Anobinae

Anoba atriplaga (Walker, 1858)

UCT-ADU LepiMap; AfroMoths: TMSA

- UCT-ADU LepiMAP; Pine Valley; 06/03/2016; Kate Braun; LepiMAP 591083
- UCT-ADU LepiMAP; Pine Valley; 04/02/2017; Kate Braun; LepiMAP 614656
- UCT-ADU LepiMAP; Pine Valley; 18/04/2017; Kate Braun; LepiMAP 621848



Anoba atripuncta (Hampson, 1902)

AfroMoths: TMSA

- AfroMoths; Mlawula; 18/02/1994; N J Duke;
- UCT-ADU LepiMAP; Phophonyane; 13/12/2018; Kate Braun; LepiMAP 655201



Anoba disjuncta (Walker, 1865)

UCT-ADU LepiMap

- UCT-ADU LepiMAP; Pine Valley; 01/02/2017; Kate Braun; LepiMAP 614260
- UCT-ADU LepiMAP; Pine Valley; 19/04/2017; Kate Braun; LepiMAP 621941
- UCT-ADU LepiMAP; Pine Valley; 28/04/2017; Kate Braun; LepiMAP 623543



Anoba hamifera (Hampson, 1902)

UCT-ADU LepiMAP; AfroMoths: TMSA

- UCT-ADU LepiMAP; Pine Valley; 14/03/2016; Kate Braun; LepiMAP 591086



Anoba microloba Hampson, 1926

Malolotja and Mlawula Checklists;
AfroMoths: TMSA

- AfroMoths; Malolotja; 30/11/1992; N J Duke;
- UCT-ADU LepiMAP; Pine Valley; 09/02/2018; Kate Braun; LepiMAP 640538



Anoba plumipes (Wallengren, 1860)

AfroMoths: TMSA

Anoba sinuata (Fabricius, 1775)

UCT-ADU LepiMap

- UCT-ADU LepiMAP; Phophonyane; 13/12/2018; Kate Braun; LepiMAP 665178



Anoba sp.

UCT-ADU LepiMap

- UCT-ADU LepiMAP; Pine Valley; 16/03/2017; Kate Braun; LepiMAP 618093
- UCT-ADU LepiMAP; Pine Valley; 18/04/2017; Kate Braun; LepiMAP 621846

- UCT-ADU LepiMAP; Pine Valley; 19/04/2017; Kate Braun; LepiMAP 621966
- UCT-ADU LepiMAP; Pine Valley; 20/04/2017; Kate Braun; LepiMAP 622023
- UCT-ADU LepiMAP; Pine Valley; 12/01/2018; Kate Braun; LepiMAP 638950
- UCT-ADU LepiMAP; Mlawula; 03/04/2010; Kate Braun; LepiMAP 12328



Baniana arvorum (Guenée, 1852)

UCT-ADU LepiMAP

- UCT-ADU LepiMAP; Pine Valley; 28/09/2017; Kate Braun; LepiMap 632358
- UCT-ADU LepiMAP; Pine Valley; 15/10/2017; Kate Braun; LepiMAP 633100
- UCT-ADU LepiMAP; Pine Valley; 16/10/2017; Kate Braun; LepiMAP 633179
- UCT-ADU LepiMAP; Pine Valley; 16/10/2017; Kate Braun; LepiMAP 633174
- UCT-ADU LepiMAP; Pine Valley; 06/11/2017; Kate Braun; LepiMAP 634305
- UCT-ADU LepiMAP; Pine Valley; 12/11/2017; Kate Braun; LepiMAP 634669
- UCT-ADU LepiMAP; Pine Valley; 20/11/2017; Kate Braun; LepiMAP 635382
- UCT-ADU LepiMAP; Pine Valley; 09/12/2017; Kate Braun; LepiMAP 635802
- UCT-ADU LepiMAP; Pine Valley; 16/12/2017; Kate Braun; LepiMAP 636273
- UCT-ADU LepiMAP; Pine Valley; 29/09/2018; Kate Braun; LepiMAP 658919
- UCT-ADU LepiMAP; Pine Valley; 02/10/2018; Kate Braun; LepiMAP 659342
- UCT-ADU LepiMAP; Pine Valley; 09/10/2018; Kate Braun; LepiMAP 660119
- UCT-ADU LepiMAP; Pine Valley; 15/10/2018; Kate Braun; LepiMAP 660451
- UCT-ADU LepiMAP; Pine Valley; 27/10/2018; Kate Braun; LepiMAP 660931



Marcipa mediana Hampson, 1926

Afromoths: TMSA

- AfroMoths; Lubombo Mountains, Jilobi; 09/03/1996; N J Duke; TMSA

Plecoptera annexa (Distant, 1898)

Malolotja and Mlawula Checklists;



Afromoths: TMSA

- UCT-ADU LepiMAP; Pine Valley; 20/04/2017; Kate Braun; LepiMAP 621999

Plecoptera arctinotata (Walker, 1865)

Afromoths: TMSA

Plecoptera laniata Hampson, 1910

Afromoths: TMSA

Plecoptera melalepis Hampson, 1910

Afromoths: TMSA

- AfroMoths; Mlawula; 17/04/1994; N J Duke;
- AfroMoths; Mlawula; 17/04/1994; N J Duke; TMSA
- AfroMoths; Malagwane Hill; 12/02/1996; N J Duke;
- UCT-ADU LepiMAP; Pine Valley; 23/01/2017; Kate Braun; LepiMAP 613208
- UCT-ADU LepiMAP; Pine Valley; 06/02/2017; Kate Braun; LepiMAP 614930
- UCT-ADU LepiMAP; Pine Valley; 21/03/2017; Kate Braun; LepiMAP 618662
- UCT-ADU LepiMAP; Pine Valley; 19/04/2017; Kate Braun; LepiMAP 621953
- UCT-ADU LepiMAP; Pine Valley; 22/04/2017; Kate Braun; LepiMAP 622328



Plecoptera melanoscia Hampson, 1926

UCT-ADU LepiMap

- UCT-ADU LepiMAP; Pine Valley; 09/04/2018; Kate Braun; LepiMAP 645317



Plecoptera misera (Butler, 1883)

Afromoths: TMSA

- UCT-ADU LepiMAP; Pine Valley; 20/03/2017; Kate Braun; LepiMAP 618539



Plecoptera punctilineata Hampson, 1910

UCT-ADU LepiMAP

- UCT-ADU LepiMAP; Pine Valley; 08/03/2017; Kate Braun; LepiMAP 617518

- UCT-ADU LepiMAP; Pine Valley; 09/03/2018; Kate Braun; LepiMAP 642591
- UCT-ADU LepiMAP; Pine Valley; 26/04/2017; Kate Braun; LepiMAP 622877
- UCT-ADU LepiMAP; Pine Valley; 17/02/2017; Kate Braun; LepiMAP 615957
- UCT-ADU LepiMAP; Pine Valley; 06/02/2017; Kate Braun; LepiMAP 614934
- UCT-ADU LepiMAP; Pine Valley; 04/02/2017; Kate Braun; LepiMAP 614673
- UCT-ADU LepiMAP; Pine Valley; 13/02/2011; Kate Braun; LepiMAP 17939
- UCT-ADU LepiMAP; Pine Valley; 12/04/2017; Kate Braun; LepiMAP 620825



Plecoptera trichophora Hampson, 1910

UCT-ADU LepiMap

Plecoptera tripalis (Wallengren, 1863)

UCT-ADU LepiMap

- UCT-ADU LepiMAP; Pine Valley; 12/02/2018; Kate Braun; LepiMAP 640805
- UCT-ADU LepiMAP; Pine Valley; 18/04/2017; Kate Braun; LepiMAP 621852



Plecoptera sp.

UCT-ADU LepiMap

- UCT-ADU LepiMAP; Pine Valley; 03/04/2016; Kate Braun; LepiMAP 592331
- UCT-ADU LepiMAP; Pine Valley; 29/11/2016; Kate Braun; LepiMAP 610440
- UCT-ADU LepiMAP; Pine Valley; 29/12/2016; Kate Braun; LepiMAP 611412
- UCT-ADU LepiMAP; Pine Valley; 24/01/2017; Kate Braun; LepiMAP 613216
- UCT-ADU LepiMAP; Pine Valley; 28/01/2017; Kate Braun; LepiMAP 613567
- UCT-ADU LepiMAP; Pine Valley; 20/04/2017; Kate Braun; LepiMAP 622013



Pleuronodes arida (Hampson, 1902)
Afromoths: TMSA

Erebidae: Arctiinae: Arctiini

Acantharctia latifasciata Hampson, 1909
Malolotja and Mlawula Checklists

Afrosipharctia dissimilis (Distant, 1897)
Malolotja and Mlawula Checklists
(*Estigmene dissimilis*)

Alytarchia amanda (Boisduval, 1847)
Malolotja and Mlawula Checklists

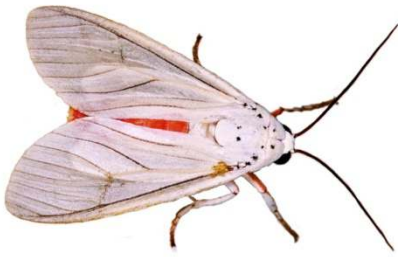
Amerila affinis (Rothschild, 1910)
Malolotja and Mlawula Checklists

Amerila bauri Möschler, 1884
Project Noah (Photos by Tina Petterson)

- Project Noah; Mlawula; 23/02/2014; Tina Petterson; PN 178206024
- UCT-ADU LepiMAP; Mlawula; 30/12/2013; Kate Braun; LepiMAP 38586
- UCT-ADU LepiMAP; Mlawula; 18/01/2017; Kate Braun; LepiMAP 612658
- UCT-ADU LepiMAP; Mlawula; 18/01/2017; Kate Braun; LepiMAP 612669
- UCT-ADU LepiMAP; Pine Valley; 21/03/2017; Kate Braun; LepiMAP 618658
- UCT-ADU LepiMAP; Pine Valley; 02/05/2017; Kate Braun; LepiMAP 626390



Amerila lupia (Druce, 1887)
Malolotja and Mlawula Checklists



Amerila makadara Häuser & Boppré, 1997
Afromoths: Häuser & Boppré (1997)

Amerila mulleri Häuser & Boppré, 1997
Afromoths: Häuser & Boppré (1997)

Amerila vitrea vitrea Plötz, 1880
Afromoths: Häuser & Boppré (1997)

Amphicallia bellatrix (Dalman, 1823)
Malolotja and Mlawula Checklists



Chiromachla leuconoe leuconoe Hopffer, 1857
UCT-ADU LepiMap
(*Nyctemera leuconoe*)

• UCT-ADU LepiMAP; Mlawula; 15/06/2013; Kate Braun; LepiMAP 33117



Cretonotos punctivitta (Walker, 1855)
UCT-ADU LepiMap

• UCT-ADU LepiMAP; Pine Valley; 17/02/2017; Kate Braun; LepiMAP 615937



Diota rostrata (Wallengren, 1860)
Malolotja and Mlawula Checklists
(*Secusio pustularia*)

• UCT-ADU LepiMAP; Pine Valley; 03/04/2016; Kate Braun; LepiMAP 592328



Estigmene multivittata Rothschild, 1910
Malolotja and Mlawula Checklists

• UCT-ADU LepiMAP; Pine Valley; 09/10/2018; Kate Braun; LepiMAP 660112

• UCT-ADU LepiMAP; Pine Valley; 28/10/2018; Kate Braun; LepiMAP 661054

• UCT-ADU LepiMAP; Pine Valley; 09/12/2017; Kate Braun; LepiMAP 635787

• UCT-ADU LepiMAP; Pine Valley; 12/11/2017; Kate Braun; LepiMAP 634708

• UCT-ADU LepiMAP; Pine Valley; 09/11/2017; Kate Braun; LepiMAP 634459

• UCT-ADU LepiMAP; Pine Valley; 16/10/2017; Kate Braun; LepiMAP 633189



Eyrallpenus testaceus (Walker, 1855)
Malolotja and Mlawula Checklists

• UCT-ADU LepiMAP; Pine Valley; 18/03/2017; Kate Braun; LepiMAP 618312

• UCT-ADU LepiMAP; Pine Valley; 16/02/2017; Kate Braun; LepiMAP 615745



Galtara pulverata (Hampson, 1900)
Malolotja and Mlawula Checklists
(*Secusio pulverata*)

Hypobleta viettei Berio, 1954
Malolotja and Mlawula Checklists
(*Metasada viettei*)

Ilemodes astriga Hampson, 1916
UCT-ADU LepiMap

• UCT-ADU LepiMAP; Pine Valley; 12/11/2017; Kate Braun; LepiMAP 634712

• UCT-ADU LepiMAP; Pine Valley; 19/10/2017; Kate Braun; LepiMAP 633335

• UCT-ADU LepiMAP; Pine Valley; 11/10/2018; Kate Braun; LepiMAP 660301

• UCT-ADU LepiMAP; Pine Valley; 09/02/2018; Kate Braun; LepiMAP 640514

• UCT-ADU LepiMAP; Pine Valley; 19/01/2018; Kate Braun; LepiMAP 639456

• UCT-ADU LepiMAP; Pine Valley; 26/10/2018; Kate Braun; LepiMAP 660854

• UCT-ADU LepiMAP; Pine Valley; 09/11/2017; Kate Braun; LepiMAP 634489

• UCT-ADU LepiMAP; Pine Valley; 10/10/2017; Kate Braun; LepiMAP 632726

• UCT-ADU LepiMAP; Pine Valley; 15/02/2017; Kate Braun; LepiMAP 615667

• UCT-ADU LepiMAP; Pine Valley; 01/02/2017; Kate Braun; LepiMAP 614258

• UCT-ADU LepiMAP; Pine Valley; 31/01/2017; Kate Braun; LepiMAP 614184

• UCT-ADU LepiMAP; Pine Valley; 02/12/2016; Kate Braun; LepiMAP 610467

• UCT-ADU LepiMAP; Pine Valley; 01/11/2015; Kate Braun; LepiMAP 582301

- UCT-ADU LepiMAP; Pine Valley; 01/02/2018; Kate Braun; LepiMAP 640100
- UCT-ADU LepiMAP; Pine Valley; 12/10/2017; Kate Braun; LepiMAP 632799



Ilemodes heterogyna Hampson, 1900
UCT-ADU LepiMap

- UCT-ADU LepiMAP; Rosecraft Farm; 08/11/2018; Kate Braun; LepiMAP 661928
- UCT-ADU LepiMAP; Rosecraft Farm; 08/11/2018; Kate Braun; LepiMAP 661963



Logunovium scortillum scortillum
(Wallengren, 1875)
UCT-ADU LepiMap
(*Spilosoma scortillum*)

- UCT-ADU LepiMAP; Pine Valley; 17/12/2017; Kate Braun; LepiMAP 636447

Paralacydes arborifera (Butler, 1875)
Malolotja and Mlawula Checklists



Popoudina leighi (Rothschild, 1910)
AfroMoths: TMSA
(*Spilosoma leighi*)

- AfroMoths; Malolotja; 02/02/1995; N J Duke; BNHM
- AfroMoths; Malolotja; 02/02/1995; N J Duke;
- UCT-ADU LepiMAP; Pine Valley; 11/01/2018; Kate Braun; LepiMAP 638949



Popoudina linea (Walker, 1855)
UCT-ADU LepiMap
(*Spilosoma lineatum*)

- UCT-ADU LepiMAP; Pine Valley; 29/10/2017; Kate Braun; LepiMAP 633853
- UCT-ADU LepiMAP; Pine Valley; 13/01/2018; Kate Braun; LepiMAP 638991

- UCT-ADU LepiMAP; Pine Valley; 11/01/2015; Kate Braun; LepiMAP 560022
- UCT-ADU LepiMAP; Pine Valley; 25/12/2017; Kate Braun; LepiMAP 637013
- UCT-ADU LepiMAP; Pine Valley; 23/01/2018; Kate Braun; LepiMAP 639660
- UCT-ADU LepiMAP; Pine Valley; 09/11/2017; Kate Braun; LepiMAP 634500
- UCT-ADU LepiMAP; Pine Valley; 29/01/2017; Kate Braun; LepiMAP 613903
- UCT-ADU LepiMAP; Pine Valley; 11/01/2017; Kate Braun; LepiMAP 612493
- UCT-ADU LepiMAP; Pine Valley; 23/12/2016; Kate Braun; LepiMAP 611395
- UCT-ADU LepiMAP; Pine Valley; 20/12/2016; Kate Braun; LepiMAP 611381
- UCT-ADU LepiMAP; Mlawula; 03/03/2018; Kate Braun; LepiMAP 642472
- UCT-ADU LepiMAP; Pine Valley; 23/12/2016; Kate Braun; LepiMAP 611392



Pseudolepista atrizona Hampson, 1910
UCT-ADU LepiMap

- UCT-ADU LepiMAP; Pine Valley; 01/02/2017; Kate Braun; LepiMAP 614279



Pseudoradiartia lentifasciata (Hampson, 1916)
UCT-ADU LepiMap

- UCT-ADU LepiMAP; Pine Valley; 24/12/2017; Kate Braun; LepiMAP 636903



Pseudoradiartia scita (Walker, 1865)
UCT-ADU LepiMap

- UCT-ADU LepiMAP; Pine Valley; 16/01/2015; Kate Braun; LepiMAP 560709



Radiartia screabilis screabilis (Wallengren, 1875)
Malolotja and Mlawula Checklists
(*Spilosoma lutescens*)

- UCT-ADU LepiMAP; Pine Valley; 14/01/2018; Kate Braun; LepiMAP 639167
- UCT-ADU LepiMAP; Pine Valley; 19/01/2018; Kate Braun; LepiMAP 639475
- UCT-ADU LepiMAP; Pine Valley; 30/01/2017; Kate Braun; LepiMAP 614106

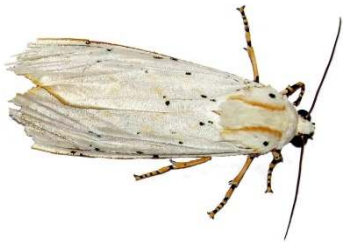


Rhodogastria amasis (Cramer, 1779)
Malolotja and Mlawula Checklists



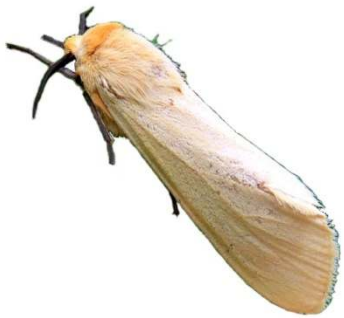
Rhodogastria similis (Möschler, 1884)
UCT-ADU LepiMap

- UCT-ADU LepiMAP; Pine Valley; 13/10/2015; Kate Braun; LepiMAP 579900
- UCT-ADU LepiMAP; Pine Valley; 04/01/2017; Kate Braun; LepiMAP 612074
- UCT-ADU LepiMAP; Pine Valley; 30/01/2017; Kate Braun; LepiMAP 614068
- UCT-ADU LepiMAP; Pine Valley; 04/02/2017; Kate Braun; LepiMAP 614640
- UCT-ADU LepiMAP; Pine Valley; 15/02/2017; Kate Braun; LepiMAP 615676
- UCT-ADU LepiMAP; Pine Valley; 12/11/2017; Kate Braun; LepiMAP 634667
- UCT-ADU LepiMAP; Pine Valley; 10/02/2018; Kate Braun; LepiMAP 640600
- UCT-ADU LepiMAP; Pine Valley; 28/10/2018; Kate Braun; LepiMAP 661046



Saenura flava Wallengren, 1860
Malolotja and Mlawula Checklists

- UCT-ADU LepiMAP; Mlawula; 18/01/2017; Kate Braun; LepiMAP 612798
- UCT-ADU LepiMAP; Pine Valley; 10/10/2018; Kate Braun; LepiMAP 660175
- UCT-ADU LepiMAP; Pine Valley; 18/03/2017; Kate Braun; LepiMAP 618303
- UCT-ADU LepiMAP; Mlawula; 19/01/2017; Kate Braun; LepiMAP 612813
- UCT-ADU LepiMAP; Mlawula; 01/03/2014; Kate Braun; LepiMAP 41046
- UCT-ADU LepiMAP; Pine Valley; 17/02/2017; Kate Braun; LepiMAP 615912



Secusio strigata strigata Walker, 1854
UCT-ADU LepiMap Swaziland Species List
Nov 2016



Syngatha purpurecens
Malolotja and Mlawula Checklists
(*Syngatha purpurecens*)

Teracotona metaxantha metaxantha
(Hampson, 1909)
UCT-ADU LepiMap Swaziland Species List
Nov 2016

- UCT-ADU LepiMAP; Pine Valley; 18/11/2016; Kate Braun; LepiMAP 609639



Teracotona submacula (Walker, 1855)
UCT-ADU LepiMap

- UCT-ADU LepiMAP; Mlawula; 30/11/2015; Kate Braun; LepiMAP 583551
- UCT-ADU LepiMAP; Pine Valley; 10/10/2015; Kate Braun; LepiMAP 579894



Utetheisa pulchella (Linnaeus, 1758)
Malolotja and Mlawula Checklists

- YPM ENT YPM ENT 752068; 19/05/1949; Maria Corinta; YPM ENT YPM ENT
- NMR Insecta NMR996800109485; Nsoko; 21/02/1990; Insecta
- YPM ENT YPM ENT 752068; 19/05/1949; Maria Corinta; ENT
- UCT-ADU LepiMAP; Malolotja; 20/03/2010; Webb P.; LepiMAP 11924
- NMR Insecta NMR996800109485; Nsoko; 21/02/1990; NMR Insecta
- UCT-ADU LepiMAP; Pine Valley; 28/04/2014; Kate Braun; LepiMAP 45933



Erebidae: Arctiinae: Eilemini

Aglossosia flavimarginata Hampson, 1900
Malolotja and Mlawula Checklists

Aglossosia flavithorax (Rothschild, 1912)
Malolotja and Mlawula Checklists
(*Onychipodia flavithorax*)

Brunia vicaria (Walker, 1854)
Malolotja and Mlawula Checklists
(*Lithosia natara*, *Ovenna vicaria*)

- UCT-ADU LepiMAP; Pine Valley; 29/01/2017; Kate Braun; LepiMAP 613930
- UCT-ADU LepiMAP; Pine Valley; 18/04/2017; Kate Braun; LepiMAP 621847
- UCT-ADU LepiMAP; Pine Valley; 19/04/2017; Kate Braun; LepiMAP 621925



Cragia distigmata (Hampson, 1901)

UCT-ADU LepiMap
(*Eilema distigmata*)

- UCT-ADU LepiMAP; Pine Valley; 24/01/2018; Kate Braun; LepiMAP 639733
- UCT-ADU LepiMAP; Pine Valley; 01/12/2016; Kate Braun; LepiMAP 610456
- UCT-ADU LepiMAP; Pine Valley; 17/02/2017; Kate Braun; LepiMAP 615874



Eilema bipuncta

Malolotja and Mlawula Checklists
(=*Exilisia*???)

Eilema elegans elegans (Butler, 1877)

UCT-ADU LepiMap Swaziland Species List
Nov 2016
(*Lepista*?)

- UCT-ADU LepiMAP; Phophonyane; 04/02/2006; Roland H; LepiMAP 556581



Eilema leia (Hampson, 1901)

Malolotja and Mlawula Checklists
(*Leptilema leia*)

Eilema sanguicosta (Hampson, 1901)

UCT-ADU LepiMap
(*Birketsmithiola sanguicosta*)

- UCT-ADU LepiMAP; Pine Valley; 12/12/2017; Kate Braun; LepiMAP 636035
- UCT-ADU LepiMAP; Pine Valley; 15/02/2017; Kate Braun; LepiMAP 615661
- UCT-ADU LepiMAP; Pine Valley; 01/10/2018; Kate Braun; LepiMAP 659301
- UCT-ADU LepiMAP; Pine Valley; 30/09/2018; Kate Braun; LepiMAP 659128
- UCT-ADU LepiMAP; Pine Valley; 05/05/2018; Kate Braun; LepiMAP 647668
- UCT-ADU LepiMAP; Pine Valley; 02/04/2018; Kate Braun; LepiMAP 644820
- UCT-ADU LepiMAP; Pine Valley; 13/03/2018; Kate Braun; LepiMAP 642722
- UCT-ADU LepiMAP; Pine Valley; 09/03/2018; Kate Braun; LepiMAP 642585
- Project Noah; Mlawula; 19/03/2014; Pamela Sai; PN 1209866006
- UCT-ADU LepiMAP; Pine Valley; 29/03/2017; Kate Braun; LepiMAP 619355
- UCT-ADU LepiMAP; Pine Valley; 04/02/2017; Kate Braun; LepiMAP 614607
- UCT-ADU LepiMAP; Pine Valley; 31/01/2017; Kate Braun; LepiMAP 614172
- UCT-ADU LepiMAP; Pine Valley; 31/01/2017; Kate Braun; LepiMAP 614171
- UCT-ADU LepiMAP; Mlawula; 18/01/2017; Kate

Braun; LepiMAP 612802

- UCT-ADU LepiMAP; Mlawula; 18/01/2017; Kate Braun; LepiMAP 612785
- UCT-ADU LepiMAP; Mlawula; 01/03/2014; Kate Braun; LepiMAP 41047
- UCT-ADU LepiMAP; Pine Valley; 17/02/2017; Kate Braun; LepiMAP 615955



Eucreagra arculifera Felder, 1874
Malolotja and Mlawula Checklists

Lepista pandula (Boisduval, 1847)
Malolotja and Mlawula Checklists

- UCT-ADU LepiMAP; Mlawula; 09/11/2013; de Beer Len ; Gemma de Beer; LepiMAP 39118
- UCT-ADU LepiMAP; Pine Valley; 22/09/2017; Kate Braun; LepiMap 632148
- UCT-ADU LepiMAP; Pine Valley; 15/10/2017; Kate Braun; LepiMAP 633099



Lomilema gracilipennis (Wallengren, 1860)
Malolotja and Mlawula Checklists
(*Eilema gracilipennis*)

Lysceia flava Kruger, 2017
UCT-ADU LepiMAP

- UCT-ADU LepiMAP; Pine Valley; 22/04/2017; Kate Braun; LepiMAP 622337
- UCT-ADU LepiMAP; Pine Valley; 26/04/2017; Kate Braun; LepiMAP 622879
- UCT-ADU LepiMAP; Pine Valley; 24/08/2017; Kate Braun; LepiMAP 630573
- UCT-ADU LepiMAP; Pine Valley; 24/01/2018; Kate Braun; LepiMAP 639729



***Lysceia* sp.**

UCT-ADU LepiMAP

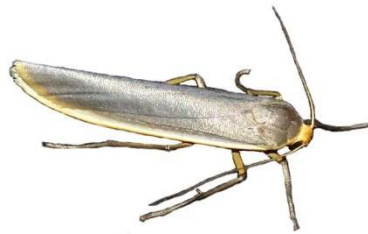
- UCT-ADU LepiMAP; Pine Valley; 22/09/2017; Kate Braun; LepiMAP 632128



Phryganopsis asperatella (Walker, 1864)
Malolotja and Mlawula Checklists

Sozusa scutellata (Wallengren, 1860)
Malolotja and Mlawula Checklists

- UCT-ADU LepiMAP; Pine Valley; 30/11/2016; Kate Braun; LepiMAP 610443
- UCT-ADU LepiMAP; Pine Valley; 17/03/2017; Kate Braun; LepiMAP 618131
- UCT-ADU LepiMAP; Pine Valley; 10/10/2017; Kate Braun; LepiMap 632722
- UCT-ADU LepiMAP; Pine Valley; 29/09/2018; Kate Braun; LepiMAP 658920
- UCT-ADU LepiMAP; Pine Valley; 01/10/2018; Kate Braun; LepiMAP 659294
- UCT-ADU LepiMAP; Siteki; 17/05/2015; de Beer Len; LepiMAP 572689



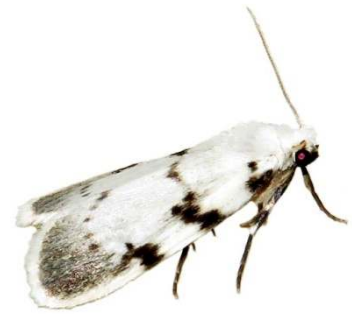
Erebidae: Arctiinae: Lithosiini

Campter goniophora (Hampson, 1900)
UCT-ADU LepiMap
(*Eilema goniophora*)

- UCT-ADU LepiMAP; Pine Valley; 01/12/2016; Kate Braun; LepiMAP 610463
- UCT-ADU LepiMAP; Pine Valley; 17/02/2017; Kate Braun; LepiMAP 615899

Cyana marshalli (Hampson, 1900)

- UCT-ADU LepiMAP; Afromoths: TMSA
- UCT-ADU LepiMAP; Pine Valley; 27/12/2017; Kate Braun; LepiMAP 637295
 - UCT-ADU LepiMAP; Pine Valley; 19/04/2017; Kate Braun; LepiMAP 621974
 - UCT-ADU LepiMAP; Pine Valley; 16/08/2017; Kate Braun; LepiMAP 630292



Cyana rejecta (Walker, 1854)
Malolotja and Mlawula Checklists
(*Cyana bipunctigera*, *Lexis bipunctigera*)

- UCT-ADU LepiMAP; Pine Valley; 23/04/2017; Kate Braun; LepiMAP 622349
- UCT-ADU LepiMAP; Pine Valley; 22/05/2017; Kate Braun; LepiMAP 626414
- UCT-ADU LepiMAP; Pine Valley; 09/10/2017; Kate Braun; LepiMap 632612
- UCT-ADU LepiMAP; Pine Valley; 09/11/2017; Kate Braun; LepiMAP 634481



Cyana rhodostriata (Hampson, 1914)
UCT-ADU LepiMap

- UCT-ADU LepiMAP; Pine Valley; 30/09/2018; Kate Braun; LepiMAP 659131
- UCT-ADU LepiMAP; Pine Valley; 31/12/2017; Kate Braun; LepiMAP 667119



Eurosia lineata Hampson, 1900
UCT-ADU LepiMAP

- UCT-ADU LepiMAP; Pine Valley; 09/02/2018; Kate Braun; LepiMAP 640516
- UCT-ADU LepiMAP; Pine Valley; 21/01/2018; Kate Braun; LepiMAP 639580



Pseudocragia quadrinotata (Walker, 1864)
Malolotja and Mlawula Checklists
(*Tigrioides quadrinotata*, *Setina quadrinotata*)

Siccia caffra Walker, 1854

Malolotja and Mlawula Checklists

- UCT-ADU LepiMAP; Pine Valley; 13/01/2018; Kate Braun; LepiMAP 638963
- UCT-ADU LepiMAP; Pine Valley; 04/04/2017; Kate Braun; LepiMAP 620228
- UCT-ADU LepiMAP; Pine Valley; 22/09/2017; Kate Braun; LepiMap 632149
- UCT-ADU LepiMAP; Pine Valley; 13/08/2017; Kate Braun; LepiMAP 630028
- UCT-ADU LepiMAP; Pine Valley; 02/11/2017; Kate Braun; LepiMAP 634044
- UCT-ADU LepiMAP; Pine Valley; 16/12/2017; Kate Braun; LepiMAP 636286
- UCT-ADU LepiMAP; Pine Valley; 01/02/2018; Kate Braun; LepiMAP 640112
- UCT-ADU LepiMAP; Pine Valley; 13/03/2018; Kate Braun; LepiMAP 642730
- UCT-ADU LepiMAP; Pine Valley; 18/03/2018; Kate Braun; LepiMAP 643161
- UCT-ADU LepiMAP; Pine Valley; 02/04/2018; Kate Braun; LepiMAP 644819
- UCT-ADU LepiMAP; Pine Valley; 10/10/2018; Kate Braun; LepiMAP 660199
- UCT-ADU LepiMAP; Pine Valley; 01/10/2018; Kate Braun; LepiMAP 659293
- UCT-ADU LepiMAP; Pine Valley; 09/04/2018; Kate Braun; LepiMAP 645319
- UCT-ADU LepiMAP; Mlawula; 27/06/2017; Kate Braun; LepiMAP 628571
- UCT-ADU LepiMAP; Pine Valley; 20/03/2017; Kate Braun; LepiMAP 618601
- UCT-ADU LepiMAP; Pine Valley; 17/02/2017; Kate Braun; LepiMAP 615882
- UCT-ADU LepiMAP; Pine Valley; 29/01/2017; Kate Braun; LepiMAP 613916
- UCT-ADU LepiMAP; Pine Valley; 23/12/2016; Kate Braun; LepiMAP 611398
- UCT-ADU LepiMAP; Pine Valley; 20/12/2016; Kate Braun; LepiMAP 611384
- UCT-ADU LepiMAP; Pine Valley; 28/11/2016; Kate Braun; LepiMAP 610420
- UCT-ADU LepiMAP; Pine Valley; 06/04/2016; Kate Braun; LepiMAP 592677
- UCT-ADU LepiMAP; Pine Valley; 14/03/2016; Kate Braun; LepiMAP 591094
- UCT-ADU LepiMAP; Pine Valley; 26/02/2015; Kate Braun; LepiMAP 564369
- UCT-ADU LepiMAP; Pine Valley; 25/02/2013; Kate Braun; LepiMAP 28711
- UCT-ADU LepiMAP; Pine Valley; 01/01/2010; Kate Braun; LepiMAP 10908
- UCT-ADU LepiMAP; Pine Valley; 28/10/2018; Kate Braun; LepiMAP 661061
- UCT-ADU LepiMAP; Mlawula; 06/09/2017; Kate Braun; LepiMap 631941
- UCT-ADU LepiMAP; Pine Valley; 28/03/2017; Kate Braun; LepiMAP 619308



Siccia punctipennis (Wallengren, 1860)
UCT-ADU LepiMap

- UCT-ADU LepiMAP; Mlawula; 18/01/2017; Kate Braun; LepiMAP 612677
- UCT-ADU LepiMAP; Phophonyane; 13/12/2018; Kate Braun; LepiMAP 665130



Tumicla sagenaria (Wallengren, 1860)
UCT-ADU LepiMap
(*Asura sagenaria*)

- UCT-ADU LepiMAP; Pine Valley; 20/03/2017; Kate Braun; LepiMAP 618530



Erebiae: Arctiinae: Incertae Sedis

Exilis bipuncta (Hampson, 1900)
Malolotja and Mlawula Checklists
(*Ochrota bipuncta*)

Erebiae: Arctiinae: Syntomini

Amata kuhlweini (Lefébvre, 1832)
Malolotja and Mlawula Checklists
(*Syntomis kuhlweini*)

- UCT-ADU LepiMAP; Pine Valley; 28/03/2017; Kate Braun; LepiMAP 619258



Apisa canescens Walker, 1855
Malolotja and Mlawula Checklists



Automolis meteus (Cramer, 1781)
Malolotja and Mlawula Checklists



Cacosoma gnatura (Boisduval, 1847)
Malolotja and Mlawula Checklists

Metarctia lateritia (Herrich-Schäffer, 1855)
Malolotja and Mlawula Checklists;
Afro-moths: TMSA
(*Automolis lateritia*)

Metarctia rufescens Walker, 1855
Malolotja and Mlawula Checklists
(*Automolis rufescens*)

Metarctia unicolor (Oberthür, 1880)
(*Automolis unicolor subsp. unicolor*)
UCT-ADU LepiMap

- UCT-ADU LepiMAP; Pine Valley; 10/02/2007; Kate Braun; LepiMAP 10781



Metarctia sp.
UCT-ADU LepiMap

- UCT-ADU LepiMAP; Pine Valley; 03/02/2015; Kate Braun; LepiMAP 562433
- UCT-ADU LepiMAP; Pine Valley; 11/01/2017; Kate Braun; LepiMAP 612496
- UCT-ADU LepiMAP; Pine Valley; 26/01/2017; Kate Braun; LepiMAP 613563
- UCT-ADU LepiMAP; Pine Valley; 01/02/2017; Kate Braun; LepiMAP 614277
- UCT-ADU LepiMAP; Pine Valley; 01/01/2018; Kate Braun; LepiMAP 637798



Pseudonacia puella puella (Boisduval, 1847)

Malolotja and Mlawula Checklists
(*Pseudonacia puella*)

- UCT-ADU LepiMAP; Mlawula; 09/11/2014; Kate Braun; LepiMAP 555183
- UCT-ADU LepiMAP; Mlawula; 22/04/2014; Kate Braun; LepiMAP 44938
- UCT-ADU LepiMAP; Mlawula; 20/12/2013; de Beer Len; LepiMAP 39335



Thyretes caffra Wallengren, 1863

UCT-ADU LepiMap

- UCT-ADU LepiMAP; Pine Valley; 25/09/2017; Kate Braun; LepiMap 632247
- UCT-ADU LepiMAP; Pine Valley; 27/10/2018; Kate Braun; LepiMAP 660954
- UCT-ADU LepiMAP; Pine Valley; 01/10/2018; Kate Braun; LepiMAP 659277
- UCT-ADU LepiMAP; Pine Valley; 09/04/2018; Kate Braun; LepiMAP 645336
- UCT-ADU LepiMAP; Pine Valley; 03/04/2018; Kate Braun; LepiMAP 644850
- UCT-ADU LepiMAP; Pine Valley; 13/03/2018; Kate Braun; LepiMAP 642756
- UCT-ADU LepiMAP; Pine Valley; 09/03/2018; Kate Braun; LepiMAP 642587
- UCT-ADU LepiMAP; Pine Valley; 12/01/2018; Kate Braun; LepiMAP 638956
- UCT-ADU LepiMAP; Pine Valley; 03/01/2018; Kate Braun; LepiMAP 637965
- UCT-ADU LepiMAP; Pine Valley; 16/12/2017; Kate Braun; LepiMAP 636302
- UCT-ADU LepiMAP; Pine Valley; 09/12/2017; Kate Braun; LepiMAP 635800
- UCT-ADU LepiMAP; Pine Valley; 12/11/2017; Kate Braun; LepiMAP 634703

- UCT-ADU LepiMAP; Pine Valley; 19/10/2017; Kate Braun; LepiMAP 633330
- UCT-ADU LepiMAP; Pine Valley; 22/09/2017; Kate Braun; LepiMap 632129
- UCT-ADU LepiMAP; Pine Valley; 24/08/2017; Kate Braun; LepiMap 630576
- UCT-ADU LepiMAP; Pine Valley; 15/08/2017; Kate Braun; LepiMAP 630270
- UCT-ADU LepiMAP; Pine Valley; 28/04/2017; Kate Braun; LepiMAP 623552
- UCT-ADU LepiMAP; Pine Valley; 04/02/2017; Kate Braun; LepiMAP 614696
- UCT-ADU LepiMAP; Pine Valley; 29/01/2017; Kate Braun; LepiMAP 613895
- UCT-ADU LepiMAP; Pine Valley; 01/12/2016; Kate Braun; LepiMAP 610459
- UCT-ADU LepiMAP; Pine Valley; 11/01/2016; Kate Braun; LepiMAP 587006
- UCT-ADU LepiMAP; Pine Valley; 15/03/2015; Kate Braun; LepiMAP 565833
- UCT-ADU LepiMAP; Pine Valley; 26/02/2015; Kate Braun; LepiMAP 564368
- UCT-ADU LepiMAP; Mlawula; 23/03/2017; Kate Braun; LepiMAP 619010
- UCT-ADU LepiMAP; Pine Valley; 06/11/2017; Kate Braun; LepiMAP 634312



Trichaeta pterophorina (Mabille, 1892)

UCT-ADU LepiMAP

- UCT-ADU LepiMAP; Mlawula; 20/12/2013; de Beer Len; LepiMAP 39341



Erebidae: Arctiinae: Tinoliinae

Campteropsis asaphogramma Krüger, 2016

Afromoths: TMSA

- AfroMoths; Malagwane Hill; 14/01/1996; N J Duke;

Galactilema lactipenne Krüger, 2015

Afromoths: TMSA

Gracililema proleuca (Hampson, 1914)

Afromoths: TMSA

Lysceia bigutta Walker, 1854

Afromoths: TMSA

Oedipygilema aposema (Kühne, 2010)

Afromoths: TMSA

Oreadilema othereis Krüger, 2015

Afromoths: TMSA

- AfroMoths; Mbabane; 07/02/1992; N J Duke;

Erebidae: Boletobiinae

Undescribed genus

UCT-ADU LepiMap

- UCT-ADU LepiMAP; Pine Valley; 31/01/2017; Kate Braun; LepiMAP 614178
- UCT-ADU LepiMAP; Pine Valley; 12/03/2017; Kate Braun; LepiMAP 617745



Erebidae: Boletobiinae: Eublemmiini

Autoba admota (Felder R. & Rogenhofer, 1875)

Malolotja and Mlawula Checklists



*

Autoba brachygonia Hampson, 1910

Malolotja and Mlawula Checklists

(*Eublemma brachygonia*)

Autoba costimacula (Saalmüller, 1880)

Malolotja and Mlawula Checklists

(*Eublemma costimacula*)

- UCT-ADU LepiMAP; Pine Valley; 10/02/2017; Kate Braun; LepiMAP 615245
- UCT-ADU LepiMAP; Pine Valley; 17/03/2017; Kate Braun; LepiMAP 618164
- UCT-ADU LepiMAP; Pine Valley; 21/03/2017; Kate Braun; LepiMAP 618674



Cerynea thermesialis (Walker, 1866)

Malolotja and Mlawula Checklists

(*Busmadis thermesialis*)

- UCT-ADU LepiMAP; Pine Valley; 19/04/2017; Kate Braun; LepiMAP 621973
- UCT-ADU LepiMAP; Pine Valley; 18/03/2017; Kate Braun; LepiMAP 618327
- UCT-ADU LepiMAP; Pine Valley; 27/10/2018; Kate Braun; LepiMAP 660962
- UCT-ADU LepiMAP; Pine Valley; 02/10/2018; Kate Braun; LepiMAP 659397
- UCT-ADU LepiMAP; Pine Valley; 06/04/2018; Kate Braun; LepiMAP 644940
- UCT-ADU LepiMAP; Pine Valley; 23/01/2018; Kate Braun; LepiMAP 639657

- UCT-ADU LepiMAP; Pine Valley; 02/11/2017; Kate Braun; LepiMAP 634045
- UCT-ADU LepiMAP; Pine Valley; 19/04/2017; Kate Braun; LepiMAP 621957
- UCT-ADU LepiMAP; Pine Valley; 19/04/2017; Kate Braun; LepiMAP 621948
- UCT-ADU LepiMAP; Pine Valley; 02/11/2017; Kate Braun; LepiMAP 634049



***Cerynea virescens* Hampson, 1910**

UCT-ADU LepiMAP

- UCT-ADU LepiMAP; Mlawula; 27/06/2017; Kate Braun; LepiMAP 628584
- UCT-ADU LepiMAP; Pine Valley; 23/10/2016; Kate Braun; LepiMAP 607833
- UCT-ADU LepiMAP; Pine Valley; 21/03/2017; Kate Braun; LepiMAP 618677
- UCT-ADU LepiMAP; Pine Valley; 14/04/2017; Kate Braun; LepiMAP 621147



***Cerynea* sp.**

UCT-ADU LepiMAP

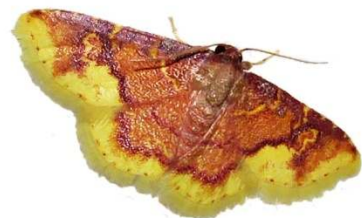
- UCT-ADU LepiMAP; Pine Valley; 20/04/2017; Kate Braun; LepiMAP 622018
- UCT-ADU LepiMAP; Pine Valley; 21/10/2017; Kate Braun; LepiMAP 633819



***Chrysozonata latiflavoria* (Swinhoe, 1904)**

UCT-ADU LepiMAP Swaziland Species List Nov 2016

- UCT-ADU LepiMAP; Pine Valley; 25/09/2017; Kate Braun; LepiMAP 632249
- UCT-ADU LepiMAP; Malolotja; 20/03/2010; Webb P.; LepiMAP 11927
- UCT-ADU LepiMAP; Pine Valley; 23/12/2016; Kate Braun; LepiMAP 611399
- UCT-ADU LepiMAP; Pine Valley; 11/09/2017; Kate Braun; LepiMAP 632048



***Chrysozonata purpurascens* Hampson, 1914**

UCT-ADU LepiMAP

- UCT-ADU LepiMAP; Pine Valley; 02/12/2015; Kate Braun; LepiMAP 586760



***Corgatha producta* Hampson, 1902**

Malolotja and Mlawula Checklists

- UCT-ADU LepiMAP; Pine Valley; 15/10/2017; Kate Braun; LepiMAP 633130
- UCT-ADU LepiMAP; Pine Valley; 12/02/2018; Kate Braun; LepiMAP 640806
- UCT-ADU LepiMAP; Pine Valley; 25/09/2018; Kate Braun; LepiMAP 658556
- UCT-ADU LepiMAP; Pine Valley; 11/11/2018; Kate Braun; LepiMAP 662196
- UCT-ADU LepiMAP; Pine Valley; 01/01/2019; Kate Braun; LepiMAP 667306



***Enispa albigrisea* (Warren, 1914)**

UCT-ADU LepiMAP

- UCT-ADU LepiMAP; Pine Valley; 21/03/2017; Kate Braun; LepiMAP 618652



***Eublemma acarodes* Swinhoe, 1907**

UCT-ADU LepiMAP

- UCT-ADU LepiMAP; Pine Valley; 29/12/2018; Kate Braun; LepiMAP 666682



***Eublemma anachoresis* (Wallengren, 1863)**

Malolotja and Mlawula Checklists

- UCT-ADU LepiMAP; Pine Valley; 14/03/2018; Kate Braun; LepiMAP 642771
- UCT-ADU LepiMAP; Pine Valley; 10/10/2018; Kate Braun; LepiMAP 660190
- UCT-ADU LepiMAP; Pine Valley; 18/03/2018; Kate Braun; LepiMAP 643164
- UCT-ADU LepiMAP; Pine Valley; 20/01/2018; Kate Braun; LepiMAP 639495
- UCT-ADU LepiMAP; Pine Valley; 25/04/2017; Kate Braun; LepiMAP 622638
- UCT-ADU LepiMAP; Pine Valley; 19/04/2017; Kate Braun; LepiMAP 621935
- UCT-ADU LepiMAP; Pine Valley; 10/04/2017; Kate Braun; LepiMAP 620728
- UCT-ADU LepiMAP; Pine Valley; 15/03/2017; Kate Braun; LepiMAP 618044
- UCT-ADU LepiMAP; Pine Valley; 03/01/2017; Kate Braun; LepiMAP 612071
- UCT-ADU LepiMAP; Pine Valley; 29/12/2016; Kate Braun; LepiMAP 611420
- UCT-ADU LepiMAP; Pine Valley; 05/04/2016; Kate Braun; LepiMAP 592662
- UCT-ADU LepiMAP; Malolotja; 07/04/2018; Kate Braun; LepiMAP 645109
- UCT-ADU LepiMAP; Malolotja; 23/12/2011; Kate Braun; LepiMAP 44074
- UCT-ADU LepiMAP; Malolotja; 14/03/2010; Kate Braun; LepiMAP 12331
- UCT-ADU LepiMAP; Pine Valley; 29/03/2017; Kate Braun; LepiMAP 619397
- UCT-ADU LepiMAP; Pine Valley; 02/04/2018; Kate Braun; LepiMAP 644823



***Eublemma apicata* Distant, 1898**

Malolotja and Mlawula Checklists

***Eublemma baccalix* (Swinhoe, 1886)**

Malolotja and Mlawula Checklists

- UCT-ADU LepiMAP; Pine Valley; 04/04/2018; Kate Braun; LepiMAP 644857
- UCT-ADU LepiMAP; Pine Valley; 14/03/2018; Kate Braun; LepiMAP 642808
- UCT-ADU LepiMAP; Pine Valley; 23/04/2017; Kate Braun; LepiMAP 622369
- UCT-ADU LepiMAP; Pine Valley; 13/08/2017; Kate Braun; LepiMAP 630031



Eublemma bolinia (Hampson, 1902)
Malolotja and Mlawula Checklists



Eublemma flavicosta Hampson, 1910
Malolotja and Mlawula Checklists

Eublemma foedosa (Guenée, 1852)
Malolotja and Mlawula Checklists

- UCT-ADU LepiMAP; Pine Valley; 02/10/2018; Kate Braun; LepiMAP 659385
- UCT-ADU LepiMAP; Pine Valley; 10/02/2018; Kate Braun; LepiMAP 640585
- UCT-ADU LepiMAP; Pine Valley; 02/10/2018; Kate Braun; LepiMAP 659389
- UCT-ADU LepiMAP; Pine Valley; 26/10/2018; Kate Braun; LepiMAP 660855
- UCT-ADU LepiMAP; Pine Valley; 16/12/2017; Kate Braun; LepiMAP 636280
- UCT-ADU LepiMAP; Pine Valley; 12/10/2017; Kate Braun; LepiMAP 632811
- UCT-ADU LepiMAP; Pine Valley; 25/09/2017; Kate Braun; LepiMap 632252
- UCT-ADU LepiMAP; Pine Valley; 11/09/2017; Kate Braun; LepiMap 632066
- UCT-ADU LepiMAP; Pine Valley; 02/10/2018; Kate Braun; LepiMAP 659401
- UCT-ADU LepiMAP; Pine Valley; 14/01/2018; Kate Braun; LepiMAP 639162

Eublemma parva (Hübner, 1808)

UCT-ADU LepiMAP

- UCT-ADU LepiMAP; Pine Valley; 04/04/2017; Kate Braun; LepiMAP 620243
- UCT-ADU LepiMAP; Pine Valley; 22/09/2017; Kate Braun; LepiMap 632156
- UCT-ADU LepiMAP; Pine Valley; 29/09/2017; Kate Braun; LepiMap 632367



Eublemma ragusana (Freyer, 1844)
Malolotja and Mlawula Checklists
(*Honeyania ragusana*)

- UCT-ADU LepiMAP; Pine Valley; 20/03/2017; Kate Braun; LepiMAP 618518
- UCT-ADU LepiMAP; Pine Valley; 13/03/2018; Kate Braun; LepiMAP 642728



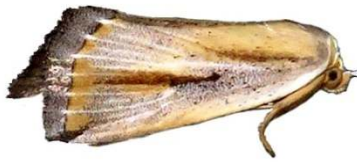
Eublemma chionophlebia Hampson, 1910
UCT-ADU LepiMap

- UCT-ADU LepiMAP; Malolotja; 07/04/2018; Kate Braun; LepiMAP 645130



Eublemma cochylioides (Guenée, 1852)
UCT-ADU LepiMap

- UCT-ADU LepiMAP; Pine Valley; 11/02/2017; Kate Braun; LepiMAP 615289



Eublemma gayneri (Rothschild, 1901)
UCT-ADU LepiMAP

- UCT-ADU LepiMAP; Pine Valley; 15/10/2017; Kate Braun; LepiMAP 633102



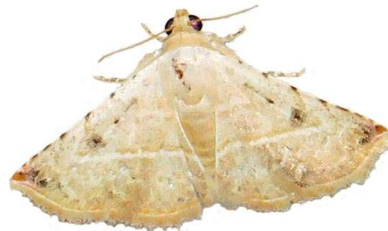
Eublemma rubripuncta (Hampson, 1902)
Malolotja and Mlawula Checklists
(*Metachrostis rubripuncta*)

Eublemma seminivea Hampson, 1896
UCT-ADU LepiMAP

- UCT-ADU LepiMAP; Pine Valley; 16/12/2017; Kate Braun; LepiMAP 636305
- UCT-ADU LepiMAP; Pine Valley; 18/04/2017; Kate Braun; LepiMAP 621839



Eublemma flaviceps Hampson, 1902
UCT-ADU LepiMap Swaziland Species List
Nov 2016



Eublemma mesophaea Hampson, 1910
Malolotja and Mlawula Checklists

Eublemma ornata (Felder & Rogenhofer, 1874)

- UCT-ADU LepiMAP; Malolotja; 14/03/2010; Kate Braun; LepiMAP 12321



Eublemma sperans (Felder & Rogenhofer, 1874)

Malolotja and Mlawula Checklists

Eublemma therma Hampson, 1910
UCT-ADU LepiMAP

- UCT-ADU LepiMAP; Pine Valley; 29/12/2018; Kate Braun; LepiMAP 666639





Hypercodia wheeleri Pinhey, 1968
UCT-ADU LepiMAP

- UCT-ADU LepiMAP; Pine Valley; 10/04/2017; Kate Braun; LepiMAP 620722
- UCT-ADU LepiMAP; Pine Valley; 28/03/2017; Kate Braun; LepiMAP 619280
- UCT-ADU LepiMAP; Pine Valley; 09/03/2018; Kate Braun; LepiMAP 642584
- UCT-ADU LepiMAP; Pine Valley; 17/12/2017; Kate Braun; LepiMAP 636425
- UCT-ADU LepiMAP; Pine Valley; 11/02/2017; Kate Braun; LepiMAP 615279
- UCT-ADU LepiMAP; Pine Valley; 18/03/2017; Kate Braun; LepiMAP 618318
- UCT-ADU LepiMAP; Pine Valley; 15/02/2017; Kate Braun; LepiMAP 615656
- UCT-ADU LepiMAP; Pine Valley; 11/02/2017; Kate Braun; LepiMAP 615282
- UCT-ADU LepiMAP; Pine Valley; 20/11/2017; Kate Braun; LepiMAP 635348
- UCT-ADU LepiMAP; Pine Valley; 21/03/2017; Kate Braun; LepiMAP 618655



Lithacodia caffristis Hampson, 1910
UCT-ADU LepiMAP

- UCT-ADU LepiMAP; Pine Valley; 24/12/2017; Kate Braun; LepiMAP 636930
- UCT-ADU LepiMAP; Pine Valley; 28/03/2017; Kate Braun; LepiMAP 619262
- UCT-ADU LepiMAP; Pine Valley; 21/03/2017; Kate Braun; LepiMAP 618660
- UCT-ADU LepiMAP; Pine Valley; 09/04/2018; Kate Braun; LepiMAP 645322
- UCT-ADU LepiMAP; Pine Valley; 14/02/2018; Kate Braun; LepiMAP 640929
- UCT-ADU LepiMAP; Pine Valley; 20/11/2017; Kate Braun; LepiMAP 635368
- UCT-ADU LepiMAP; Pine Valley; 12/11/2017; Kate Braun; LepiMAP 634688
- UCT-ADU LepiMAP; Pine Valley; 09/11/2017; Kate Braun; LepiMAP 634472
- UCT-ADU LepiMAP; Pine Valley; 17/03/2017; Kate Braun; LepiMAP 618140
- UCT-ADU LepiMAP; Pine Valley; 25/02/2017; Kate Braun; LepiMAP 617101
- UCT-ADU LepiMAP; Pine Valley; 04/02/2017; Kate Braun; LepiMAP 614632
- UCT-ADU LepiMAP; Pine Valley; 13/03/2018; Kate Braun; LepiMAP 642727



***Lithacodia* sp.**

- UCT-ADU LepiMAP
- UCT-ADU LepiMAP; Pine Valley; 16/12/2017; Kate Braun; LepiMAP 636277

Lophocytarra phoenicoxantha Hampson, 1914
Malolotja and Mlawula Checklists

Metachrostis decora (Walker, 1869)
Malolotja and Mlawula Checklists,
UCT-ADU LepiMAP
(*Eublemma decora*)

- UCT-ADU LepiMAP; Pine Valley; 04/04/2017; Kate Braun; LepiMAP 620239
- UCT-ADU LepiMAP; Pine Valley; 20/04/2017; Kate Braun; LepiMAP 622017
- UCT-ADU LepiMAP; Pine Valley; 14/01/2018; Kate Braun; LepiMAP 639157



Metachrostis snelleni (Wallengren, 1875)
Malolotja and Mlawula Checklists
(*Zalaca snelleni*)

Oruza latifera (Walker, 1869)
UCT-ADU LepiMAP

- UCT-ADU LepiMAP; Pine Valley; 23/12/2017; Kate Braun; LepiMAP 636790
- UCT-ADU LepiMAP; Pine Valley; 09/04/2018; Kate Braun; LepiMAP 645321
- UCT-ADU LepiMAP; Pine Valley; 18/04/2017; Kate Braun; LepiMAP 621856
- UCT-ADU LepiMAP; Pine Valley; 20/04/2017; Kate Braun; LepiMAP 622021



***Oruza* sp.**
UCT-ADU LepiMAP

- UCT-ADU LepiMAP; Malolotja; 20/03/2010; Webb P.; LepiMAP 11928



Paroruzza subductata (Walker, 1861)
Malolotja and Mlawula Checklists

Pseudomicrodes mediorufa Hampson, 1910
Malolotja and Mlawula Checklists

Tegeia larentiodes (Prout A. E., 1922)
Malolotja and Mlawula Checklists

***Trogocraspis* sp. 1**
UCT-ADU LepiMAP

- UCT-ADU LepiMAP; Pine Valley; 01/01/19; Kate Braun; LepiMAP 667323



Erebidae: Boletobiinae: Phytometrini

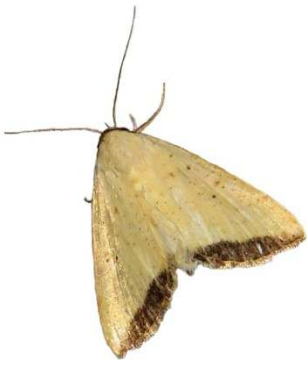
Antarchaea fragilis Butler, 1875
Afro-moths: TMSA
(*Phytometra fragilis*)

- UCT-ADU LepiMAP; Pine Valley; 29/03/2017; Kate Braun; LepiMAP 619375
- UCT-ADU LepiMAP; Pine Valley; 28/03/2017; Kate Braun; LepiMAP 619276



Antarchaea subflavalis (Walker, 1866)
Malolotja and Mlawula Nature Reserve
Checklists, Afro-moths: TMSA
(*Phytometra subflavalis*)

- UCT-ADU LepiMAP; Pine Valley; 23/04/2017; Kate Braun; LepiMAP 622356
- UCT-ADU LepiMAP; Pine Valley; 18/04/2017; Kate Braun; LepiMAP 621822
- UCT-ADU LepiMAP; Pine Valley; 14/04/2017; Kate Braun; LepiMAP 621152
- UCT-ADU LepiMAP; Pine Valley; 14/04/2017; Kate Braun; LepiMAP 621128
- UCT-ADU LepiMAP; Pine Valley; 28/03/2017; Kate Braun; LepiMAP 619289
- UCT-ADU LepiMAP; Pine Valley; 20/03/2017; Kate Braun; LepiMAP 618557
- UCT-ADU LepiMAP; Maphalaleni Road; 30/04/2013; Kate Braun; LepiMAP 30767
- UCT-ADU LepiMAP; Pine Valley; 20/03/2017; Kate Braun; LepiMAP 618537



Phytometra duplicalis (Walker, 1866)

Afromoths: TMSA

- UCT-ADU LepiMAP; Pine Valley; 09/04/2018; Kate Braun; LepiMAP 645320
- UCT-ADU LepiMAP; Pine Valley; 07/04/2018; Kate Braun; LepiMAP 645067
- UCT-ADU LepiMAP; Pine Valley; 28/03/2017; Kate Braun; LepiMAP 619283
- AfroMoths; Manzini, Lugaganene; 16/02/1996; C Saunders; TMSA
- UCT-ADU LepiMAP; Pine Valley; 21/04/2017; Kate Braun; LepiMAP 622054



Phytometra helirusalis (Walker, 1859)

Afromoths: TMSA

Phytometra hypopsamma (Hampson, 1926)

Afromoths: TMSA

Phytometra opsiphora (Hampson, 1926)

Malolotja and Mlawula Checklists;

Afromoths: TMSA

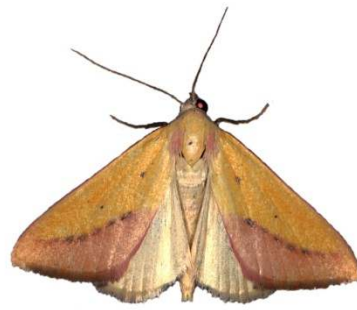
- AfroMoths; Mbabane; 24/01/1993; N J Duke; TMSA
- UCT-ADU LepiMAP; Pine Valley; 25/12/2018; Kate Braun; LepiMAP 666277



Phytometra sacraria (Felder & Rogenhofer, 1874)

Malolotja and Mlawula Checklists;

Afromoths: TMSA



*

Phytometra silona (Schaus, 1893)

Malolotja and Mlawula Checklists

Erebidae: *Calpinae*

Antiophlebia bracteata Felder R., 1874

UCT-ADU LepiMAP

- UCT-ADU LepiMAP; Pine Valley; 29/09/2017; Kate Braun; LepiMap 632362



Disticta atava (Felder R. & Rogenhofer, 1875)

Malolotja and Mlawula Checklists;

Afromoths: TMSA

- UCT-ADU LepiMAP; Pine Valley; 24/01/2018; Kate Braun; LepiMAP 639731
- UCT-ADU LepiMAP; Pine Valley; 10/12/2017; Kate Braun; LepiMAP 635829
- UCT-ADU LepiMAP; Pine Valley; 18/03/2018; Kate Braun; LepiMAP 643177
- UCT-ADU LepiMAP; Pine Valley; 16/12/2017; Kate Braun; LepiMAP 636285
- UCT-ADU LepiMAP; Pine Valley; 09/11/2017; Kate Braun; LepiMAP 634463
- UCT-ADU LepiMAP; Pine Valley; 24/12/2017; Kate Braun; LepiMAP 636923
- UCT-ADU LepiMAP; Pine Valley; 12/01/2018; Kate Braun; LepiMAP 638937
- UCT-ADU LepiMAP; Pine Valley; 12/11/2017; Kate Braun; LepiMAP 634668
- UCT-ADU LepiMAP; Pine Valley; 09/02/2018; Kate Braun; LepiMAP 640534
- UCT-ADU LepiMAP; Pine Valley; 09/03/2018; Kate Braun; LepiMAP 642595
- UCT-ADU LepiMAP; Pine Valley; 13/03/2018; Kate Braun; LepiMAP 642755
- UCT-ADU LepiMAP; Pine Valley; 01/10/2018; Kate Braun; LepiMAP 659303
- UCT-ADU LepiMAP; Pine Valley; 15/10/2018; Kate Braun; LepiMAP 660462
- UCT-ADU LepiMAP; Pine Valley; 26/10/2018; Kate Braun; LepiMAP 660851
- UCT-ADU LepiMAP; Pine Valley; 06/11/2017; Kate Braun; LepiMAP 634313
- UCT-ADU LepiMAP; Pine Valley; 14/03/2018; Kate Braun; LepiMAP 642805
- UCT-ADU LepiMAP; Pine Valley; 07/01/2016; Kate Braun; LepiMAP 586986
- UCT-ADU LepiMAP; Pine Valley; 10/10/2018; Kate Braun; LepiMAP 660185
- UCT-ADU LepiMAP; Pine Valley; 02/11/2015; Kate Braun; LepiMAP 582308
- UCT-ADU LepiMAP; Pine Valley; 14/01/2016; Kate Braun; LepiMAP 587008
- UCT-ADU LepiMAP; Pine Valley; 12/10/2017; Kate Braun; LepiMAP 632816

- UCT-ADU LepiMAP; Pine Valley; 12/11/2016; Kate Braun; LepiMAP 609643
- UCT-ADU LepiMAP; Pine Valley; 02/12/2016; Kate Braun; LepiMAP 610472
- UCT-ADU LepiMAP; Pine Valley; 23/12/2016; Kate Braun; LepiMAP 611393
- UCT-ADU LepiMAP; Pine Valley; 29/03/2017; Kate Braun; LepiMAP 619366
- UCT-ADU LepiMAP; Mlawula; 03/03/2014; Kate Braun; LepiMAP 41078
- UCT-ADU LepiMAP; Pine Valley; 24/01/2017; Kate Braun; LepiMAP 613215
- UCT-ADU LepiMAP; Pine Valley; 25/09/2017; Kate Braun; LepiMap 632245
- UCT-ADU LepiMAP; Pine Valley; 13/03/2017; Kate Braun; LepiMAP 617829
- UCT-ADU LepiMAP; Pine Valley; 24/02/2017; Kate Braun; LepiMAP 616548
- UCT-ADU LepiMAP; Pine Valley; 17/02/2017; Kate Braun; LepiMAP 615875
- UCT-ADU LepiMAP; Pine Valley; 03/02/2017; Kate Braun; LepiMAP 614473
- UCT-ADU LepiMAP; Pine Valley; 29/01/2017; Kate Braun; LepiMAP 613908



Egnasia vicaria vicaria (Walker, 1866)

UCT-ADU LepiMap Swaziland Species List
Nov 2016

- UCT-ADU LepiMAP; Pine Valley; 02/05/2018; Kate Braun; LepiMAP 647104
- UCT-ADU LepiMAP; Pine Valley; 23/02/2017; Kate Braun; LepiMAP 616516
- UCT-ADU LepiMAP; Pine Valley; 23/04/2017; Kate Braun; LepiMAP 622385
- UCT-ADU LepiMAP; Pine Valley; 27/12/2017; Kate Braun; LepiMAP 637282
- UCT-ADU LepiMAP; Pine Valley; 20/05/2017; Kate Braun; LepiMAP 626401
- UCT-ADU LepiMAP; Pine Valley; 11/05/2017; Kate Braun; LepiMAP 626398
- UCT-ADU LepiMAP; Pine Valley; 18/03/2018; Kate Braun; LepiMAP 643157
- UCT-ADU LepiMAP; Pine Valley; 19/04/2017; Kate Braun; LepiMAP 621962
- UCT-ADU LepiMAP; Pine Valley; 15/04/2017; Kate Braun; LepiMAP 621344
- UCT-ADU LepiMAP; Pine Valley; 29/03/2017; Kate Braun; LepiMAP 619402
- UCT-ADU LepiMAP; Pine Valley; 17/03/2017; Kate Braun; LepiMAP 618186
- AfroMoths; Mpsisi; 26/01/1991; N J Duke;
- UCT-ADU LepiMAP; Pine Valley; 18/03/2017; Kate Braun; LepiMAP 618323



Maxera brachypecten Hampson, 1926
AfroMoths: TMSA

- AfroMoths; Millers Falls, Mbabane; 19/03/1997; N J Duke; TMSA

Maxera digoniata (Hampson, 1902)
Malolotja and Mlawula Checklists;
AfroMoths: TMSA



Maxera marchalii (Boisduval, 1833)
Malolotja and Mlawula Checklists
(*Maxera nigriceps*)



Maxera zygia (Wallengren, 1863)
AfroMoths: Kiriakoff (1955)

Pantylidia anderson (Felder R. &
Rogenhofer, 1875)
AfroMoths: TMSA

- UCT-ADU LepiMAP; Pine Valley; 03/04/2018; Kate Braun; LepiMAP 644842
- AfroMoths; Malolotja; 23/02/1994; N J Duke; TMSA
- UCT-ADU LepiMAP; Pine Valley; 06/02/2017; Kate Braun; LepiMAP 614935
- UCT-ADU LepiMAP; Pine Valley; 17/02/2017; Kate Braun; LepiMAP 615884



Pantylidia scissa (Walker, 1865)
Malolotja and Mlawula Checklists

Radara prunescens (Hampson, 1902)
AfroMoths: TMSA

Radara subcupralis (Walker, 1866)
Malolotja and Mlawula Checklists;
AfroMoths: TMSA

- UCT-ADU LepiMAP; Pine Valley; 11/01/2016; Kate Braun; LepiMAP 586998
- AfroMoths; Malolotja; 04/03/1993; N J Duke; TMSA
- UCT-ADU LepiMAP; Mililwane; 22/03/2014; de Beer Len; LepiMAP 48710
- UCT-ADU LepiMAP; Pine Valley; 12/04/2008; Kate Braun; LepiMAP 646481
- UCT-ADU LepiMAP; Pine Valley; 16/12/2017; Kate Braun; LepiMAP 636328



Radara vacillans Walker, 1862
UCT-ADU LepiMap

- UCT-ADU LepiMAP; Pine Valley; 09/01/2018; Kate Braun; LepiMAP 638932
- UCT-ADU LepiMAP; Pine Valley; 19/04/2017; Kate Braun; LepiMAP 621933
- UCT-ADU LepiMAP; Pine Valley; 17/02/2017; Kate Braun; LepiMAP 615847
- UCT-ADU LepiMAP; Pine Valley; 18/04/2017; Kate Braun; LepiMAP 621850



Rhanidophora cinctigutta (Walker, 1862)
Malolotja and Mlawula Checklists;
AfroMoths: TMSA

- UCT-ADU LepiMAP; Phophonyane; 04/02/2006; Roland H; LepiMAP 556591
- UCT-ADU LepiMAP; Pine Valley; 13/02/2011; Kate Braun; LepiMAP 17938
- UCT-ADU LepiMAP; Pine Valley; 23/01/2015; Kate Braun; LepiMAP 560710
- UCT-ADU LepiMAP; Pine Valley; 06/02/2016; Kate Braun; LepiMAP 587962
- UCT-ADU LepiMAP; Pine Valley; 16/08/2017; Kate Braun; LepiMAP 630300
- UCT-ADU LepiMAP; Pine Valley; 11/10/2018; Kate Braun; LepiMAP 660304



Rhanidophora phedonia (Cramer, 1781)
Malolotja and Mlawula Checklists;
AfroMoths: TMSA

- UCT-ADU LepiMAP; Pine Valley; 11/01/2016; Kate Braun; LepiMAP 587001
- UCT-ADU LepiMAP; Mlawula; 16/11/2017; Kate Braun; LepiMAP 635132
- UCT-ADU LepiMAP; Piggs Peak; 26/09/2014; Eckley Tommy; LepiMAP 552492
- UCT-ADU LepiMAP; Pine Valley; 18/01/2018; Kate Braun; LepiMAP 639448



Rhanidophora ridens Hampson, 1902
UCT-ADU LepiMap; AfroMoths: TMSA

- Project Noah; Mlawula; 01/04/2014; Pamela Sai; PN 232086026
- Project Noah; Mlawula; 11/11/2013; Tina Petterson; PN 78706061
- Project Noah; Hlane; 05/04/2014; Tina Petterson; PN 258056003
- ISpot; Lusip, Kasi Mingi; 27/12/2014; Klerk; ISpot 6366017



Rhesalides natalensis Hampson, 1926
Malolotja and Mlawula Checklists

Serodes partita (Fabricius, 1775)
Malolotja and Mlawula Checklists;
AfroMoths: TMSA

- UCT-ADU LepiMAP; Pine Valley; 15/10/2018; Kate Braun; LepiMAP 660453



Taviodes subjecta (Walker, 1865)
Malolotja and Mlawula Checklists;
AfroMoths: TMSA

Erebidae: Calpinae: Calpini

Oraesia emarginata (Fabricius, 1794)
UCT-ADU LepiMap

- UCT-ADU LepiMAP; Mlawula; 18/01/2017; Kate Braun; LepiMAP 612800



Oraesia provocans Walker, 1858
Malolotja and Mlawula Checklists;
Afromoths: Krüger (2015)

- AfroMoths; Malolotja; 02/01/1995; N J Duke; TMSA



Oraesia trioblqua (Saalmüller, 1880)
Afromoths: TMSA

- UCT-ADU LepiMAP; Rosecraft Farm; 08/11/2018; Kate Braun; LepiMAP 661956



Plusiodonta commoda Walker, 1865
Afromoths: TMSA

Plusiodonta natalensis Walker, 1865
Malolotja and Mlawula Checklists



Plusiodonta wahlbergi (Felder & Rogenhofer, 1874)
Afromoths: TMSA

- AfroMoths; Manzini, Lugaganene; 16/02/1996; C Saunders; TMSA

Erebidae: Calpinae: Ophiderini

Bareia incidens Walker, 1858
Afromoths: TMSA



Eudocima materna (Linnaeus, 1767)
Malolotja and Mlawula Checklists;
Afromoths: TMSA
(*Elygea materna*)

- iNaturalist; Mlawula; 19/02/2016; Kate Braun; iNaturalist 11163773

- UCT-ADU LepiMAP; Mlawula; 11/11/2013; deBeer Len deBeer; Jemma de Beer; LepiMAP 37350
- AfroMoths; Malolotja; 02/04/1995; N J Duke;
- UCT-ADU LepiMAP; Mlawula; 19/02/2016; Kate Braun; LepiMAP 588748



Eudocima phalonia (Linnaeus, 1763)
Afromoths: Prinsloo & Uys (2015)
(*Othreis fullonia*)



***Eudocima* sp.**

Project Noah (Photos by Pamela Sai)

- Project Noah; Mbuluzi Game Reserve; 27/03/2014; Pamela Sai; PN 224636004

Gnamptogyia diagonalis Hampson, 1910
Afromoths: Krüger (2015)

- AfroMoths; Mlawula; 29/12/1995; N J Duke; TMSA



Meliaba pelopsalis Walker, 1859
Afromoths: TMSA



Nagia gravipes Walker, 1858
Afromoths: Kühne (2010)

- AfroMoths; Bulunga Mountains; 24/06/1994; N J Duke; TMSA

Parafodina pentagonalis (Butler, 1894)
Afromoths: TMSA

- AfroMoths; Mlawula; 05/02/1995; N J Duke; TMSA

Pristanepa platti Hampson, 1926
Afromoths: TMSA

Raparna tritonias Hampson, 1902
Afromoths: TMSA



Tephrialia vausema Hampson, 1926
Afromoths: TMSA

- AfroMoths; Malolotja; 26/12/1997; N J Duke; TMSA

Erebidae: Erebiniae

Anomis flava (Fabricius, 1775)
Malolotja and Mlawula Checklists;
Afromoths: TMSA
(*Anomis auragoides*)

- UCT-ADU LepiMAP; Pine Valley; 17/03/2017; Kate Braun; LepiMAP 618152
- UCT-ADU LepiMAP; Pine Valley; 06/04/2017; Kate Braun; LepiMAP 620351
- UCT-ADU LepiMAP; Pine Valley; 03/04/2017; Kate Braun; LepiMAP 620130
- UCT-ADU LepiMAP; Pine Valley; 19/04/2017; Kate Braun; LepiMAP 621947
- UCT-ADU LepiMAP; Mlawula; 18/01/2017; Kate Braun; LepiMAP 612671
- UCT-ADU LepiMAP; Malolotja; 07/04/2018; Kate Braun; LepiMAP 645143
- AfroMoths; Malolotja; 04/02/1993; N J Duke;
- UCT-ADU LepiMAP; Pine Valley; 29/03/2017; Kate Braun; LepiMAP 619403
- UCT-ADU LepiMAP; Pine Valley; 29/03/2017; Kate Braun; LepiMAP 619363



Anomis leona (Schaus, 1893)
Malolotja and Mlawula Checklists
(*Gonitis leona*)



Anomis luperca Möschler, 1884
Afromoths: TMSA

Anomis sabulifera (Guenée, 1852)
Malolotja and Mlawula Checklists;
Afromoths: TMSA
(*Cosmophila sabulifera*, *Anomis sabulifera*)

- UCT-ADU LepiMAP; Pine Valley; 03/02/2017; Kate

- Braun; LepiMAP 614471
- UCT-ADU LepiMAP; Pine Valley; 29/03/2017; Kate Braun; LepiMAP 619361
- UCT-ADU LepiMAP; Pine Valley; 23/02/2017; Kate Braun; LepiMAP 616507
- UCT-ADU LepiMAP; Pine Valley; 20/02/2015; Kate Braun; LepiMAP 564029
- UCT-ADU LepiMAP; Mlawula; 18/01/2017; Kate Braun; LepiMAP 612774
- UCT-ADU LepiMAP; Mlawula; 18/01/2017; Kate Braun; LepiMAP 612756
- UCT-ADU LepiMAP; Mlawula; 18/01/2017; Kate Braun; LepiMAP 612755
- UCT-ADU LepiMAP; Mlawula; 18/01/2017; Kate Braun; LepiMAP 612626
- UCT-ADU LepiMAP; Mlawula; 18/01/2017; Kate Braun; LepiMAP 612789
- UCT-ADU LepiMAP; Pine Valley; 28/03/2017; Kate Braun; LepiMAP 619293



Anomis sp.

UCT-ADU LepiMap

- UCT-ADU LepiMAP; Pine Valley; 19/04/2017; Kate Braun; LepiMAP 621961
- UCT-ADU LepiMAP; Pine Valley; 13/03/2017; Kate Braun; LepiMAP 617826
- UCT-ADU LepiMAP; Pine Valley; 18/12/2017; Kate Braun; LepiMAP 636516
- UCT-ADU LepiMAP; Pine Valley; 21/03/2017; Kate Braun; LepiMAP 618672
- UCT-ADU LepiMAP; Pine Valley; 28/03/2017; Kate Braun; LepiMAP 619265
- UCT-ADU LepiMAP; Pine Valley; 29/03/2017; Kate Braun; LepiMAP 619368
- UCT-ADU LepiMAP; Pine Valley; 03/04/2017; Kate Braun; LepiMAP 620105
- UCT-ADU LepiMAP; Pine Valley; 18/04/2017; Kate Braun; LepiMAP 621811
- UCT-ADU LepiMAP; Pine Valley; 19/04/2017; Kate Braun; LepiMAP 621977
- UCT-ADU LepiMAP; Pine Valley; 26/04/2017; Kate Braun; LepiMAP 622884
- UCT-ADU LepiMAP; Pine Valley; 11/03/2017; Kate Braun; LepiMAP 617635
- UCT-ADU LepiMAP; Pine Valley; 04/04/2017; Kate Braun; LepiMAP 620226
- UCT-ADU LepiMAP; Mlawula; 18/01/2017; Kate Braun; LepiMAP 612775
- UCT-ADU LepiMAP; Pine Valley; 08/03/2017; Kate Braun; LepiMAP 617511
- UCT-ADU LepiMAP; Mlawula; 18/01/2017; Kate Braun; LepiMAP 612749
- UCT-ADU LepiMAP; Mlawula; 18/01/2017; Kate Braun; LepiMAP 612776
- UCT-ADU LepiMAP; Pine Valley; 26/02/2015; Kate Braun; LepiMAP 564367
- UCT-ADU LepiMAP; Pine Valley; 24/01/2017; Kate Braun; LepiMAP 613214
- UCT-ADU LepiMAP; Pine Valley; 30/01/2017; Kate Braun; LepiMAP 614082
- UCT-ADU LepiMAP; Pine Valley; 31/01/2017; Kate Braun; LepiMAP 614156
- UCT-ADU LepiMAP; Pine Valley; 03/02/2017; Kate Braun; LepiMAP 614475

- UCT-ADU LepiMAP; Pine Valley; 06/03/2017; Kate Braun; LepiMAP 617388
- UCT-ADU LepiMAP; Pine Valley; 04/02/2017; Kate Braun; LepiMAP 614614
- UCT-ADU LepiMAP; Pine Valley; 17/03/2017; Kate Braun; LepiMAP 618130
- UCT-ADU LepiMAP; Pine Valley; 29/01/2017; Kate Braun; LepiMAP 613931



Bastilla derogans (Walker, 1858)
Malolotja and Mlawula Checklists
(*Dysgonia derogans*)

- AfroMoths; Malagwane Hill; 04/07/1990; N J Duke;
- AfroMoths; Malagwane Hill; 06/04/1993; N J Duke;
- UCT-ADU LepiMAP; Mlawula; 28/12/2014; Kate Braun; LepiMAP 559320



Calesia xanthognatha Hampson, 1926
Malolotja and Mlawula Checklists



*

Calesia zambesita Walker, 1865
AfroMoths: Krüger (2016)



*

Caranilla angularis (Boisduval, 1833)
Malolotja and Mlawula Checklists
(*Dysgonia angularis*)

- UCT-ADU LepiMAP; Pine Valley; 01/02/2017; Kate Braun; LepiMAP 614244
- UCT-ADU LepiMAP; Pine Valley; 13/03/2017; Kate Braun; LepiMAP 617831
- UCT-ADU LepiMAP; Pine Valley; 18/04/2017; Kate Braun; LepiMAP 621841
- UCT-ADU LepiMAP; Pine Valley; 20/03/2017; Kate Braun; LepiMAP 618525
- UCT-ADU LepiMAP; Pine Valley; 07/02/2017; Kate Braun; LepiMAP 615041
- UCT-ADU LepiMAP; Pine Valley; 28/11/2016; Kate Braun; LepiMAP 610419
- AfroMoths; Malolotja; 04/02/1993; N J Duke;
- UCT-ADU LepiMAP; Pine Valley; 02/04/2016; Kate Braun; LepiMAP 592325
- UCT-ADU LepiMAP; Pine Valley; 29/03/2017; Kate Braun; LepiMAP 619373
- UCT-ADU LepiMAP; Mlawula; 27/12/2014; Kate Braun; LepiMAP 559310
- UCT-ADU LepiMAP; Pine Valley; 23/01/2017; Kate Braun; LepiMAP 613201



Cortya canescens Walker, 1858
UCT-ADU LepiMap Swaziland Species List
Nov 2016



*

Ctenusa pallida (Hampson, 1902)
Malolotja and Mlawula Checklists
(*Acantholipes rufirena*)

Dysgonia torrida (Guenée, 1852)

Malolotja and Mlawula Checklists

- UCT-ADU LepiMAP; Pine Valley; 06/04/2017; Kate Braun; LepiMAP 620349
- UCT-ADU LepiMAP; Pine Valley; 27/12/2017; Kate Braun; LepiMAP 637269
- UCT-ADU LepiMAP; Pine Valley; 04/02/2017; Kate Braun; LepiMAP 614682
- UCT-ADU LepiMAP; Mlawula; 19/01/2013; Kate Braun; LepiMAP 27834
- UCT-ADU LepiMAP; Mlawula; 19/01/2013; Kate Braun; LepiMAP 27830
- UCT-ADU LepiMAP; Mhlumeni; 13/10/2012; de Beer Len ; Jemma de Beer; LepiMAP 39007
- UCT-ADU LepiMAP; Mlawula; 18/01/2017; Kate Braun; LepiMAP 612791



Egybolis vaillantina (Stoll, 1790)

UCT-ADU LepiMAP

(*Egybolis vaillantina vaillantina*)

- UCT-ADU LepiMAP; Royal Jozini; 08/08/2015; Craig Christie ; LepiMAP 576265



Entomogramma pardus Guenée, 1852

Malolotja and Mlawula Checklists;

Afromoths: TMSA



Grammodes bifasciata (Petagna, 1787)

Malolotja and Mlawula Checklists;

Afromoths: TMSA

- UCT-ADU LepiMAP; Malolotja; 20/03/2010; Webb P.; LepiMAP 11933



Grammodes congenita Walker, 1858

Malolotja and Mlawula Checklists



Grammodes euclidioides Guenée, 1852

Malolotja and Mlawula Checklists;

Afromoths: TMSA



Grammodes exclusiva Pagenstecher, 1907

Malolotja and Mlawula Checklists;

Afromoths: TMSA

(*Prodotis exclusiva*)

- UCT-ADU LepiMAP; Mlawula; 25/03/2017; Kate Braun; LepiMAP 619111



Grammodes stolidia (Fabricius, 1775)

Malolotja and Mlawula Checklists;

Afromoths: TMSA

(*Prodotis stolidia*)

- UCT-ADU LepiMAP; Mlawula; 25/03/2017; Kate Braun; LepiMAP 619154
- UCT-ADU LepiMAP; Pine Valley; 20/10/2014; Kate Braun; LepiMAP 553902



Grammodes sp.

UCT-ADU LepiMap

- UCT-ADU LepiMAP; Pine Valley; 29/03/2017; Kate

Braun; LepiMAP 619388

- UCT-ADU LepiMAP; Pine Valley; 03/12/2016; Kate Braun; LepiMAP 610476



Heliophisma catocalina Holland, 1894

UCT-ADU LepiMap

- UCT-ADU LepiMAP; Pine Valley; 15/02/2017; Kate Braun; LepiMAP 615688



Heliophisma klugii (Boisduval, 1833)

Malolotja and Mlawula Checklists

- UCT-ADU LepiMAP; Pine Valley; 20/04/2017; Kate Braun; LepiMAP 622005
- UCT-ADU LepiMAP; Pine Valley; 18/03/2017; Kate Braun; LepiMAP 618324
- UCT-ADU LepiMAP; Pine Valley; 13/03/2018; Kate Braun; LepiMAP 642737
- UCT-ADU LepiMAP; Pine Valley; 19/03/2007; Kate Braun; LepiMAP 10785
- UCT-ADU LepiMAP; Pine Valley; 31/01/2013; Kate Braun; LepiMAP 28277
- UCT-ADU LepiMAP; Pine Valley; 10/02/2018; Kate Braun; LepiMAP 640595



Lacera alope (Cramer, 1780)

Malolotja and Mlawula Checklists



Lyncestis amphix (Cramer, 1777)

Malolotja and Mlawula Checklists;

Afromoths: Krüger (2015)

- AfroMoths; Mbabane; 20/01/1994; N J Duke; TMSA

Lyncestis knudlarseni Hacker & Fibiger,

2006

Afromoths: TMSA

Plecopterodes moderata (Wallengren,

1860)
Malolotja and Mlawula Checklists;
Afromoths: TMSA

- UCT-ADU LepiMAP; Mlawula; 20/04/2014; Kate Braun; LepiMAP 44770
- UCT-ADU LepiMAP; Mlawula; 18/01/2017; Kate Braun; LepiMAP 612781



Rhesala imparata????

Malolotja and Mlawula Checklists
(*Rhesala imparata*)

Stenopsis subdivisa ???

Malolotja and Mlawula Checklists
(*Stenopsis subdivisa*)

Tolna ambigua (Hampson, 1902)

Afromoths: TMSA

Tolna sypnoides (Butler, 1878)

UCT-ADU LepiMAP

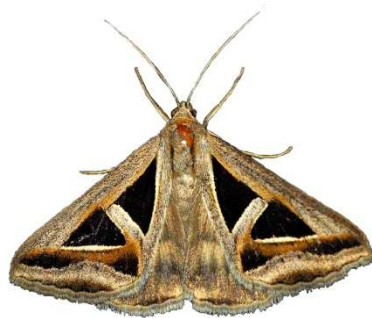
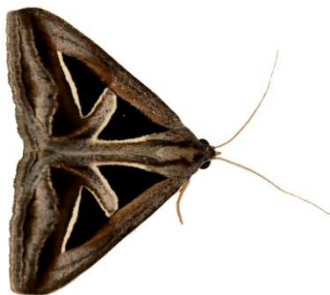
- UCT-ADU LepiMAP; Pine Valley; 12/05/2008; Kate Braun; LepiMAP 10786



Trigonodes exportata Guenée, 1852

UCT-ADU LepiMAP

- UCT-ADU LepiMAP; Malolotja; 20/03/2010; Webb P.; LepiMAP 11930
- UCT-ADU LepiMAP; Pine Valley; 03/04/2017; Kate Braun; LepiMAP 620110
- UCT-ADU LepiMAP; Pine Valley; 18/04/2017; Kate Braun; LepiMAP 621807



Trigonodes hyppasia (Cramer, 1779)

Malolotja and Mlawula Checklists;
Afromoths: TMSA



*

Tytroca phaeocyma Hampson, 1913

Afromoths: TMSA

(*Tytroca phaeocyma*)

Ugia amaponda (Felder & Rogenhofer, 1874)

Malolotja and Mlawula Checklists;
Afromoths: TMSA

Erebidae: Erebininae: Acantholipini

Acantholipes circumdata (Walker, 1858)

Afromoths: TMSA

Acantholipes trimeni Felder & Rogenhofer, 1874

Malolotja and Mlawula Checklists;
Afromoths: TMSA

- UCT-ADU LepiMAP; Mlawula; 24/03/2017; Kate Braun; LepiMAP 619049
- UCT-ADU LepiMAP; Pine Valley; 19/04/2017; Kate Braun; LepiMAP 621932
- UCT-ADU LepiMAP; Pine Valley; 19/04/2017; Kate Braun; LepiMAP 621934
- UCT-ADU LepiMAP; Pine Valley; 23/04/2017; Kate Braun; LepiMAP 622354
- UCT-ADU LepiMAP; Pine Valley; 23/04/2017; Kate Braun; LepiMAP 622382
- UCT-ADU LepiMAP; Pine Valley; 14/02/2018; Kate Braun; LepiMAP 640940



Erebidae: Erebininae: Audeini

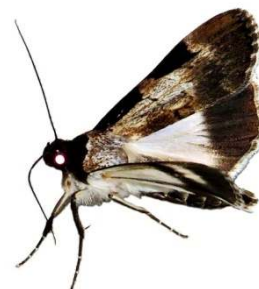
Audea bipunctata Walker, 1858

Afromoths: Kühne (2005)

Audea melanoplaga Hampson, 1902

UCT-ADU LepiMap

- UCT-ADU LepiMAP; Pine Valley; 25/04/2017; Kate Braun; LepiMAP 622613

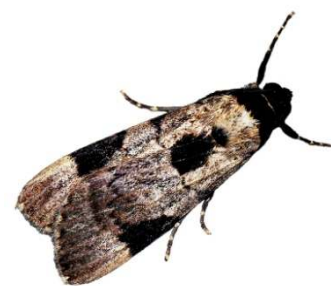


Audea nigrrior Kühne, 2005

Afromoths: Kühne (2005)

Audea tegulata Hampson, 1902

Malolotja and Mlawula Checklists
(*Davea humeralis*)



*

Audea zimmeri Berio, 1954

Afromoths: TMSA

- AfroMoths; Malagwane Hill; 20/01/1994; N J Duke;

Erebidae: Erebininae: Catocalini

Aburina poliophaea Hampson, 1926

Afromoths: TMSA

Aedia pallidisca (Hampson, 1926)

Afromoths: TMSA

Aedia virescens (Hampson, 1902)

Afromoths: TMSA

Archaeopilicornus lucidus (Pinhey, 1968)

Afromoths: TMSA

Catephia discophora Hampson, 1926

Afromoths: TMSA

(*Ecpatia discophora*)

Cuneisigna obstans (Walker, 1858)

Afromoths: Karisch (2013)



*

Ercheia subsignata (Walker, 1865)

Afromoths: TMSA

Hypanua xyлина (Distant, 1898)

Afromoths: TMSA



Hypotacha retracta retracta (Hampson, 1902)

Afromoths: TMSA

Lophotavia globulipes (Walker, 1865)

Afromoths: TMSA

- AfroMoths; Malagwane Hill; 24/01/1993; N J Duke;



Macaldenia palumbiodes (Hampson, 1902)

Afromoths: TMSA

(*Parallelura palumbiodes*)

- AfroMoths; Mbabane; 18/01/1992; N J Duke; TMSA

Parachalciope mahura (Felder R. &

Rogenhofer, 1875)

Afromoths: TMSA, UCT-ADU LepiMAP

- UCT-ADU LepiMAP; Lubombo Mountains, Jilobi; 28/01/2014; Kate Braun; LepiMAP 39702

Prionofrontia strigata Hampson, 1926

Afromoths: TMSA



Tyroca leucoptera (Hampson, 1896)

Afromoths: TMSA

- AfroMoths; Mpiisi; 07/12/1991; N J Duke; TMSA



Tyroca metaxantha (Hampson, 1902)

Afromoths: TMSA

Ulotrichopus catocala (Felder &

Rogenhofer, 1874)

Afromoths: Kühne (2005)

Ulotrichopus primulinus (Hampson, 1902)

Malolotja and Mlawula Checklists;

Afromoths: Janse (1960)

(*Audea primulina*)

- AfroMoths; Mbabane; 27/02/1990; N J Duke; TMSA

Ulotrichopus stertzi (Püngeler, 1907)

Malolotja and Mlawula Checklists

(*Aspidofrontia glaucescens*)

Ulotrichopus tinctipennis (Hampson, 1902)

Malolotja and Mlawula Checklists;

Afromoths: Agassiz & Bidzilya (2016)



Erebidae: Erebinæ: Erebinî

Cyligramma latona (Cramer, 1775)

Malolotja and Mlawula Checklists

- UCT-ADU LepiMAP; Pine Valley; 30/12/2016; Kate Braun; LepiMAP 611548
- UCT-ADU LepiMAP; Pine Valley; 31/01/2017; Kate Braun; LepiMAP 614222
- UCT-ADU LepiMAP; Pine Valley; 04/03/2012; Kate Braun; LepiMAP 22091
- UCT-ADU LepiMAP; Pine Valley; 01/02/2015; Kate Braun; LepiMAP 561554
- UCT-ADU LepiMAP; Mlawula; 25/03/2017; Kate Braun; LepiMAP 619130
- UCT-ADU LepiMAP; Mlawula; 27/11/2015; Kate Braun; LepiMAP 583504
- Project Noah; Mlawula; 04/04/2014; Pamela Sai; PN 265226075
- UCT-ADU LepiMAP; Pine Valley; 21/03/2017; Kate Braun; LepiMAP 618650
- UCT-ADU LepiMAP; Pine Valley; 18/12/2008; Kate Braun; LepiMAP 10782



Cyligramma sp.

UCT-ADU LepiMap

- UCT-ADU LepiMAP; Shewula; 01/03/2011; Paasikunnas Timo; LepiMAP 577547



Erebidae: Erebinæ: Euclidiini

Mocis conveniens (Walker, 1858)

Malolotja and Mlawula Checklists;

Afromoths: TMSA

(*Remigia conveniens*)

- UCT-ADU LepiMAP; Phophonyane; 05/02/2006; Roland H; LepiMAP 556584
- UCT-ADU LepiMAP; Mlawula; 02/04/2010; Kate Braun; LepiMAP 12292
- UCT-ADU LepiMAP; Mantenga; 28/03/2012; Kate Braun; LepiMAP 22427
- UCT-ADU LepiMAP; Mlawula; 19/01/2013; Kate Braun; LepiMAP 27828
- UCT-ADU LepiMAP; Pine Valley; 18/04/2014; Kate Braun; LepiMAP 44151
- UCT-ADU LepiMAP; Pine Valley; 03/04/2016; Kate Braun; LepiMAP 592337
- UCT-ADU LepiMAP; Pine Valley; 17/02/2017; Kate Braun; LepiMAP 615869
- UCT-ADU LepiMAP; Pine Valley; 18/03/2017; Kate Braun; LepiMAP 618309
- UCT-ADU LepiMAP; Pine Valley; 19/04/2017; Kate Braun; LepiMAP 621965
- UCT-ADU LepiMAP; Pine Valley; 22/04/2017; Kate Braun; LepiMAP 622319
- UCT-ADU LepiMAP; Pine Valley; 23/04/2017; Kate Braun; LepiMAP 622357
- UCT-ADU LepiMAP; Pine Valley; 09/04/2018; Kate Braun; LepiMAP 645329



Mocis mayeri (Boisduval, 1833)

Malolotja and Mlawula Checklists;

Afromoths: New record (T. Baron)

- AfroMoths; Malolotja; 28/04/1996; N J Duke;
- UCT-ADU LepiMAP; Pine Valley; 17/03/2017; Kate Braun; LepiMAP 618159
- UCT-ADU LepiMAP; Pine Valley; 28/04/2017; Kate Braun; LepiMAP 623545



Mocis mutuaria (Walker, 1858)

UCT-ADU LepiMap

- UCT-ADU LepiMAP; Malolotja; 20/03/2010; Webb P.; LepiMAP 11919
- UCT-ADU LepiMAP; Pine Valley; 25/02/2012; Kate Braun; LepiMAP 21754
- UCT-ADU LepiMAP; Pine Valley; 16/02/2013; Kate Braun; LepiMAP 28432
- UCT-ADU LepiMAP; Malolotja; 24/04/2014; Kate Braun; LepiMAP 44965
- UCT-ADU LepiMAP; Pine Valley; 02/04/2016; Kate Braun; LepiMAP 592322
- UCT-ADU LepiMAP; Pine Valley; 27/11/2016; Kate Braun; LepiMAP 609644
- UCT-ADU LepiMAP; Pine Valley; 20/03/2017; Kate Braun; LepiMAP 618527



Mocis proverai Zilli, 2000
Malolotja and Mlawula Checklists
(*Mocis frugalis*)

- UCT-ADU LepiMAP; Mlawula; 01/07/2017; Kate Braun; LepiMAP 629912



Erebidae: Erebininae: Hulodini

Ericeia congregata (Walker, 1858)
Afromoths: TMSA

- AfroMoths; Malolotja; 24/04/1995; N J Duke; TMSA

Ericeia congressa (Walker, 1858)
Afromoths: TMSA



Ericeia inangulata (Guenée, 1852)
Malolotja and Mlawula Checklists



Ericeia sobria Walker, 1858
Afromoths: TMSA, UCT-ADU LepiMap

- UCT-ADU LepiMAP; Pine Valley; 04/02/2017; Kate Braun; LepiMAP 614691

Braun; LepiMAP 614691



Erebidae: Erebininae: Hypopyrini

Cometaster pyrula (Hopffer, 1857)
UCT-ADU LepiMAP; Afromoths: Pinhey (1975)

- UCT-ADU LepiMAP; Nisela; 18/12/2008; Paasikunnas Timo; Alina Kallio; LepiMAP 555974
- UCT-ADU LepiMAP; Mlawula; 19/01/2013; Kate Braun; LepiMAP 27837
- Project Noah; Mlawula; 11/11/2013; Tina Petterson; PN 78096144
- UCT-ADU LepiMAP; Mlawula; 11/11/2013; deBeer Len deBeer; Jemma de Beer; LepiMAP 37348
- UCT-ADU LepiMAP; Mlawula; 21/10/2016; Kate Braun; LepiMAP 606516



Hypopyra africana (Kirby, 1896)
Afromoths: TMSA

- AfroMoths; Mlawula; 05/02/1995; N J Duke;



Hypopyra capensis Herrich-Schäffer, 1854
Malolotja and Mlawula Checklists;
Afromoths: TMSA

- UCT-ADU LepiMAP; Pine Valley; 28/03/2017; Kate Braun; LepiMAP 619306
- UCT-ADU LepiMAP; Mlawula; 19/01/2013; Kate Braun; LepiMAP 27839
- UCT-ADU LepiMAP; Pine Valley; 11/09/2017; Kate Braun; LepiMap 632034
- UCT-ADU LepiMAP; Pine Valley; 23/04/2017; Kate Braun; LepiMAP 622387
- UCT-ADU LepiMAP; Pine Valley; 12/04/2017; Kate Braun; LepiMAP 620828
- UCT-ADU LepiMAP; Pine Valley; 29/03/2017; Kate Braun; LepiMAP 619364
- UCT-ADU LepiMAP; Pine Valley; 08/03/2017; Kate Braun; LepiMAP 617516
- UCT-ADU LepiMAP; Pine Valley; 04/02/2017; Kate Braun; LepiMAP 614630
- UCT-ADU LepiMAP; Pine Valley; 19/04/2016; Kate Braun; LepiMAP 595083
- UCT-ADU LepiMAP; Phophonyane; 03/02/2006; Roland H; LepiMAP 556573
- UCT-ADU LepiMAP; Phophoyane; 23/01/2015; Maciver M; LepiMAP 561142



Erebidae: Erebininae: Ophiusini

Ophiusa dianaris (Guenée, 1852)
Malolotja and Mlawula Checklists

- UCT-ADU LepiMAP; Pine Valley; 01/01/2018; Kate Braun; LepiMAP 637799



Ophiusa finifascia (Walker, 1858)
Malolotja and Mlawula Checklists;
Afromoths: TMSA
(*Anua finifascia*)

- AfroMoths; Malagwane Hill; 18/03/1994; N J Duke;
- AfroMoths; Mbabane; 18/03/1994; N J Duke; TMSA

Ophiusa mejanesi (Guenée, 1852)
Malolotja and Mlawula Checklists;
Afromoths: TMSA
(*Ophiusa wahlbergi*)

- AfroMoths; Mbabane; 07/01/1995; N J Duke; TMSA
- UCT-ADU LepiMAP; Mlawula; 06/10/2018; Kate Braun; LepiMAP 659862



Ophiusa selenaris (Guenée, 1852)
Malolotja and Mlawula Checklists;
Afromoths: TMSA
(*Anua selanaris*)

- UCT-ADU LepiMAP; Pine Valley; 16/06/2018; Kate Braun; LepiMAP 642834
- UCT-ADU LepiMAP; Pine Valley; 09/10/2018; Kate Braun; LepiMAP 660114
- UCT-ADU LepiMAP; Pine Valley; 27/10/2018; Kate Braun; LepiMAP 660947





Ophiusa tirhaca (Cramer, 1777)
Malolotja and Mlawula Checklists
(*Ophiusa tirhaca obscura*)



Polydesma umbricola Boisduval, 1833
Malolotja and Mlawula Checklists;
Afromoths: TMSA
(*Trichopolydesma colutrix*)



Pericyma mendax (Walker, 1858)
UCT-ADU LepiMap; Afromoths: TMSA
• UCT-ADU LepiMAP; Pine Valley; 03/04/2017; Kate Braun; LepiMAP 620131
• UCT-ADU LepiMAP; Pine Valley; 09/04/2018; Kate Braun; LepiMAP 645310
• UCT-ADU LepiMAP; Pine Valley; 10/04/2008; Kate Braun; LepiMAP 646480
• UCT-ADU LepiMAP; Pine Valley; 02/12/2016; Kate Braun; LepiMAP 610465



Ophiusa violascens Hampson, 1902
Malolotja and Mlawula Checklists

Thyas rubricata (Holland, 1894)
Malolotja and Mlawula Checklists;
Afromoths: TMSA
(*Dermaleipa rubricata*)
• AfroMoths; 20/11/1995; N J Duke; TMSA



Spingomorpha chlorea (Cramer, 1777)
Malolotja and Mlawula Checklists
• UCT-ADU LepiMAP; Mbuluzi Game Reserve; 02/02/2006; Roland H; LepiMAP 556559
• Project Noah; Mlawula; 26/12/2013; Tina Petterson; PN 131206088
• UCT-ADU LepiMAP; Pine Valley; 08/02/2014; Kate Braun; LepiMAP 40025
• UCT-ADU LepiMAP; Pine Valley; 22/11/2014; Kate Braun; LepiMAP 559264
• UCT-ADU LepiMAP; Mlawula; 28/12/2014; Kate Braun; LepiMAP 559330
• UCT-ADU LepiMAP; Mlawula; 27/02/2015; Kate Braun; LepiMAP 564390
• UCT-ADU LepiMAP; Mlawula; 30/11/2015; Kate Braun; LepiMAP 583548
• UCT-ADU LepiMAP; Pine Valley; 30/12/2016; Kate Braun; LepiMAP 611546
• UCT-ADU LepiMAP; Mlawula; 03/01/2017; de Beer Len; Jemma de Beer; LepiMAP 612208
• UCT-ADU LepiMAP; Mlawula; 24/03/2017; Kate Braun; LepiMAP 619041
• UCT-ADU LepiMAP; Pine Valley; 19/10/2017; Kate Braun; LepiMAP 633338



Erebididae: Erebiniae: Poaphilini
Achaea catella Guenée, 1852
Malolotja and Mlawula Checklists;
Afromoths: TMSA
• UCT-ADU LepiMAP; Mlawula; 24/12/2015; Kate Braun; LepiMAP 586795



Erebididae: Erebiniae: Pandesmini
Heteropalpia corytoides (Berio, 1939)
Malolotja and Mlawula Checklists



Pandesma muricolor Berio, 1966
Afromoths: TMSA
• AfroMoths; Malolotja; 02/01/1995; N J Duke;
• AfroMoths; Malolotja; 02/01/1995; N J Duke; TMSA

Pandesma robusta (Walker, 1858)
Malolotja and Mlawula Checklists
(*Thria robusta*)
• UCT-ADU LepiMAP; Pine Valley; 31/01/2017; Kate Braun; LepiMAP 614154



Erebididae: Erebiniae: Pericymini
Pericyma atrifusa (Hampson, 1902)
Malolotja and Mlawula Checklists;
Afromoths: TMSA



Achaea determinata Prout A. E., 1921
UCT-ADU LepiMAP
• UCT-ADU LepiMAP; Pine Valley; 04/02/2017; Kate Braun; LepiMAP 614657



Achaea echo (Walker, 1858)
Malolotja and Mlawula Checklists;
Afromoths: TMSA



Achaea illustrata Walker, 1858

Afromoths: TMSA

- AfroMoths; Mkhomazane; 26/12/1997; N J Duke;

Achaea indeterminata (Walker, 1865)

Malolotja and Mlawula Checklists;

Afromoths: TMSA

Achaea klugii (Boisduval, 1833)

Afromoths: TMSA

- AfroMoths; Malagwane Hill; 10/01/1993; N J Duke;

Achaea lienardi (Boisduval, 1833)

Malolotja and Mlawula Checklists;

Afromoths: TMSA

- UCT-ADU LepiMAP; Mlawula; 03/03/2014; Kate Braun; LepiMAP 41076

- UCT-ADU LepiMAP; Mlawula; 23/04/2016; Kate Braun; LepiMAP 595096

- UCT-ADU LepiMAP; Mlawula; 23/04/2016; Kate Braun; LepiMAP 595117



Achaea mercatoria (Saalmüller, 1891)

Malolotja and Mlawula Checklists

Achaea praestans Guenée, 1852

Malolotja and Mlawula Checklists;

Afromoths: TMSA

- AfroMoths; Malolotja; 02/01/1995; N J Duke;



Achaea sordida (Geyer, 1837)

Malolotja and Mlawula Checklists;

Afromoths: TMSA



*

Achaea trapezoides (Guenée, 1862)

Afromoths: TMSA



Achaea violaceofascia (Saalmüller, 1891)

Afromoths: TMSA

Achaea violascens Hampson, 1918

Malolotja and Mlawula Checklists

Chalciopse delta (Boisduval, 1833)

Malolotja and Mlawula Checklists;

Afromoths: TMSA

- UCT-ADU LepiMAP; Mlawula; 21/03/2014; Kate Braun; LepiMAP 42046

- UCT-ADU LepiMAP; Mlawula; 28/02/2015; Kate Braun; LepiMAP 564402



*

Erebidae: Eulepidotinae

Anticarsia rubricans (Boisduval, 1833)

Afromoths: Kühne (2005)

(*Anticarsia irrorata*)

- UCT-ADU LepiMAP; Pine Valley; 10/01/2019; Kate Braun; LepiMAP 668556



Erebidae: Herminiinae

Hipoepa fractalis (Guenée, 1854)

Malolotja and Mlawula Checklists

Naarda leucopis Hampson, 1902

Malolotja and Mlawula Checklists

(*Gynaephila leucopis*)

Erebidae: Hypeninae

Dichromia erastrialis (Walker, 1866)

Malolotja and Mlawula Checklists

(*Hypaena erastrialis*)

Hydrillodes uliginosalis Guenée, 1854

Malolotja and Mlawula Checklists

(*Olybama uliginosalis*, *Dichromia cleobisalis*)

- UCT-ADU LepiMAP; Pine Valley; 02/05/2018; Kate Braun; LepiMAP 647100

- UCT-ADU LepiMAP; Pine Valley; 14/04/2017; Kate Braun; LepiMAP 621145

- UCT-ADU LepiMAP; Pine Valley; 21/04/2017; Kate Braun; LepiMAP 622053

- UCT-ADU LepiMAP; Pine Valley; 28/01/2018; Kate Braun; LepiMAP 639974

- UCT-ADU LepiMAP; Pine Valley; 09/04/2018; Kate Braun; LepiMAP 645328

- UCT-ADU LepiMAP; Pine Valley; 19/04/2017; Kate Braun; LepiMAP 621940

- UCT-ADU LepiMAP; Pine Valley; 01/02/2017; Kate Braun; LepiMAP 614253



Hypena abyssinialis Guenée, 1854

Malolotja and Mlawula Checklists

(*Hypaena abyssinialis*)

Hypena conscitalis Walker, 1866

Malolotja and Mlawula Checklists

(*Hypena strigata*)

Hypena fuscualis Saalmüller, 1891

Malolotja and Mlawula Checklists

(*Hypaena fuscualis*)

Hypena laetalimaior Lödl, 1995

UCT-ADU LepiMAP

- UCT-ADU LepiMAP; Pine Valley; 14/01/2018; Kate Braun; LepiMAP 639149



- UCT-ADU LepiMAP; Pine Valley; 16/01/2018; Kate Braun; LepiMAP 639431

Hypena laetalis Walker, 1859

UCT-ADU LepiMAP

- UCT-ADU LepiMAP; Hlane; 08/07/2014; de Beer Len; LepiMAP 49374

- UCT-ADU LepiMAP; Pine Valley; 18/04/2017; Kate Braun; LepiMAP 621813

Hypena laceratalis Walker, 1859

UCT-ADU LepiMAP

- UCT-ADU LepiMAP; Pine Valley; 06/01/2019; Kate Braun; LepiMAP 668044



Hypena lividalis (Hübner, 1790)

- UCT-ADU LepiMAP; Pine Valley; 24/01/2017; Kate Braun; LepiMAP 613218
- UCT-ADU LepiMAP; Pine Valley; 19/04/2017; Kate Braun; LepiMAP 621956



Hypena obacerralis Walker, 1859

UCT-ADU LepiMAP

- UCT-ADU LepiMAP; Pine Valley; 17/03/2017; Kate Braun; LepiMAP 618137
- UCT-ADU LepiMAP; Pine Valley; 20/03/2017; Kate Braun; LepiMAP 618628
- UCT-ADU LepiMAP; Pine Valley; 09/02/2018; Kate Braun; LepiMAP 640524



Hypena puncticosta Prout A. E., 1925

UCT-ADU LepiMAP

- UCT-ADU LepiMAP; Pine Valley; 02/10/2018; Kate Braun; LepiMAP 659387

Hypena senialis Guenée, 1854

Malolotja and Mlawula Checklists
(*Hypaena potamistris*)

- UCT-ADU LepiMAP; Pine Valley; 03/01/19; Kate Braun; LepiMAP 667756



Hypena strigatus (Fabricius, 1798)

UCT-ADU LepiMAP

- UCT-ADU LepiMAP; Pine Valley; 05/01/2017; Kate Braun; LepiMAP 612088
- UCT-ADU LepiMAP; Pine Valley; 28/04/2017; Kate Braun; LepiMAP 623539



Rhynchina obliqualis (Kollar, 1844)

Malolotja and Mlawula Checklists

(*Hypaena obliqualis*, *Hypaena masurialis*)

Rhynchina poecilopa (Vári, 1962)

UCT-ADU LepiMAP

(*Zekelita poecilopa*)

- UCT-ADU LepiMAP; Pine Valley; 23/04/2017; Kate Braun; LepiMAP 622379



Rhynchina tinctalis (Zeller, 1852)

UCT-ADU LepiMAP

(*Hypena tinctalis*, *Zekelita tinctalis*)

- UCT-ADU LepiMAP; Pine Valley; 09/12/2017; Kate Braun; LepiMAP 635783
- UCT-ADU LepiMAP; Pine Valley; 11/02/2017; Kate Braun; LepiMAP 615296
- UCT-ADU LepiMAP; Pine Valley; 29/11/2016; Kate Braun; LepiMAP 610432
- UCT-ADU LepiMAP; Pine Valley; 16/03/2017; Kate Braun; LepiMAP 618078



Rhynchodontodes antistropha (Vári, 1962)

UCT-ADU LepiMAP

(*Zekelita antistropha*)

- UCT-ADU LepiMAP; Pine Valley; 09/02/2018; Kate Braun; LepiMAP 640526
- UCT-ADU LepiMAP; Pine Valley; 05/03/2018; Kate Braun; LepiMAP 642565
- UCT-ADU LepiMAP; Pine Valley; 04/04/2017; Kate Braun; LepiMAP 620242



Sarmatia interitalis Guenée, 1854

UCT-ADU LepiMAP

- UCT-ADU LepiMAP; Pine Valley; 21/04/2017; Kate Braun; LepiMAP 622058



Tetracme truncataria (Walker, 1861)
Malolotja and Mlawula Checklists

Erebidae: Hypocalinae

Hypocala deflorata (Fabricius, 1794)
Malolotja and Mlawula Checklists

- UCT-ADU LepiMAP; Malolotja; 07/04/2018; Kate Braun; LepiMAP 645125
- UCT-ADU LepiMAP; Mlawula; 18/01/2017; Kate Braun; LepiMAP 612804



Hypocala plumicomis Guenée, 1852
UCT-ADU LepiMAP

- UCT-ADU LepiMAP; Pine Valley; 25/04/2017; Kate Braun; LepiMAP 622624
- UCT-ADU LepiMAP; Pine Valley; 27/12/2017; Kate Braun; LepiMAP 637286
- UCT-ADU LepiMAP; Pine Valley; 02/10/2018; Kate Braun; LepiMAP 659399



Erebidae: Lymantriinae

(not identified)

iNaturalist

- iNaturalist; Pine Valley; 02/01/2006; Kate Braun; iNaturalist 11076045

Aroa discalis Walker, 1855

Malolotja and Mlawula Checklists

- UCT-ADU LepiMAP; Mlawula; 21/03/2014; Kate Braun; LepiMAP 42056
- UCT-ADU LepiMAP; Pine Valley; 30/12/2016; Kate Braun; LepiMAP 611538



Bicelluphora argentea Hampson, 1905
Malolotja and Mlawula Checklists
(*Bicellulophora argentea*)

Bracharoa quadripunctata (Wallengren, 1875)

Malolotja and Mlawula Checklists

- UCT-ADU LepiMAP; Pine Valley; 23/01/2017; Kate Braun; LepiMAP 613202



Creagra liturata (Guérin-Ménéville, 1844)
Malolotja and Mlawula Checklists



Cropera testacea Walker, 1855
Afromoths: TMSA

Corema adspersa (Herrich-Schäffer, 1854)
Malolotja and Mlawula Checklists

Corema setinoides (Holland, 1893)
UCT-ADU LepiMAP

- UCT-ADU LepiMAP; Pine Valley; 23/02/2015; Kate Braun; LepiMAP 564031
- UCT-ADU LepiMAP; Pine Valley; 17/02/2017; Kate Braun; LepiMAP 615776



Dasychira daphne (Hering, 1926)
Malolotja and Mlawula Checklists
(*Laelia daphne*)

Euproctis bicolor Janse, 1915
Malolotja and Mlawula Checklists

Euproctis dewitzi (Grünberg, 1907)
Malolotja and Mlawula Checklists



Euproctis sanguigutta sanguigutta

Hampson, 1905

UCT-ADU LepiMap Swaziland Species List
Nov 2016

- UCT-ADU LepiMAP; Phophonyane; 03/02/2006; Roland H; LepiMAP 556571



Euproctis terminalis (Walker, 1855)
Malolotja and Mlawula Checklists;
Afromoths: Krüger (2015)

Knappetra fasciata fasciata (Walker, 1855)
Malolotja and Mlawula Checklists
(*Knappetra fasciata*)

- UCT-ADU LepiMAP; Mlawula; 18/01/2017; Kate Braun; LepiMAP 612649
- UCT-ADU LepiMAP; Mlawula; 18/01/2017; Kate Braun; LepiMAP 612747
- UCT-ADU LepiMAP; Mlawula; 20/12/2013; de Beer Len; LepiMAP 39331
- UCT-ADU LepiMAP; Mlawula; 19/01/2017; Kate Braun; LepiMAP 612812



Lacipa gemmata Distant, 1897
UCT-ADU LepiMAP

- UCT-ADU LepiMAP; Pine Valley; 09/10/2017; Kate Braun; LepiMap 632609



Lacipa nobilis nobilis (Herrich-Schäffer, 1855)
Malolotja and Mlawula Checklists

(Lacipa nobilis)



*

Laelia curvirogata Karsch, 1895
Malolotja and Mlawula Checklists

Laelia extatura (Distant, 1897)
Malolotja and Mlawula Checklists
(Dasychira extatura)



*

Laelia extorta (Distant, 1897)
UCT-ADU LepiMap Swaziland Species List
Nov 2016

- UCT-ADU LepiMAP; Pine Valley; 06/03/2017; Kate Braun; LepiMAP 617382
- UCT-ADU LepiMAP; Pine Valley; 23/02/2017; Kate Braun; LepiMAP 616502
- UCT-ADU LepiMAP; Pine Valley; 02/10/2018; Kate Braun; LepiMAP 659376
- UCT-ADU LepiMAP; Pine Valley; 11/10/2018; Kate Braun; LepiMAP 660291
- UCT-ADU LepiMAP; Pine Valley; 15/02/2017; Kate Braun; LepiMAP 615677
- UCT-ADU LepiMAP; Pine Valley; 11/02/2017; Kate Braun; LepiMAP 615285
- UCT-ADU LepiMAP; Phophonyane; 03/02/2006; Roland H; LepiMAP 556566
- UCT-ADU LepiMAP; Pine Valley; 02/10/2018; Kate Braun; LepiMAP 659379
- UCT-ADU LepiMAP; Pine Valley; 17/02/2017; Kate Braun; LepiMAP 615831



Laelia figlina Distant, 1899
UCT-ADU LepiMap

- UCT-ADU LepiMAP; Pine Valley; 10/01/2019; Kate Braun; LepiMAP 668539



Laelia fracta Schaus & Clements, 1893
Malolotja and Mlawula Checklists

Laelia herbida (Walker, 1856)
UCT-ADU LepiMap

- UCT-ADU LepiMAP; Pine Valley; 31/12/2017; Kate Braun; LepiMAP 667024



Laelia octophora (Hampson, 1905)
UCT-ADU LepiMap
(Dasychira octophora)

- UCT-ADU LepiMAP; Pine Valley; 29/03/2017; Kate Braun; LepiMAP 619354



Laelia pyrosoma (Hampson, 1910)
Malolotja and Mlawula Checklists

Laelia rosea Schaus, 1893
UCT-ADU LepiMap

- UCT-ADU LepiMAP; Pine Valley; 13/08/2017; Kate Braun; LepiMAP 630037



Laelia subrosea (Walker, 1855)
UCT-ADU LepiMap

- UCT-ADU LepiMAP; Pine Valley; 20/04/2017; Kate Braun; LepiMAP 622008



Morasa modesta Walker, 1855
Malolotja and Mlawula Checklists

- UCT-ADU LepiMAP; Pine Valley; 13/04/2014; Kate Braun; LepiMAP 44070
- UCT-ADU LepiMAP; Pine Valley; 17/03/2017; Kate Braun; LepiMAP 618129
- Project Noah; Mlawula; 06/03/2014; Tina Petterson; PN 198836009



Naroma varipes (Walker, 1865)
Malolotja and Mlawula Checklists;
Afro-moths: TMSA

- UCT-ADU LepiMAP; Pine Valley; 21/03/2017; Kate Braun; LepiMAP 618663
- UCT-ADU LepiMAP; Pine Valley; 19/04/2017; Kate Braun; LepiMAP 621928
- UCT-ADU LepiMAP; Pine Valley; 22/05/2017; Kate Braun; LepiMAP 626410
- UCT-ADU LepiMAP; Pine Valley; 04/04/2018; Kate Braun; LepiMAP 644854
- UCT-ADU LepiMAP; Pine Valley; 21/04/2015; Kate Braun; LepiMAP 569787
- UCT-ADU LepiMAP; Phophonyane; 03/02/2006; Roland H; LepiMAP 556570



Palasea albimacula albimacula
Wallengren, 1863
UCT-ADU LepiMap

- UCT-ADU LepiMAP; Phophonyane; 03/02/2006; Roland H; LepiMAP 556572
- UCT-ADU LepiMAP; Mlawula; 18/01/2017; Kate Braun; LepiMAP 612637
- UCT-ADU LepiMAP; Mlawula; 18/01/2017; Kate Braun; LepiMAP 612779



Paraproctis chionopeza Collenette, 1954
UCT-ADU LepiMap

- UCT-ADU LepiMAP; Pine Valley; 18/11/2018; Kate Braun; LepiMAP 663285

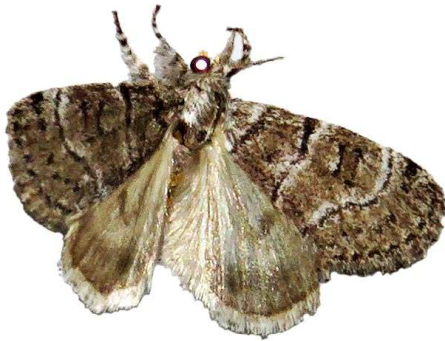


Psalis africana Kiriakoff, 1956
Malolotja and Mlawula Checklists



Salvatgea xanthosoma (Hampson, 1910)
UCT-ADU LepiMap
(*Lymantriades xanthosoma*)

- UCT-ADU LepiMAP; Pine Valley; 04/04/2017; Kate Braun; LepiMAP 620231
- UCT-ADU LepiMAP; Pine Valley; 15/08/2017; Kate Braun; LepiMAP 630259



Erebidae: Pangraptinae

Gracilodes caffra Guenée, 1852
Malolotja and Mlawula Checklists;
Afromoths: TMSA

- UCT-ADU LepiMAP; Pine Valley; 15/02/2017; Kate Braun; LepiMAP 615680
- UCT-ADU LepiMAP; Pine Valley; 02/05/2017; Kate Braun; LepiMAP 626396
- UCT-ADU LepiMAP; Pine Valley; 21/04/2017; Kate Braun; LepiMAP 622057



Gracilodes nysa Guenée, 1852
UCT-ADU LepiMap

- UCT-ADU LepiMAP; Mlawula; 19/01/2017; Kate Braun; LepiMAP 612809



Erebidae: Toxicampinae

Lygephila salax (Guenée, 1852)
Afromoths: Hacker & Fibiger (2006)



Tathorhynchus exsiccatus (Lederer, 1855)
Malolotja and Mlawula Checklists;
Afromoths: TMSA



Tathorhynchus plumbea (Distant, 1898)
Malolotja and Mlawula Checklists;
Afromoths: TMSA



Euteliidae: Euteliinae

Eutelia adulatrix (Hübner, 1813)
Malolotja and Mlawula Checklists



Eutelia amatrrix Walker, 1858
Malolotja and Mlawula Checklists



Eutelia blandiatrrix Guenée, 1852
Malolotja and Mlawula Checklists



Eutelia callichroma Distant, 1901
UCT-ADU LepiMap
• UCT-ADU LepiMAP; PhophonyNW; 13/12/2018; Kate Braun; LepiMAP 665193



Eutelia catephioides (Guenée, 1852)
Malolotja and Mlawula Checklists
(*Phlegetonia catephioides*)

Eutelia gilvicolor Mabilie, 1900
Malolotja and Mlawula Checklists

Eutelia polychorda Hampson, 1902
Malolotja and Mlawula Checklists



Eutelia subrubens (Mabilie, 1890)
Malolotja and Mlawula Checklists



Eutelia sp.
UCT-ADU LepiMap
• UCT-ADU LepiMAP; Mlawula; 11/11/2013; de Beer Len ; Jemma de Beer; LepiMAP 39213



- UCT-ADU LepiMAP; Pine Valley; 29/01/2017; Kate Braun; LepiMAP 613917



Marathyssa cuneata (Saalmüller, 1891)
Malolotja and Mlawula Checklists



Noctuidae: Acontiinae

Acontia caffraria caffraria (Cramer, 1777)
Malolotja and Mlawula Checklists
(*Acontia caffraria*)

- UCT-ADU LepiMAP; Pine Valley; 31/12/2018; Kate Braun; LepiMAP 667019



Acontia citripennis (Hampson, 1910)
Malolotja and Mlawula Checklists



Acontia conifrons Aurivillius, 1879
UCT-ADU LepiMAP

- UCT-ADU LepiMAP; Mlawula; 18/01/2017; Kate Braun; LepiMAP 612797

- UCT-ADU LepiMAP; Mlawula; 18/01/2017; Kate Braun; LepiMAP 612803
- UCT-ADU LepiMAP; Mlawula; 05/01/2018; Kate Braun; LepiMAP 638886



Acontia discoidea Hopffer, 1857
UCT-ADU LepiMap

- UCT-ADU LepiMAP; Pine Valley; 13/11/2017; Kate Braun; LepiMAP 634803



Acontia ectorrida (Hampson, 1916)
UCT-ADU LepiMAP

- UCT-ADU LepiMAP; Mlawula; 19/01/2017; Kate Braun; LepiMAP 612920



Acontia gratiosa Wallengren, 1856
Malolotja and Mlawula Checklists
(*Cardiosace olivescens*, *Acontia zelleri*)



Acontia guttifera guttifera Felder & Rogenhofer, 1874
Malolotja and Mlawula Checklists
(*Acontia guttifera*)

- UCT-ADU LepiMAP; Mlawula; 11/11/2013; de Beer Len ; Jemma de Beer; LepiMAP 37546
- UCT-ADU LepiMAP; Mlawula; 22/10/2016; Kate Braun; LepiMAP 606522
- UCT-ADU LepiMAP; Pine Valley; 17/02/2017; Kate Braun; LepiMAP 615926
- UCT-ADU LepiMAP; Pine Valley; 17/02/2017; Kate Braun; LepiMAP 615940



Acontia imitatrix Wallengren, 1856
UCT-ADU LepiMAP

- UCT-ADU LepiMAP; Pine Valley; 18/03/2017; Kate Braun; LepiMAP 618313
- UCT-ADU LepiMAP; Mlawula; 27/02/2015; Kate Braun; LepiMAP 564392
- UCT-ADU LepiMAP; Mlawula; 23/03/2017; Kate Braun; LepiMAP 619001



Acontia insocia (Walker, 1858)
Malolotja and Mlawula Checklists
(*Metapioplasta insocia*)

Acontia melaphora (Hampson, 1910)
UCT-ADU LepiMAP

- UCT-ADU LepiMAP; Mlawula; 05/01/2018; Kate Braun; LepiMAP 638910



Acontia natalis natalis Guenée, 1852
UCT-ADU LepiMAP
(*Cardiosace natalis*)

- UCT-ADU LepiMAP; Pine Valley; 10/10/2017; Kate Braun; LepiMap 632731
- UCT-ADU LepiMAP; Pine Valley; 09/11/2017; Kate Braun; LepiMAP 634503
- UCT-ADU LepiMAP; Mlawula; 02/03/2014; Kate Braun; LepiMAP 41061



Acontia porphyrea (Butler, 1898)
UCT-ADU LepiMap

Acontia transfigurata transfigurata
Wallengren, 1856
UCT-ADU LepiMap
(*Acontia transfigurata*)

- UCT-ADU LepiMAP; Pine Valley; 03/12/2012; Kate Braun; LepiMAP 26758
- UCT-ADU LepiMAP; Pine Valley; 19/01/2018; Kate Braun; LepiMAP 639472
- UCT-ADU LepiMAP; Pine Valley; 25/02/2017; Kate Braun; LepiMAP 639472

- Braun; LepiMAP 617102
- UCT-ADU LepiMAP; Pine Valley; 17/02/2017; Kate Braun; LepiMAP 615953
- UCT-ADU LepiMAP; Pine Valley; 18/03/2018; Kate Braun; LepiMAP 643152
- UCT-ADU LepiMAP; Mlawula; 24/03/2017; Kate Braun; LepiMAP 619040
- UCT-ADU LepiMAP; Mlawula; 20/10/2016; Kate Braun; LepiMAP 606511
- UCT-ADU LepiMAP; Mlawula; 04/01/2018; Kate Braun; LepiMAP 638827
- UCT-ADU LepiMAP; Mlawula; 30/12/2014; Kate Braun; LepiMAP 559347
- UCT-ADU LepiMAP; Pine Valley; 16/02/2017; Kate Braun; LepiMAP 615734
- UCT-ADU LepiMAP; Pine Valley; 02/11/2015; Kate Braun; LepiMAP 582311



Acontia triphaeniodes Wallengren, 1865
Malotlja and Mlawula Checklists
(*Cardiosace triphaeniodes*)

***Acontia* sp.?**

- UCT-ADU LepiMap
- UCT-ADU LepiMAP; Mlawula; 11/11/2013; de Beer Len; Jemma de Beer; LepiMAP 39212

Noctuidae: *Acronictinae*

Acronicta transvalica Hampson, 1911
Malotlja and Mlawula Checklists;
Afromoths: Haggis (1986)



*

Noctuidae: *Agaristinae*

Aegocera tricolora Bethune-Baker, 1909
Project Noah (Photos by Tina Petterson)

- Project Noah; Mlawula; 11/11/2013; Tina Petterson; PN 82106061



Aegoceropsis fervida (Walker, 1854)
Malotlja and Mlawula Checklists

- UCT-ADU LepiMAP; Malotlja; 16/11/2011; Kate Braun; LepiMAP 44075



Agoma trimenii (Felder R., 1874)
UCT-ADU LepiMap

- UCT-ADU LepiMAP; Mlawula; 11/11/2013; deBeer Len deBeer; Jemma de Beer; LepiMAP 37349



Brephos festiva (Jordan, 1913)
Malotlja and Mlawula Checklists



*

Heraclia africana (Butler, 1875)
Malotlja and Mlawula Checklists

- UCT-ADU LepiMAP; Mlawula; 09/11/2014; Kate Braun; LepiMAP 555184



*

Heraclia superba (Butler, 1875)
UCT-ADU LepiMap

- UCT-ADU LepiMAP; Mlawula; 27/10/2011; Kate Braun; LepiMAP 20385
- UCT-ADU LepiMAP; Mlawula; 08/11/2014; Kate Braun; LepiMAP 555180



Ovios capensis (Herrich-Schäffer, 1854)
Malotlja and Mlawula Checklists

- Project Noah; Mlawula; 11/11/2013; Tina Petterson; PN 69796121



Sommeria culta Hübner, 1831
Malotlja and Mlawula Checklists

- UCT-ADU LepiMAP; Mlawula; 18/01/2017; Kate Braun; LepiMAP 612763



Sommeria strabonis (Hampson, 1910)
Malotlja and Mlawula Checklists
(*Digama strabonis*)



*

Noctuidae: Bagisarinae

Amyna axis Guenée, 1852
Malolotja and Mlawula Checklists
(*Ilattia octo*, *Amyna octo*)

- UCT-ADU LepiMAP; Pine Valley; 15/02/2017; Kate Braun; LepiMAP 615664
- UCT-ADU LepiMAP; Pine Valley; 17/02/2017; Kate Braun; LepiMAP 615857
- UCT-ADU LepiMAP; Mlawula; 23/03/2017; Kate Braun; LepiMAP 618999
- UCT-ADU LepiMAP; Mlawula; 23/03/2017; Kate Braun; LepiMAP 619022



Amyna natalica Strand, 1917
Malolotja and Mlawula Checklists

Amyna punctum (Fabricius, 1794)
Malolotja and Mlawula Checklists

- UCT-ADU LepiMAP; Mlawula; 18/01/2017; Kate Braun; LepiMAP 612623
- UCT-ADU LepiMAP; Mlawula; 18/01/2017; Kate Braun; LepiMAP 612770
- UCT-ADU LepiMAP; Pine Valley; 17/02/2017; Kate Braun; LepiMAP 615828



Amyna sp.

- UCT-ADU LepiMAP; Pine Valley; 17/02/2017; Kate Braun; LepiMAP 615889
- UCT-ADU LepiMAP; Pine Valley; 17/02/2017; Kate Braun; LepiMAP 615864
- UCT-ADU LepiMAP; Pine Valley; 17/02/2017; Kate Braun; LepiMAP 615863
- UCT-ADU LepiMAP; Pine Valley; 17/02/2017; Kate Braun; LepiMAP 615829

Chasmina tibialis (Fabricius, 1775)

- UCT-ADU LepiMAP; Mlawula; 18/01/2017; Kate Braun; LepiMAP 612777
- UCT-ADU LepiMAP; Mlawula; 18/01/2017; Kate Braun; LepiMAP 612799
- UCT-ADU LepiMAP; Pine Valley; 18/03/2017; Kate Braun; LepiMAP 618314



Oglaea arcuata (Fabricius, 1787)

- UCT-ADU LepiMAP; Mlawula; 04/01/2018; Kate Braun; LepiMAP 638819
- UCT-ADU LepiMAP; Mlawula; 06/10/2018; Kate Braun; LepiMAP 659876



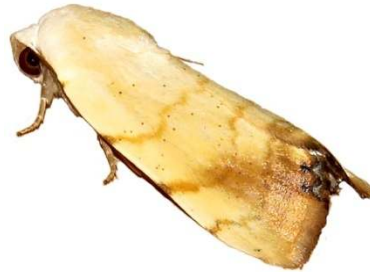
Oglaea nana (Walker, 1869)

- UCT-ADU LepiMAP; Mlawula; 25/03/2017; Kate Braun; LepiMAP 619161



Xanthodes albago (Fabricius, 1794)

- UCT-ADU LepiMAP; Pine Valley; 17/02/2017; Kate Braun; LepiMAP 615901
- UCT-ADU LepiMAP; Mlawula; 18/01/2017; Kate Braun; LepiMAP 612794
- UCT-ADU LepiMAP; Mlawula; 18/01/2017; Kate Braun; LepiMAP 612748



Xanthodes brunnescens (Pinhey, 1968)

Malolotja and Mlawula Checklists
(*Lophotidia brunnescens*)

Noctuidae: Blenininae

- ***Blenina quadripuncta*** Hampson, 1902
Malolotja and Mlawula Checklists
- UCT-ADU LepiMAP; Pine Valley; 09/10/2018; Kate Braun; LepiMAP 660125

Blenina squamifera (Wallengren, 1860)
Malolotja and Mlawula Checklists

- UCT-ADU LepiMAP; Pine Valley; 01/01/2010; Kate Braun; LepiMAP 10907
- UCT-ADU LepiMAP; Pine Valley; 25/02/2017; Kate Braun; LepiMAP 617096
- UCT-ADU LepiMAP; Pine Valley; 20/04/2017; Kate Braun; LepiMAP 621995
- UCT-ADU LepiMAP; Pine Valley; 13/08/2017; Kate Braun; LepiMAP 630029
- UCT-ADU LepiMAP; Pine Valley; 25/09/2017; Kate Braun; LepiMAP 632259
- UCT-ADU LepiMAP; Pine Valley; 27/02/2018; Kate Braun; LepiMAP 641583
- UCT-ADU LepiMAP; Pine Valley; 14/03/2018; Kate Braun; LepiMAP 642809
- UCT-ADU LepiMAP; Pine Valley; 29/09/2018; Kate Braun; LepiMAP 658917



Noctuidae: Condicinae

Condica capensis (Guenée, 1852)
Malolotja and Mlawula Checklists
(*Perigea capensis*)

- UCT-ADU LepiMAP; Pine Valley; 17/02/2017; Kate Braun; LepiMAP 615865
- UCT-ADU LepiMAP; Pine Valley; 03/04/2017; Kate Braun; LepiMAP 620113
- UCT-ADU LepiMAP; Pine Valley; 19/04/2017; Kate Braun; LepiMAP 621987
- UCT-ADU LepiMAP; Pine Valley; 10/10/2017; Kate Braun; LepiMAP 632724
- UCT-ADU LepiMAP; Pine Valley; 05/05/2018; Kate Braun; LepiMAP 647711
- UCT-ADU LepiMAP; Pine Valley; 05/05/2018; Kate Braun; LepiMAP 647708



Hadjina carcaroda (Distant, 1901)
Malolotja and Mlawula Checklists

Noctuidae: Cucullinae

- ***Cucullia chrygota*** Hampson, 1902
UCT-ADU LepiMAP
- UCT-ADU LepiMAP; Pine Valley; 30/11/2018; Kate Braun; LepiMAP 663694



Cucullia consimilis Felder & Rogenhofer, 1874
Malolotja and Mlawula Checklists

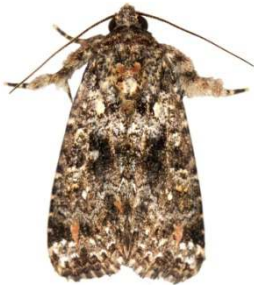


Cucullia terensis Felder & Rogenhofer, 1874
Malolotja and Mlawula Checklists

Eumichtis rubrimixta Hampson, 1906
Malolotja and Mlawula Checklists

Noctuidae: Eriopyrinae

Callopietria latreillei (Duponchel, 1827)
Malolotja and Mlawula Checklists



Callopietria maillardi (Guenée, 1862)
Malolotja and Mlawula Checklists



Callopietria yerburii Butler, 1884
Malolotja and Mlawula Checklists

- UCT-ADU LepiMAP; Pine Valley; 17/02/2017; Kate Braun; LepiMAP 615873
- UCT-ADU LepiMAP; Pine Valley; 15/02/2017; Kate Braun; LepiMAP 615674
- UCT-ADU LepiMAP; Pine Valley; 25/04/2017; Kate Braun; LepiMAP 622639
- UCT-ADU LepiMAP; Pine Valley; 17/02/2017; Kate Braun; LepiMAP 615932
- UCT-ADU LepiMAP; Pine Valley; 17/02/2017; Kate Braun; LepiMAP 615835

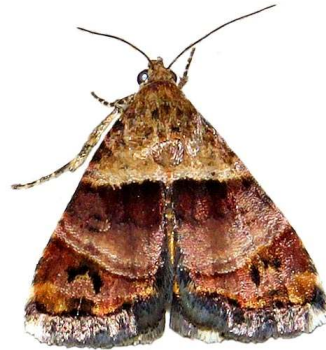
- UCT-ADU LepiMAP; Pine Valley; 29/01/2017; Kate Braun; LepiMAP 613922
- UCT-ADU LepiMAP; Pine Valley; 31/01/2017; Kate Braun; LepiMAP 614160
- UCT-ADU LepiMAP; Pine Valley; 17/02/2017; Kate Braun; LepiMAP 615853



Noctuidae: Eustrotiinae

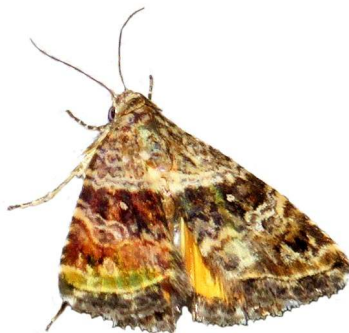
Acontiola cryptochrysea (Hampson, 1902)
Malolotja and Mlawula Checklists
(*Metachrostis cryptochrysea*, *Ozarba cryptochrysea*)

- UCT-ADU LepiMAP; Pine Valley; 11/12/2018; Kate Braun; LepiMAP 664907



Acontiola heliastis (Hampson, 1902)
UCT-ADU LepiMap
(*Ozarba heliastis*)

- UCT-ADU LepiMAP; Pine Valley; 16/12/2017; Kate Braun; LepiMAP 636323



Acontiola hypoxantha (Wallengren, 1860)
Malolotja and Mlawula Checklists
(*Ozarba hypoxantha*)

Acontiola vultuosa (Distant, 1898)

UCT-ADU LepiMap
(*Ozarba bisexualis*)

- UCT-ADU LepiMAP; Pine Valley; 17/03/2017; Kate Braun; LepiMAP 618145
- UCT-ADU LepiMAP; Pine Valley; 11/10/2018; Kate Braun; LepiMAP 660276
- UCT-ADU LepiMAP; Pine Valley; 04/01/2019; Kate Braun; LepiMAP 667838



Aconzarba decisima (Walker, 1865)
UCT-ADU LepiMap

- UCT-ADU LepiMAP; Pine Valley; 09/03/2018; Kate Braun; LepiMAP 642592
- UCT-ADU LepiMAP; Mlawula; 01/01/2015; Kate Braun; LepiMAP 559362
- UCT-ADU LepiMAP; Pine Valley; 30/12/2016; Kate Braun; LepiMAP 611541
- UCT-ADU LepiMAP; Pine Valley; 29/01/2018; Kate Braun; LepiMAP 639975
- UCT-ADU LepiMAP; Pine Valley; 01/02/2018; Kate Braun; LepiMAP 640095



Eustrotia bryophilina Hampson, 1910
Malolotja and Mlawula Checklists



Maliattha blandula (Guenée, 1863)
Malolotja and Mlawula Checklists
(*Maliattha blandula*)

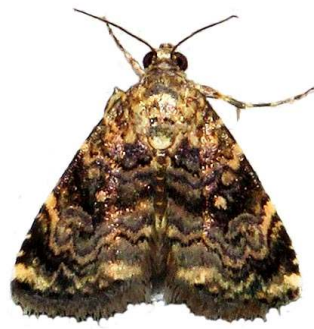
- UCT-ADU LepiMAP; Pine Valley; 30/01/2017; Kate Braun; LepiMAP 614100



Maliattha subblandula Hacker, 2016

UCT-ADU LepiMAP

- UCT-ADU LepiMAP; Pine Valley; 06/04/2017; Kate Braun; LepiMAP 620357
- UCT-ADU LepiMAP; Pine Valley; 01/10/2018; Kate Braun; LepiMAP 659292
- UCT-ADU LepiMAP; Pine Valley; 26/02/2018; Kate Braun; LepiMAP 641577
- UCT-ADU LepiMAP; Pine Valley; 09/02/2018; Kate Braun; LepiMAP 640505
- UCT-ADU LepiMAP; Pine Valley; 19/01/2018; Kate Braun; LepiMAP 639476
- UCT-ADU LepiMAP; Pine Valley; 21/12/2017; Kate Braun; LepiMAP 636641
- UCT-ADU LepiMAP; Pine Valley; 10/12/2017; Kate Braun; LepiMAP 635811
- UCT-ADU LepiMAP; Pine Valley; 09/11/2017; Kate Braun; LepiMAP 634464
- UCT-ADU LepiMAP; Pine Valley; 04/02/2017; Kate Braun; LepiMAP 614672
- UCT-ADU LepiMAP; Pine Valley; 06/02/2017; Kate Braun; LepiMAP 614948
- UCT-ADU LepiMAP; Pine Valley; 17/02/2017; Kate Braun; LepiMAP 615929
- UCT-ADU LepiMAP; Pine Valley; 29/01/2017; Kate Braun; LepiMAP 613928
- UCT-ADU LepiMAP; Pine Valley; 04/01/2017; Kate Braun; LepiMAP 612078
- UCT-ADU LepiMAP; Pine Valley; 08/01/2016; Kate Braun; LepiMAP 586996
- UCT-ADU LepiMAP; Pine Valley; 13/12/2015; Kate Braun; LepiMAP 586777
- UCT-ADU LepiMAP; Pine Valley; 13/12/2015; Kate Braun; LepiMAP 586775
- UCT-ADU LepiMAP; Pine Valley; 20/03/2017; Kate Braun; LepiMAP 618603



Ozarba albimarginata (Hampson, 1896)
Malolotja and Mlawula Checklists

Ozarba bipartita bipartita (Hampson, 1902)
Malolotja and Mlawula Checklists

- UCT-ADU LepiMAP; Mlawula; 06/10/2018; Kate Braun; LepiMAP 569879
- UCT-ADU LepiMAP; Pine Valley; 30/01/2017; Kate Braun; LepiMAP 614119



Ozarba corniculans (Wallengren, 1860)
Malolotja and Mlawula Checklists

- UCT-ADU LepiMAP; Pine Valley; 14/01/2018; Kate Braun; LepiMAP 639152



Ozarba hemiochra Hampson, 1910
Malolotja and Mlawula Checklists

- UCT-ADU LepiMAP; Pine Valley; 12/01/2018; Kate Braun; LepiMAP 638955
- UCT-ADU LepiMAP; Pine Valley; 09/10/2018; Kate Braun; LepiMAP 660115



Ozarba hemipolia Hampson, 1910
Malolotja and Mlawula Checklists

Ozarba hypotaenia (Wallengren, 1860)
Malolotja and Mlawula Checklists

Ozarba isocampta Hampson, 1910
Malolotja and Mlawula Checklists

Ozarba jansae Berio, 1940
UCT-ADU LepiMap

- UCT-ADU LepiMAP; Pine Valley; 23/12/2017; Kate Braun; LepiMAP 636796
- UCT-ADU LepiMAP; Pine Valley; 17/12/2017; Kate Braun; LepiMAP 636436

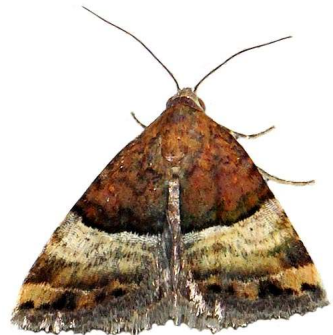


Ozarba madanda (Felder R. & Rogenhofer, 1875)

Malolotja and Mlawula Checklists

Ozarba perplexa Saalmüller, 1891
Malolotja and Mlawula Checklists

Ozarba semipurpurea (Hampson, 1902)
Malolotja and Mlawula Checklists
[add records]



Ozarba sp.
UCT-ADU LepiMap

- UCT-ADU LepiMAP; Pine Valley; 13/08/2017; Kate Braun; LepiMAP 630024
- UCT-ADU LepiMAP; Pine Valley; 13/01/2018; Kate Braun; LepiMAP 638961
- UCT-ADU LepiMAP; Pine Valley; 15/04/2017; Kate Braun; LepiMAP 621348
- UCT-ADU LepiMAP; Pine Valley; 25/02/2017; Kate Braun; LepiMAP 617098
- UCT-ADU LepiMAP; Pine Valley; 29/11/2016; Kate Braun; LepiMAP 610429



Mimasura tripunctoides Poole, 1989
Malolotja and Mlawula Checklists
(*Mimasura tripuncta*)



Ozarba accincta (Distant, 1898)
Malolotja and Mlawula Checklists

Ozarba apicalis Hampson, 1910
UCT-ADU LepiMap

- UCT-ADU LepiMAP; Malolotja; 07/04/2018; Kate Braun; LepiMAP 645132

- UCT-ADU LepiMAP; Pine Valley; 03/04/2016; Kate Braun; LepiMAP 592332
- UCT-ADU LepiMAP; Pine Valley; 11/10/2015; Kate Braun; LepiMAP 579897
- UCT-ADU LepiMAP; Pine Valley; 12/03/2014; Kate Braun; LepiMAP 40023



Pseudozarba opella (Swinhoe, 1885)
Malolotja and Mlawula Checklists

- UCT-ADU LepiMAP; Pine Valley; 18/12/2017; Kate Braun; LepiMAP 636515
- UCT-ADU LepiMAP; Pine Valley; 24/12/2017; Kate Braun; LepiMAP 636906



Noctuidae: Hadeninae

Apopasta dipterigidia (Hampson, 1902)
Malolotja and Mlawula Checklists

Apospasta fuscirufa (Hampson, 1905)
Malolotja and Mlawula Checklists
(*Polia fuscirufa*)

Borolia cupreata Hampson, 1905
Malolotja and Mlawula Checklists
(*Leucania cupreata*)

Brithysana speyeri (Felder & Rogenhofer, 1874)
Malolotja and Mlawula Checklists
(*Polia speyeri*)

Diaphone eumela (Cramer, 1781)
Malolotja and Mlawula Checklists



Dicerogastra nr furvilinea (Hampson, 1902)
Malolotja and Mlawula Checklists
(*Polia nr furvilinea*)

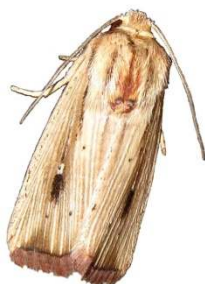
Hadena bulgeri (Felder & Rogenhofer, 1874)
Malolotja and Mlawula Checklists



Leucania phaea Hampson, 1902
Malolotja and Mlawula Checklists
(*Mythimna phaea*)

Leucania atrinota (Hampson, 1905)
UCT-ADU LepiMap

- UCT-ADU LepiMAP; Pine Valley; 04/02/2017; Kate Braun; LepiMAP 614609
- UCT-ADU LepiMAP; Pine Valley; 16/02/2017; Kate Braun; LepiMAP 615735
- UCT-ADU LepiMAP; Pine Valley; 29/08/2018; Kate Braun; LepiMAP 658921



Lophotarsia ochroprocta Hampson, 1902
Malolotja and Mlawula Checklists

- UCT-ADU LepiMAP; Pine Valley; 31/01/2017; Kate Braun; LepiMAP 614175
- UCT-ADU LepiMAP; Pine Valley; 10/10/2018; Kate Braun; LepiMAP 660179
- UCT-ADU LepiMAP; Pine Valley; 28/03/2017; Kate Braun; LepiMAP 619294
- UCT-ADU LepiMAP; Pine Valley; 20/03/2017; Kate Braun; LepiMAP 618571
- UCT-ADU LepiMAP; Pine Valley; 18/03/2017; Kate Braun; LepiMAP 618331
- UCT-ADU LepiMAP; Pine Valley; 18/03/2017; Kate Braun; LepiMAP 618329
- UCT-ADU LepiMAP; Pine Valley; 16/03/2017; Kate Braun; LepiMAP 618091
- UCT-ADU LepiMAP; Pine Valley; 04/02/2017; Kate Braun; LepiMAP 614635
- UCT-ADU LepiMAP; Pine Valley; 31/01/2017; Kate Braun; LepiMAP 614216
- UCT-ADU LepiMAP; Pine Valley; 05/01/2017; Kate Braun; LepiMAP 612080
- UCT-ADU LepiMAP; Pine Valley; 01/02/2017; Kate Braun; LepiMAP 614274



Mythimna apparata (Wallengren, 1875)
Malolotja and Mlawula Checklists
(*Borolia apparata*)

Mythimna hamata (Wallengren, 1856)

UCT-ADU LepiMAP

- UCT-ADU LepiMAP; Pine Valley; 31/01/2017; Kate Braun; LepiMAP 614217
- UCT-ADU LepiMAP; Mlawula; 06/01/2018; Kate Braun; LepiMAP 638918



Mythimna internata (Möschler, 1884)
Malolotja and Mlawula Checklists
(*Borolia rhabdophora*)

- UCT-ADU LepiMAP; Pine Valley; 20/04/2017; Kate Braun; LepiMAP 622026
- UCT-ADU LepiMAP; Pine Valley; 19/10/2017; Kate Braun; LepiMAP 633336
- UCT-ADU LepiMAP; Pine Valley; 16/12/2017; Kate Braun; LepiMAP 636320
- UCT-ADU LepiMAP; Pine Valley; 16/12/2017; Kate Braun; LepiMAP 636327
- UCT-ADU LepiMAP; Pine Valley; 01/10/2018; Kate Braun; LepiMAP 659284



Mythimna laevusta Berio, 1955
Malolotja and Mlawula Checklists
(*Cirphis usta*)

Mythimna languida (Walker, 1858)
UCT-ADU LepiMap

- UCT-ADU LepiMAP; Rosecraft Farm; 08/11/2018; Kate Braun; LepiMAP 661951



Mythimna melianoides (Möschler, 1884)
UCT-ADU LepiMap

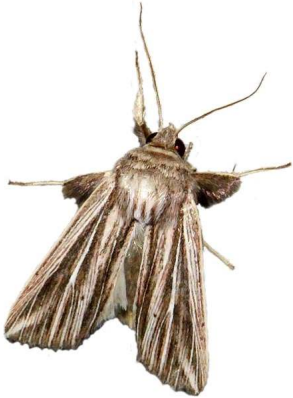
- UCT-ADU LepiMAP; Pine Valley; 02/10/2018; Kate Braun; LepiMAP 659393
- Mythimna nigriparsa*** (Hampson, 1902)
UCT-ADU LepiMAP
- UCT-ADU LepiMAP; Pine Valley; 22/05/2017; Kate Braun; LepiMAP 626417



Mythimna phaeochroa (Hampson, 1905)
Malolotja and Mlawula Checklists
(*Borolia phaeochroa*)

Mythimna rubescens (Hampson, 1905)
UCT-ADU LepiMap

- UCT-ADU LepiMAP; Pine Valley; 18/04/2017; Kate Braun; LepiMAP 621825



Mythimna sarca (Hampson, 1902)
Malolotja and Mlawula Checklists
(*Senta sarca*)

- UCT-ADU LepiMAP; Pine Valley; 30/09/2018; Kate Braun; LepiMAP 659159



Mythimna tacuna (Felder & Rogenhofer, 1874)
Malolotja and Mlawula Checklists
(*Borolia tacuna*)

- UCT-ADU LepiMAP; Pine Valley; 08/01/2016; Kate Braun; LepiMAP 586994
- UCT-ADU LepiMAP; Pine Valley; 28/11/2016; Kate Braun; LepiMAP 610421
- UCT-ADU LepiMAP; Pine Valley; 16/08/2017; Kate Braun; LepiMAP 630314
- UCT-ADU LepiMAP; Pine Valley; 09/10/2018; Kate Braun; LepiMAP 660124
- UCT-ADU LepiMAP; Pine Valley; 10/10/2018; Kate Braun; LepiMAP 660178



Mythimna tincta (Walker, 1858)
UCT-ADU LepiMap

- UCT-ADU LepiMAP; Pine Valley; 26/04/2017; Kate Braun; LepiMAP 622887
- UCT-ADU LepiMAP; Pine Valley; 10/10/2017; Kate Braun; LepiMAP 632721



Mythimna viettei Rungs, 1956
UCT-ADU LepiMap

- UCT-ADU LepiMAP; Pine Valley; 29/12/2018; Kate Braun; LepiMAP 666683



Mythimna sp.

UCT-ADU LepiMap

- UCT-ADU LepiMAP; Pine Valley; 18/04/2017; Kate Braun; LepiMAP 621843
- UCT-ADU LepiMAP; Pine Valley; 18/04/2017; Kate Braun; LepiMAP 621844

***Polia consanguis* ???**

Malolotja and Mlawula Checklists
(*Polia consanguis*)

Polia cuprescens Hampson, 1905
Malolotja and Mlawula Checklists

Tycomarptes inferior (Guenée, 1852)
Malolotja and Mlawula Checklists

- UCT-ADU LepiMAP; Pine Valley; 16/08/2017; Kate Braun; LepiMAP 630307
- UCT-ADU LepiMAP; Pine Valley; 29/09/2017; Kate Braun; LepiMap 632373
- UCT-ADU LepiMAP; Pine Valley; 02/11/2017; Kate Braun; LepiMAP 634042
- UCT-ADU LepiMAP; Pine Valley; 18/12/2017; Kate Braun; LepiMAP 636508
- UCT-ADU LepiMAP; Pine Valley; 11/10/2018; Kate Braun; LepiMAP 660282
- UCT-ADU LepiMAP; Pine Valley; 15/10/2018; Kate Braun; LepiMAP 660449
- UCT-ADU LepiMAP; Pine Valley; 15/10/2018; Kate Braun; LepiMAP 660476



Tycomarptes praetermissa (Walker, 1857)
UCT-ADU LepiMap

- UCT-ADU LepiMAP; Pine Valley; 16/08/2017; Kate Braun; LepiMAP 630308



Vietteania intestata (Walker, 1856)
Malolotja and Mlawula Checklists
(*Vietteania torrentium*)



Noctuidae: Heliiothinae

Adisura aerugo (Felder & Rogenhofer, 1874)

UCT-ADU LepiMap

- UCT-ADU LepiMAP; Pine Valley; 10/01/2019; Kate Braun; LepiMAP 668574



Helicoverpa armigera armigera (Hübner, 1808)

- Malolotja and Mlawula Checklists
- iNaturalist; Pine Valley; 27/11/2016; Kate Braun; iNaturalist 11287464
 - UCT-ADU LepiMAP; Pine Valley; 29/11/2016; Kate Braun; LepiMAP 610431
 - UCT-ADU LepiMAP; Pine Valley; 09/11/2017; Kate Braun; LepiMAP 634462
 - UCT-ADU LepiMAP; Pine Valley; 21/12/2017; Kate Braun; LepiMAP 636652



Heliiothis scutuligera Guenée, 1852
Malolotja and Mlawula Checklists
(*Heliiothis scutuligera*)

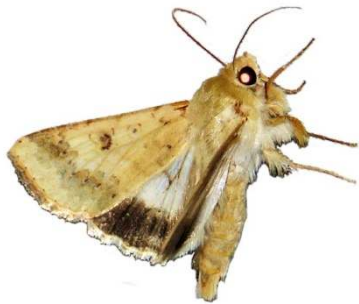
- UCT-ADU LepiMAP; Mhlambanyatsi; 24/11/2007; Roland H; LepiMAP 35170



Noctuidae: Noctuinae: Noctuini

Agrotis biconicus (Hübner, 1808)
Malolotja and Mlawula Checklists
(*Agrotis spiniferus*)

- AfroMoths; Malkerns, Nyanza; 09/07/2002; T Baron;
- UCT-ADU LepiMAP; Mlawula; 23/03/2017; Kate Braun; LepiMAP 618998



Helicoverpa assulta (Guenée, 1852)
Afromoths: Hacker, Schreier & Goater (2012)

Heliiothis conifera (Hampson, 1913)
Malolotja and Mlawula Checklists;
Afromoths: Hacker, Schreier & Goater (2012)
(*Heliiothis fuscimacula*)

Heliiothis flavigera (Hampson, 1907)
Malolotja and Mlawula Checklists
(*Heliiothis flavescens*)

Heliiothis flavirufa (Hampson, 1910)
Malolotja and Mlawula Checklists;
Afromoths: Schintlmeister & Witt (2015)
(*Calamia flavirufa*)

- UCT-ADU LepiMAP; Pine Valley; 20/12/2014; Kate Braun; LepiMAP 559286



Masalia galathea (Wallengren, 1856)
Malolotja and Mlawula Checklists
(*Heliiothis galathea*)



Noctuidae: Incertae Sedis

Grammarctia bilinea (Walker, 1865)
Malolotja and Mlawula Checklists

- UCT-ADU LepiMAP; Pine Valley; 13/12/2015; Kate Braun; LepiMAP 586773
- UCT-ADU LepiMAP; Pine Valley; 09/10/2018; Kate Braun; LepiMAP 660108
- UCT-ADU LepiMAP; Pine Valley; 09/11/2017; Kate Braun; LepiMAP 634492
- UCT-ADU LepiMAP; Pine Valley; 31/10/2014; Kate Braun; LepiMAP 555174
- UCT-ADU LepiMAP; Pine Valley; 20/10/2014; Kate Braun; LepiMAP 553901
- UCT-ADU LepiMAP; Pine Valley; 06/11/2013; Kate Braun; LepiMAP 38500
- UCT-ADU LepiMAP; Pine Valley; 13/11/2017; Kate Braun; LepiMAP 634802
- UCT-ADU LepiMAP; Pine Valley; 07/10/2015; Kate Braun; LepiMAP 579350



Proschaliphora albida Hampson, 1909
UCT-ADU LepiMap

- UCT-ADU LepiMAP; Pine Valley; 19/01/2018; Kate Braun; LepiMAP 639468



Agrotis denticulosus Wallengren, 1860
Malolotja and Mlawula Checklists
(*Agrotis longidentifera*)

Agrotis ipsilon (Hufnagel, 1766)
Malolotja and Mlawula Checklists



Agrotis oliveatus Hampson, 1902
Malolotja and Mlawula Checklists
(*Lycophotia oliveata*)



Agrotis segetum (Denis & Schiffermüller, 1775)
Malolotja and Mlawula Checklists



Amazonides atrisigna (Hampson, 1911)
Malolotja and Mlawula Checklists

Axylia annularis Saalmüller, 1891
UCT-ADU LepiMAP

- UCT-ADU LepiMAP; Pine Valley; 09/11/2017; Kate Braun; LepiMAP 634474
- UCT-ADU LepiMAP; Pine Valley; 26/10/2018; Kate Braun; LepiMAP 660864
- UCT-ADU LepiMAP; Pine Valley; 10/10/2018; Kate Braun; LepiMAP 660188
- UCT-ADU LepiMAP; Pine Valley; 01/10/2018; Kate Braun; LepiMAP 659282
- UCT-ADU LepiMAP; Pine Valley; 09/04/2018; Kate Braun; LepiMAP 645333
- UCT-ADU LepiMAP; Pine Valley; 09/04/2018; Kate Braun; LepiMAP 645308
- UCT-ADU LepiMAP; Pine Valley; 13/01/2018; Kate Braun; LepiMAP 638981
- UCT-ADU LepiMAP; Pine Valley; 23/12/2017; Kate Braun; LepiMAP 636819
- UCT-ADU LepiMAP; Pine Valley; 12/11/2017; Kate Braun; LepiMAP 634701
- UCT-ADU LepiMAP; Pine Valley; 09/11/2017; Kate Braun; LepiMAP 634488
- UCT-ADU LepiMAP; Pine Valley; 30/01/2017; Kate Braun; LepiMAP 614103
- UCT-ADU LepiMAP; Pine Valley; 16/03/2017; Kate Braun; LepiMAP 618080
- UCT-ADU LepiMAP; Pine Valley; 06/11/2017; Kate Braun; LepiMAP 634292
- UCT-ADU LepiMAP; Pine Valley; 16/03/2017; Kate Braun; LepiMAP 618079
- UCT-ADU LepiMAP; Pine Valley; 20/03/2017; Kate Braun; LepiMAP 618533
- UCT-ADU LepiMAP; Pine Valley; 15/04/2017; Kate Braun; LepiMAP 621346
- UCT-ADU LepiMAP; Pine Valley; 25/04/2017; Kate Braun; LepiMAP 622629
- UCT-ADU LepiMAP; Pine Valley; 22/09/2017; Kate Braun; LepiMAP 632122
- UCT-ADU LepiMAP; Pine Valley; 10/10/2017; Kate Braun; LepiMAP 632725
- UCT-ADU LepiMAP; Pine Valley; 15/10/2017; Kate Braun; LepiMAP 633127
- UCT-ADU LepiMAP; Pine Valley; 17/02/2017; Kate Braun; LepiMAP 615840



Axylia ustula (Hampson, 1913)
Malolotja and Mlawula Checklists
(*Amazonides ustula*)

Effractalis effracta (Distant, 1898)

- UCT-ADU LepiMAP
- UCT-ADU LepiMAP; Pine Valley; 06/03/2017; Kate Braun; LepiMAP 617390
 - UCT-ADU LepiMAP; Pine Valley; 17/03/2017; Kate Braun; LepiMAP 618158
 - UCT-ADU LepiMAP; Pine Valley; 21/03/2017; Kate Braun; LepiMAP 618671
 - UCT-ADU LepiMAP; Pine Valley; 21/03/2017; Kate Braun; LepiMAP 618668
 - UCT-ADU LepiMAP; Pine Valley; 23/04/2017; Kate Braun; LepiMAP 622360
 - UCT-ADU LepiMAP; Pine Valley; 15/10/2017; Kate Braun; LepiMAP 633136

- UCT-ADU LepiMAP; Pine Valley; 06/11/2017; Kate Braun; LepiMAP 634301
- UCT-ADU LepiMAP; Pine Valley; 09/11/2017; Kate Braun; LepiMAP 634471
- UCT-ADU LepiMAP; Pine Valley; 16/12/2017; Kate Braun; LepiMAP 636307
- UCT-ADU LepiMAP; Pine Valley; 14/01/2018; Kate Braun; LepiMAP 639144
- UCT-ADU LepiMAP; Pine Valley; 21/01/2018; Kate Braun; LepiMAP 639577
- UCT-ADU LepiMAP; Pine Valley; 04/04/2018; Kate Braun; LepiMAP 644856



Lycophotia ecvinacea Hampson, 1903
Malolotja and Mlawula Checklists

Lycophotia melanephra ?? Hampson, 1909
Malolotja and Mlawula Checklists

Lycophotia perirrorata ??
Malolotja and Mlawula Checklists

Mentaxya albifrons (Geyer, 1837)
Malolotja and Mlawula Checklists

- UCT-ADU LepiMAP; Pine Valley; 20/03/2017; Kate Braun; LepiMAP 618614
- UCT-ADU LepiMAP; Pine Valley; 18/04/2017; Kate Braun; LepiMAP 621815



Mentaxya atritegulara (Hampson, 1902)
Malolotja and Mlawula Checklists

Mentaxya ignicollis (Walker, 1857)
Malolotja and Mlawula Checklists

- UCT-ADU LepiMAP; Malolotja; 20/03/2010; Webb P.; LepiMAP 11934
- UCT-ADU LepiMAP; Pine Valley; 26/10/2018; Kate Braun; LepiMAP 660850



Mentaxya rimosa (Guenée, 1852)
Malolotja and Mlawula Checklists

dre (Hampson, 1902)
Malolotja and Mlawula Checklists
(*Amazonides interstriata*)



Ochropleura reductistriga Krüger, 2005
Afro-moths: Schintlmeister & Witt (2015)

Noctuidae: Oncocnemidinae

Anedhella interrupta (Janse, 1938)
UCT-ADU LepiMAP

- UCT-ADU LepiMAP; Pine Valley; 25/09/2018; Kate Braun; LepiMAP 658559
- UCT-ADU LepiMAP; Pine Valley; 01/10/2018; Kate Braun; LepiMAP 659279
- UCT-ADU LepiMAP; Pine Valley; 26/10/2018; Kate Braun; LepiMAP 660863



Anedhella rectiradiata (Hampson, 1902)
UCT-ADU LepiMAP

- UCT-ADU LepiMAP; Mlawula; 20/12/2018; Kate Braun; LepiMAP 666200



Noctuidae: Plusiinae: Abrostolini

Abrostola brevipennis (Walker, 1858)
Malolotja and Mlawula Checklists

Noctuidae: Plusiinae:

Argyrogrammatini

Chrysodeixis acuta (Walker, 1858)
Malolotja and Mlawula Checklists

- NMR Insecta NMR996800109606; Mbabane; 18/02/1990; Insecta
- UCT-ADU LepiMAP; Pine Valley; 20/01/2014; Kate Braun; LepiMAP 39553



Chrysodeixis chalcites (Esper, 1798)
Malolotja and Mlawula Checklists

- UCT-ADU LepiMAP; Pine Valley; 17/02/2017; Kate Braun; LepiMAP 615922
- UCT-ADU LepiMAP; Mlawula; 18/01/2017; Kate



Ctenoplusia fracta (Walker, 1858)
Malolotja and Mlawula Checklists



Ctenoplusia limbirena (Guenée, 1852)
Malolotja and Mlawula Checklists

Ctenoplusia melanocephala (Möschler, 1884)
Malolotja and Mlawula Checklists
(*Plusia melanocephala*)

Ctenoplusia molybdina (Dufay, 1968)
Malolotja and Mlawula Checklists
(*Trichoplusia molybdina*)

Ctenoplusia phocea (Hampson, 1910)
Malolotja and Mlawula Checklists

Ctenoplusia polycampta Dufay, 1972
Malolotja and Mlawula Checklists

Ctenoplusia vittata (Wallengren, 1856)
Malolotja and Mlawula Checklists
(*Trichoplusia vittata*)

- UCT-ADU LepiMAP; Pine Valley; 05/04/2017; Kate Braun; LepiMAP 620271



Thysonoplusia angulum Guenée, 1852
Malolotja and Mlawula Checklists
(*Trichoplusia angulum*)

Thysonoplusia exquisita (Felder & Rogenhofer, 1874)
Malolotja and Mlawula Checklists
(*Trichoplusia exquisita*)

Thysonoplusia indicator (Walker, 1858)
Malolotja and Mlawula Checklists
(*Trichoplusia indicator*)

- UCT-ADU LepiMAP; Mhlambanyatsi; 24/11/2007; Roland H; LepiMAP 35171



Thysonoplusia orichalcea (Fabricius, 1775)
Malolotja and Mlawula Checklists
(*Trichoplusia orichalcea*)

- UCT-ADU LepiMAP; Pine Valley; 03/04/2017; Kate Braun; LepiMAP 620140



Thysonoplusia violascens (Hampson, 1913)
Malolotja and Mlawula Checklists
(*Trichoplusia violescens*)

- UCT-ADU LepiMAP; Pine Valley; 25/04/2017; Kate Braun; LepiMAP 622641



Trichoplusia ni ni (Hübner, 1803)
Malolotja and Mlawula Checklists
(*Trichoplusia ni*)

Noctuidae: Plusiinae: Plusiini

Syngrapha circumflexa (Linnaeus, 1767)
Malolotja and Mlawula Checklists

- UCT-ADU LepiMAP; Pine Valley; 06/10/2015; Kate Braun; LepiMAP 579345



Noctuidae: Stictopterinae

Lophoptera litigiosa (Boisduval, 1833)
Malolotja and Mlawula Checklists
(*Lophoptera alutacea*)

Noctuidae: Thiacidinae

Thiacidid fractilinea (Pinhey, 1968)
Afromoths: Schintlmeister & Witt (2015)

Thiacidid nigrimacula (Pinhey, 1968)
Afromoths: Schintlmeister & Witt (2015)

Noctuidae: Xyleninae

Acrapex brunnea Hampson, 1910
Malolotja and Mlawula Checklists

Acrapex unicolora (Hampson, 1914)
Malolotja and Mlawula Checklists

Afrogortyna trinota (Herrich-Schäffer, 1854)
Malolotja and Mlawula Checklists
(*Leucochlaena trinota*)

Ariathisa abyssinia (Guenée, 1852)
Malolotja and Mlawula Checklists
(*Spodoptera excisa*, *Spodoptera abyssinia*)

- UCT-ADU LepiMAP; Pine Valley; 15/10/2018; Kate Braun; LepiMAP 660475
- UCT-ADU LepiMAP; Pine Valley; 19/10/2017; Kate Braun; LepiMAP 633310
- UCT-ADU LepiMAP; Pine Valley; 14/02/2018; Kate Braun; LepiMAP 640928
- UCT-ADU LepiMAP; Pine Valley; 14/03/2018; Kate Braun; LepiMAP 642818
- UCT-ADU LepiMAP; Pine Valley; 02/04/2018; Kate Braun; LepiMAP 644828
- UCT-ADU LepiMAP; Pine Valley; 09/04/2018; Kate Braun; LepiMAP 645334
- UCT-ADU LepiMAP; Pine Valley; 05/05/2018; Kate Braun; LepiMAP 647710



Athetis albipuncta (Hampson, 1902)
Malolotja and Mlawula Checklists

Athetis collaris (Wallengren, 1856)
Malolotja and Mlawula Checklists

Athetis flavipuncta Hampson, 1909
UCT-ADU LepiMAP

- UCT-ADU LepiMAP; Pine Valley; 02/10/2018; Kate Braun; LepiMAP 659343



Athetis heliastis Hampson, 1909
UCT-ADU LepiMap

- UCT-ADU LepiMAP; Pine Valley; 14/04/2017; Kate Braun; LepiMAP 621144



Athetis ignava (Guenée, 1852)
Malolotja and Mlawula Checklists



Athetis melanomma Hampson, 1920
Malolotja and Mlawula Checklists

Athetis pigra (Guenée, 1852)
Malolotja and Mlawula Checklists

Busseola fusca (Fuller, 1901)
Malolotja and Mlawula Checklists
• MZLU Entomology 211421 ; MZLU Entomology
• MZLU Entomology 211421; Entomology

Callyna monoleuca Walker, 1858
Malolotja and Mlawula Checklists

Callyna nigerrima Hampson, 1902
UCT-ADU LepiMAP
• UCT-ADU LepiMAP; Pine Valley 11/12/2018; Kate Braun; LepiMAP 664925
• UCT-ADU LepiMAP; Pine Valley; 02/12/2018; Kate Braun; LepiMAP 663891
• UCT-ADU LepiMAP; Pine Valley; 08/03/2018; Kate Braun; LepiMAP 643166
• UCT-ADU LepiMAP; Pine Valley; 09/12/2017; Kate Braun; LepiMAP 635764



Caradrina glaucistis Hampson, 1902
UCT-ADU LepiMap
• UCT-ADU LepiMAP; Pine Valley; 06/04/2017; Kate Braun; LepiMAP 620344



Caradrina tenebrata Hampson, 1902
Malolotja and Mlawula Checklists

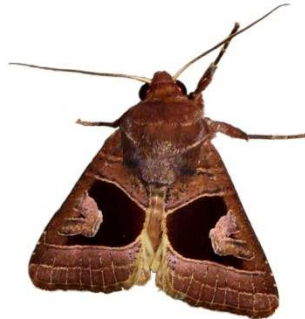
• UCT-ADU LepiMAP; Pine Valley; 01/01/2019; Kate Braun; LepiMAP 667273



Cetola costata Gaede, 1915
UCT-ADU LepiMAP
• UCT-ADU LepiMAP; Rosecraft Farm; 08/11/2018; Kate Braun; LepiMAP 661929



Conservula alambica Gaede, 1915
Malolotja and Mlawula Checklists
(*Appana alambica*)
• UCT-ADU LepiMAP; Pine Valley; 06/02/2018; Kate Braun; LepiMAP 640355



Conservula cinisigna de Joannis, 1906
Malolotja and Mlawula Checklists
(*Appana cinisigma*)
• UCT-ADU LepiMAP; Pine Valley; 12/12/2017; Kate Braun; LepiMAP 636046



Conservula minor Holland, 1896
Malolotja and Mlawula Checklists
(*Appana minor*)

Cosmia natalensis (Prout A. E., 1925)
Malolotja and Mlawula Checklists
(*Xylomania natalensis*?)

Ethiopicia cupricolor (Hampson, 1902)
Malolotja and Mlawula Checklists
• UCT-ADU LepiMAP; Pine Valley; 03/04/2018; Kate Braun; LepiMAP 644847
• UCT-ADU LepiMAP; Pine Valley; 28/03/2017; Kate

Braun; LepiMAP 619282
• UCT-ADU LepiMAP; Pine Valley; 15/10/2017; Kate Braun; LepiMAP 633111
• UCT-ADU LepiMAP; Pine Valley; 12/11/2017; Kate Braun; LepiMAP 634665
• UCT-ADU LepiMAP; Pine Valley; 23/12/2017; Kate Braun; LepiMAP 636798
• UCT-ADU LepiMAP; Pine Valley; 18/03/2017; Kate Braun; LepiMAP 618306
• UCT-ADU LepiMAP; Pine Valley; 18/03/2018; Kate Braun; LepiMAP 643156
• UCT-ADU LepiMAP; Pine Valley; 12/10/2017; Kate Braun; LepiMAP 632819
• UCT-ADU LepiMAP; Pine Valley; 11/10/2018; Kate Braun; LepiMAP 660285
• UCT-ADU LepiMAP; Pine Valley; 26/10/2018; Kate Braun; LepiMAP 660856
• UCT-ADU LepiMAP; Pine Valley; 06/02/2018; Kate Braun; LepiMAP 640375
• UCT-ADU LepiMAP; Pine Valley; 26/10/2016; Kate Braun; LepiMAP 607834
• UCT-ADU LepiMAP; Pine Valley; 19/10/2017; Kate Braun; LepiMAP 633326
• UCT-ADU LepiMAP; Pine Valley; 09/10/2016; Kate Braun; LepiMAP 605300
• UCT-ADU LepiMAP; Pine Valley; 17/03/2017; Kate Braun; LepiMAP 618170
• UCT-ADU LepiMAP; Pine Valley; 26/10/2016; Kate Braun; LepiMAP 607835
• UCT-ADU LepiMAP; Pine Valley; 18/11/2016; Kate Braun; LepiMAP 609641
• UCT-ADU LepiMAP; Pine Valley; 30/11/2016; Kate Braun; LepiMAP 610444
• UCT-ADU LepiMAP; Pine Valley; 03/02/2017; Kate Braun; LepiMAP 614476
• UCT-ADU LepiMAP; Pine Valley; 15/02/2017; Kate Braun; LepiMAP 615658
• UCT-ADU LepiMAP; Pine Valley; 23/02/2017; Kate Braun; LepiMAP 616504
• UCT-ADU LepiMAP; Pine Valley; 06/03/2017; Kate Braun; LepiMAP 617398
• UCT-ADU LepiMAP; Pine Valley; 31/01/2017; Kate Braun; LepiMAP 614177



Euplexia augens Felder R. & Rogenhofer, 1875
Malolotja and Mlawula Checklists

Euplexia catephiodes Hampson, 1908
Malolotja and Mlawula Checklists

Feliniopsis consummata consummata (Walker, 1857)
Malolotja and Mlawula Checklists
(*Eutamsia consummata*)

Felinopsis indigna (Herrich-Schäffer, 1854)
Malolotja and Mlawula Checklists
(*Trachea breviscula*)

Hypoplexia conjuncta Hampson, 1908
Malolotja and Mlawula Checklists

Iambia inferalis Walker, 1863

UCT-ADU LepiMap

- UCT-ADU LepiMAP; Pine Valley; 02/12/2016; Kate Braun; LepiMap 610469



Iambia janssei Berio, 1966
Malolotja and Mlawula Checklists

- UCT-ADU LepiMAP; Pine Valley; 26/12/2018; Kate Braun; LepiMap 666330



Iambia melanochlora (Hampson, 1902)
UCT-ADU LepiMAP

- UCT-ADU LepiMAP; Pine Valley; 21/03/2017; Kate Braun; LepiMAP 618675
- UCT-ADU LepiMAP; Pine Valley; 02/10/2018; Kate Braun; LepiMAP 659384
- UCT-ADU LepiMAP; Pine Valley; 20/04/2017; Kate Braun; LepiMAP 621996
- UCT-ADU LepiMAP; Pine Valley; 15/10/2018; Kate Braun; LepiMAP 660455
- UCT-ADU LepiMAP; Pine Valley; 03/04/2017; Kate Braun; LepiMAP 620135
- UCT-ADU LepiMAP; Pine Valley; 07/02/2017; Kate Braun; LepiMAP 615044
- UCT-ADU LepiMAP; Pine Valley; 04/02/2017; Kate Braun; LepiMAP 614648
- UCT-ADU LepiMAP; Pine Valley; 01/02/2017; Kate Braun; LepiMAP 614231
- UCT-ADU LepiMAP; Pine Valley; 11/01/2016; Kate Braun; LepiMAP 587000
- UCT-ADU LepiMAP; Pine Valley; 04/04/2017; Kate Braun; LepiMAP 620223
- UCT-ADU LepiMAP; Pine Valley; 10/02/2017; Kate Braun; LepiMAP 615243



Iambia sp.
UCT-ADU LepiMAP

- UCT-ADU LepiMAP; Pine Valley; 25/09/2017; Kate Braun; LepiMap 632256
- UCT-ADU LepiMAP; Pine Valley; 29/09/2017; Kate Braun; LepiMap 632360
- UCT-ADU LepiMAP; Pine Valley; 18/04/2017; Kate Braun; LepiMAP 621829



Iambiodes nyctostola Hampson, 1918
Malolotja and Mlawula Checklists

- UCT-ADU LepiMAP; Pine Valley; 01/01/2019; Kate Braun; LepiMAP 667270



Interdelta mediafricana Berio, 1964
Malolotja and Mlawula Checklists

Janseodes melanospila (Guenée, 1852)
Malolotja and Mlawula Checklists

Leucotrachea melanobasis (Hampson, 1902)
UCT-ADU LepiMAP

- UCT-ADU LepiMAP; Malolotja; 02/02/2017; Kate Braun; LepiMAP 614357
- UCT-ADU LepiMAP; Pine Valley; 12/11/2017; Kate Braun; LepiMAP 634690



Leumicamia leucosoma (Felder R. & Rogenhofer, 1875)
Malolotja and Mlawula Checklists

- UCT-ADU LepiMAP; Pine Valley; 29/03/2017; Kate Braun; LepiMAP 619396



Magusa versicolora Saalmüller, 1891
Malolotja and Mlawula Checklists

- UCT-ADU LepiMAP; Mlawula; 18/01/2017; Kate Braun; LepiMAP 612790
- UCT-ADU LepiMAP; Pine Valley; 01/02/2017; Kate Braun; LepiMAP 614261
- UCT-ADU LepiMAP; Mlawula; 18/01/2017; Kate Braun; LepiMAP 612636



Magusa viettei (Berio, 1955)
Malolotja and Mlawula Checklists

- UCT-ADU LepiMAP; Mlawula; 18/01/2017; Kate Braun; LepiMAP 612780
- UCT-ADU LepiMAP; Mlawula; 18/01/2017; Kate Braun; LepiMAP 612639



Magusa sp.
UCT-ADU LepiMAP
(*Callixena sp.*)

- Project Noah; Mlawula; 11/11/2013; Tina Petterson; PN 81946045
- UCT-ADU LepiMAP; Mlawula; 18/01/2017; Kate Braun; LepiMAP 612667
- UCT-ADU LepiMAP; Mlawula; 18/01/2017; Kate Braun; LepiMAP 612787



Matopo typica Distant, 1898
Malolotja and Mlawula Checklists

Mimleucania perstriata Hampson, 1909
Malolotja and Mlawula Checklists

Neostichtis nigricostata (Hampson, 1908)
Malolotja and Mlawula Checklists

Ochrocalama xanthia (Hampson, 1905)
Malolotja and Mlawula Checklists

Oligia ambigua (Walker, 1858)
Malolotja and Mlawula Checklists

Oligia confusa Janse, 1937
Malolotja and Mlawula Checklists

Phalerodes cauta (Hampson, 1902)
Malolotja and Mlawula Checklists

Ramesodes divisa (Hampson, 1902)
Malolotja and Mlawula Checklists

- UCT-ADU LepiMAP; Pine Valley; 21/03/2017; Kate Braun; LepiMAP 618670
- UCT-ADU LepiMAP; Pine Valley; 08/01/2016; Kate Braun; LepiMAP 586992
- UCT-ADU LepiMAP; Pine Valley; 11/03/2017; Kate Braun; LepiMAP 617630
- UCT-ADU LepiMAP; Pine Valley; 24/12/2017; Kate Braun; LepiMAP 636922



Spodoptera apertura (Walker, 1865)
Malotlja and Mlawula Checklists

Spodoptera exempta (Walker, 1857)
Malotlja and Mlawula Checklists;
Afro-moths: Schintlmeister & Witt (2015)

Spodoptera exigua (Hübner, 1808)
Malotlja and Mlawula Checklists
• MZLU Entomology 212556 ; MZLU Entomology
• MZLU Entomology 212556; Entomology
• UCT-ADU LepiMAP; Pine Valley; 22/04/2017; Kate Braun; LepiMAP 622338



Spodoptera littoralis (Boisduval, 1833)
Malotlja and Mlawula Checklists



Spodoptera triturrata (Walker, 1857)
Malotlja and Mlawula Checklists

Stenopterygia firmivena (Walker, 1857)
Malotlja and Mlawula Checklists

Tracheplexia lucia (Felder E. & Rogenhofer, 1875)
Malotlja and Mlawula Checklists

Tumidifrontia castaneotincta Hampson, 1902
Malotlja and Mlawula Checklists

Nolidae: Chloephorinae

(*Nolidae*) not identified

- UCT-ADU LepiMap
• UCT-ADU LepiMAP; Pine Valley; 10/02/2017; Kate Braun; LepiMAP 615250
• UCT-ADU LepiMAP; Pine Valley; 29/03/2017; Kate Braun; LepiMAP 619395



Nolidae: Chloephorinae: Chloephorini

Not identified

- UCT-ADU LepiMAP
• UCT-ADU LepiMAP; Pine Valley; 01/10/2018; Kate Braun; LepiMAP 667858



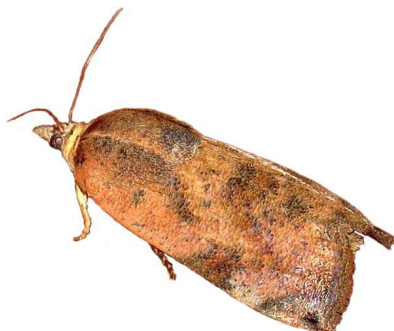
Acripia chloropera Hampson, 1902
Malotlja and Mlawula Checklists

Acripia semiviridis Hampson, 1902
Malotlja and Mlawula Checklists

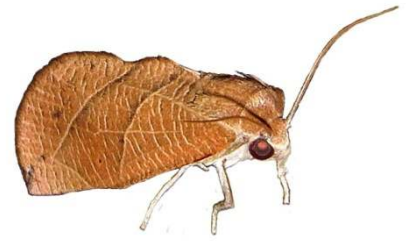
Acripia subolivacea Walker, 1863
UCT-ADU LepiMAP
• UCT-ADU LepiMAP; Pine Valley; 16/02/2017; Kate Braun; LepiMAP 615743



Acripia sp. [delete Hondryches sp.]
UCT-ADU LepiMAP
• UCT-ADU LepiMAP; Pine Valley; 11/02/2017; Kate Braun; LepiMAP 615276



Arcyophora longivalvis Guenée, 1852
UCT-ADU LepiMAP
• UCT-ADU LepiMAP; Mlawula; 26/03/2016; Kate Braun; LepiMAP 591130



Lophocrama phoenicochlora Hampson, 1912

- UCT-ADU LepiMap
• UCT-ADU LepiMAP; Pine Valley; 12/04/2017; Kate Braun; LepiMAP 620829
• UCT-ADU LepiMAP; Pine Valley; 02/05/2017; Kate Braun; LepiMAP 626388
• UCT-ADU LepiMAP; Pine Valley; 06/04/2017; Kate Braun; LepiMAP 620354
• UCT-ADU LepiMAP; Pine Valley; 13/03/2017; Kate Braun; LepiMAP 617830
• UCT-ADU LepiMAP; Pine Valley; 07/02/2017; Kate Braun; LepiMAP 615036



Maurilia arcuata (Walker, 1858)
Malotlja and Mlawula Checklists
• UCT-ADU LepiMAP; Pine Valley; 01/10/2018; Kate Braun; LepiMAP 659296
• UCT-ADU LepiMAP; Mlawula; 23/03/2017; Kate Braun; LepiMAP 618984



Neaxestis griseata (Strand, 1909)
UCT-ADU LepiMap
• UCT-ADU LepiMAP; Mlawula; 18/01/2017; Kate Braun; LepiMAP 612762



Neaxestis rhoda Hampson, 1905
Malolotja and Mlawula Checklists

- UCT-ADU LepiMAP; Mlawula; 03/03/2018; Kate Braun; LepiMAP 642487



Nolidae: Chloephorinae: Sarrothripini

Bryophilopsis tarachoides Mabille, 1900
Malolotja and Mlawula Checklists

Pardasena virgulana (Mabille, 1880)
Malolotja and Mlawula Checklists

- UCT-ADU LepiMAP; Pine Valley; 15/08/2017; Kate Braun; LepiMAP 630273
- UCT-ADU LepiMAP; Pine Valley; 25/04/2017; Kate Braun; LepiMAP 622615
- UCT-ADU LepiMAP; Pine Valley; 04/04/2018; Kate Braun; LepiMAP 644863
- UCT-ADU LepiMAP; Pine Valley; 26/02/2018; Kate Braun; LepiMAP 641573
- UCT-ADU LepiMAP; Pine Valley; 19/01/2018; Kate Braun; LepiMAP 639471
- UCT-ADU LepiMAP; Pine Valley; 24/12/2017; Kate Braun; LepiMAP 636914
- UCT-ADU LepiMAP; Pine Valley; 22/09/2017; Kate Braun; LepiMAP 632134
- UCT-ADU LepiMAP; Pine Valley; 12/08/2017; Kate Braun; LepiMAP 629984
- UCT-ADU LepiMAP; Pine Valley; 18/04/2017; Kate Braun; LepiMAP 621812
- UCT-ADU LepiMAP; Pine Valley; 23/01/2017; Kate Braun; LepiMAP 613210
- UCT-ADU LepiMAP; Mlawula; 23/03/2017; Kate Braun; LepiMAP 619014
- UCT-ADU LepiMAP; Pine Valley; 10/10/2017; Kate Braun; LepiMAP 632728



***Pardasena* sp.**

UCT-ADU LepiMap

- UCT-ADU LepiMAP; Pine Valley; 15/08/2017; Kate Braun; LepiMAP 630267
- UCT-ADU LepiMAP; Pine Valley; 14/03/2018; Kate Braun; LepiMAP 642801
- UCT-ADU LepiMAP; Pine Valley; 30/09/2018; Kate Braun; LepiMAP 659127
- UCT-ADU LepiMAP; Pine Valley; 18/03/2018; Kate Braun; LepiMAP 643174
- UCT-ADU LepiMAP; Pine Valley; 03/02/2017; Kate Braun; LepiMAP 614460
- UCT-ADU LepiMAP; Pine Valley; 17/02/2017; Kate Braun; LepiMAP 615935

- UCT-ADU LepiMAP; Pine Valley; 06/02/2017; Kate Braun; LepiMAP 614944



- UCT-ADU LepiMAP; Pine Valley; 15/10/2017; Kate Braun; LepiMAP 633119
- UCT-ADU LepiMAP; Pine Valley; 09/11/2017; Kate Braun; LepiMAP 634479

Nolidae: Eariadinae

Earias biplaga Walker, 1866
Malolotja and Mlawula Checklists
(*Earias citrina*)

- UCT-ADU LepiMAP; Pine Valley; 17/03/2017; Kate Braun; LepiMAP 618174
- UCT-ADU LepiMAP; Pine Valley; 01/02/2017; Kate Braun; LepiMAP 614278
- UCT-ADU LepiMAP; Pine Valley; 18/04/2017; Kate Braun; LepiMAP 621861
- UCT-ADU LepiMAP; Mlawula; 27/12/2015; Kate Braun; LepiMAP 586935
- UCT-ADU LepiMAP; Mlawula; 23/03/2017; Kate Braun; LepiMAP 619017
- UCT-ADU LepiMAP; Pine Valley; 22/05/2017; Kate Braun; LepiMAP 626416
- UCT-ADU LepiMAP; Mlawula; 24/03/2017; Kate Braun; LepiMAP 619046



Earias cupreoviridis (Walker, 1862)

Malolotja and Mlawula Checklists

- UCT-ADU LepiMAP; Pine Valley; 26/01/2017; Kate Braun; LepiMAP 613558
- UCT-ADU LepiMAP; Pine Valley; 09/11/2017; Kate Braun; LepiMAP 634502
- UCT-ADU LepiMAP; Pine Valley; 10/12/2017; Kate Braun; LepiMAP 635806
- UCT-ADU LepiMAP; Pine Valley; 12/01/2018; Kate Braun; LepiMAP 638934



Earias insulana (Boisduval, 1833)

Malolotja and Mlawula Checklists

- UCT-ADU LepiMAP; Pine Valley; 29/03/2017; Kate Braun; LepiMAP 619384
- UCT-ADU LepiMAP; Pine Valley; 02/05/2018; Kate Braun; LepiMAP 647098
- UCT-ADU LepiMAP; Pine Valley; 02/04/2018; Kate Braun; LepiMAP 644832
- UCT-ADU LepiMAP; Pine Valley; 14/01/2018; Kate Braun; LepiMAP 639143
- UCT-ADU LepiMAP; Pine Valley; 27/05/2017; Kate Braun; LepiMAP 626458
- UCT-ADU LepiMAP; Pine Valley; 19/04/2017; Kate Braun; LepiMAP 621939
- UCT-ADU LepiMAP; Pine Valley; 03/04/2017; Kate Braun; LepiMAP 620125
- UCT-ADU LepiMAP; Pine Valley; 11/03/2017; Kate Braun; LepiMAP 617623
- UCT-ADU LepiMAP; Mlawula; 25/03/2017; Kate Braun; LepiMAP 619142
- UCT-ADU LepiMAP; Pine Valley; 06/04/2017; Kate Braun; LepiMAP 620355



Nolidae: Nolinae

Meganola bipartita (van Son, 1933)

UCT-ADU LepiMap

- UCT-ADU LepiMAP; Pine Valley; 20/04/2017; Kate Braun; LepiMAP 622006
- UCT-ADU LepiMAP; Pine Valley; 29/01/2017; Kate Braun; LepiMAP 613897
- UCT-ADU LepiMAP; Pine Valley; 15/02/2017; Kate Braun; LepiMAP 615682
- UCT-ADU LepiMAP; Pine Valley; 11/03/2017; Kate Braun; LepiMAP 617634



Meganola leucalea (Hampson, 1907)

Malolotja and Mlawula Checklists
(*Nola leucalea*)

***Meganola* sp.**

UCT-ADU LepiMap

- UCT-ADU LepiMAP; Pine Valley; 13/08/2017; Kate Braun; LepiMAP 630020



- UCT-ADU LepiMAP; Pine Valley; 10/02/2018; Kate Braun; LepiMAP 640596



- UCT-ADU LepiMAP; Pine Valley; 12/11/2017; Kate Braun; LepiMAP 634714



- UCT-ADU LepiMAP; Pine Valley; 09/12/2017; Kate Braun; LepiMAP 635774



Nola barbertonensis (van Son, 1933)
Malolotja and Mlawula Checklists
(*Celama barbertonensis*)

Nola melanoscelis (Hampson, 1914)
Malolotja and Mlawula Checklists
(*Celama melanocelis*)

- UCT-ADU LepiMAP; Pine Valley; 31/01/2017; Kate Braun; LepiMAP 614220
- UCT-ADU LepiMAP; Pine Valley; 04/02/2017; Kate Braun; LepiMAP 614631
- UCT-ADU LepiMAP; Pine Valley; 03/04/2017; Kate Braun; LepiMAP 620128
- UCT-ADU LepiMAP; Pine Valley; 22/04/2017; Kate Braun; LepiMAP 622322
- UCT-ADU LepiMAP; Pine Valley; 02/05/2017; Kate Braun; LepiMAP 626379

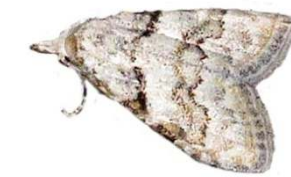


Nola phaeocraspis (Hampson, 1909)
UCT-ADU LepiMAP

- UCT-ADU LepiMAP; Mlawula; 05/01/2018; Kate Braun; LepiMAP 638908
- UCT-ADU LepiMAP; Pine Valley; 23/12/2017; Kate Braun; LepiMAP 636802
- UCT-ADU LepiMAP; Mlawula; 05/01/2018; Kate Braun; LepiMAP 638894
- UCT-ADU LepiMAP; Pine Valley; 14/01/2018; Kate Braun; LepiMAP 639146

Nola sokotrensis vansoni Hacker, 2012
Afromoths: Schintlmeister & Witt (2015)

- UCT-ADU LepiMAP; Pine Valley; 16/08/2017; Kate Braun; LepiMAP 630302
- UCT-ADU LepiMAP; Pine Valley; 09/04/2018; Kate Braun; LepiMAP 645314
- UCT-ADU LepiMAP; Pine Valley; 24/01/2018; Kate Braun; LepiMAP 639734
- UCT-ADU LepiMAP; Pine Valley; 19/01/2018; Kate Braun; LepiMAP 639470
- UCT-ADU LepiMAP; Pine Valley; 12/01/2018; Kate Braun; LepiMAP 638952
- UCT-ADU LepiMAP; Pine Valley; 16/02/2017; Kate Braun; LepiMAP 615764
- UCT-ADU LepiMAP; Pine Valley; 24/12/2017; Kate Braun; LepiMAP 636916
- UCT-ADU LepiMAP; Pine Valley; 02/05/2018; Kate Braun; LepiMAP 647103
- UCT-ADU LepiMAP; Pine Valley; 12/10/2017; Kate Braun; LepiMAP 632795
- UCT-ADU LepiMAP; Pine Valley; 12/04/2017; Kate Braun; LepiMAP 620837
- UCT-ADU LepiMAP; Pine Valley; 04/04/2017; Kate Braun; LepiMAP 620235
- UCT-ADU LepiMAP; Pine Valley; 24/01/2017; Kate Braun; LepiMAP 613213
- UCT-ADU LepiMAP; Mlawula; 05/01/2018; Kate Braun; LepiMAP 638904
- UCT-ADU LepiMAP; Mlawula; 23/03/2017; Kate Braun; LepiMAP 618987
- UCT-ADU LepiMAP; Mlawula; 18/01/2017; Kate Braun; LepiMAP 612765
- UCT-ADU LepiMAP; Pine Valley; 05/04/2017; Kate Braun; LepiMAP 620288
- UCT-ADU LepiMAP; Pine Valley; 18/04/2017; Kate Braun; LepiMAP 621835



Nola tineoides (Walker, 1858)
Malolotja and Mlawula Checklists
(*Celama melanocelis*)

- UCT-ADU LepiMAP; Pine Valley; 06/10/2015; Kate Braun; LepiMAP 579346
- UCT-ADU LepiMAP; Malolotja; 02/02/2017; Kate Braun; LepiMAP 614323
- UCT-ADU LepiMAP; Pine Valley; 18/04/2017; Kate Braun; LepiMAP 621817

- UCT-ADU LepiMAP; Pine Valley; 22/05/2017; Kate Braun; LepiMAP 626419
- UCT-ADU LepiMAP; Pine Valley; 27/05/2017; Kate Braun; LepiMAP 626463
- UCT-ADU LepiMAP; Pine Valley; 13/08/2017; Kate Braun; LepiMAP 630017
- UCT-ADU LepiMAP; Pine Valley; 15/08/2017; Kate Braun; LepiMAP 630256
- UCT-ADU LepiMAP; Pine Valley; 09/11/2017; Kate Braun; LepiMAP 634478
- UCT-ADU LepiMAP; Pine Valley; 15/11/2017; Kate Braun; LepiMAP 635129
- UCT-ADU LepiMAP; Pine Valley; 27/12/2017; Kate Braun; LepiMAP 637274
- UCT-ADU LepiMAP; Pine Valley; 18/03/2018; Kate Braun; LepiMAP 643178
- UCT-ADU LepiMAP; Pine Valley; 01/10/2018; Kate Braun; LepiMAP 659307



Nola sp.

UCT-ADU LepiMap

- UCT-ADU LepiMAP; Pine Valley; 06/03/2017; Kate Braun; LepiMAP 617399



- UCT-ADU LepiMAP; Mlawula; 06/01/2018; Kate Braun; LepiMAP 638925
- UCT-ADU LepiMAP; Malolotja; 07/04/2018; Kate Braun; LepiMAP 645124
- UCT-ADU LepiMAP; Pine Valley; 09/04/2018; Kate Braun; LepiMAP 645327
- UCT-ADU LepiMAP; Pine Valley; 29/09/2018; Kate Braun; LepiMAP 658909

Nolidae: Westermanniinae

Negeta luminosa (Walker, 1858)
UCT-ADU LepiMAP

- UCT-ADU LepiMAP; Mlawula; 19/01/2017; Kate Braun; LepiMAP 612814



Westermanniinae Hampson, 1902
Malolotja and Mlawula Checklists

Notodontidae: Cerurinae

Cerurella natalensis Kiriakoff, 1962
Afromoths: Schintlmeister & Witt (2015)



*

Hampsonita esmeralda (Hampson, 1910)
Malolotja and Mlawula Checklists;
Afromoths: Schintlmeister & Witt (2015)

Notocerura spiritalis (Distant, 1899)
Afromoths: Schintlmeister & Witt (2015)



*

Pararethona hierax (Distant, 1897)
Malolotja and Mlawula Checklists;
Afromoths: Schintlmeister & Witt (2015)



*

Pseudorethona albicans (Walker, 1855)
Malolotja and Mlawula Checklists
• UCT-ADU LepiMAP; Pine Valley; 31/01/2017; Kate Braun; LepiMAP 614176



Notodontidae: Dicranurinae

Afroplitis sulaki Schintlmeister & Witt, 2015
Afromoths: Schintlmeister & Witt (2015)

Amyops ingens Karsch, 1895
Afromoths: Schintlmeister & Witt (2015)
• UCT-ADU LepiMAP; Mlawula; 30/01/2006; Roland H; LepiMAP 19756
• UCT-ADU LepiMAP; Mbuluzi Game Reserve; 02/02/2006; Roland H; LepiMAP 556560
• ISpot; Mbuluzi Game Reserve; 03/02/2006; WolfRoland; ISpot 629274



Atrasana postica Walker, 1856
Malolotja and Mlawula Checklists;

Afromoths: Schintlmeister & Witt (2015)



*

Atrasana uncifera (Hampson, 1910)
Afromoths: Schintlmeister & Witt (2015)

Catochria postflava Kiriakoff, 1955
Afromoths: Schintlmeister & Witt (2015)

Chlorocallope calliope (Hampson, 1910)
Afromoths: Schintlmeister & Witt (2015)

Desmeocraera basalis Distant, 1899
Afromoths: Schintlmeister & Witt (2015)

Desmeocraera bethunebakeri
Schintlmeister & Witt, 2015
Afromoths: Schintlmeister & Witt (2015)

Desmeocraera distanti Schintlmeister & Witt, 2015
Afromoths: Schintlmeister & Witt (2015)
• AfroMoths; Muti Muti; 19/12/1992; N J Duke;

Desmeocraera hattinghorum
Schintlmeister & Witt, 2015
Afromoths: Schintlmeister & Witt (2015)

Desmeocraera interpellatrix interpellatrix
(Wallengren, 1860)
UCT-ADU LepiMap; Afromoths:
Schintlmeister & Witt (2015)
(*Desmeocraera interpellatrix*)
• UCT-ADU LepiMAP; Pine Valley; 01/02/2017; Kate Braun; LepiMAP 614273



Desmeocraera latex (Druce, 1901)
Afromoths: Schintlmeister & Witt (2015)

Desmeocraera nugatrix Felder, 1874
Malolotja and Mlawula Checklists;
Afromoths: Schintlmeister & Witt (2015)
(*Desmeocraera griseoviridis*)

Desmeocraera octoginta octoginta
(Hampson, 1910)
Afromoths: Schintlmeister & Witt (2015)

Desmeocraera oliva Kiriakoff, 1968
Afromoths: Schintlmeister & Witt (2015)

Desmeocraera platti platti Janse, 1920
Malolotja and Mlawula Checklists
(*Desmeocraera platti*)

Desmeocraera vemalis Distant, 1897
Afromoths: Schintlmeister & Witt (2015)

Desmeocraera sp.
UCT-ADU LepiMap

• UCT-ADU LepiMAP; Pine Valley; 31/12/2017; Kate Braun; LepiMAP 667134



Stauropida griseola Kiriakoff, 1962
Afromoths: Kovtunovich & Ustjuzhanin (2012)

Notodontidae: Notodontinae

Bilulua atricollis Kiriakoff, 1954
Afromoths: Schintlmeister & Witt (2015)

Epicerura steniptera (Hampson, 1910)
Afromoths: Schintlmeister & Witt (2015)

Helga cinerea (Janse, 1920)
Afromoths: Schintlmeister & Witt (2015)

Leptolepida varians (Kiriakoff, 1962)
Afromoths: Schintlmeister & Witt (2015)

Psalisodes atrifasciata Hampson, 1910
Afromoths: Schintlmeister & Witt (2015)

Psalisodes discalis (Hampson, 1910)
Afromoths: Schintlmeister & Witt (2015)

Rhenea mediata (Walker, 1865)
Malolotja and Mlawula Checklists;
Afromoths: Schintlmeister & Witt (2015)



*

Rosinella rosinaria (Hampson, 1910)
Afromoths: Schintlmeister & Witt (2015)



*

Sarimarais bicolor (Distant, 1899)
Malolotja and Mlawula Checklists;
Afromoths: Epstein & Brown (2003)



*

Stemmatophalera curvilinea (Swinhoe, 1907)

Malolotja and Mlawula Checklists;
Afromoths: Kovtunovich & Ustjuzhanin (2009)
(*Acrasiella curvilinea*)

Stemmatophalera persimilis (Hampson, 1910)

Afromoths: Kovtunovich & Ustjuzhanin (2012)

Stemmatophalera sjostedti Aurivillius, 1910

Afromoths: Kovtunovich & Ustjuzhanin (2012)

Stenostaura janssei (Kiriakoff, 1970)

Afromoths: Kovtunovich & Ustjuzhanin (2012)

Notodontidae: Phalerinae

Antheua aurifodinae (Distant, 1902)

Malolotja and Mlawula Checklists;
Afromoths: Schintlmeister & Witt (2015)

Antheua simplex Walker, 1855

Malolotja and Mlawula Checklists

- UCT-ADU LepiMAP; Pine Valley; 27/12/2017; Kate Braun; LepiMAP 637280



Eutimia marpissa Wallengren, 1858

Malolotja and Mlawula Checklists;
Afromoths: Schintlmeister & Witt (2015)
(*Antheua marpissa*, *Eutimia anodonta*)

Eutimia spurcata (Walker, 1865)

Afromoths: Schintlmeister & Witt (2015)

Phalera imitata Druce, 1896

Afromoths: Schintlmeister & Witt (2015)



*

Phalera lydenburgi Distant, 1899

Afromoths: Schintlmeister & Witt (2015)



*

Polienus capillatus (Wallengren, 1875)

Malolotja and Mlawula Checklists

- UCT-ADU LepiMAP; Pine Valley; 13/11/2017; Kate Braun; LepiMAP 634795
- UCT-ADU LepiMAP; Pine Valley; 14/03/2018; Kate Braun; LepiMAP 642788
- UCT-ADU LepiMAP; Pine Valley; 30/12/2016; Kate Braun; LepiMAP 611540



Rigema ornata Walker, 1865

Malolotja and Mlawula Checklists;
Afromoths: Schintlmeister & Witt (2015)
(*Antheua ornata*)

- UCT-ADU LepiMAP; Pine Valley; 28/10/2018; Kate Braun; LepiMAP 661058



Rigema woerdeni (Snellen, 1872)

Malolotja and Mlawula Checklists
(*Antheua woerdeni*)

Notodontidae: Ptilodontidae

Batempa buceros (Kiriakoff, 1971)

Afromoths: Schintlmeister & Witt (2015)

Batempa mutabilis Schintlmeister & Witt, 2015

Afromoths: Schintlmeister & Witt (2015)

Eurystauridia iphis Kiriakoff, 1968

Afromoths: Schintlmeister & Witt (2015)

Notodontidae: Pygaerinae

Clostera lentisignata (Hampson, 1910)

Malolotja and Mlawula Checklists;
Afromoths: Schintlmeister & Witt (2015)

Clostera violacearia (Janse, 1920)

Afromoths: Schintlmeister & Witt (2015)

Janthinisca joannoui Schintlmeister & Witt, 2015

Afromoths: Schintlmeister & Witt (2015)

Peratodonta heterogyna (Hampson, 1910)

Afromoths: Schintlmeister & Witt (2015)

Notodontidae: Scranciinae

Archistilbia mlawula Schintlmeister & Witt, 2015

Afromoths: Schintlmeister & Witt (2015)

- AfroMoths; Mlawula; 05/02/1995; N J Duke;

Postscrancia discommma (Jordan, 1916)

Afromoths: Schintlmeister & Witt (2015)

Thacona brunnescens (Gaede, 1928)

Afromoths: Kovtunovich & Ustjuzhanin (2012)

Thacona stictica (Hampson, 1910)

Afromoths: Kovtunovich & Ustjuzhanin (2012)

Notodontidae: Thaumetopoeinae

Anaphe reticulata Walker, 1855

UCT-ADU LepiMap

- UCT-ADU LepiMAP; Pine Valley; 31/12/2016; Kate Braun; LepiMAP 611549
- UCT-ADU LepiMAP; Pine Valley; 17/12/2017; Kate Braun; LepiMAP 636424
- UCT-ADU LepiMAP; Pine Valley; 14/01/2018; Kate Braun; LepiMAP 639161
- UCT-ADU LepiMAP; Mlawula; 18/02/2016; Kate Braun; LepiMAP 588735
- UCT-ADU LepiMAP; Mlawula; 18/01/2017; Kate Braun; LepiMAP 612782
- iNaturalist; Mlawula; 18/01/2017; Kate Braun; iNaturalist 11249473
- UCT-ADU LepiMAP; Pine Valley; 27/12/2006; Kate Braun; LepiMAP 10780

