

Preliminary Swaziland Moths Checklist - PROVISIONAL - January 2019

Part 4: Microlepidoptera

Adeloidea, Alucitoidea, Cossidae, Gelechioidea, Gracillarioidea, Hepialoidea, Hyblaeoidea, Pterophoroidea, Pyraloidea, Thyridoidea, Tineoidea, Tortricoidea, Yponomeutoidea, Zygaenoidea

Adeloidea

Adelidae: Nematopogoninae

Ceromitia wahlbergi Zeller, 1852

UCT-ADU LepiMap

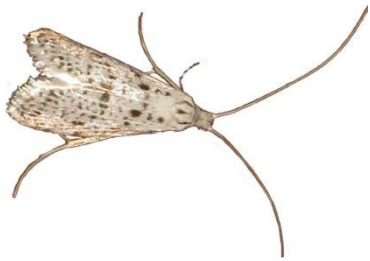
- UCT-ADU LepiMAP; Pine Valley; 28/01/2017; Kate Braun; LepiMAP 613568
- UCT-ADU LepiMAP; Pine Valley; 24/12/2017; Kate Braun; LepiMAP 636910
- UCT-ADU LepiMAP; Pine Valley; 01/02/2018; Kate Braun; LepiMAP 640107



Ceromitia sp. 1

UCT-ADU LepiMap

- UCT-ADU LepiMAP; Pine Valley; 22/01/2017; Kate Braun; LepiMAP 613090



Ceromitia sp. 2

UCT-ADU LepiMap

- UCT-ADU LepiMAP; Pine Valley; 17/01/2017; Kate Braun; LepiMAP 612622



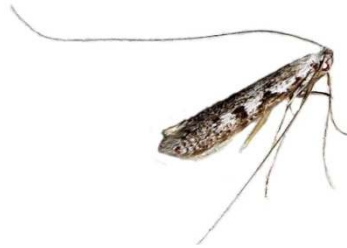
Ceromitia sp. 3

UCT-ADU LepiMap

- UCT-ADU LepiMAP; Pine Valley; 27/05/2017; Kate Braun; LepiMAP 622336

Braun; LepiMAP 626449

- UCT-ADU LepiMAP; Pine Valley; 22/04/2017; Kate Braun; LepiMAP 622336



Ceromitia sp. 4

UCT-ADU LepiMap

- UCT-ADU LepiMAP; Pine Valley; 21/12/2017; Kate Braun; LepiMAP 636636



Alucitoidea

Alucitidae

Alucita phanerarcha (Meyrick, 1924)

UCT-ADU LepiMap

- UCT-ADU LepiMAP; Pine Valley; 27/11/2018; Kate Braun; LepiMAP 663375



Alucita spicifera (Meyrick, 1911)

UCT-ADU LepiMAP

- UCT-ADU LepiMAP; Pine Valley; 31/12/2018; Kate Braun; LepiMAP 667107



Alucita sp.

UCT-ADU LepiMAP

- UCT-ADU LepiMAP; Pine Valley; 05/04/2018; Kate Braun; LepiMAP 644866



Cossoidea

Brachodidae: Brachodinae

Archaeotychia albiciliata (Walsingham, 1891)

Afromoths: Kallies (2016)

Brachodidae: Phycodinae

Nigilgia albitogata (Walsingham, 1891)

Afromoths: Kallies (2016)

Nigilgia eucallynta (Meyrick, 1937)

Afromoths: Kallies (2016)

Nigilgia mochlophanes (Meyrick, 1921)

Afromoths: Kallies (2016)

Cossidae: Cossinae

Macrocoossus toluinus (Druce, 1887)

Afromoths: Yakovlev & Witt (2016)



*

Rethona albifasciata (Hampson, 1910)
Afromoths: Mey (2016)

Cossidae: Zeuzerinae

Aethalopteryx obscurascens (Gaede, 1930)

Afromoths: Yakovlev & Witt (2016)
• AfroMoths; Nsoko; 23/01/2007; J P Rudloff;

Aethalopteryx obsolete (Gaede, 1930)
Afromoths: Borth, Ivinskis, Saldaitis & Yakovlev (2011)

Aethalopteryx rudloffii Yakovlev, 2011
Afromoths: Yakovlev (2011)

Aethalopteryx tristis (Gaede, 1915)
Afromoths: Yakovlev (2011)

Azygophleps asylas (Cramer, 1777)
UCT-ADU LepiMap

• UCT-ADU LepiMAP; Mlawula; 19/01/2017; Kate Braun; LepiMAP 612805



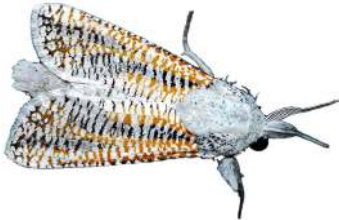
Azygophleps boisduvalii
(Herrich-Schäffer, 1854)

UCT-ADU LepiMap
• UCT-ADU LepiMAP; Pine Valley; 01/12/2018; Kate Braun; LepiMAP 663774



Azygophleps inclusa (Walker, 1856)
Malolotja and Mlawula Checklists

• UCT-ADU LepiMAP; Malolotja; 20/03/2010; Webb P.; LepiMAP 11935



Azygophleps leopardina Distant, 1902
Afromoths: Mey (2016)



Eulophonotus hyalinipennis (Strand, 1910)

Project Noah (Photos by Tina Petterson)
• Project Noah; Mlawula; 31/12/2013; Tina Petterson; PN 140016145



Oreocossus kilimanjarensis (Holland, 1892)

Malolotja and Mlawula Checklists

Strigocossus capensis (Walker, 1856)
Malolotja and Mlawula Checklists
(*Xylocossus capensis*)



Strigocossus crassa (Drury, 1782)
Afromoths: Yakovlev & Witt (2016)

Strigocossus elephas Yakovlev sp. nov.
Afromoths: Yakovlev & Murphy (2013)

• UCT-ADU LepiMAP; Mlawula; 11/11/2013; Len de Beer, Jemma de Beer; LepiMAP 39207
• UCT-ADU LepiMAP; Mlawula; 11/11/2013; Len de Beer, Jemma de Beer; LepiMAP 39210



Metarbelidae

(not identified)
UCT-ADU LepiMap

• UCT-ADU LepiMAP; Mlawula; 18/01/2017; Kate Braun; LepiMAP 612647
• UCT-ADU LepiMAP; Mlawula; 18/01/2017; Kate Braun; LepiMAP 612648



Arbelodes albitorquata (Hampson, 1910)

Afromoths
• TMSA; Malolotja; 16/11/1999; N J Duke;

***Arbelodes* sp.**
UCT-ADU LepiMAP
• UCT-ADU LepiMAP; Pine Valley; 13/02/2018; Kate Braun; LepiMAP 640822



Salagena tessellata Distant, 1897
Project Noah (Photos by Tina Petterson)

• AfroMoths; Mlawula; 05/02/1995; N J Duke;
• Project Noah; Mlawula; 11/11/2013; Tina Petterson; PN 83136002



Salagena transversa Walker, 1865
UCT-ADU LepiMap

• UCT-ADU LepiMAP; Pine Valley; 16/10/2017; Kate Braun; LepiMAP 633175
• UCT-ADU LepiMAP; Pine Valley; 18/11/2016; Kate Braun; LepiMAP 609638



Teragra guttifera Hampson, 1910
UCT-ADU LepiMap

• UCT-ADU LepiMAP; Pine Valley; 06/11/2017; Kate Braun; LepiMAP 634307
• UCT-ADU LepiMAP; Pine Valley; 27/10/2018; Kate Braun; LepiMAP 660934
• UCT-ADU LepiMAP; Pine Valley; 10/10/2018; Kate Braun; LepiMAP 660197
• UCT-ADU LepiMAP; Pine Valley; 13/11/2017; Kate Braun; LepiMAP 634787
• UCT-ADU LepiMAP; Pine Valley; 23/01/2018; Kate Braun; LepiMAP 639650



Sesiidae: Sesiinae: Paranthrenini

Sura xylocopiformis Walker, 1856
UCT-ADU LepiMAP

- iNaturalist; Malolotja; 30/11/2005; Kate Braun; iNaturalist 11027199
- UCT-ADU LepiMAP; Malolotja; 30/11/2005; Kate Braun; LepiMAP 572260



Thyranthrene metazonata Hampson, 1919

- Afromoths: TMSA
- AfroMoths; Sidwashini; 25/04/1991; N J Duke;
 - AfroMoths; Sidwashini; 10/03/1994; N J Duke; TMSA

Sesiidae: Sesiinae: Sesiini

Aenigmia albiapex Bartsch, 2016
Afromoths: D'Abrera (1987)

Cabomina chalypsa (Hampson, 1919)
Afromoths: Razowski (2006b)

Cabomina ruthmuelleriae Bartsch, 2016
Afromoths: Razowski (2015)

- AfroMoths; Ngwempisi; 31/01/2015; D Bartsch ;

Felderiola candescens (Felder & Felder, 1874)
Malolotja and Mlawula Checklists
(*Monopetalotaxis candescens*)

Homogyna ignivittata Hampson, 1919
Afromoths: Razowski (2008)

Microsesia nana Bartsch, 2015
Afromoths: Razowski (2006a)

Sesiidae: Sesiinae: Synanthedonini

Crinipus marisa (Druce, 1899)
Afromoths: Razowski (2008)

- AfroMoths; Bulunga Mountains; 20/04/1992; N J Duke; TMSA

Synanthedon xanthopasta Hampson, 1919
Afromoths: TMSA
(*Chamanthedon xanthopasta*)

- AfroMoths; Millers Falls, Mbabane; 15/02/1996; N J Duke; BNHM
- AfroMoths; Sidwashini; 17/03/1997; N J Duke;

Gelechioidea

Cosmopterigidae: Cosmopteriginae

Cosmopterix attenuatella (Walker, 1864)
Afromoths: Koster (2016)

Cosmopterix emmolybda Meyrick, 1914
Afromoths: Koster (2016)

Depressariidae: Ethmiinae

Ethmia circumdatellus (Walker, 1863)
UCT-ADU LepiMAP

- UCT-ADU LepiMAP; Pine Valley; 17/02/2017; Kate Braun; LepiMAP 615941
- UCT-ADU LepiMAP; Pine Valley; 13/11/2017; Kate Braun; LepiMAP 634805
- UCT-ADU LepiMAP; Pine Valley; 31/01/2017; Kate Braun; LepiMAP 614180
- UCT-ADU LepiMAP; Pine Valley; 29/12/2016; Kate Braun; LepiMAP 611421
- UCT-ADU LepiMAP; Nisela; 18/12/2008; Paasikunnas Timo; Alina Kallio; LepiMAP 555978
- UCT-ADU LepiMAP; Pine Valley; 21/12/2017; Kate Braun; LepiMAP 636651
- UCT-ADU LepiMAP; Pine Valley; 30/01/2017; Kate Braun; LepiMAP 614120



Ethmia sabiella (Felder & Rogenhofer, 1875)
Malolotja and Mlawula Checklists



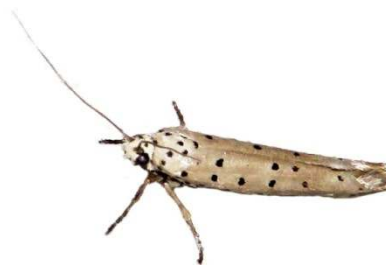
Ethmia sp. 1
UCT-ADU LepiMAP

- UCT-ADU LepiMAP; Pine Valley; 29/01/2017; Kate Braun; LepiMAP 613926
- UCT-ADU LepiMAP; Pine Valley; 08/04/2017; Kate Braun; LepiMAP 620721



Ethmia sp. 2
UCT-ADU LepiMAP

- UCT-ADU LepiMAP; Pine Valley; 29/09/2017; Kate Braun; LepiMap 632369



Ethmia sp. 3
UCT-ADU LepiMAP

- UCT-ADU LepiMAP; Mlawula; 18/01/2017; Kate Braun; LepiMAP 612670



Gelechiidae: Dichomeridinae

Dichomeris subiridescens (Janse, 1954)
Afromoths: Krüger (2013)

Gelechiidae: Gelechiinae

Amblyphylla lophozancla Janse, 1960
Afromoths: Janse (1954)

Anarsia subfulvescens Meyrick, 1918
Afromoths: Krüger (2001a)

Lecithoceridae: Lecithocerinae

Odites natalensis Walsingham, 1891
UCT-ADU LepiMAP

- UCT-ADU LepiMAP; Pine Valley; 25/02/2017; Kate Braun; LepiMAP 617104
- UCT-ADU LepiMAP; Pine Valley; 29/01/2018; Kate Braun; LepiMAP 639977
- UCT-ADU LepiMAP; Pine Valley; 06/02/2018; Kate Braun; LepiMAP 640370
- UCT-ADU LepiMAP; Pine Valley; 15/11/2017; Kate Braun; LepiMAP 635128
- UCT-ADU LepiMAP; Pine Valley; 29/01/2017; Kate Braun; LepiMAP 613906
- UCT-ADU LepiMAP; Pine Valley; 01/12/2016; Kate Braun; LepiMAP 610457
- UCT-ADU LepiMAP; Pine Valley; 29/11/2016; Kate Braun; LepiMAP 610436
- UCT-ADU LepiMAP; Pine Valley; 08/02/2016; Kate Braun; LepiMAP 587948
- UCT-ADU LepiMAP; Pine Valley; 16/12/2017; Kate Braun; LepiMAP 636317
- UCT-ADU LepiMAP; Pine Valley; 31/01/2017; Kate Braun; LepiMAP 614150



Scythrididae: Scythridinae

Eretmocera laetissima Zeller, 1852
UCT-ADU LepiMAP

- UCT-ADU LepiMAP; Mlawula; 27/12/2014; Kate Braun; LepiMAP 559307



Stathmopodidae: Stathmopodinae

Stathmopoda auriferella (Walker, 1864)

UCT-ADU LepiMAP

- UCT-ADU LepiMAP; Pine Valley; 03/02/2017; Kate Braun; LepiMAP 614603
- UCT-ADU LepiMAP; Pine Valley; 13/08/2017; Kate Braun; LepiMAP 630033
- UCT-ADU LepiMAP; Pine Valley; 12/11/2017; Kate Braun; LepiMAP 634706
- UCT-ADU LepiMAP; Pine Valley; 03/04/2017; Kate Braun; LepiMAP 620144



Stathmopoda crassella Walsingham, 1891

UCT-ADU LepiMAP

- UCT-ADU LepiMAP; Pine Valley; 25/09/2017; Kate Braun; LepiMap 632261
- UCT-ADU LepiMAP; Pine Valley; 14/01/2018; Kate Braun; LepiMAP 639165



Gracillarioidea

Gracillariidae: Phyllocnistinae

Phyllocnistis citrella Stainton, 1856

Afromoths: TMSA

Hepialoidea

Hepialidae

Gorgopis aurifuscata Janse, 1942

Afromoths

- AfroMoths; Malolotja; 04/03/1993; N J Duke;

Gorgopis fuscalis Janse, 1919

Malolotja and Mlawula Checklists

Gorgopis inornata Janse, 1942

Malolotja and Mlawula Checklists

Gorgopis libania (Cramer, 1781)

Malolotja and Mlawula Checklists



*

Hyblaeoidea

Hyblaeidae

Hyblaea fontainei Berio, 1967

Malolotja and Mlawula Checklists

Prodidactidae

Prodidactis mystica (Meyrick, 1918)

Afromoths: Gielis (2003)

Pterophoroidea

Pterophoridae: Agdistinae

Agdistis linnaei Gielis, 2008

Afromoths: Kovtunovich & Ustjuzhanin (2012)

- Kovtunovich & Ustjuzhanin (2012); Mlawula; 15/10/2009; V. Kovtunovich & P. Ustjuzhanin;

Agdistis malleana Arenberger, 1988

Afromoths: Kovtunovich & Ustjuzhanin (2012)

Agdistis toliarensis Bigot, 1986

Afromoths: Gielis (2003)

- Kovtunovich & Ustjuzhanin (2012); Nisela; 06/10/2009; V. Kovtunovich & P. Ustjuzhanin;
- Kovtunovich & Ustjuzhanin (2012); Mlawula; 15/10/2009; V. Kovtunovich & P. Ustjuzhanin;

Agdistis varii Kovtunovich &

Ustjuzhanin, 2009

Afromoths: Kovtunovich & Ustjuzhanin (2012)

- Kovtunovich & Ustjuzhanin (2012); Mlawula; 15/10/2009; V. Kovtunovich & P. Ustjuzhanin;

Pterophoridae: Pterophorinae

(not identified)

UCT-ADU LepiMap

- UCT-ADU LepiMAP; Mlawula; 09/11/2013; de Beer Len ; Jemma de Beer; LepiMAP 39115
- UCT-ADU LepiMAP; Pine Valley; 08/01/2016; Kate Braun; LepiMAP 586997
- UCT-ADU LepiMAP; Pine Valley; 01/12/2016; Kate Braun; LepiMAP 610455



- UCT-ADU LepiMAP; Pine Valley; 23/12/2016; Kate Braun; LepiMAP 611397



- UCT-ADU LepiMAP; Pine Valley; 01/02/2017; Kate Braun; LepiMAP 614256
- UCT-ADU LepiMAP; Malolotja; 02/02/2017; Kate Braun; LepiMAP 614322



Amblyptilia direptalis (Walker, 1864)

UCT-ADU LepiMAP

- UCT-ADU LepiMAP; Pine Valley; 13/03/2018; Kate Braun; LepiMAP 642726



Cosmoclostis brachybela Fletcher D. S., 1947

Afromoths: Kovtunovich & Ustjuzhanin (2012)

- Kovtunovich & Ustjuzhanin (2012); Mlawula; 15/10/2009; V. Kovtunovich & P. Ustjuzhanin;

Crassuncus pacifica (Meyrick, 1911)

Afromoths: Gielis (2003)

(*Hellinsia pacifica*, *Hellinsia pura*)

- Kovtunovich & Ustjuzhanin (2012); Malolotja; 07/12/2011; V. Kovtunovich & P. Ustjuzhanin;
- Kovtunovich & Ustjuzhanin (2012); Mlawula; 06/12/2011; V. Kovtunovich & P. Ustjuzhanin;

Eucapperia bullifera (Meyrick, 1918)

Afromoths: Kovtunovich & Ustjuzhanin (2012)

- Kovtunovich & Ustjuzhanin (2012); Mbabane; 25/09/1990; N J Duke;

Exelastis atomosa (Walsingham, 1885)

Afromoths: Kovtunovich & Ustjuzhanin (2012)

Exelastis crepuscularis (Meyrick, 1909)

Afromoths: Kovtunovich & Ustjuzhanin (2012)

- Kovtunovich & Ustjuzhanin (2012); Malolotja; 07/12/2011; V. Kovtunovich & P. Ustjuzhanin;

Exelastis montischristi (Walsingham, 1897)

Afromoths: Gielis (2003)

- Kovtunovich & Ustjuzhanin (2012); Mlawula; 25/11/2010; V. Kovtunovich & A. Sochivko;
- Kovtunovich & Ustjuzhanin (2012); Mlawula;

15/10/2009; V. Kovtunovich & P. Ustjuzhanin;

Exelastis pumilio (Zeller, 1873)

Afromoths: Kovtunovich & Ustjuzhanin (2012)

Exelastis vuattouxi Bigot, 1970

Afromoths: Kovtunovich & Ustjuzhanin (2012)

- Kovtunovich & Ustjuzhanin (2012); Malolotja; 07/12/2011; V. Kovtunovich & P. Ustjuzhanin;

Gypsochares astragalotes (Meyrick, 1909)

Afromoths: Kovtunovich & Ustjuzhanin (2012)

- Kovtunovich & Ustjuzhanin (2012); Malolotja; 07/12/2011; V. Kovtunovich & P. Ustjuzhanin;

Lantanophaga pusillidactylus (Walker, 1864)

Afromoths: Kovtunovich & Ustjuzhanin (2012)

Marasmarcha bonaespei (Walsingham, 1881)

Afromoths: Kovtunovich & Ustjuzhanin (2012)

- Kovtunovich & Ustjuzhanin (2012); Mlawula; 25/11/2010; V. Kovtunovich & A. Sochivko;
- Kovtunovich & Ustjuzhanin (2012); Mlawula; 06/12/2011; V. Kovtunovich & P. Ustjuzhanin;
- Kovtunovich & Ustjuzhanin (2012); Malolotja; 07/12/2011; V. Kovtunovich & P. Ustjuzhanin;

Marasmarcha verax (Meyrick, 1909)

Afromoths: Kovtunovich & Ustjuzhanin (2012)

- Kovtunovich & Ustjuzhanin (2012); Malolotja; 07/12/2011; V. Kovtunovich & P. Ustjuzhanin;
- Kovtunovich & Ustjuzhanin (2012); Malolotja; 04/12/2011; G. Bassi;

Megalorhipida leptomeris (Meyrick, 1886)

Afromoths: Kovtunovich & Ustjuzhanin (2012)

- Kovtunovich & Ustjuzhanin (2012); Mlawula; 25/11/2010; V. Kovtunovich & P. Ustjuzhanin;
- Kovtunovich & Ustjuzhanin (2012); Mlawula; 15/10/2009; V. Kovtunovich & P. Ustjuzhanin;
- Kovtunovich & Ustjuzhanin (2012); Nisela; 16/10/2009; V. Kovtunovich & P. Ustjuzhanin;

Megalorhipida leucodactylus (Fabricius, 1794)

Afromoths: Gielis (2003)

- Kovtunovich & Ustjuzhanin (2012); Mlawula; 15/10/2009; V. Kovtunovich & P. Ustjuzhanin;

Megalorhipida prolai Gibeaux, 1994

Afromoths: Gielis (2003)

- Kovtunovich & Ustjuzhanin (2012); Mlawula; 25/11/2010; V. Kovtunovich & A. Sochivko;

Megalorhipida subtilis (Rebel, 1907)

Afromoths: Kovtunovich & Ustjuzhanin (2012)

- Kovtunovich & Ustjuzhanin (2012); Mlawula; 25/11/2010; V. Kovtunovich & A. Sochivko;

Megalorhipida vivax (Meyrick, 1909)

Afromoths: Kovtunovich & Ustjuzhanin (2012)

- Kovtunovich & Ustjuzhanin (2012); Malolotja; 07/12/2011; V. Kovtunovich & P. Ustjuzhanin;

Platyptilia farfarellus Zeller, 1867

Afromoths: Kovtunovich & Ustjuzhanin

(2012)

- Kovtunovich & Ustjuzhanin (2012); Malolotja; 07/12/2011; V. Kovtunovich & P. Ustjuzhanin;

Platyptilia longalis (Walker, 1864)

Afromoths: Kovtunovich & Ustjuzhanin (2012)

- Kovtunovich & Ustjuzhanin (2012); Malolotja; 30/11/1992; N J Duke;
- Kovtunovich & Ustjuzhanin (2012); Malolotja; 18/09/1993; N J Duke;

Platyptilia sabius (Felder & Rogenhofer, 1875)

Afromoths: Kovtunovich & Ustjuzhanin (2012)

- Kovtunovich & Ustjuzhanin (2012); Malolotja; 07/12/2011; V. Kovtunovich & P. Ustjuzhanin;

Pseudoxyptilus secutor (Meyrick, 1911)

Afromoths: Kovtunovich & Ustjuzhanin (2012)

- Kovtunovich & Ustjuzhanin (2012); Malolotja; 07/12/2011; V. Kovtunovich & P. Ustjuzhanin;

Sphenarches anisodactylus (Walker, 1864)

Afromoths: Martin (1958)

Stenodacma wahlbergi (Zeller, 1852)

Afromoths: Geertsema (1971)

- Kovtunovich & Ustjuzhanin (2012); Malolotja; 07/12/2011; V. Kovtunovich & P. Ustjuzhanin;

Stenoptilia johnistella Ustjuzhanin & Kovtunovich, 2010

Afromoths: Pinhey (1975)

- Kovtunovich & Ustjuzhanin (2012); Malolotja; 07/12/2011; V. Kovtunovich & P. Ustjuzhanin;

Stenoptilodes taprobanes (Felder & Rogenhofer, 1875)

Afromoths: Pinhey (1975)

- Kovtunovich & Ustjuzhanin (2012); Malolotja; 07/12/2011; V. Kovtunovich & P. Ustjuzhanin;
- Kovtunovich & Ustjuzhanin (2012); Nisela; 16/10/2009; V. Kovtunovich & P. Ustjuzhanin;

Titanoptilus stenodactylus (Fletcher D. S., 1911)

Afromoths: Naumann (2008)

- Kovtunovich & Ustjuzhanin (2012); Nisela; 16/10/2009; V. Kovtunovich & P. Ustjuzhanin;

Walsinghamiella orichalcias (Meyrick, 1916)

Afromoths: Naumann (2008)

- Kovtunovich & Ustjuzhanin (2012); Mpisi; 15/03/1995; N J Duke;

Walsinghamiella prolai (Gibeaux, 1994)

Afromoths: Bartsch (2016)

- Kovtunovich & Ustjuzhanin (2012); Malolotja; 07/12/2011; V. Kovtunovich & P. Ustjuzhanin;

Xyroptila zambesi Kovtunovich & Ustjuzhanin, 2006

Afromoths: Bartsch (2016)

- Kovtunovich & Ustjuzhanin (2012); Mlawula; 25/11/2010; V. Kovtunovich & A. Sochivko;

Pyraloidea

Crambidae: Acentropinae

Parapoynx stagnalis (Zeller, 1852)

UCT-ADU LepiMAP

- UCT-ADU LepiMAP; Mlawula; 29/06/2017; Kate Braun; LepiMAP 628728



Crambidae: Crambinae

Ancylolomia chrysographellus

(Kollar, 1844)

UCT-ADU LepiMAP

- UCT-ADU LepiMAP; Malolotja; 02/02/2017; Kate Braun; LepiMAP 614340
- UCT-ADU LepiMAP; Pine Valley; 01/12/2016; Kate Braun; LepiMAP 610461
- UCT-ADU LepiMAP; Pine Valley; 04/02/2017; Kate Braun; LepiMAP 614611



Ancylolomia pectinifera Hampson, 1910

UCT-ADU LepiMAP

- UCT-ADU LepiMAP; Pine Valley; 16/12/2017; Kate Braun; LepiMAP 636309
- UCT-ADU LepiMAP; Pine Valley; 17/12/2017; Kate Braun; LepiMAP 636438



Ancylolomia prepiella Hampson, 1919

UCT-ADU LepiMAP

- UCT-ADU LepiMAP; Pine Valley; 27/12/2016; Kate Braun; LepiMAP 611410
- UCT-ADU LepiMAP; Pine Valley; 14/01/2018; Kate Braun; LepiMAP 639169
- UCT-ADU LepiMAP; Pine Valley; 23/12/2017; Kate Braun; LepiMAP 636818
- UCT-ADU LepiMAP; Pine Valley; 11/01/2017; Kate Braun; LepiMAP 612494
- UCT-ADU LepiMAP; Pine Valley; 01/12/2016; Kate Braun; LepiMAP 610458
- UCT-ADU LepiMAP; Pine Valley; 29/11/2016; Kate Braun; LepiMAP 610427
- UCT-ADU LepiMAP; Pine Valley; 20/11/2017; Kate Braun; LepiMAP 635380



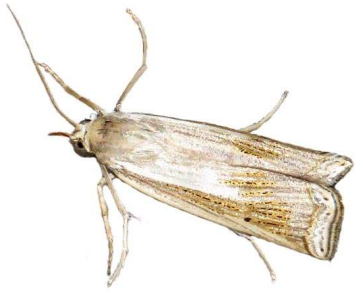
Ancylolomia simplella de Joannis, 1913

UCT-ADU LepiMAP

- UCT-ADU LepiMAP; Pine Valley; 02/10/2018; Kate

Braun; LepiMAP 659413

- UCT-ADU LepiMAP; Pine Valley; 17/12/2017; Kate Braun; LepiMAP 636421
- UCT-ADU LepiMAP; Pine Valley; 27/12/2017; Kate Braun; LepiMAP 637283
- UCT-ADU LepiMAP; Pine Valley; 13/03/2018; Kate Braun; LepiMAP 642754



Ancylolema sp.?

UCT-ADU LepiMap

- UCT-ADU LepiMAP; Pine Valley; 22/09/2017; Kate Braun; LepiMap 632157
- UCT-ADU LepiMAP; Pine Valley; 12/01/2018; Kate Braun; LepiMAP 638958
- UCT-ADU LepiMAP; Pine Valley; 27/12/2017; Kate Braun; LepiMAP 637294
- UCT-ADU LepiMAP; Pine Valley; 30/10/2017; Kate Braun; LepiMAP 634031
- UCT-ADU LepiMAP; Pine Valley; 16/10/2017; Kate Braun; LepiMAP 633195
- UCT-ADU LepiMAP; Pine Valley; 12/10/2017; Kate Braun; LepiMAP 632813
- UCT-ADU LepiMAP; Pine Valley; 06/10/2015; Kate Braun; LepiMAP 579347
- UCT-ADU LepiMAP; Pine Valley; 30/11/2013; Kate Braun; LepiMAP 44069
- UCT-ADU LepiMAP; Pine Valley; 14/11/2013; Kate Braun; LepiMAP 38517
- UCT-ADU LepiMAP; Mlawula; 23/03/2017; Kate Braun; LepiMAP 619007
- UCT-ADU LepiMAP; Malolotja; 20/11/2017; Kate Braun; LepiMAP 635343
- UCT-ADU LepiMAP; Malolotja; 01/01/2017; Kate Braun; LepiMAP 611587
- UCT-ADU LepiMAP; Pine Valley; 10/10/2015; Kate Braun; LepiMAP 579895



Aurotalis nigrisquamalis (Hampson, 1919)

Afromoths: Bassi (2016)



*

Caffrocrambus polyphemus Bassi, 2002
Afromoths: Bassi (2002)

Classeya bicuspidalis (Hampson, 1919)
UCT-ADU LepiMAP

- UCT-ADU LepiMAP; Malolotja; 02/02/2017; Kate Braun; LepiMAP 614356
- UCT-ADU LepiMAP; Malolotja; 02/02/2017; Kate Braun; LepiMAP 614313



Crambus attis Bassi, 2012
UCT-ADU LepiMAP; Afromoths: Bassi (2012)

- TMSA, Bassi, G 2012; Millers Falls; 10/01/1992; N J Duke;
- UCT-ADU LepiMAP; Pine Valley; 30/01/2017; Kate Braun; LepiMAP 614063
- UCT-ADU LepiMAP; Pine Valley; 01/02/2017; Kate Braun; LepiMAP 614242
- UCT-ADU LepiMAP; Pine Valley; 04/02/2017; Kate Braun; LepiMAP 614637
- UCT-ADU LepiMAP; Pine Valley; 10/02/2017; Kate Braun; LepiMAP 615246
- UCT-ADU LepiMAP; Pine Valley; 10/02/2017; Kate Braun; LepiMAP 615248
- UCT-ADU LepiMAP; Pine Valley; 16/02/2017; Kate Braun; LepiMAP 615754
- UCT-ADU LepiMAP; Pine Valley; 25/02/2017; Kate Braun; LepiMAP 617100
- UCT-ADU LepiMAP; Pine Valley; 12/10/2017; Kate Braun; LepiMAP 632785
- UCT-ADU LepiMAP; Pine Valley; 29/10/2017; Kate Braun; LepiMAP 633854
- UCT-ADU LepiMAP; Pine Valley; 30/09/2018; Kate Braun; LepiMAP 659130



Crambidae: Cybalomiinae

Trichophysetis sp. (Guillermet, 1996)
UCT-ADU LepiMap

- UCT-ADU LepiMAP; Mlawula; 02/09/2017; Kate Braun; LepiMap 631912



Crambidae: Glaphyriinae

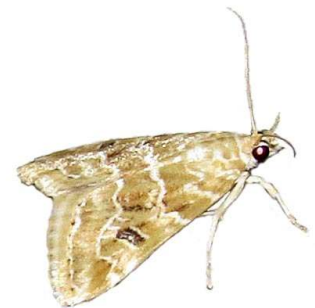
Crocidolomia pavonana (Fabricius, 1794)
UCT-ADU LepiMap

- UCT-ADU LepiMAP; Pine Valley; 25/04/2017; Kate Braun; LepiMAP 622617
- UCT-ADU LepiMAP; Pine Valley; 03/01/2018; Kate Braun; LepiMAP 637961
- UCT-ADU LepiMAP; Pine Valley; 15/02/2017; Kate Braun; LepiMAP 615703
- UCT-ADU LepiMAP; Pine Valley; 29/01/2017; Kate Braun; LepiMAP 613913
- UCT-ADU LepiMAP; Mlawula; 05/01/2018; Kate Braun; LepiMAP 638906
- UCT-ADU LepiMAP; Pine Valley; 09/10/2018; Kate Braun; LepiMAP 660113



Hellula undalis (Fabricius, 1781)
UCT-ADU LepiMAP

- UCT-ADU LepiMAP; Mlawula; 06/01/2018; Kate Braun; LepiMAP 638922
- UCT-ADU LepiMAP; Pine Valley; 06/02/2017; Kate Braun; LepiMAP 614945
- UCT-ADU LepiMAP; Pine Valley; 15/02/2017; Kate Braun; LepiMAP 615669
- UCT-ADU LepiMAP; Pine Valley; 15/02/2017; Kate Braun; LepiMAP 615662



Crambidae: Odontiinae

Autocharis jacobsalis (Marion & Viette, 1956)

- UCT-ADU LepiMAP; Pine Valley; 10/12/2017; Kate Braun; LepiMAP 635810



Pseudonoorda rubricostalis (Hampson, 1910)

UCT-ADU LepiMap

- UCT-ADU LepiMAP; Mlawula; 11/11/2013; de Beer Len ; Jemma de Beer; LepiMAP 39216
- UCT-ADU LepiMAP; Mlawula; 20/12/2013; de Beer Len; LepiMAP 39252
- UCT-ADU LepiMAP; Mlawula; 27/12/2014; Kate Braun; LepiMAP 559313
- UCT-ADU LepiMAP; Mlawula; 31/12/2014; Kate Braun; LepiMAP 559353
- UCT-ADU LepiMAP; Pine Valley; 20/11/2017; Kate Braun; LepiMAP 635383
- UCT-ADU LepiMAP; Pine Valley; 12/12/2017; Kate Braun; LepiMAP 636055



Achyra nudalis (Hübner, 1796)

UCT-ADU LepiMap

- UCT-ADU LepiMAP; Mlawula; 21/10/2016; Kate Braun; LepiMAP 606515
- UCT-ADU LepiMAP; Mlawula; 22/10/2016; Kate Braun; LepiMAP 606523



Anania gobini (Maes, 2005)

AfroMoths: TMSA

- AfroMoths; Malolotja; 31/12/1992; N J Duke;

Euclasta varii Popescu-Gorj &

Constantinescu, 1973

UCT-ADU LepiMap

- UCT-ADU LepiMAP; Pine Valley; 16/03/2017; Kate Braun; LepiMAP 618073
- UCT-ADU LepiMAP; Pine Valley; 29/03/2017; Kate Braun; LepiMAP 619411
- UCT-ADU LepiMAP; Pine Valley; 13/03/2018; Kate Braun; LepiMAP 642747



Viettessa margaritalis (Hampson, 1899)

UCT-ADU LepiMap

- UCT-ADU LepiMAP; Mlawula; 18/01/2017; Kate Braun; LepiMAP 612764
- UCT-ADU LepiMAP; Mlawula; 19/01/2017; Kate Braun; LepiMAP 612811



Crambidae: Pyraustinae

(not identified)

- UCT-ADU LepiMAP; Pine Valley; 24/08/2017; Kate Braun; LepiMap 630565



Achyra coelatalis (Walker, 1859)

UCT-ADU LepiMap

- UCT-ADU LepiMAP; Pine Valley; 30/01/2017; Kate Braun; LepiMAP 614081
- UCT-ADU LepiMAP; Pine Valley; 23/12/2017; Kate Braun; LepiMAP 636808
- UCT-ADU LepiMAP; Mlawula; 21/10/2016; Kate Braun; LepiMAP 606513



Loxostege frustralis (Zeller, 1852)

UCT-ADU LepiMap

- UCT-ADU LepiMAP; Mlawula; 26/12/2014; Kate Braun; LepiMAP 559294



Loxostege venustalis (Cramer, 1782)

UCT-ADU LepiMAP

- UCT-ADU LepiMAP; Pine Valley; 02/10/2018; Kate Braun; LepiMAP 659378
- UCT-ADU LepiMAP; Pine Valley; 11/10/2018; Kate Braun; LepiMAP 660292
- UCT-ADU LepiMAP; Pine Valley; 20/10/2014; Kate Braun; LepiMAP 553903



Pagyda salvalis Walker, 1958

UCT-ADU LepiMap

- UCT-ADU LepiMAP; Pine Valley; 06/12/2018; Kate Braun; LepiMAP 664361



Pioneabathra olesialis (Walker, 1859)

UCT-ADU LepiMap

- UCT-ADU LepiMAP; Mlawula; 23/03/2017; Kate Braun; LepiMAP 618992
- UCT-ADU LepiMAP; Pine Valley; 28/03/2017; Kate Braun; LepiMAP 619281



Pyrausta apicalis (Hampson, 1913)

Afromoths

Pyrausta phoenicealis (Hübner, 1818)

UCT-ADU LepiMap

- UCT-ADU LepiMAP; Pine Valley; 21/03/2017; Kate Braun; LepiMAP 618659
- UCT-ADU LepiMAP; Pine Valley; 29/03/2017; Kate Braun; LepiMAP 619390
- UCT-ADU LepiMAP; Pine Valley; 29/03/2017; Kate Braun; LepiMAP 619406
- UCT-ADU LepiMAP; Pine Valley; 03/04/2017; Kate Braun; LepiMAP 620106



Uresiphita polygonalis (Fabricius, 1794)
UCT-ADU LepiMAP
(*Uresiphita gilvata*)

- UCT-ADU LepiMAP; Pine Valley; 23/04/2017; Kate Braun; LepiMAP 622384
- UCT-ADU LepiMAP; Pine Valley; 25/04/2017; Kate Braun; LepiMAP 622627
- UCT-ADU LepiMAP; Pine Valley; 18/04/2017; Kate Braun; LepiMAP 621833
- UCT-ADU LepiMAP; Pine Valley; 18/04/2017; Kate Braun; LepiMAP 621827
- UCT-ADU LepiMAP; Pine Valley; 15/04/2017; Kate Braun; LepiMAP 621349
- UCT-ADU LepiMAP; Pine Valley; 05/04/2017; Kate Braun; LepiMAP 620275
- UCT-ADU LepiMAP; Pine Valley; 03/04/2017; Kate Braun; LepiMAP 620129
- UCT-ADU LepiMAP; Pine Valley; 20/03/2017; Kate Braun; LepiMAP 618553
- UCT-ADU LepiMAP; Pine Valley; 17/02/2017; Kate Braun; LepiMAP 615910
- UCT-ADU LepiMAP; Pine Valley; 15/02/2017; Kate Braun; LepiMAP 615665
- UCT-ADU LepiMAP; Pine Valley; 04/02/2017; Kate Braun; LepiMAP 614684
- UCT-ADU LepiMAP; Mlawula; 23/04/2014; Kate Braun; LepiMAP 44959
- UCT-ADU LepiMAP; Pine Valley; 04/02/2017; Kate Braun; LepiMAP 614666
- UCT-ADU LepiMAP; Pine Valley; 14/01/2018; Kate Braun; LepiMAP 639150
- UCT-ADU LepiMAP; Pine Valley; 28/03/2017; Kate Braun; LepiMAP 619278

Crambidae: Spilomelinae

(not identified)

- UCT-ADU LepiMAP; Pine Valley; 22/04/2017; Kate Braun; LepiMAP 622324
- UCT-ADU LepiMAP; Pine Valley; 23/04/2017; Kate Braun; LepiMAP 622351
- UCT-ADU LepiMAP; Pine Valley; 20/04/2017; Kate Braun; LepiMAP 622024
- UCT-ADU LepiMAP; Pine Valley; 19/04/2017; Kate Braun; LepiMAP 621978
- UCT-ADU LepiMAP; Pine Valley; 17/03/2017; Kate Braun; LepiMAP 618182
- UCT-ADU LepiMAP; Malolotja; 02/02/2017; Kate Braun; LepiMAP 614368
- UCT-ADU LepiMAP; Pine Valley; 23/04/2017; Kate Braun; LepiMAP 622364

Agathodes musivalis Guenée, 1854

- UCT-ADU LepiMAP
- UCT-ADU LepiMAP; Mlawula; 18/01/2017; Kate Braun; LepiMAP 612629
 - UCT-ADU LepiMAP; Pine Valley; 04/02/2017; Kate Braun; LepiMAP 614629
 - UCT-ADU LepiMAP; Pine Valley; 17/03/2017; Kate Braun; LepiMAP 618184

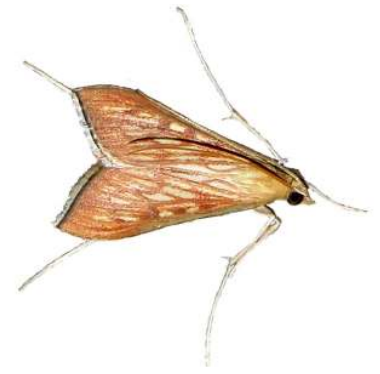


***Analyta* sp.**

- UCT-ADU LepiMAP
- UCT-ADU LepiMAP; Mlawula; 19/01/2017; Kate Braun; LepiMAP 612808

Antigastra catalaunalis (Duponchel, 1833)

- UCT-ADU LepiMAP
- UCT-ADU LepiMAP; Pine Valley; 27/05/2017; Kate Braun; LepiMAP 626455
 - UCT-ADU LepiMAP; Pine Valley; 02/10/2018; Kate Braun; LepiMAP 659411
 - UCT-ADU LepiMAP; Pine Valley; 05/04/2016; Kate Braun; LepiMAP 592670
 - UCT-ADU LepiMAP; Pine Valley; 27/10/2018; Kate Braun; LepiMAP 660953
 - UCT-ADU LepiMAP; Pine Valley; 09/10/2018; Kate Braun; LepiMAP 660120
 - UCT-ADU LepiMAP; Pine Valley; 13/03/2018; Kate Braun; LepiMAP 642735
 - UCT-ADU LepiMAP; Pine Valley; 09/12/2017; Kate Braun; LepiMAP 635797
 - UCT-ADU LepiMAP; Pine Valley; 15/02/2017; Kate Braun; LepiMAP 615672
 - UCT-ADU LepiMAP; Pine Valley; 18/04/2017; Kate Braun; LepiMAP 621809
 - UCT-ADU LepiMAP; Pine Valley; 03/04/2017; Kate Braun; LepiMAP 620122
 - UCT-ADU LepiMAP; Pine Valley; 31/01/2017; Kate Braun; LepiMAP 614173
 - UCT-ADU LepiMAP; Pine Valley; 18/03/2017; Kate Braun; LepiMAP 618305
 - UCT-ADU LepiMAP; Pine Valley; 15/10/2018; Kate Braun; LepiMAP 660456
 - UCT-ADU LepiMAP; Pine Valley; 12/03/2017; Kate Braun; LepiMAP 617738
 - UCT-ADU LepiMAP; Pine Valley; 18/04/2017; Kate Braun; LepiMAP 621857



Archernis flavidalis Hampson, 1908
UCT-ADU LepiMAP

- UCT-ADU LepiMAP; Pine Valley; 01/02/2017; Kate Braun; LepiMAP 614250
- UCT-ADU LepiMAP; Pine Valley; 20/11/2017; Kate Braun; LepiMAP 635374
- UCT-ADU LepiMAP; Pine Valley; 09/12/2017; Kate Braun; LepiMAP 635827
- UCT-ADU LepiMAP; Pine Valley; 20/01/2018; Kate Braun; LepiMAP 639485
- UCT-ADU LepiMAP; Pine Valley; 30/11/2018; Kate Braun; LepiMAP 663680



Bocchoris inspersalis (Zeller, 1852)
UCT-ADU LepiMAP

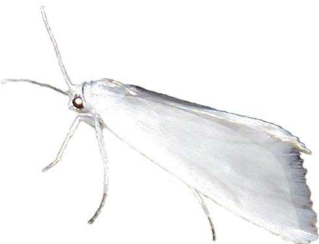
- UCT-ADU LepiMAP; Pine Valley; 23/05/2014; Kate Braun; LepiMAP 47047
- UCT-ADU LepiMAP; Pine Valley; 25/04/2017; Kate Braun; LepiMAP 622631
- UCT-ADU LepiMAP; Pine Valley; 19/04/2017; Kate Braun; LepiMAP 621988



Crambidae: Schoenobiinae

Patissa virginea (Zeller, 1852)
UCT-ADU LepiMAP

- UCT-ADU LepiMAP; Pine Valley; 31/12/2018; Kate Braun; LepiMAP 666968



Cirrhochrsta grabczewskyi Hering, E., 1903

- UCT-ADU LepiMAP
- UCT-ADU LepiMAP; Pine Valley; 17/02/2017; Kate Braun; LepiMAP 615777
 - UCT-ADU LepiMAP; Pine Valley; 14/03/2018; Kate Braun; LepiMAP 642773
 - UCT-ADU LepiMAP; Pine Valley; 24/02/2018; Kate Braun; LepiMAP 641439
 - UCT-ADU LepiMAP; Pine Valley; 10/02/2018; Kate Braun; LepiMAP 640597
 - UCT-ADU LepiMAP; Pine Valley; 02/05/2017; Kate Braun; LepiMAP 626386
 - UCT-ADU LepiMAP; Pine Valley; 06/02/2017; Kate Braun; LepiMAP 614939
 - UCT-ADU LepiMAP; Pine Valley; 01/02/2017; Kate Braun; LepiMAP 614248

- UCT-ADU LepiMAP; Pine Valley; 10/04/2016; Kate Braun; LepiMAP 595076
- UCT-ADU LepiMAP; Pine Valley; 15/03/2015; Kate Braun; LepiMAP 565832
- UCT-ADU LepiMAP; Pine Valley; 08/01/2016; Kate Braun; LepiMAP 586988



Diaphania indica (Saunders, 1851)
UCT-ADU LepiMap

- UCT-ADU LepiMAP; Pine Valley; 28/03/2017; Kate Braun; LepiMAP 619266
- UCT-ADU LepiMAP; Pine Valley; 03/04/2017; Kate Braun; LepiMAP 620108
- UCT-ADU LepiMAP; Pine Valley; 15/02/2017; Kate Braun; LepiMAP 615666



Diasemia disjectalis (Zeller, 1852)
UCT-ADU LepiMap

- UCT-ADU LepiMAP; Pine Valley; 26/02/2015; Kate Braun; LepiMAP 564371



Diasemia monostigma Hampson, 1913
UCT-ADU LepiMap

- UCT-ADU LepiMAP; Pine Valley; 21/12/2017; Kate Braun; LepiMAP 636637
- UCT-ADU LepiMAP; Malolotja; 02/02/2017; Kate Braun; LepiMAP 614318
- UCT-ADU LepiMAP; Pine Valley; 24/01/2018; Kate Braun; LepiMAP 639728
- UCT-ADU LepiMAP; Pine Valley; 26/11/2017; Kate Braun; LepiMAP 635391
- UCT-ADU LepiMAP; Pine Valley; 29/12/2016; Kate Braun; LepiMAP 611418
- UCT-ADU LepiMAP; Mlawula; 06/10/2018; Kate Braun; LepiMAP 659872
- UCT-ADU LepiMAP; Mlawula; 27/06/2017; Kate Braun; LepiMAP 628582
- UCT-ADU LepiMAP; Malolotja; 02/02/2017; Kate Braun; LepiMAP 614360
- UCT-ADU LepiMAP; Pine Valley; 06/02/2018; Kate Braun; LepiMAP 640373



Dolicharthria lanceolalis (Guenée, 1854)
UCT-ADU LepiMAP

- UCT-ADU LepiMAP; Pine Valley; 14/02/2018; Kate Braun; LepiMAP 640924
- UCT-ADU LepiMAP; Pine Valley; 17/12/2017; Kate Braun; LepiMAP 636442
- UCT-ADU LepiMAP; Pine Valley; 09/03/2018; Kate Braun; LepiMAP 642577
- UCT-ADU LepiMAP; Pine Valley; 27/05/2017; Kate Braun; LepiMAP 626452
- UCT-ADU LepiMAP; Pine Valley; 02/05/2017; Kate Braun; LepiMAP 626381
- UCT-ADU LepiMAP; Pine Valley; 21/03/2017; Kate Braun; LepiMAP 618653
- UCT-ADU LepiMAP; Pine Valley; 17/12/2017; Kate Braun; LepiMAP 636433
- UCT-ADU LepiMAP; Pine Valley; 23/12/2017; Kate Braun; LepiMAP 636813
- UCT-ADU LepiMAP; Pine Valley; 03/01/2018; Kate Braun; LepiMAP 637955
- UCT-ADU LepiMAP; Pine Valley; 19/01/2018; Kate Braun; LepiMAP 639457
- UCT-ADU LepiMAP; Pine Valley; 01/02/2018; Kate Braun; LepiMAP 640098
- UCT-ADU LepiMAP; Pine Valley; 05/03/2018; Kate Braun; LepiMAP 642543
- UCT-ADU LepiMAP; Pine Valley; 25/04/2017; Kate Braun; LepiMAP 622620
- UCT-ADU LepiMAP; Pine Valley; 20/01/2018; Kate Braun; LepiMAP 639506
- UCT-ADU LepiMAP; Pine Valley; 23/02/2017; Kate Braun; LepiMAP 616508
- UCT-ADU LepiMAP; Pine Valley; 20/04/2017; Kate Braun; LepiMAP 622003
- UCT-ADU LepiMAP; Pine Valley; 05/04/2017; Kate Braun; LepiMAP 620286
- UCT-ADU LepiMAP; Pine Valley; 01/02/2017; Kate Braun; LepiMAP 614237
- UCT-ADU LepiMAP; Pine Valley; 04/02/2017; Kate Braun; LepiMAP 614623
- UCT-ADU LepiMAP; Pine Valley; 17/02/2017; Kate Braun; LepiMAP 615866
- UCT-ADU LepiMAP; Pine Valley; 08/03/2017; Kate Braun; LepiMAP 617517
- UCT-ADU LepiMAP; Pine Valley; 11/03/2017; Kate Braun; LepiMAP 617617
- UCT-ADU LepiMAP; Pine Valley; 16/03/2017; Kate Braun; LepiMAP 618092
- UCT-ADU LepiMAP; Pine Valley; 17/03/2017; Kate Braun; LepiMAP 618142
- UCT-ADU LepiMAP; Pine Valley; 03/04/2017; Kate Braun; LepiMAP 620117
- UCT-ADU LepiMAP; Pine Valley; 20/04/2017; Kate Braun; LepiMAP 621998
- UCT-ADU LepiMAP; Pine Valley; 11/02/2017; Kate Braun; LepiMAP 615292



Duponchelia fovealis fovealis Zeller, 1847
UCT-ADU LepiMAP

- UCT-ADU LepiMAP; Mlawula; 06/01/2018; Kate Braun; LepiMAP 638931



Dysallacta negatalis (Walker, 1859)
UCT-ADU LepiMap
(*Glyphodes negatalis*)

- UCT-ADU LepiMAP; Pine Valley; 15/10/2017; Kate Braun; LepiMAP 633105
- UCT-ADU LepiMAP; Pine Valley; 04/02/2017; Kate Braun; LepiMAP 614693
- UCT-ADU LepiMAP; Pine Valley; 11/10/2018; Kate Braun; LepiMAP 660289
- UCT-ADU LepiMAP; Pine Valley; 30/01/2017; Kate Braun; LepiMAP 614060
- UCT-ADU LepiMAP; Pine Valley; 26/01/2017; Kate Braun; LepiMAP 613557
- UCT-ADU LepiMAP; Pine Valley; 04/02/2017; Kate Braun; LepiMAP 614661



Ghesquierellana hirtusalis (Walker, 1859)
UCT-ADU LepiMAP

- UCT-ADU LepiMAP; Pine Valley; 04/02/2017; Kate Braun; LepiMAP 614668
- UCT-ADU LepiMAP; Pine Valley; 23/04/2017; Kate Braun; LepiMAP 622378
- UCT-ADU LepiMAP; Mlawula; 06/10/2018; Kate Braun; LepiMAP 659861



Glyphodes aniferalis Hampson, 1909
UCT-ADU LepiMAP

- UCT-ADU LepiMAP; Pine Valley; 29/03/2017; Kate Braun; LepiMAP 619408
- UCT-ADU LepiMAP; Pine Valley; 11/09/2017; Kate Braun; LepiMAP 632060
- UCT-ADU LepiMAP; Pine Valley; 20/01/2018; Kate Braun; LepiMAP 639483



Haritalodes derogata (Fabricius, 1775)
UCT-ADU LepiMAP

- UCT-ADU LepiMAP; Pine Valley; 26/03/2012; Kate Braun; LepiMAP 22438
- UCT-ADU LepiMAP; Pine Valley; 20/03/2017; Kate Braun; LepiMAP 618548



Hodebertia testalis (Fabricius, 1794)
UCT-ADU LepiMAP

- UCT-ADU LepiMAP; Pine Valley; 19/04/2017; Kate Braun; LepiMAP 621955



Glyphodes bicolor (Swainson, 1821)
UCT-ADU LepiMAP

- UCT-ADU LepiMAP; Pine Valley; 09/12/2012; Kate Braun; LepiMAP 44077
- UCT-ADU LepiMAP; Pine Valley; 09/12/2012; Kate Braun; LepiMAP 26901
- UCT-ADU LepiMAP; Pine Valley; 11/03/2017; Kate Braun; LepiMAP 617631
- UCT-ADU LepiMAP; Pine Valley; 15/10/2017; Kate Braun; LepiMAP 633096
- UCT-ADU LepiMAP; Pine Valley; 10/12/2017; Kate Braun; LepiMAP 635815



Haritalodes polycymalis (Hampson, 1912)
UCT-ADU LepiMAP

- UCT-ADU LepiMAP; Pine Valley; 04/02/2017; Kate Braun; LepiMAP 614667



Hydriris ornatalis (Duponchel, 1832)
UCT-ADU LepiMAP

- UCT-ADU LepiMAP; Mlawula; 23/03/2017; Kate Braun; LepiMAP 619021
- UCT-ADU LepiMAP; Pine Valley; 25/04/2017; Kate Braun; LepiMAP 622630



Glyphodes stolalis Guenée, 1854
UCT-ADU LepiMAP

- UCT-ADU LepiMAP; Pine Valley; 17/02/2017; Kate Braun; LepiMAP 615891
- UCT-ADU LepiMAP; Pine Valley; 19/01/2018; Kate Braun; LepiMAP 639459



***Haritalodes* sp.**
UCT-ADU LepiMAP

- UCT-ADU LepiMAP; Pine Valley; 10/12/2017; Kate Braun; LepiMAP 635820



Lamprophaia ablactalis (Walker, 1859)
UCT-ADU LepiMAP
(*Poliobotys ablactalis*)

- UCT-ADU LepiMAP; Pine Valley; 25/04/2017; Kate Braun; LepiMAP 622623
- UCT-ADU LepiMAP; Pine Valley; 09/03/2018; Kate Braun; LepiMAP 642579
- UCT-ADU LepiMAP; Pine Valley; 12/04/2017; Kate Braun; LepiMAP 620834
- UCT-ADU LepiMAP; Pine Valley; 28/03/2017; Kate Braun; LepiMAP 619261
- UCT-ADU LepiMAP; Pine Valley; 17/03/2017; Kate Braun; LepiMAP 618181
- UCT-ADU LepiMAP; Pine Valley; 12/03/2017; Kate Braun; LepiMAP 617734
- UCT-ADU LepiMAP; Pine Valley; 11/03/2017; Kate Braun; LepiMAP 617621
- UCT-ADU LepiMAP; Pine Valley; 04/04/2018; Kate Braun; LepiMAP 644858



Glyphodes sycina (Tams, 1941)
UCT-ADU LepiMAP

- UCT-ADU LepiMAP; Pine Valley; 11/09/2017; Kate Braun; LepiMAP 632060



- UCT-ADU LepiMAP; Pine Valley; 17/03/2017; Kate Braun; LepiMAP 618187



Herpetogramma basalis (Walker, 1866)
UCT-ADU LepiMAP

- UCT-ADU LepiMAP; Pine Valley; 01/02/2017; Kate Braun; LepiMAP 614221
- UCT-ADU LepiMAP; Pine Valley; 01/01/2019; Kate Braun; LepiMAP 667299



Leucinodes pseudorbonalis Mally,

Korycinska, Agassiz, Hall, Hodgets,
& Nuss, 2015

UCT-ADU LepiMap

- UCT-ADU LepiMAP; Pine Valley; 29/12/2018; Kate Braun; LepiMAP 666668



Leucinodes vagans (Tutt, 1890)

Project Noah (Photos by Tina Petterson)
(*Syllepte vagans*)

- Project Noah; Mlawula; 30/10/2013; Tina Petterson; PN 61766082



Maruca vitrata (Fabricius, 1787)

UCT-ADU LepiMap

- UCT-ADU LepiMAP; Mlawula; 19/01/2017; Kate Braun; LepiMAP 612807



Nausinoe geometralis (Guenée, 1854)

UCT-ADU LepiMap

- UCT-ADU LepiMAP; Mlawula; 04/04/2015; Kate Braun; LepiMAP 568013
- UCT-ADU LepiMAP; Pine Valley; 19/04/2017; Kate Braun; LepiMAP 621964
- UCT-ADU LepiMAP; Pine Valley; 20/04/2017; Kate Braun; LepiMAP 622001
- UCT-ADU LepiMAP; Pine Valley; 16/01/2018; Kate Braun; LepiMAP 639437



Nomophila noctuella (Denis &
Schiffermüller, 1775)

UCT-ADU LepiMap

- UCT-ADU LepiMAP; Mlawula; 27/06/2017; Kate Braun; LepiMAP 628579



Notarcha quaternalis (Zeller, 1852)

UCT-ADU LepiMap

- UCT-ADU LepiMAP; Pine Valley; 13/01/2017; Kate Braun; LepiMAP 612500
- UCT-ADU LepiMAP; Pine Valley; 04/02/2017; Kate Braun; LepiMAP 614670



Obtusipalpis pardalis Hampson, 1896

UCT-ADU LepiMap

- UCT-ADU LepiMAP; Pine Valley; 16/02/2015; Kate Braun; LepiMAP 563571
- UCT-ADU LepiMAP; Pine Valley; 06/04/2016; Kate Braun; LepiMAP 592676
- UCT-ADU LepiMAP; Pine Valley; 04/11/2016; Kate Braun; LepiMAP 609637
- iNaturalist; Pine Valley; 29/12/2016; Kate Braun; iNaturalist 11287642
- UCT-ADU LepiMAP; Pine Valley; 29/12/2016; Kate Braun; LepiMAP 611422
- UCT-ADU LepiMAP; Pine Valley; 09/01/2017; Kate Braun; LepiMAP 612482
- UCT-ADU LepiMAP; Pine Valley; 29/01/2017; Kate Braun; LepiMAP 613920
- UCT-ADU LepiMAP; Pine Valley; 06/03/2017; Kate Braun; LepiMAP 617385
- UCT-ADU LepiMAP; Pine Valley; 18/03/2017; Kate Braun; LepiMAP 618315
- UCT-ADU LepiMAP; Pine Valley; 22/09/2017; Kate Braun; LepiMap 632155
- UCT-ADU LepiMAP; Pine Valley; 29/09/2017; Kate Braun; LepiMap 632364
- UCT-ADU LepiMAP; Pine Valley; 09/10/2017; Kate Braun; LepiMap 632621
- UCT-ADU LepiMAP; Pine Valley; 12/11/2017; Kate Braun; LepiMAP 634707
- UCT-ADU LepiMAP; Pine Valley; 16/12/2017; Kate Braun; LepiMAP 636318
- UCT-ADU LepiMAP; Pine Valley; 20/01/2018; Kate Braun; LepiMAP 639504
- UCT-ADU LepiMAP; Pine Valley; 09/02/2018; Kate Braun; LepiMAP 640504
- UCT-ADU LepiMAP; Pine Valley; 09/03/2018; Kate Braun; LepiMAP 642593
- UCT-ADU LepiMAP; Pine Valley; 15/10/2018; Kate Braun; LepiMAP 660454



Palpita unionalis (Rossi, 1794)

UCT-ADU LepiMap

- UCT-ADU LepiMAP; Pine Valley; 15/02/2017; Kate Braun; LepiMAP 615696
- UCT-ADU LepiMAP; Pine Valley; 26/04/2017; Kate Braun; LepiMAP 622871



Pardomima distortana (Strand, 1913)

UCT-ADU LepiMap

- UCT-ADU LepiMAP; Mlawula; 05/01/2018; Kate Braun; LepiMAP 638888
- UCT-ADU LepiMAP; Pine Valley; 05/01/2017; Kate Braun; LepiMAP 612087
- UCT-ADU LepiMAP; Pine Valley; 04/02/2017; Kate Braun; LepiMAP 614655
- UCT-ADU LepiMAP; Pine Valley; 17/03/2017; Kate Braun; LepiMAP 618163
- UCT-ADU LepiMAP; Pine Valley; 15/10/2017; Kate Braun; LepiMAP 633112
- UCT-ADU LepiMAP; Pine Valley; 01/10/2018; Kate Braun; LepiMAP 659289
- UCT-ADU LepiMAP; Pine Valley; 10/10/2018; Kate Braun; LepiMAP 660194



Parotis sp.

UCT-ADU LepiMap

- UCT-ADU LepiMAP; Pine Valley; 22/12/2016; Kate Braun; LepiMAP 611390



Pycnarmon cribratum (Fabricius, 1794)

UCT-ADU LepiMap

- UCT-ADU LepiMAP; Pine Valley; 17/03/2017; Kate Braun; LepiMAP 618132

- UCT-ADU LepiMAP; Pine Valley; 19/04/2017; Kate Braun; LepiMAP 621951



***Salbia haemorrhoidalis* (Guenée, 1854)**

UCT-ADU LepiMAP

- UCT-ADU LepiMAP; Pine Valley; 29/01/2017; Kate Braun; LepiMAP 613921



***Sameodes cancellalis* (Zeller, 1852)**

UCT-ADU LepiMAP

- UCT-ADU LepiMAP; Mlawula; 28/06/2017; Kate Braun; LepiMAP 628723
- UCT-ADU LepiMAP; Pine Valley; 26/04/2017; Kate Braun; LepiMAP 622874



***Sameodesma xanthocraspia* (Hampson, 1913)**

UCT-ADU LepiMAP

- UCT-ADU LepiMAP; Pine Valley; 16/12/2017; Kate Braun; LepiMAP 636278
- UCT-ADU LepiMAP; Pine Valley; 13/01/2018; Kate Braun; LepiMAP 638967
- UCT-ADU LepiMAP; Pine Valley; 01/02/2018; Kate Braun; LepiMAP 640106
- UCT-ADU LepiMAP; Pine Valley; 21/12/2017; Kate Braun; LepiMAP 636643
- UCT-ADU LepiMAP; Pine Valley; 09/12/2017; Kate Braun; LepiMAP 635775
- UCT-ADU LepiMAP; Pine Valley; 21/11/2017; Kate Braun; LepiMAP 635385
- UCT-ADU LepiMAP; Pine Valley; 26/11/2016; Kate Braun; LepiMAP 609642
- UCT-ADU LepiMAP; Pine Valley; 07/02/2017; Kate Braun; LepiMAP 615045
- UCT-ADU LepiMAP; Pine Valley; 12/12/2017; Kate Braun; LepiMAP 636057



***Spoladea recurvalis* (Fabricius, 1775)**

UCT-ADU LepiMAP

(*Spoladea fascialis*)

- UCT-ADU LepiMAP; Malolotja; 14/03/2010; Kate Braun; LepiMAP 12332
- UCT-ADU LepiMAP; Mlawula; 02/04/2010; Kate Braun; LepiMAP 12293
- UCT-ADU LepiMAP; Mlawula; 22/05/2011; Kate Braun; LepiMAP 18052
- UCT-ADU LepiMAP; Mlawula; 11/11/2013; de Beer Len ; Jemma de Beer; LepiMAP 39215
- UCT-ADU LepiMAP; Mlawula; 19/04/2014; Kate Braun; LepiMAP 44758
- UCT-ADU LepiMAP; Lubombo Mountains, Mabuda Farm; 18/04/2015; de Beer Len ; Jonathan de Beer, Jemma de Beer, Daniel de Beer , Sonja de Beer; LepiMAP 569268
- UCT-ADU LepiMAP; Malolotja; 02/02/2017; Kate Braun; LepiMAP 614333
- UCT-ADU LepiMAP; Pine Valley; 17/02/2017; Kate Braun; LepiMAP 615942
- UCT-ADU LepiMAP; Mlawula; 25/03/2017; Kate Braun; LepiMAP 619164
- UCT-ADU LepiMAP; Pine Valley; 29/03/2017; Kate Braun; LepiMAP 619377
- UCT-ADU LepiMAP; Pine Valley; 03/04/2017; Kate Braun; LepiMAP 620109
- UCT-ADU LepiMAP; Malolotja; 06/04/2017; Kate Braun; LepiMAP 620333
- UCT-ADU LepiMAP; Pine Valley; 18/04/2017; Kate Braun; LepiMAP 621842
- UCT-ADU LepiMAP; Mlawula; 27/06/2017; Kate Braun; LepiMAP 628575
- UCT-ADU LepiMAP; Pine Valley; 20/01/2018; Kate Braun; LepiMAP 639497
- UCT-ADU LepiMAP; Mlawula; 03/03/2018; Kate Braun; LepiMAP 642464



***Stenochora lancinalis* (Guenée, 1854)**

UCT-ADU LepiMAP

- UCT-ADU LepiMAP; Pine Valley; 14/01/2018; Kate Braun; LepiMAP 639172
- UCT-ADU LepiMAP; Pine Valley; 15/10/2018; Kate Braun; LepiMAP 660478
- UCT-ADU LepiMAP; Pine Valley; 10/10/2018; Kate Braun; LepiMAP 660187
- UCT-ADU LepiMAP; Pine Valley; 14/03/2018; Kate Braun; LepiMAP 642784
- UCT-ADU LepiMAP; Pine Valley; 04/02/2017; Kate Braun; LepiMAP 614679
- UCT-ADU LepiMAP; Pine Valley; 09/02/2018; Kate Braun; LepiMAP 640521
- UCT-ADU LepiMAP; Pine Valley; 16/12/2017; Kate Braun; LepiMAP 636287
- UCT-ADU LepiMAP; Pine Valley; 12/11/2017; Kate Braun; LepiMAP 634699
- UCT-ADU LepiMAP; Pine Valley; 21/03/2017; Kate Braun; LepiMAP 618680
- UCT-ADU LepiMAP; Pine Valley; 21/12/2017; Kate Braun; LepiMAP 636633
- UCT-ADU LepiMAP; Pine Valley; 31/01/2017; Kate Braun; LepiMAP 614213
- UCT-ADU LepiMAP; Pine Valley; 09/11/2017; Kate Braun; LepiMAP 634477



***Syllepte straminea* (Butler, 1875)**

UCT-ADU LepiMAP

- UCT-ADU LepiMAP; Pine Valley; 12/11/2017; Kate Braun; LepiMAP 634700
- UCT-ADU LepiMAP; Pine Valley; 22/01/2017; Kate Braun; LepiMAP 613080



***Synclera traducalis* (Zeller, 1852)**

UCT-ADU LepiMAP Swaziland Species List Nov 2016

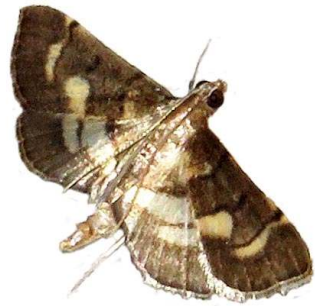
- UCT-ADU LepiMAP; Pine Valley; 19/04/2017; Kate Braun; LepiMAP 621938
- UCT-ADU LepiMAP; Pine Valley; 25/04/2017; Kate Braun; LepiMAP 622636
- UCT-ADU LepiMAP; Pine Valley; 09/02/2018; Kate Braun; LepiMAP 640528
- UCT-ADU LepiMAP; Pine Valley; 10/02/2018; Kate Braun; LepiMAP 640594
- UCT-ADU LepiMAP; Pine Valley; 03/04/2017; Kate Braun; LepiMAP 620121
- UCT-ADU LepiMAP; Pine Valley; 14/03/2018; Kate Braun; LepiMAP 642817
- UCT-ADU LepiMAP; Pine Valley; 14/04/2017; Kate Braun; LepiMAP 621153
- UCT-ADU LepiMAP; Pine Valley; 02/05/2018; Kate Braun; LepiMAP 647097
- UCT-ADU LepiMAP; Pine Valley; 05/03/2018; Kate Braun; LepiMAP 642563
- UCT-ADU LepiMAP; Pine Valley; 17/03/2017; Kate Braun; LepiMAP 618155
- UCT-ADU LepiMAP; Pine Valley; 07/03/2017; Kate Braun; LepiMAP 617486
- UCT-ADU LepiMAP; Pine Valley; 17/02/2017; Kate Braun; LepiMAP 615892
- UCT-ADU LepiMAP; Pine Valley; 29/01/2017; Kate Braun; LepiMAP 613936
- UCT-ADU LepiMAP; Mlawula; 03/03/2018; Kate Braun; LepiMAP 642489
- UCT-ADU LepiMAP; Mlawula; 29/06/2017; Kate Braun; LepiMAP 628730
- UCT-ADU LepiMAP; Mlawula; 23/03/2017; Kate Braun; LepiMAP 618990
- UCT-ADU LepiMAP; Mbuluzi Game Reserve; 02/02/2006; Roland H; LepiMAP 556561
- UCT-ADU LepiMAP; Pine Valley; 18/03/2017; Kate Braun; LepiMAP 618317
- UCT-ADU LepiMAP; Pine Valley; 19/04/2017; Kate Braun; LepiMAP 621942



Syngamia sp.

UCT-ADU LepiMAP

- UCT-ADU LepiMAP; Pine Valley; 13/08/2017; Kate Braun; LepiMAP 630026
- UCT-ADU LepiMAP; Pine Valley; 28/10/2018; Kate Braun; LepiMAP 661065
- UCT-ADU LepiMAP; Pine Valley; 30/09/2018; Kate Braun; LepiMAP 659124
- UCT-ADU LepiMAP; Pine Valley; 03/04/2018; Kate Braun; LepiMAP 644852
- UCT-ADU LepiMAP; Pine Valley; 06/02/2018; Kate Braun; LepiMAP 640351
- UCT-ADU LepiMAP; Pine Valley; 27/12/2017; Kate Braun; LepiMAP 637292
- UCT-ADU LepiMAP; Pine Valley; 16/08/2017; Kate Braun; LepiMAP 630312
- UCT-ADU LepiMAP; Pine Valley; 15/08/2017; Kate Braun; LepiMAP 630272



Udea ferrugalis (Hübner, 1796)

UCT-ADU LepiMap

- UCT-ADU LepiMAP; Pine Valley; 09/02/2018; Kate Braun; LepiMAP 640519
- UCT-ADU LepiMAP; Pine Valley; 16/01/2018; Kate Braun; LepiMAP 639443
- UCT-ADU LepiMAP; Pine Valley; 09/01/2017; Kate Braun; LepiMAP 612486
- UCT-ADU LepiMAP; Pine Valley; 04/02/2017; Kate Braun; LepiMAP 614695
- UCT-ADU LepiMAP; Pine Valley; 02/12/2016; Kate Braun; LepiMAP 610466
- UCT-ADU LepiMAP; Pine Valley; 01/01/2018; Kate Braun; LepiMAP 637800



Pyralidae: Galleriinae

Lamoria adaptella (Walker, 1863)

UCT-ADU LepiMap

- UCT-ADU LepiMAP; Pine Valley; 21/03/2017; Kate Braun; LepiMAP 618679
- UCT-ADU LepiMAP; Malolotja; 05/04/2017; Kate Braun; LepiMAP 620284

Braun; LepiMAP 620284

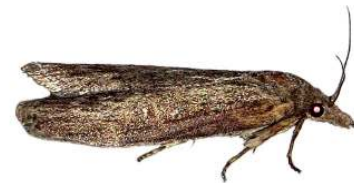
- UCT-ADU LepiMAP; Pine Valley; 24/08/2017; Kate Braun; LepiMap 630572
- UCT-ADU LepiMAP; Mlawula; 05/01/2018; Kate Braun; LepiMAP 638883



Lamoria sp.

UCT-ADU LepiMAP

- UCT-ADU LepiMAP; Mlawula; 18/01/2017; Kate Braun; LepiMAP 612640
- UCT-ADU LepiMAP; Pine Valley; 24/01/2017; Kate Braun; LepiMAP 613219
- UCT-ADU LepiMAP; Malolotja; 02/02/2017; Kate Braun; LepiMAP 614346



- UCT-ADU LepiMAP; Pine Valley; 03/02/2017; Kate Braun; LepiMAP 614458



- UCT-ADU LepiMAP; Pine Valley; 07/02/2017; Kate Braun; LepiMAP 615031
- UCT-ADU LepiMAP; Pine Valley; 10/02/2017; Kate Braun; LepiMAP 615244
- UCT-ADU LepiMAP; Pine Valley; 15/03/2017; Kate Braun; LepiMAP 618039
- UCT-ADU LepiMAP; Pine Valley; 17/03/2017; Kate Braun; LepiMAP 618177
- UCT-ADU LepiMAP; Pine Valley; 18/04/2017; Kate Braun; LepiMAP 621828
- UCT-ADU LepiMAP; Pine Valley; 25/09/2017; Kate Braun; LepiMap 632251
- UCT-ADU LepiMAP; Pine Valley; 15/10/2017; Kate Braun; LepiMAP 633120
- UCT-ADU LepiMAP; Pine Valley; 13/11/2017; Kate Braun; LepiMAP 634799
- UCT-ADU LepiMAP; Pine Valley; 20/11/2017; Kate Braun; LepiMAP 635378
- UCT-ADU LepiMAP; Pine Valley; 17/12/2017; Kate Braun; LepiMAP 636426
- UCT-ADU LepiMAP; Mlawula; 04/01/2018; Kate Braun; LepiMAP 638802
- UCT-ADU LepiMAP; Pine Valley; 20/01/2018; Kate Braun; LepiMAP 639511
- UCT-ADU LepiMAP; Pine Valley; 29/01/2018; Kate Braun; LepiMAP 639978
- UCT-ADU LepiMAP; Pine Valley; 06/02/2018; Kate Braun; LepiMAP 640378
- UCT-ADU LepiMAP; Pine Valley; 14/02/2018; Kate Braun; LepiMAP 640930
- UCT-ADU LepiMAP; Pine Valley; 14/02/2018; Kate Braun; LepiMAP 640934
- UCT-ADU LepiMAP; Pine Valley; 14/03/2018; Kate Braun; LepiMAP 642761

- UCT-ADU LepiMAP; Pine Valley; 06/04/2018; Kate Braun; LepiMAP 644934
- UCT-ADU LepiMAP; Pine Valley; 05/05/2018; Kate Braun; LepiMAP 647670
- UCT-ADU LepiMAP; Pine Valley; 02/10/2018; Kate Braun; LepiMAP 659412
- UCT-ADU LepiMAP; Pine Valley; 11/10/2018; Kate Braun; LepiMAP 660290

Pyralidae: Phycitinae

Biafra separatella Ragonot, 1888

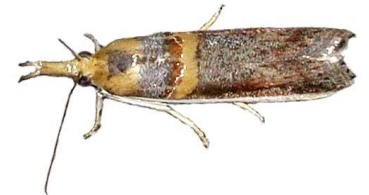
Fromoths: Bartsch (2016)

(*Maliarpha separatella*)

Etiella zinckenella (Treitschke, 1832)

UCT-ADU LepiMap

- UCT-ADU LepiMAP; Pine Valley; 28/09/2018; Kate Braun; LepiMAP 658891
- UCT-ADU LepiMAP; Pine Valley; 09/11/2017; Kate Braun; LepiMAP 634482
- UCT-ADU LepiMAP; Pine Valley; 29/09/2018; Kate Braun; LepiMAP 658915
- UCT-ADU LepiMAP; Pine Valley; 26/10/2018; Kate Braun; LepiMAP 660849
- UCT-ADU LepiMAP; Pine Valley; 18/12/2017; Kate Braun; LepiMAP 636512
- UCT-ADU LepiMAP; Pine Valley; 14/04/2017; Kate Braun; LepiMAP 621146
- UCT-ADU LepiMAP; Pine Valley; 12/04/2017; Kate Braun; LepiMAP 620832
- UCT-ADU LepiMAP; Pine Valley; 25/02/2017; Kate Braun; LepiMAP 617094
- UCT-ADU LepiMAP; Pine Valley; 30/01/2017; Kate Braun; LepiMAP 614080
- UCT-ADU LepiMAP; Pine Valley; 29/11/2016; Kate Braun; LepiMAP 610438
- UCT-ADU LepiMAP; Pine Valley; 11/10/2018; Kate Braun; LepiMAP 660280
- UCT-ADU LepiMAP; Pine Valley; 11/09/2017; Kate Braun; LepiMap 632036



Gaana viridella (Ragonot, 1888)

(*Dysphyllia viridella*)

UCT-ADU LepiMAP

- UCT-ADU LepiMAP; Pine Valley; 13/08/2017; Kate Braun; LepiMAP 630038



Hypargyria metalliferella Ragonot, 1888

UCT-ADU LepiMap

- UCT-ADU LepiMAP; Mlawula; 18/01/2017; Kate Braun; LepiMAP 612650
- UCT-ADU LepiMAP; Pine Valley; 12/11/2017; Kate Braun; LepiMAP 634695
- UCT-ADU LepiMAP; Pine Valley; 05/04/2017; Kate Braun; LepiMAP 620287
- UCT-ADU LepiMAP; Pine Valley; 29/03/2017; Kate Braun; LepiMAP 619379
- UCT-ADU LepiMAP; Pine Valley; 24/02/2017; Kate Braun; LepiMAP 616544
- UCT-ADU LepiMAP; Pine Valley; 17/02/2017; Kate Braun; LepiMAP 616544

Braun; LepiMAP 615832

- UCT-ADU LepiMAP; Mlawula; 18/01/2017; Kate Braun; LepiMAP 612656
- UCT-ADU LepiMAP; Mlawula; 18/01/2017; Kate Braun; LepiMAP 612633
- UCT-ADU LepiMAP; Pine Valley; 15/02/2017; Kate Braun; LepiMAP 615698



Peoria sp.

UCT-ADU LepiMap

- UCT-ADU LepiMAP; Pine Valley; 13/08/2017; Kate Braun; LepiMAP 630022
- UCT-ADU LepiMAP; Pine Valley; 24/01/2018; Kate Braun; LepiMAP 639713
- UCT-ADU LepiMAP; Pine Valley; 23/12/2017; Kate Braun; LepiMAP 636817
- UCT-ADU LepiMAP; Pine Valley; 05/04/2017; Kate Braun; LepiMAP 620277
- UCT-ADU LepiMAP; Pine Valley; 11/02/2017; Kate Braun; LepiMAP 615283
- UCT-ADU LepiMAP; Pine Valley; 30/01/2017; Kate Braun; LepiMAP 614071
- UCT-ADU LepiMAP; Pine Valley; 19/04/2017; Kate Braun; LepiMAP 621944
- UCT-ADU LepiMAP; Pine Valley; 20/01/2018; Kate Braun; LepiMAP 639512

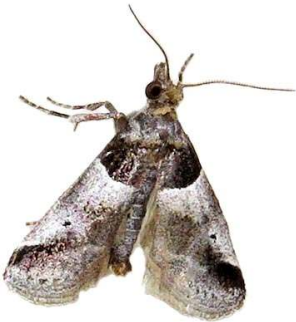


**Pyralidae: Pyralinae
(not identified)**

Delopterus sp. 1

UCT-ADU LepiMap

- UCT-ADU LepiMAP; Mlawula; 04/01/2018; Kate Braun; LepiMAP 638834



Delopterus sp. 2

UCT-ADU LepiMap

- UCT-ADU LepiMAP; Mlawula; 05/01/2018; Kate Braun; LepiMAP 638901
- UCT-ADU LepiMAP; Mlawula; 20/12/2018; Kate Braun; LepiMAP 666206



Loryma basalis (Walker, 1866)

UCT-ADU LepiMap

(*Aglossa basalis*)

- UCT-ADU LepiMAP; Pine Valley; 24/02/2017; Kate Braun; LepiMAP 616545
- UCT-ADU LepiMAP; Pine Valley; 03/04/2018; Kate Braun; LepiMAP 644839
- UCT-ADU LepiMAP; Pine Valley; 09/03/2018; Kate Braun; LepiMAP 642596
- UCT-ADU LepiMAP; Pine Valley; 06/02/2018; Kate Braun; LepiMAP 640358
- UCT-ADU LepiMAP; Pine Valley; 12/01/2018; Kate Braun; LepiMAP 638941
- UCT-ADU LepiMAP; Pine Valley; 03/01/2018; Kate Braun; LepiMAP 637951
- UCT-ADU LepiMAP; Pine Valley; 16/12/2017; Kate Braun; LepiMAP 636294
- UCT-ADU LepiMAP; Pine Valley; 13/11/2017; Kate Braun; LepiMAP 634792
- UCT-ADU LepiMAP; Pine Valley; 16/10/2017; Kate Braun; LepiMAP 633183
- UCT-ADU LepiMAP; Pine Valley; 03/04/2017; Kate Braun; LepiMAP 620120
- UCT-ADU LepiMAP; Pine Valley; 28/03/2017; Kate Braun; LepiMAP 619304
- UCT-ADU LepiMAP; Pine Valley; 06/03/2017; Kate Braun; LepiMAP 617403
- UCT-ADU LepiMAP; Pine Valley; 17/02/2017; Kate Braun; LepiMAP 615917
- UCT-ADU LepiMAP; Pine Valley; 17/02/2017; Kate Braun; LepiMAP 615778
- UCT-ADU LepiMAP; Pine Valley; 15/02/2017; Kate Braun; LepiMAP 615692
- UCT-ADU LepiMAP; Mlawula; 06/09/2017; Kate Braun; LepiMap 631945
- UCT-ADU LepiMAP; Mlawula; 24/03/2017; Kate Braun; LepiMAP 619051
- UCT-ADU LepiMAP; Pine Valley; 02/10/2018; Kate Braun; LepiMAP 659390
- UCT-ADU LepiMAP; Pine Valley; 11/03/2017; Kate Braun; LepiMAP 617620



Loryma sentiualis Walker, 1859

UCT-ADU LepiMap

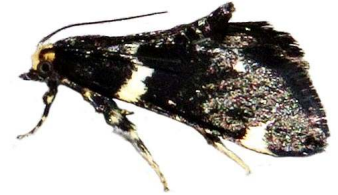
- UCT-ADU LepiMAP; Pine Valley; 11/09/2017; Kate Braun; LepiMap 632037



Melanalis perfusca Hampson, 1906

UCT-ADU LepiMap

- UCT-ADU LepiMAP; Pine Valley; 03/01/2018; Kate Braun; LepiMAP 637947



Melanalis sp.

UCT-ADU LepiMap

(*Calomacalla sp.*)

- UCT-ADU LepiMAP; Pine Valley; 15/02/2017; Kate Braun; LepiMAP 615671



Tegulifera oblunata (Warren, 1897)

UCT-ADU LepiMap

(*Zitha oblunata*)

- UCT-ADU LepiMAP; Pine Valley; 09/12/2017; Kate Braun; LepiMAP 635793
- UCT-ADU LepiMAP; Pine Valley; 16/12/2017; Kate Braun; LepiMAP 636267
- UCT-ADU LepiMAP; Pine Valley; 24/12/2017; Kate Braun; LepiMAP 636911



Zitha zonalis (Warren, 1897)
UCT-ADU LepiMap
(*Tegulifera zonalis*)

- UCT-ADU LepiMAP; Pine Valley; 10/02/2017; Kate Braun; LepiMAP 615253
- UCT-ADU LepiMAP; Pine Valley; 11/02/2017; Kate Braun; LepiMAP 615290
- UCT-ADU LepiMAP; Pine Valley; 11/02/2017; Kate Braun; LepiMAP 615290
- UCT-ADU LepiMAP; Pine Valley; 31/12/2017; Kate Braun; LepiMAP 637796
- UCT-ADU LepiMAP; Pine Valley; 20/01/2018; Kate Braun; LepiMAP 639508
- UCT-ADU LepiMAP; Pine Valley; 24/01/2018; Kate Braun; LepiMAP 639736
- UCT-ADU LepiMAP; Pine Valley; 06/02/2018; Kate Braun; LepiMAP 640364



Tyndis sp.
UCT-ADU LepiMap

- UCT-ADU LepiMAP; Phophonyane; 05/02/2006; Roland H; LepiMAP 556585



Pyralidae: Pyralinae: Endotrichini

Endotricha consobrinalis consobrinalis
Zeller, 1852
UCT-ADU LepiMap

- UCT-ADU LepiMAP; Mlawula; 03/03/2018; Kate Braun; LepiMAP 642467
- UCT-ADU LepiMAP; Pine Valley; 21/12/2017; Kate Braun; LepiMAP 636650
- UCT-ADU LepiMAP; Pine Valley; 25/09/2018; Kate Braun; LepiMAP 658563



Endotricha erythralis Mabille, 1900
UCT-ADU LepiMap

- UCT-ADU LepiMAP; Pine Valley; 10/02/2018; Kate Braun; LepiMAP 640599
- UCT-ADU LepiMAP; Pine Valley; 06/02/2018; Kate Braun; LepiMAP 640353
- UCT-ADU LepiMAP; Pine Valley; 28/10/2018; Kate Braun; LepiMAP 661062
- UCT-ADU LepiMAP; Pine Valley; 02/10/2018; Kate Braun; LepiMAP 659382
- UCT-ADU LepiMAP; Pine Valley; 09/03/2018; Kate Braun; LepiMAP 642588
- UCT-ADU LepiMAP; Pine Valley; 16/01/2018; Kate Braun; LepiMAP 639444
- UCT-ADU LepiMAP; Pine Valley; 13/03/2018; Kate Braun; LepiMAP 642759
- UCT-ADU LepiMAP; Pine Valley; 03/01/2018; Kate Braun; LepiMAP 637956
- UCT-ADU LepiMAP; Pine Valley; 16/12/2017; Kate Braun; LepiMAP 636266
- UCT-ADU LepiMAP; Pine Valley; 06/11/2017; Kate Braun; LepiMAP 634293
- UCT-ADU LepiMAP; Pine Valley; 17/02/2017; Kate Braun; LepiMAP 615851
- UCT-ADU LepiMAP; Pine Valley; 20/01/2018; Kate Braun; LepiMAP 639502



Pyralidae: Pyralinae: Pyralini

Aglossa inconspicua Butler, 1875

Malotlja and Mlawula Checklists
(*Hypaena inconspicua*)

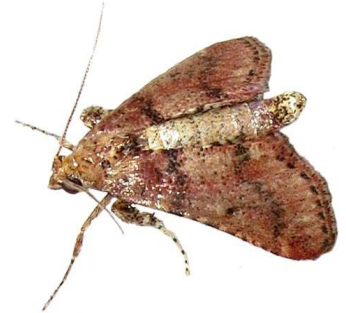
Bostra albilineata Warren, 1891
UCT-ADU LepiMap

- UCT-ADU LepiMAP; Malotlja; 02/02/2017; Kate Braun; LepiMAP 614354



Bostra dentilinealis Hampson, 1917
UCT-ADU LepiMap

- UCT-ADU LepiMAP; Pine Valley; 02/04/2018; Kate Braun; LepiMAP 644830
- UCT-ADU LepiMAP; Pine Valley; 15/02/2017; Kate Braun; LepiMAP 615678



Bostra xanthorhodalis Hampson, 1906
UCT-ADU LepiMap

- UCT-ADU LepiMAP; Pine Valley; 12/01/2018; Kate Braun; LepiMAP 638954
- UCT-ADU LepiMAP; Pine Valley; 01/02/2018; Kate Braun; LepiMAP 640103
- UCT-ADU LepiMAP; Pine Valley; 04/02/2017; Kate Braun; LepiMAP 614625
- UCT-ADU LepiMAP; Pine Valley; 19/01/2018; Kate Braun; LepiMAP 639467
- UCT-ADU LepiMAP; Pine Valley; 09/12/2017; Kate Braun; LepiMAP 635801
- UCT-ADU LepiMAP; Pine Valley; 10/02/2017; Kate Braun; LepiMAP 615252
- UCT-ADU LepiMAP; Pine Valley; 01/02/2017; Kate Braun; LepiMAP 614236
- UCT-ADU LepiMAP; Pine Valley; 16/02/2015; Kate Braun; LepiMAP 563570
- UCT-ADU LepiMAP; Pine Valley; 09/01/2017; Kate Braun; LepiMAP 612483



Bostra sp.
UCT-ADU LepiMap

- UCT-ADU LepiMAP; Pine Valley; 17/02/2017; Kate Braun; LepiMAP 614926



- UCT-ADU LepiMAP; Pine Valley; 17/03/2017; Kate Braun; LepiMAP 618141
- UCT-ADU LepiMAP; Pine Valley; 26/10/2018; Kate Braun; LepiMAP 660853



Stemmatophora achromalis (Hampson, 1906)

UCT-ADU LepiMap
(*Actenia achromalis*)

- UCT-ADU LepiMAP; Pine Valley; 16/02/2017; Kate Braun; LepiMAP 615753

Arniocera erythropyga (Wallengren, 1860)

Malolotja and Mlawula Checklists

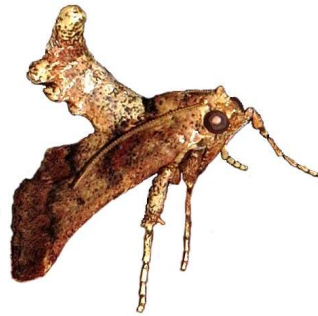
- iSpot; Lubombo District; 19/10/2014; Klerk; iSpot 623022



Hypsopygia nostralis (Guenée, 1854)

UCT-ADU LepiMap

- UCT-ADU LepiMAP; Pine Valley; 11/02/2017; Kate Braun; LepiMAP 615295
- UCT-ADU LepiMAP; Pine Valley; 15/02/2017; Kate Braun; LepiMAP 615691



Stemmatophora depressalis Walker, 1862

UCT-ADU LepiMap

- UCT-ADU LepiMAP; Pine Valley; 17/02/2017; Kate Braun; LepiMAP 615938
- UCT-ADU LepiMAP; Pine Valley; 20/01/2018; Kate Braun; LepiMAP 639501
- UCT-ADU LepiMAP; Pine Valley; 24/01/2018; Kate Braun; LepiMAP 639730
- UCT-ADU LepiMAP; Pine Valley; 25/12/2018; Kate Braun; LepiMAP 666235
- UCT-ADU LepiMAP; Pine Valley; 29/12/2018; Kate Braun; LepiMAP 666637

Thyrididae: Siculodinae

Rhodoneura flavicilia Hampson, 1906

UCT-ADU LepiMap

- UCT-ADU LepiMAP; Mlawula; 24/03/2017; Kate Braun; LepiMAP 619043
- UCT-ADU LepiMAP; Mlawula; 03/03/2018; Kate Braun; LepiMAP 642488
- UCT-ADU LepiMAP; Pine Valley; 13/08/2017; Kate Braun; LepiMAP 630019



Pyralis albilautalis Warren, 1891

UCT-ADU LepiMap

- UCT-ADU LepiMAP; Pine Valley; 27/11/2018; Kate Braun; LepiMAP 663393
- UCT-ADU LepiMAP; Pine Valley; 02/10/2018; Kate Braun; LepiMAP 659340



Thyridoidea

Thyrididae: Charideinae

Arniocera auriguttata Hopffer, 1857

Malolotja and Mlawula Checklists

- Project Noah; Mlawula; 03/11/2013; Tina Petterson; PN 76636012

Tineoidea

Eriocottidae: Compsocteninae

Compsoctena aedifica aedifica (Meyrick, 1908)

UCT-ADU LepiMap Swaziland Species List Nov 2016



Compsoctena sp.

UCT-ADU LepiMap

- UCT-ADU LepiMAP; Pine Valley; 30/10/2017; Kate Braun; LepiMAP 634030
- UCT-ADU LepiMAP; Pine Valley; 13/11/2017; Kate Braun; LepiMAP 634801
- UCT-ADU LepiMAP; Pine Valley; 15/11/2017; Kate Braun; LepiMAP 635126
- UCT-ADU LepiMAP; Pine Valley; 20/11/2017; Kate Braun; LepiMAP 635345
- UCT-ADU LepiMAP; Pine Valley; 09/12/2017; Kate Braun; LepiMAP 635776
- UCT-ADU LepiMAP; Pine Valley; 16/12/2017; Kate Braun; LepiMAP 636275
- UCT-ADU LepiMAP; Pine Valley; 23/12/2017; Kate Braun; LepiMAP 636825
- UCT-ADU LepiMAP; Mlawula; 06/01/2018; Kate Braun; LepiMAP 638919
- UCT-ADU LepiMAP; Pine Valley; 12/01/2018; Kate Braun; LepiMAP 638945
- UCT-ADU LepiMAP; Pine Valley; 15/10/2018; Kate Braun; LepiMAP 660459



Pyralis farinalis Linnaeus, 1758

UCT-ADU LepiMap

- UCT-ADU LepiMAP; Pine Valley; 24/12/2017; Kate Braun; LepiMAP 636912





Tortricoidea

Tortricidae: Olethreutinae: Olethreutini

(not identified)

- UCT-ADU LepiMap
- UCT-ADU LepiMAP; Pine Valley; 31/01/2017; Kate Braun; LepiMAP 614167
 - UCT-ADU LepiMAP; Pine Valley; 31/01/2017; Kate Braun; LepiMAP 614183
 - UCT-ADU LepiMAP; Pine Valley; 01/02/2017; Kate Braun; LepiMAP 614259
 - UCT-ADU LepiMAP; Pine Valley; 03/02/2017; Kate Braun; LepiMAP 614479

Eccopsis incultana (Walker, 1863) UCT-ADU LepiMAP

- UCT-ADU LepiMAP; Pine Valley; 12/03/2017; Kate Braun; LepiMAP 617744
- UCT-ADU LepiMAP; Pine Valley; 04/04/2017; Kate Braun; LepiMAP 620241
- UCT-ADU LepiMAP; Pine Valley; 12/04/2017; Kate Braun; LepiMAP 620835



Malolotia malolotiana Razowski, 2015 AfroMoths: TMSA

- AfroMoths; Malolotja; 04/12/2011; G Bassi;

Megalota lobotona (Meyrick, 1921) AfroMoths: TMSA

Metendothenia balanacma (Meyrick, 1914) AfroMoths: TMSA

Tortricidae: Tortricinae: Archipini

Orilesa olearis (Meyrick, 1912) AfroMoths: TMSA

Tortricidae: Tortricinae: Tortricini

(not identified)

- UCT-ADU LepiMap
- UCT-ADU LepiMAP; Pine Valley; 06/02/2017; Kate Braun; LepiMAP 614938
 - UCT-ADU LepiMAP; Pine Valley; 03/02/2017; Kate Braun; LepiMAP 614478
 - UCT-ADU LepiMAP; Pine Valley; 03/02/2017; Kate Braun; LepiMAP 614604
 - UCT-ADU LepiMAP; Pine Valley; 04/02/2017; Kate Braun; LepiMAP 614671
 - UCT-ADU LepiMAP; Pine Valley; 04/02/2017; Kate Braun; LepiMAP 614674
 - UCT-ADU LepiMAP; Pine Valley; 04/02/2017; Kate Braun; LepiMAP 614674

- Braun; LepiMAP 614681
- UCT-ADU LepiMAP; Pine Valley; 15/02/2017; Kate Braun; LepiMAP 615689
 - UCT-ADU LepiMAP; Pine Valley; 04/02/2017; Kate Braun; LepiMAP 614692
 - UCT-ADU LepiMAP; Pine Valley; 23/01/2017; Kate Braun; LepiMAP 613209
 - UCT-ADU LepiMAP; Pine Valley; 05/02/2017; Kate Braun; LepiMAP 614925
 - UCT-ADU LepiMAP; Pine Valley; 06/02/2017; Kate Braun; LepiMAP 614937
 - UCT-ADU LepiMAP; Pine Valley; 07/02/2017; Kate Braun; LepiMAP 615046
 - UCT-ADU LepiMAP; Pine Valley; 07/02/2017; Kate Braun; LepiMAP 615047
 - UCT-ADU LepiMAP; Pine Valley; 11/02/2017; Kate Braun; LepiMAP 615284
 - UCT-ADU LepiMAP; Pine Valley; 15/02/2017; Kate Braun; LepiMAP 615687
 - UCT-ADU LepiMAP; Pine Valley; 03/02/2017; Kate Braun; LepiMAP 614444
 - UCT-ADU LepiMAP; Pine Valley; 06/02/2017; Kate Braun; LepiMAP 614931
 - UCT-ADU LepiMAP; Pine Valley; 11/01/2017; Kate Braun; LepiMAP 612488
 - UCT-ADU LepiMAP; Pine Valley; 01/02/2017; Kate Braun; LepiMAP 614280
 - UCT-ADU LepiMAP; Pine Valley; 29/01/2017; Kate Braun; LepiMAP 613927
 - UCT-ADU LepiMAP; Malolotja; 02/02/2017; Kate Braun; LepiMAP 614353
 - UCT-ADU LepiMAP; Malolotja; 02/02/2017; Kate Braun; LepiMAP 614369
 - UCT-ADU LepiMAP; Pine Valley; 20/02/2015; Kate Braun; LepiMAP 564030
 - UCT-ADU LepiMAP; Pine Valley; 11/01/2016; Kate Braun; LepiMAP 587004
 - UCT-ADU LepiMAP; Pine Valley; 23/12/2016; Kate Braun; LepiMAP 611401
 - UCT-ADU LepiMAP; Pine Valley; 13/01/2017; Kate Braun; LepiMAP 612502
 - UCT-ADU LepiMAP; Pine Valley; 29/01/2017; Kate Braun; LepiMAP 613924
 - UCT-ADU LepiMAP; Pine Valley; 30/01/2017; Kate Braun; LepiMAP 614062
 - UCT-ADU LepiMAP; Pine Valley; 30/01/2017; Kate Braun; LepiMAP 614083
 - UCT-ADU LepiMAP; Pine Valley; 30/01/2017; Kate Braun; LepiMAP 614109
 - UCT-ADU LepiMAP; Pine Valley; 30/01/2017; Kate Braun; LepiMAP 614122
 - UCT-ADU LepiMAP; Pine Valley; 01/02/2017; Kate Braun; LepiMAP 614227
 - UCT-ADU LepiMAP; Pine Valley; 01/02/2017; Kate Braun; LepiMAP 614262
 - UCT-ADU LepiMAP; Pine Valley; 02/02/2016; Kate Braun; LepiMAP 587963

Clepsis gnathocera Razowski, 2006 AfroMoths: TMSA

- AfroMoths; Malolotja; 02/01/1995; N J Duke;

Epichoristodes dorsiplagana (Walsingham, 1881)

- UCT-ADU LepiMAP
- UCT-ADU LepiMAP; Pine Valley; 05/04/2017; Kate Braun; LepiMAP 620276
 - UCT-ADU LepiMAP; Pine Valley; 10/04/2017; Kate Braun; LepiMAP 620723
 - UCT-ADU LepiMAP; Pine Valley; 06/03/2017; Kate Braun; LepiMAP 617386
 - UCT-ADU LepiMAP; Pine Valley; 12/12/2017; Kate Braun; LepiMAP 636053
 - UCT-ADU LepiMAP; Pine Valley; 17/02/2017; Kate Braun; LepiMAP 615898



Yponomeutoidea

Plutellidae

Plutella xylostella (Linnaeus, 1758) UCT-ADU LepiMap

- UCT-ADU LepiMAP; Pine Valley; 02/11/2015; Kate Braun; LepiMAP 582309
- UCT-ADU LepiMAP; Pine Valley; 13/12/2015; Kate Braun; LepiMAP 586768
- UCT-ADU LepiMAP; Pine Valley; 29/11/2016; Kate Braun; LepiMAP 610435
- UCT-ADU LepiMAP; Pine Valley; 30/10/2017; Kate Braun; LepiMAP 634029
- UCT-ADU LepiMAP; Pine Valley; 06/11/2017; Kate Braun; LepiMAP 634284
- UCT-ADU LepiMAP; Pine Valley; 15/11/2017; Kate Braun; LepiMAP 635127
- UCT-ADU LepiMAP; Pine Valley; 13/12/2015; Kate Braun; LepiMAP 586767



Yponomeutidae: Yponomeutinae

Yponomeuta fumigata Zeller, 1852 Malolotja and Mlawula Checklists (*Yponomeuta glaphyropis*)

Yponomeuta strigillata Zeller, 1852 Malolotja and Mlawula Checklists

- UCT-ADU LepiMAP; Pine Valley; 24/12/2017; Kate Braun; LepiMAP 636900
- UCT-ADU LepiMAP; Pine Valley; 20/01/2018; Kate Braun; LepiMAP 639505
- UCT-ADU LepiMAP; Pine Valley; 28/10/2018; Kate Braun; LepiMAP 661055
- UCT-ADU LepiMAP; Pine Valley; 06/02/2018; Kate Braun; LepiMAP 640389
- UCT-ADU LepiMAP; Pine Valley; 24/02/2018; Kate Braun; LepiMAP 641447
- UCT-ADU LepiMAP; Pine Valley; 14/03/2018; Kate Braun; LepiMAP 642768
- UCT-ADU LepiMAP; Pine Valley; 30/09/2018; Kate Braun; LepiMAP 659125
- UCT-ADU LepiMAP; Pine Valley; 15/10/2018; Kate Braun; LepiMAP 660458
- UCT-ADU LepiMAP; Pine Valley; 12/08/2017; Kate Braun; LepiMAP 629992
- UCT-ADU LepiMAP; Pine Valley; 16/12/2017; Kate Braun; LepiMAP 636298
- UCT-ADU LepiMAP; Pine Valley; 09/10/2018; Kate Braun; LepiMAP 660110
- UCT-ADU LepiMAP; Pine Valley; 17/02/2017; Kate Braun; LepiMAP 615879
- UCT-ADU LepiMAP; Pine Valley; 09/12/2017; Kate Braun; LepiMAP 635768
- UCT-ADU LepiMAP; Pine Valley; 22/01/2017; Kate Braun; LepiMAP 613088
- UCT-ADU LepiMAP; Pine Valley; 17/03/2017; Kate Braun; LepiMAP 618154
- UCT-ADU LepiMAP; Pine Valley; 04/04/2017; Kate Braun; LepiMAP 618154

Braun; LepiMAP 620232

- UCT-ADU LepiMAP; Pine Valley; 19/04/2017; Kate Braun; LepiMAP 621967
- UCT-ADU LepiMAP; Pine Valley; 15/10/2017; Kate Braun; LepiMAP 633121
- UCT-ADU LepiMAP; Pine Valley; 12/11/2017; Kate Braun; LepiMAP 634715
- UCT-ADU LepiMAP; Pine Valley; 20/11/2017; Kate Braun; LepiMAP 635366
- UCT-ADU LepiMAP; Pine Valley; 06/11/2017; Kate Braun; LepiMAP 634288



Zygaenoidea

Lacturidae

Gymnogramma pyrozancla Meyrick, 1911

Project Noah (Photos by Tina Petterson)

- Project Noah; Mlawula; 10/11/2013; Tina Petterson; PN 82096035



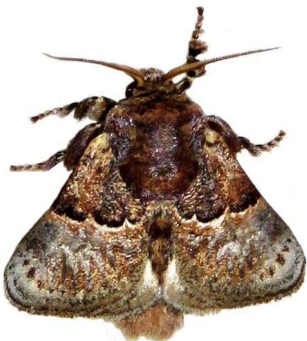
Limacodidae: Chrysopolominae

Hamartia medora medora Hering, 1937
Malolotja and Mlawula Checklists
(*Hamartia medora*)

Limacodidae: Limacodinae

Afrobirthama flaccidia (Druce, 1899)
UCT-ADU LepiMap

- UCT-ADU LepiMAP; Mlawula; 24/03/2017; Kate Braun; LepiMAP 619034



Coenobasis amoena Felder, 1874
UCT-ADU LepiMap Swaziland Species
List Nov 2016

- UCT-ADU LepiMAP; Mlawula; 11/11/2013; de

Beer Len ; Jemma de Beer; LepiMAP 37545



Crothaema schoutedeni Hering, 1954
Malolotja and Mlawula Checklists

Latoia latistriga (Walker, 1855)
Malolotja and Mlawula Checklists

- UCT-ADU LepiMAP; Mlawula; 18/01/2017; Kate Braun; LepiMAP 612778



Latoia viridimixta Janse, 1964
UCT-ADU LepiMap

Latoia vivida (Walker, 1865)

- Malolotja and Mlawula Checklists
- NMR Insecta NMR996800109563 ; Mbabane; 18/02/1990; NMR Insecta
 - NMR Insecta NMR996800109563; Mbabane; 18/02/1990; Insecta
 - UCT-ADU LepiMAP; Mhlambanyatsi; 24/11/2007; Roland H; LepiMAP 35172
 - UCT-ADU LepiMAP; Pine Valley; 13/12/2015; Kate Braun; LepiMAP 586763



Micraphe lateritia Karsch, 1896
UCT-ADU LepiMap

- UCT-ADU LepiMAP; Pine Valley; 17/12/2017; Kate Braun; LepiMAP 636419



Neogavara imitans Janse, 1964
Malolotja and Mlawula Checklists

- UCT-ADU LepiMAP; Mlawula; 06/01/2018; Kate Braun; LepiMAP 638923
- UCT-ADU LepiMAP; Mlawula; 18/01/2017; Kate Braun; LepiMAP 612655
- UCT-ADU LepiMAP; Mlawula; 04/01/2018; Kate Braun; LepiMAP 638821



Neomocena convergens (Hering, 1928)
Malolotja and Mlawula Checklists

Omocenooides isophanes Janse, 1964
UCT-ADU LepiMap

- UCT-ADU LepiMAP; Pine Valley; 21/11/2017; Kate Braun; LepiMAP 635386
- UCT-ADU LepiMAP; Pine Valley; 26/11/2017; Kate Braun; LepiMAP 635387
- UCT-ADU LepiMAP; Pine Valley; 12/12/2017; Kate Braun; LepiMAP 636036



Pantoctenia gemmans Felder, 1874
Malolotja and Mlawula Checklists

Probalintha inclusa Walker, 1865
Afromoths: TMSA

Taeda aetitis Wallengren, 1863
Afromoths: Krüger (2005)

- AfroMoths; Malolotja; 26/12/1997; N J Duke; TMSA
- UCT-ADU LepiMAP; Pine Valley; 09/11/2017; Kate Braun; LepiMAP 662058



Zorostola melanoxantha Janse, 1964
Afromoths: Hacker (2016)