

# Preliminary Eswatini Moths Checklist - PROVISIONAL - May 2023

## Part 1. Bombycoidea & Lasiocampoidea

Illustrations are from photos of live moths. Those marked with an asterisk are not from Eswatini, and are for reference only.

### Bombycoidea

Classification from Kitching et. al. (2018) A global checklist of the Bombycoidea (Insecta: Lepidoptera). Species names as per AfroMoths ([www.afromoths.com](http://www.afromoths.com)) as at October 2018, with corrections by R. Oberprieler.

#### Bombycidae: Bombycinae

*Ocinara ficicola* (Westwood & Ormerod, 1889)

UCT-ADU LepiMap

(*Racinoa ficicola*, *Ocinara ficicola ficicola*)



*Poloma angulata* Walker, 1855  
Malolotja and Mlawula Checklists



*Poloma castanea* Aurivillius, 1901  
Malolotja and Mlawula Checklists

#### Eupterotidae: Janinae

*Rhodopteryana rhodoptera* (Gerstaecker, 1871)

UCT-ADU LepiMap



*Tissanga pretoriae* (Distant, 1892)  
Malolotja and Mlawula Checklists



#### Eupterotidae: Striphnopteryginae

*Janomima mariana* (White, 1843)  
iNaturalist

*Lichenopteryx despecta* C. & F.Felder, 1874  
UCT-ADU LepiMap



#### Brahmaeidae:

*Spiramiopsis comma* Hampson, 1901  
Metamorphosis Vol 27



\*

#### Eupterotidae: Ganisa-Group

*Hemijana variegata* Rothschild, 1917  
Malolotja and Mlawula Checklists



*Tantaliana tantalus* (Herrich-Schäffer, 1854)  
Malolotja and Mlawula Checklists  
(*Jana tantalus*)



*Phiala costipuncta* (Herrich-Schäffer, 1855)  
UCT-ADU LepiMap



*Phiala dasypoda* Wallengren, 1860  
Malolotja and Mlawula Checklists



***Phiala marshalli*** Aurivillius, 1904  
Malolotja and Mlawula Checklists



***Phyllalia patens*** (Boisduval, 1847)  
Malolotja and Mlawula Checklists



***Striphnopteryx edulis*** (Boisduval, 1847)  
Malolotja and Mlawula Checklists



**Saturniidae: Bunaeinae: Bunaeini**

***Aurivillius fuscus*** (Rothschild, 1895)  
Malolotja and Mlawula Checklists  
(*Aurivillius aratus*, *Aurivillius fusca*)



***Bunaea alcinoe*** (Stoll, 1780)  
Malolotja and Mlawula Checklists



***Bunaeopsis arabella*** (Aurivillius, 1893)  
R Oberprieler



***Cinabra hyperbius*** (Westwood, 1881)  
R Oberprieler  
(*Cinabra hyperbius hyperbius*)



***Cirina forda forda*** (Westwood, 1849)  
R Oberprieler  
(*Cirina forda*)



***Gonimbrasia bubo*** (Bouvier, 1930)  
R Oberprieler  
(*Nudaurelia clarki*, *Gonimbrasia clarki*)



***Gonimbrasia wahlbergii*** (Boisduval, 1847)  
Malolotja and Mlawula Checklists  
(*Nudaurelia wahlbergii*, *Imbrasia wahlbergi*)



***Gonimbrasia zambesina*** (Walker, 1865)  
UCT-ADU LepiMAP  
(*Imbrasia zambesina*)



***Gynanisa maja*** (Klug, 1836)  
Malolotja and Mlawula Checklists



***Heniocha apollonia*** (Cramer, 1779)  
R Oberprieler  
(*Heniocha apollonia apollonia*)



***Heniocha dyops*** (Maassen, 1872)  
Malolotja and Mlawula Checklists



***Heniocha marnois*** (Rogenhofer, 1891)  
R Oberprieler



***Lobobunaea saturnus*** (Westwood, 1849)  
Malolotja and Mlawula Checklists  
(*Lobobunaea angasana*)



***Melanocera menippe*** (Westwood, 1849)  
Project Noah (Photos by Tina Petterson)





***Pseudobunaea natalensis*** (Aurivillius, 1893)  
Malolotja and Mlawula Checklists



***Pseudobunaea tyrrena tyrrena***  
(Westwood, 1849)  
R Oberprieler  
(*Pseudobunaea tyrrena*)

**Saturniidae: Bunaeinae: Micragonini**

***Campimoptilum kuntzei*** (Dewitz, 1881)  
Metamorphosis Vol 27, UCT-ADU LepiMap  
(*Goodia kuntzei*)



***Holocerina smilax*** (Westwood, 1849)  
Malolotja and Mlawula Checklists  
(*Holocerina smilax smilax*)



***Ludia delegorguei*** (Boisduval, 1847)  
UCT-ADU LepiMAP



***Ludia goniata*** Rothschild, 1907  
Malolotja and Mlawula Checklists



**Saturniidae: Bunaeinae: Urotini**

***Pselaphelia flavivitta*** (Walker, 1862)  
R Oberprieler



***Pseudaphelia apollinaris*** (Boisduval, 1847)  
UCT-ADU LepiMap  
(*Pseudaphelia apollinaris apollinaris*)



***Tagoropsis flavinata*** (Walker, 1865)  
R Oberprieler



***Urota sinope*** (Westwood, 1849)  
UCT-ADU LepiMAP



***Usta tersichore*** (Maassen & Weyding, 1885)  
Malolotja and Mlawula Checklists



**Saturniidae: Saturniinae: Attacini**

***Epiphora mythimnia*** (Westwood, 1849)  
Project Noah (Photos by Tina Petterson)



**Saturniidae: Saturniinae: Saturniini**

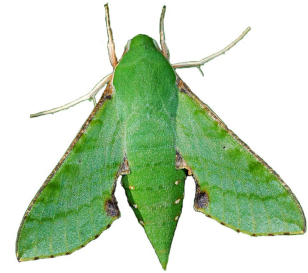
***Argema mimosae*** (Boisduval, 1847)  
UCT-ADU LepiMap Swaziland Species List Nov  
2016  
(*Argema mimosae mimosae*)



**Sphingidae: Macroglossinae:  
Macroglossini: Macroglossina**

***Basiothia charis*** Walker, 1856  
Malolotja and Mlawula Checklists

***Basiothia medea*** (Fabricius, 1781)  
Malolotja and Mlawula Checklists



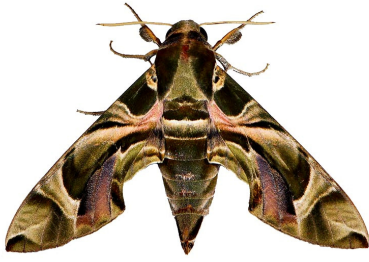
***Basiothia schenki*** (Möschler, 1872)  
Malolotja and Mlawula Checklists



***Cephonodes hylas virescens*** (Wallengren,  
1865)  
Malolotja and Mlawula Checklists



***Daphnis nerii*** (Linnaeus, 1758)  
Malolotja and Mlawula Checklists



***Euchloron megaera megaera*** (Linnaeus, 1758)  
Malolotja and Mlawula Checklists



***Hippotion celerio*** (Linnaeus, 1758)  
Malolotja and Mlawula Checklists

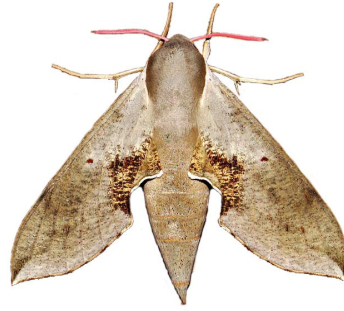


***Hippotion eson*** (Cramer, 1779)  
iNaturalist

***Hippotion osiris*** (Dalman, 1823)  
Malolotja and Mlawula Checklists



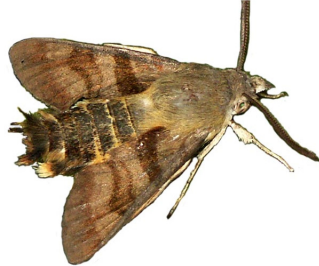
***Hippotion rosae*** (Butler, 1882)  
Metamorphosis Vol 27  
(*Hippotion rosae rosae*)



***Hyles livornicus*** (Esper, 1780)  
Malolotja and Mlawula Checklists  
(*Hyles livornica*, *Hyles lineata livornica*)



***Macroglossum trochilus*** (Hübner, 1823)  
Malolotja and Mlawula Checklists  
(*Macroglossum trochilus trochilus*)



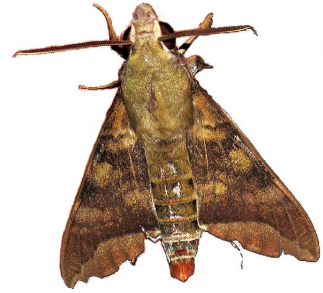
***Nephele accentifera*** (Palisot de Beauvois, 1805)  
Malolotja and Mlawula Checklists



***Nephele argentifera*** (Walker, 1856)  
Malolotja and Mlawula Checklists



***Nephele comma*** Hopffer, 1857  
Malolotja and Mlawula Checklists



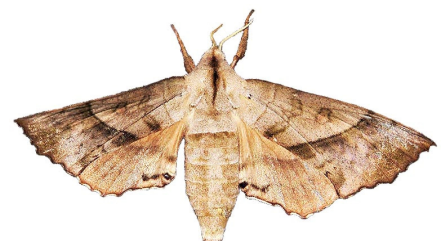
***Nephele peneus*** (Cramer, 1776)  
UCT-ADU LepiMap



***Odontosida pusilla*** (Felder, 1874)  
Malolotja and Mlawula Checklists  
(*Odontosida pusillus*)

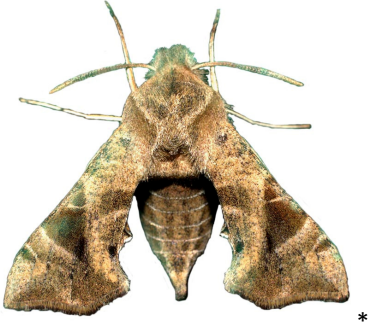


***Rufoclanis numosae*** (Wallengren, 1860)  
iNaturalist





***Sphingonaepiopsis nana*** (Walker, 1856)  
Malolotja and Mlawula Checklists



***Temnora elegans*** (Rothschild, 1895)  
Malolotja and Mlawula Checklists  
(*Temnora elegans elegans*)

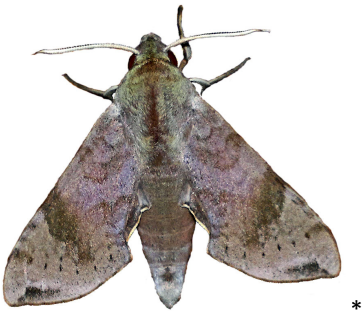
***Temnora fumosa fumosa*** (Walker, 1856)  
Malolotja and Mlawula Checklists  
(*Temnora fumosa fumosa*)



***Temnora marginata marginata*** (Walker, 1856)  
UCT-ADU LepiMap  
(*Temnora marginata marginata*)



***Temnora murina*** (Walker, 1856)  
Hermann Staude



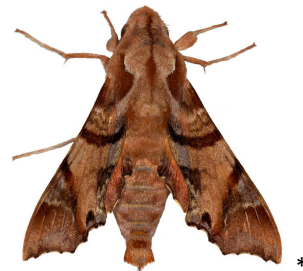
***Temnora plagiata*** Walker, 1856  
Malolotja and Mlawula Checklists  
(*Temnora plagiata plagiata*)



***Temnora pseudopylas pseudopylas***  
(Rothschild, 1894)  
Malolotja and Mlawula Checklists  
(*Temnora pseudopylas pseudopylas*)



***Temnora pylas*** (Cramer, 1779)  
Malolotja and Mlawula Checklists  
(*Temnora pylas pylas*)



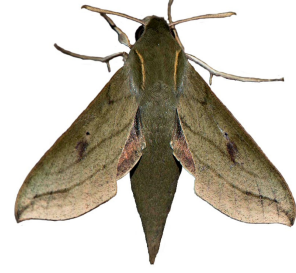
***Temnora zantus*** (Herrich-Schäffer, 1854)  
UCT-ADU LepiMap  
(*Temnora zantus zantus*)



**Sphingidae: Macroglossinae:  
Macroglossini: Choerocampina**

***Theretra cajus*** (Cramer, 1777)  
Malolotja and Mlawula Checklists

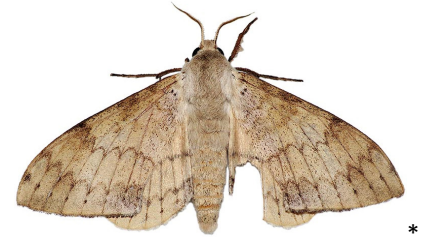
***Theretra capensis*** (Linnaeus, 1764)  
Malolotja and Mlawula Checklists



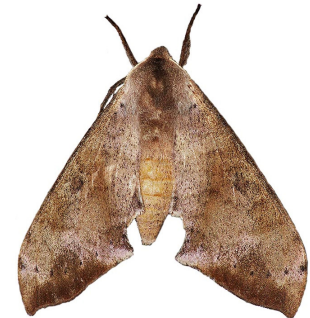
***Theretra monteironis***(Butler, 1882)  
iNaturalist

**Sphingidae: Smerinthinae: "Polyptychus  
Genus-Group"**

***Andriasa contraria*** Walker, 1856  
Hermann Staude



***Neopolyptychus compar*** (Rothschild &  
Jordan, 1903)  
Hermann Staude



***Polyptychus grayii*** (Walker, 1856)  
Project Noah (Photos by Tina Petterson)  
(*Polyptychoides grayii*)



*Pseudoclanis postica* (Walker, 1856)  
Malolotja and Mlawula Checklists



**Sphingidae: Smerinthinae: Ambulicini**

*Batocnema africana* (Distant, 1899)  
UCT-ADU LepiMap Swaziland Species List Nov 2016  
(*Batocnema africanus*)



**Sphingidae: Smerinthinae:  
Leucophebiini**

*Afroclanis calcarea* (Rothschild & Jordan, 1907)  
Project Noah (Photos by Tina Petterson)  
(*Afroclanis calcareus*)



**Sphingidae: Smerinthinae: Sichiini**

*Likoma apicalis* Rothschild & Jordan, 1903  
Hermann Staude



*Lophostethus dumolinii* (Angas, 1849)  
Project Noah (Photos by Tina Petterson)  
(*Lophostethus dumolinii dumolinii*)



**Sphingidae: Sphinginae: Sphingini:  
"Psilogramma Genus-Group"**

*Poliana natalensis* (Butler, 1875)  
UCT-ADU LepiMap  
(*Macropoliana natalensis*)



**Sphingidae: Sphinginae: Sphingini:  
Acherontiina**

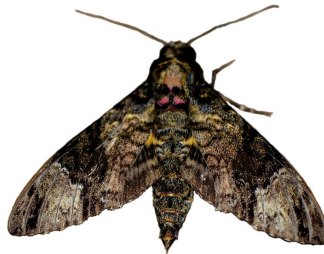
*Acherontia atropos* (Linnaeus, 1758)  
Malolotja and Mlawula Checklists



*Agrilus convolvuli* (Linnaeus, 1758)  
Malolotja and Mlawula Checklists



*Coelonia fulvinotata* (Butler, 1875)  
Malolotja and Mlawula Checklists  
(*Coelonia mauritii*)



*Platysphinx piabilis* (Distant, 1897)  
UCT-ADU LepiMAP



**Sphingidae: Sphinginae: Sphingini:  
Sphingina**

*Oligographa juniperi* (Boisduval, 1847)  
Afromoths: TMSA



*Xanthopan morgani* (Walker, 1856)  
iNaturalist





**Lasiocampoidea**

**Lasiocampidae: Lasiocampinae**

*Chilena* sp.

BOLD

**Lasiocampidae: Lasiocampinae:**

**Lasiocampini**

*Beralade perobliqua* Walker, 1855

UCT-ADU LepiMap



*Bombycopsis bipars* (Walker, 1855)

Malolotja and Mlawula Checklists; Afromoths: Janse (1964)

(*Bombycopsis indecora*)



*Bombycopsis funebris* Ioannou & Krüger, 2009

Afromoths: Krüger (2001b)

*Bombycopsis metallicus* (Distant, 1898)

UCT-ADU LepiMap



*Bombycopsis nigrovittata* Aurivillius, 1927

Afromoths: New record (T. Baron)



*Braura ligniclusa* (Walker, 1865)

Afromoths: TMSA

*Braura truncatum* (Walker, 1855)

Malolotja and Mlawula Checklists

(*Pachypasa truncata*)

Afromoths: TMSA

(*Braura ligniclusa*)



*Catalebeda cuneilinea* (Walker, 1856)

iNaturalist

*Eutricha morosa* (Walker, 1865)

Afromoths: TMSA

*Henometa clarki* (Aurivillius, 1909)

Project Noah



*Leipoxais peraffinis* Holland, 1893

Malolotja and Mlawula Checklists



*Metajana marshalli* (Aurivillius, 1909)

Malolotja and Mlawula Checklists, UCT-ADU

LepiMap

(*Craspia marshalli*)

*Odontocheilopteryx myxa* Wallengren, 1860

UCT-ADU LepiMap



*Odontocheilopteryx obscura* Aurivillius, 1927

UCT-ADU LepiMap



*Philotherma rosa rosa* (Druce, 1888)

Malolotja and Mlawula Checklists

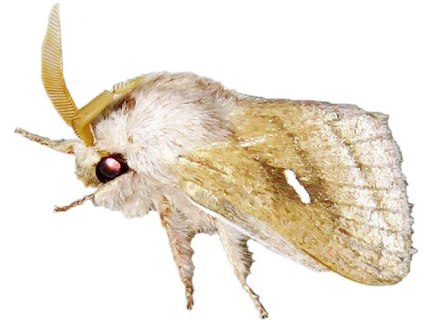
(*Philotherma rosa rosa*)



*Sena prompta prompta* (Walker, 1855)

Malolotja and Mlawula Checklists

(*Sena prompta*)



*Stoermeriana aculeata* (Walker, 1865)

Malolotja and Mlawula Checklists

(*Streblote aculeata*)



*Trichopisthia monteiroi* (Druce, 1887)

Project Noah (Photos by Tina Petterson)



**Lasiocampidae: Lasiocampinae: Malacosomatini**

***Bombycomorpha bifascia*** (Walker, 1855)

Malolotja and Mlawula Checklists; Afromoths: Yakovlev & Witt (2016); Joannou & Gurkovich (2009)  
(*Bombycomorpha bifascia bifascia*)



\*

***Bombycomorpha pallida*** Distant, 1897

Malolotja and Mlawula Checklists; Joannou & Gurkovich (2009)

***Pseudolyra distincta*** (Distant, 1899)

Hermann Staude



\*

***Sophyrta argibasis*** (Mabille, 1893)

Afromoths: TMSA