

Preliminary Eswatini Moths Checklist - PROVISIONAL –May 2023

Part 3: Noctuoidea

Illustrations are from photos of live moths. Those marked with an asterisk are not from Eswatini, and are for reference only.

Noctuoidea

Erebidae: Aganainae

Asota speciosa (Drury, 1773)
Malolotja and Mlawula Checklists;
Afro-moths: TMSA
(*Psephea speciosa*)

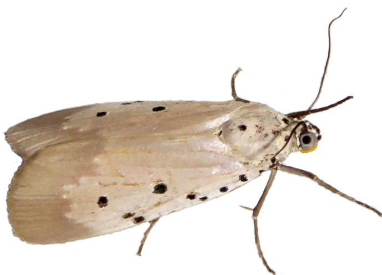


Digama meridionalis meridionalis Swinhoe,
1907
UCT-ADU LepiMap Swaziland Species List
Nov 2016



*

Digama ostentata Distant, 1899
UCT-ADU LepiMap



Sommeria culta Hübner, 1831
Malolotja and Mlawula Checklists



Sommeria strabonis (Hampson, 1910)
Malolotja and Mlawula Checklists
(*Digama strabonis*)



*

Erebidae: Anobinae

Anoba atriplaga (Walker, 1858)
UCT-ADU LepiMap; Afro-moths: TMSA



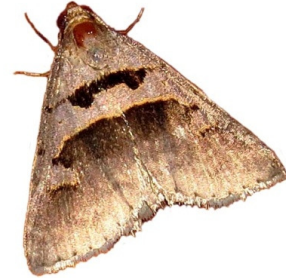
Anoba atripuncta (Hampson, 1902)
Afro-moths: TMSA



Anoba disjuncta (Walker, 1865)
UCT-ADU LepiMap



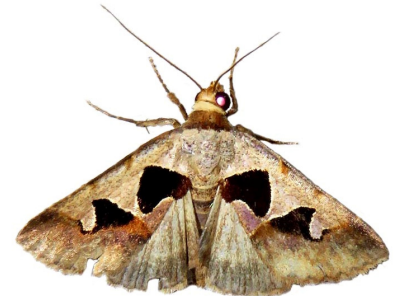
Anoba hamifera (Hampson, 1902)
UCT-ADU LepiMAP; Afro-moths: TMSA



Anoba microloba Hampson, 1926
Malolotja and Mlawula Checklists;
Afro-moths: TMSA



Anoba plumipes (Wallengren, 1860)
Afro-moths: TMSA



Anoba sinuata (Fabricius, 1775)
UCT-ADU LepiMap



Anoba sp.
UCT-ADU LepiMap

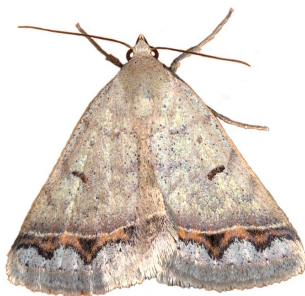


Baniana arvorum (Guenée, 1852)
UCT-ADU LepiMAP



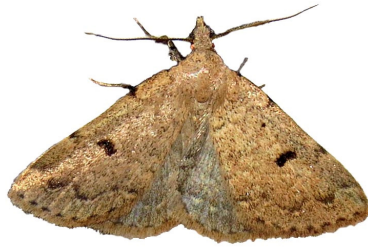
Marcipa mediana Hampson, 1926
Afromoths: TMSA

Plecoptera annexa (Distant, 1898)
Malolotja and Mlawula Checklists;
Afromoths: TMSA



*

Plecoptera arctinotata (Walker, 1865)
Afromoths: TMSA
UCT-ADU LepiMap



Plecoptera laniata Hampson, 1910
Afromoths: TMSA



Plecoptera melalepis Hampson, 1910
Afromoths: TMSA



Plecoptera melanoscia Hampson, 1926
UCT-ADU LepiMap



Plecoptera misera (Butler, 1883)
Afromoths: TMSA



Plecoptera poderis (Wallengren, 1863)
UCT-ADU LepiMAP



Plecoptera punctilineata Hampson, 1910
UCT-ADU LepiMAP



Plecoptera resistens (Walker, 1858)
UCT-ADU LepiMap



Plecoptera rufirena (Hampson, 1902)
UCT-ADU LepiMap

Plecoptera tripalis (Wallengren, 1863)
UCT-ADU LepiMap



Plecoptera sp.
UCT-ADU LepiMap



Pleuronodes arida (Hampson, 1902)
Afro-moths: TMSA; UCT-ADU LepiMap



Erebidae: Arctiinae: Arctiini

Acantharctia latifasciata Hampson, 1909
Malolotja and Mlawula Checklists



Afromurzinia lutescens (Walker, 1855)
Wikipedia



Afropilarctia dissimilis (Distant, 1897)
Malolotja and Mlawula Checklists
(*Estigmene dissimilis*)

Alytarchia amanda (Boisduval, 1847)
Malolotja and Mlawula Checklists



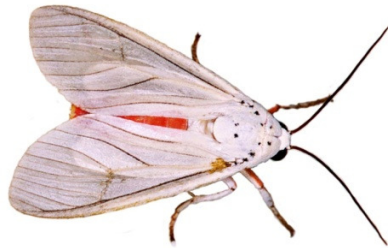
*

Amerila affinis (Rothschild, 1910)
Malolotja and Mlawula Checklists

Amerila bauri Möschler, 1884
Project Noah (Photos by Tina Petterson)



Amerila lupia (Druce, 1887)
Malolotja and Mlawula Checklists



*

Amerila makadara Häuser & Boppré, 1997
Afro-moths: Häuser & Boppré (1997)

Amerila mulleri Häuser & Boppré, 1997
Afro-moths: Häuser & Boppré (1997)

Amerila vitrea vitrea Plötz, 1880
Afro-moths: Häuser & Boppré (1997)

Amphicallia bellatrix (Dalman, 1823)
Malolotja and Mlawula Checklists



Chiromachla leuconoe leuconoe Hopffer, 1857
UCT-ADU LepiMap
(*Nyctemera leuconoe*)



Cretonotos punctivitta (Walker, 1855)
UCT-ADU LepiMap



Diotra rostrata (Wallengren, 1860)
Malolotja and Mlawula Checklists
(*Secusio pustularia*)



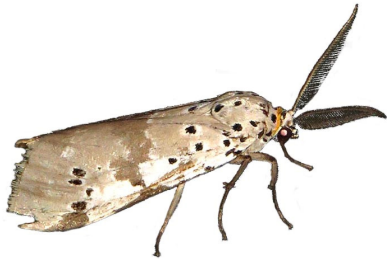
Estigmene multivittata Rothschild, 1910
Malolotja and Mlawula Checklists



Eyrallpenus testacea (Walker, 1855)
Malolotja and Mlawula Checklists



Galtara nepheloptera (Hampson, 1910)
UCT-ADU LepiMap



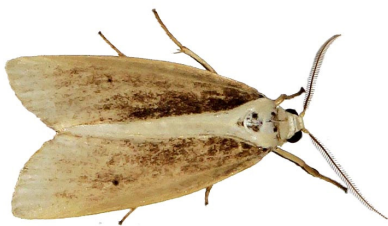
Galtara pulverata (Hampson, 1900)
Malolotja and Mlawula Checklists
(*Secusio pulverata*)



Ilemodes astriga Hampson, 1916
UCT-ADU LepiMap



Ilemodes heterogyna Hampson, 1900
UCT-ADU LepiMap



Logunovium scortillum scortillum
(Wallengren, 1875)
UCT-ADU LepiMap
(*Spilosoma scortillum*)



Paralacydes arborifera (Butler, 1875)
Malolotja and Mlawula Checklists



Popoudina leighi (Rothschild, 1910)
Afro-moths: TMSA
(*Spilosoma leighi*)



Popoudina linea (Walker, 1855)
UCT-ADU LepiMap
(*Spilosoma lineatum*)



Pseudlepista atrizona Hampson, 1910
UCT-ADU LepiMap



Pseudoradiarctia lentifasciata (Hampson, 1916)
UCT-ADU LepiMap



Pseudoradiarctia scita (Walker, 1865)
UCT-ADU LepiMAP



Radiarctia screabilis screabilis (Wallengren, 1875)
Malolotja and Mlawula Checklists
(*Spilosoma lutescens*)



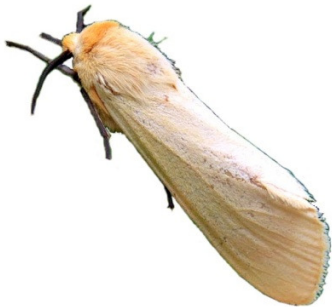
Rhodogastris amasis (Cramer, 1779)
Malolotja and Mlawula Checklists



Rhodogastria similis (Möschler, 1884)
UCT-ADU LepiMap



Saenura flava Wallengren, 1860
Malolotja and Mlawula Checklists



Secusio strigata strigata Walker, 1854
UCT-ADU LepiMap



Teracotona metaxantha (Hampson, 1909)
UCT-ADU LepiMap



Teracotona rhodophaea (Walker, 1865)
UCT-ADU LepiMap



Teracotona submacula (Walker, 1855)
UCT-ADU LepiMap



Utetheisa pulchella (Linnaeus, 1758)
Malolotja and Mlawula Checklists



Erebidae: Arctiinae: Eilemini

Aglossosia flavimarginata Hampson, 1900
Malolotja and Mlawula Checklists

Aglossosia flavithorax (Rothschild, 1912)
Malolotja and Mlawula Checklists
(*Onychipodia flavithorax*)

Birketsmithiola sanguicosta (Hampson, 1901)
UCT-ADU LepiMap
(*Eilema sanguicosta*)



Brunia vicaria (Walker, 1854)
Malolotja and Mlawula Checklists
(*Lithosia natara*, *Ovenna vicaria*)



Cragia distigmata (Hampson, 1901)
UCT-ADU LepiMap
(*Eilema distigmata*)



Enargeiosia elegans elegans (Butler, 1877)
UCT-ADU LepiMap
(*Eilema elegans elegans*)



Eucreagra arculifera Felder, 1874
Malolotja and Mlawula Checklists

Lepista pandula (Boisduval, 1847)
Malolotja and Mlawula Checklists

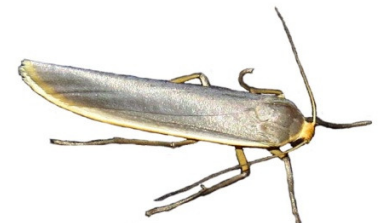


Leptilema leia (Hampson, 1901)
Malolotja and Mlawula Checklists
(*Eilema leia*)

Lomilema gracilipennis (Wallengren, 1860)
Malolotja and Mlawula Checklists
(*Eilema gracilipennis*)

Phryganopsis asperatella (Walker, 1864)
Malolotja and Mlawula Checklists

Sozusa scutellata (Wallengren, 1860)
Malolotja and Mlawula Checklists



Erebidae: Arctiinae: Incertae Sedis

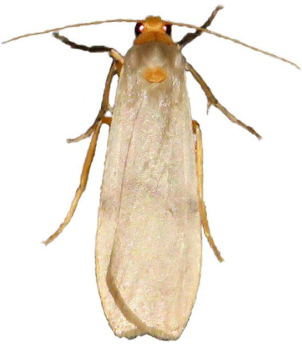
Exilisia bipuncta (Hampson, 1900)
Malolotja and Mlawula Checklists
(*Ochrota bipuncta*)

Erebidae: Arctiinae: Lithosiini

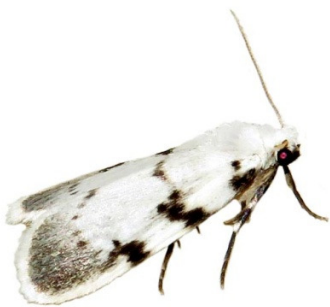
Afrasura rivulosa (Walker, 1864)
UCT-ADU LepiMAP



Campterothis asaphogramma
UCT-ADU LepiMAP



Cyana marshalli (Hampson, 1900)
UCT-ADU LepiMAP; Afromoths: TMSA



Cyana rejecta (Walker, 1854)
Malolotja and Mlawula Checklists
(*Cyana bipunctigera*, *Lexis bipunctigera*)



Cyana rhodostriata (Hampson, 1914)
UCT-ADU LepiMap



Cyana sp.
UCT-ADU LepiMap

Eurosia lineata Hampson, 1900
UCT-ADU LepiMAP



Hypagoptera rufeola Hampson, 1900
UCT-ADU LepiMap
(*Eilema goniophora*)



Pseudocragia quadrinotata (Walker, 1864)
Malolotja and Mlawula Checklists
(*Tigrioides quadrinotata*, *Setina quadrinotata*)

Siccia caffra Walker, 1854
Malolotja and Mlawula Checklists



Siccia melanospilata Hampson, 1911
UCT-ADU LepiMap



Siccia punctipennis (Wallengren, 1860)
UCT-ADU LepiMap



Tumicla sagenaria (Wallengren, 1860)
UCT-ADU LepiMap
(*Asura sagenaria*)



Erebidae: Arctiinae: Syntomini

Amata kilimandjaronis (Strand, 1917)
iNaturalist

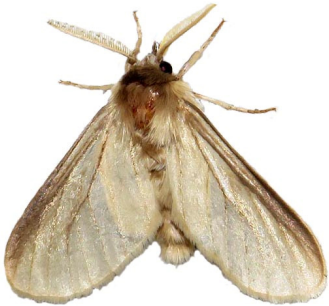
Amata kuhlweinii (Lefévre, 1832)
Malotja and Mlawula Checklists
(*Syntomis kuhlweini*)



Amata simplex (Walker, 1854)
iNaturalist

Amata sp.
iNaturalist

Apisa canescens Walker, 1855
Malotja and Mlawula Checklists



Apisa grisescens (Dufrene, 1945)
Hermann Staude

Automolis meteus (Cramer, 1781)
Malotja and Mlawula Checklists



*

Cacosoma gnatula (Boisduval, 1847)
Malotja and Mlawula Checklists

Ceryx fulvescens (Walker, 1854)
iNaturalist



Ceryx pterophorina (Mabille, 1892)
iNaturalist



Metarctia lateritia (Herrich-Schäffer, 1855)
Malotja and Mlawula Checklists;
Afro-moths: TMSA
UCT-ADU LepiMap
(*Automolis lateritia*)



Metarctia rufescens Walker, 1855
Malotja and Mlawula Checklists
(*Automolis rufescens*)

Metarctia sp.
UCT-ADU LepiMap



Pseudonacليا bifasciata Aurivillius, 1910
iNaturalist



Pseudonacليا puella (Boisduval, 1847)
Malotja and Mlawula Checklists
(*Pseudonacليا puella*)



Thyretes caffra Wallengren, 1863
UCT-ADU LepiMap



Trichaeta pterophorina (Mabille, 1892)
UCT-ADU LepiMAP



Erebidae: Arctiinae: Tinoliinae

Campteroopsis asaphogramma Krüger, 2016
Afro-moths: TMSA

Galactilema lactipenne Krüger, 2015
Afro-moths: TMSA

Gracilema proleuca (Hampson, 1914)
Afro-moths: TMSA

Lyseia bigutta Walker, 1854
Afro-moths: TMSA

Lyseia bistagma Krüger, 2017
Krüger, 2017

Lysceia flava Kruger, 2017
UCT-ADU LepiMAP



***Lysceia* sp.**
[see Kruger 2017]
UCT-ADU LepiMAP



Oedipygilema aposema (Kühne, 2010)
Afromoths: TMSA

Oreadilema othreis Krüger, 2015
Afromoths: TMSA

Erebidae: Boletobiinae

Erebidae: Boletobiinae: Araeopteronini

Araeopteron legraini Bippus, 2018
UCT-ADU LepiMap



Erebidae: Boletobiinae: Eublemmiini

Cautatha drepanodes (Hampson, 1910)
UCT-ADU LepiMap



Cerynea thermesialis (Walker, 1866)
Malotja and Mlawula Checklists
(*Busmadis thermesialis*)



Corgatha albigrisea (Warren, 1914)
UCT-ADU LepiMap
(*Enispa albigrisea*)



Corgatha chionocraspis Hampson, 1918
UCT-ADU LepiMap ; Hermann Staude



Corgatha latifera (Walker, 1869)
UCT-ADU LepiMAP
(*Oruza latifera*)



Corgatha producta Hampson, 1902
Malotja and Mlawula Checklists



Eublemma admota (Felder R. &
Rogenhofer, 1875)
Malotja and Mlawula Checklists
(*Autoba admota*)



Eublemma apicata Distant, 1898
Malotja and Mlawula Checklists



Eublemma baccatrix Hacker, 2019
Malolotja and Mlawula Checklists
(*Eublemma baccalix*)



Eublemma chionophlebia Hampson, 1910
UCT-ADU LepiMap



Eublemma flaviceps Hampson, 1902
UCT-ADU LepiMap Swaziland Species List
Nov 2016



Eublemma bolinia (Hampson, 1902)
Malolotja and Mlawula Checklists;
UCT-ADU LepiMAP



Eublemma cochylioides (Guenée, 1852)
UCT-ADU LepiMap
(*Eublemma acarodes*)



Eublemma flavicosta Hampson, 1910
Malolotja and Mlawula Checklists;
UCT-ADU LepiMap



Eublemma brachygonia Hampson, 1910
Malolotja and Mlawula Checklists
(*Autoba brachygonia*)

Eublemma caffrorum (Wallengren, 1860)
(It is not possible to distinguish *E. caffrorum* from *E. accedens* using only photos)
Malolotja and Mlawula Checklists;
UCT-ADU LepiMAP
(*Eublemma anachoresis*, *Eublemma sperans*)



Eublemma flavida Hampson, 1902
Hermann Staude



Eublemma costimacula (Saalmüller, 1880)
Malolotja and Mlawula Checklists
(*Autoba costimacula*)



Eublemma ceresensis Hacker, 2019
UCT-ADU LepiMAP



Eublemma ecthaemata Hampson, 1896
UCT-ADU LepiMap
(*Eublemma ecthymata*)



Eublemma foedosa (Guenée, 1852)
Malolotja and Mlawula Checklists



Eublemma gayneri (Rothschild, 1901)
UCT-ADU LepiMAP

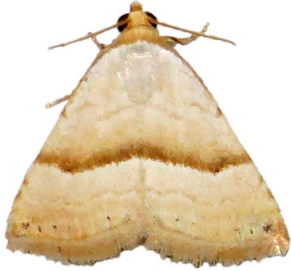


Eublemma leucanitis Hampson, 1910
Hermann Staude



*

Eublemma mesophaea Hampson, 1910
Malotja and Mlawula Checklists;
UCT-ADU LepiMap



Eublemma nigrivitta Hampson, 1902
Hermann Staude



*

Eublemma odontophora Hampson, 1910
Hermann Staude

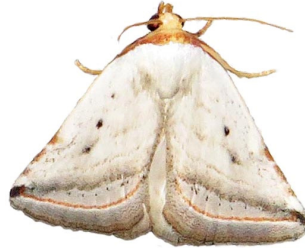
Eublemma ornatula (Felder & Rogenhofer,
1874)
Malotja and Mlawula Checklists



Eublemma parva (Hübner, 1808)
UCT-ADU LepiMAP



Eublemma penicillata Hampson, 1902
UCT-ADU LepiMAP



Eublemma pennula (Felder & Rogenhofer,
1875)
UCT-ADU LepiMAP
(*Eublemma minima*)



Eublemma seminivea Hampson, 1896
UCT-ADU LepiMAP

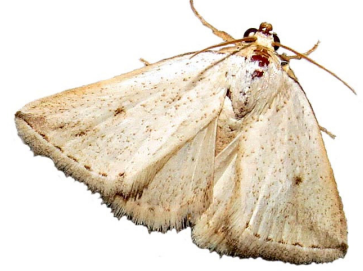


Eublemma stictilinea Hampson, 1910
Hermann Staude

Eublemma therma Hampson, 1910
UCT-ADU LepiMAP



Eublemma uninotata [author]
UCT-ADU LepiMAP



Eublemma viettei (Berio, 1954)
UCT-ADU LepiMAP



Eublemmistis chlorozonea Hampson, 1902
Hermann Staude

Honeyania ragusana (Freyer, 1844)
Malotja and Mlawula Checklists
(*Eublemma ragusana*)



Hypobleta viettei Berio, 1954
Malotja and Mlawula Checklists
(*Metasada viettei*)

Metachrostis decora (Walker, 1869)
Malotja and Mlawula Checklists,
UCT-ADU LepiMap
(*Eublemma decora*)



Metachrostis misturata (Hampson, 1910)
UCT-ADU LepiMAP



Metachrostis perplexa (Saalmüller, 1891)
Malolotja and Mlawula Checklists
(*Ozarba perplexa*)

Metachrostis postrufa (Hampson, 1914)
UCT-ADU LepiMAP



Metachrostis rubripuncta (Hampson, 1902)
Malolotja and Mlawula Checklists;
UCT-ADU LepiMAP
(*Eublemma rubripuncta*)



Metachrostis snelleni (Wallengren, 1875)
Malolotja and Mlawula Checklists
(*Zalaca snelleni*)



***Metachrostis* sp.**
UCT-ADU LepiMAP



Oediblemma trogoptera Hampson, 1918
UCT-ADU LepiMap
(*Trogocraspis* sp. 1)



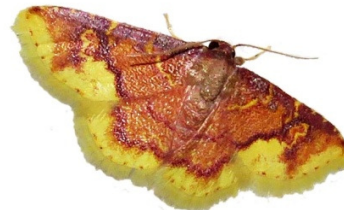
Paroruza subductata (Walker, 1861)
Malolotja and Mlawula Checklists

Pseudomicrodes mediorufa Hampson, 1910
Malolotja and Mlawula Checklists

Syngatha argyropasta (Hampson, 1918)
UCT-ADU LepiMap



Syngatha latiflavaría (Swinhoe, 1904)
UCT-ADU LepiMap
(*Chrysozonata latiflavaría*, *Chrysozonata purpurascens*)



Syngatha phoenicoxantha (Hampson, 1914)
Malolotja and Mlawula Checklists
(*Lophocytarra phoenicoxantha*)

Tegiapa goateri Hacker 2019
UCT-ADU LepiMAP



Tegiapa larentiodes (Prout A. E., 1922)
Malolotja and Mlawula Checklists
UCT-ADU LepiMap



***Tegiapa* sp.**
UCT-ADU LepiMAP



Erebidae: Boletobiinae: Phytometrini

Phytometra duplicalis (Walker, 1866)
Afromoths: TMSA



Phytometra fragilis (Butler, 1875)
Afromoths: TMSA
(*Antarchaea fragilis*)



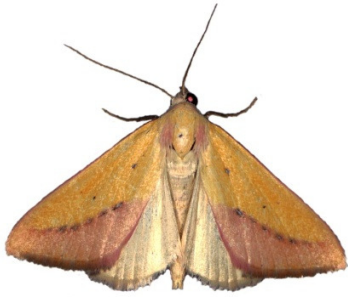
Phytometra helirusalis (Walker, 1859)
Afromoths: TMSA



Phytometra opsiphora (Hampson, 1926)
Malolotja and Mlawula Checklists;
Afromoths: TMSA



Phytometra sacraria (Felder & Rogenhofer, 1874)
Malolotja and Mlawula Checklists;
Afromoths: TMSA



Phytometra silona (Schaus, 1893)
Malolotja and Mlawula Checklists

Phytometra subflavalis africana (Walker, 1866)
Malolotja and Mlawula Nature Reserve
Checklists, Afromoths: TMSA
(*Antarchaea subflavalis*)



Radara prunescens (Hampson, 1902)
Afromoths: TMSA



Radara subcupralis (Walker, 1866)
Malolotja and Mlawula Checklists;
Afromoths: TMSA



Radara vacillans Walker, 1862
UCT-ADU LepiMAP



Raparnodes tritonias Hampson, 1902
Afromoths: TMSA
(*Raparna tritonias*)



Rhesala moestalis (Walker, 1866)
UCT-ADU LepiMAP



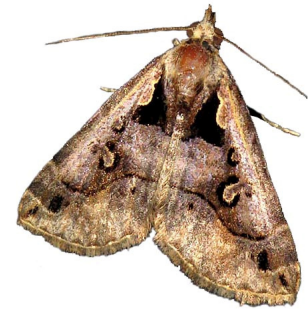
Rhesala natalensis Hampson, 1926
Malolotja and Mlawula Checklists
(*Rhesalides natalensis*)

Erebidae: Calpinae

Antiophebia bracteata Felder R., 1874
UCT-ADU LepiMAP



Arsina vausema (Hampson, 1926)
UCT-ADU LepiMAP



Disticta atava (Felder R. & Rogenhofer, 1875)
Malolotja and Mlawula Checklists;
Afromoths: TMSA



Egnasia vicaria vicaria (Walker, 1866)
UCT-ADU LepiMap



Gnamptogyia diagonalis Hampson, 1910
Afromoths: Krüger (2015)



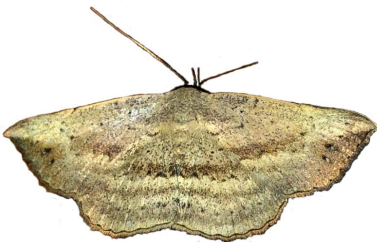
Hondryches phalaeniformis (Guenée, 1852)
UCT-ADU LepiMap



Maxera brachypecten Hampson, 1926
Afromoths: TMSA

Maxera digoniata (Hampson, 1902)
Malotja and Mlawula Checklists;
Afromoths: TMSA

Maxera marchalii (Boisduval, 1833)
Malotja and Mlawula Checklists
(*Maxera nigriceps*)



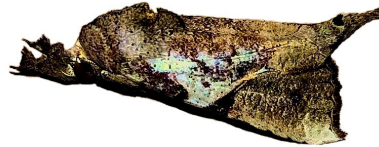
Maxera zygia (Wallengren, 1863)
Afromoths: Kiriakoff (1955)

Maxera sp. 2
UCT-ADU LepiMap

Maxera sp. 3
UCT-ADU LepiMap



Meliaba pelopsalis Walker, 1859
Afromoths: TMSA



Miniodes discolor Guenée, 1852
UCT-ADU LepiMap



Nagia gravipes Walker, 1858
Afromoths: Kühne (2010)

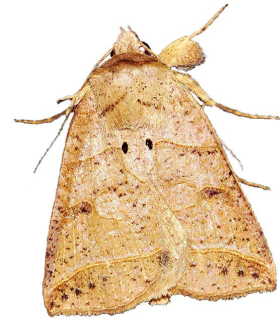
Nagia linteola (Guenée, 1852)
UCT-ADU LepiMap



Pantylia anderson (Felder R. &
Rogenhofer, 1875)
Afromoths: TMSA



Pantylia scissa (Walker, 1865)
Malotja and Mlawula Checklists;
UCT-ADU LepiMAP



Parafodina pentagonalis (Butler, 1894)
Afromoths: TMSA

Pristanepa platti Hampson, 1926
Afromoths: TMSA

Rhanidophora cinctigutta (Walker, 1862)
Malotja and Mlawula Checklists;
Afromoths: TMSA



Rhanidophora phedonia (Cramer, 1781)
Malotja and Mlawula Checklists;
Afromoths: TMSA



Rhanidophora ridens Hampson, 1902
UCT-ADU LepiMap; Afromoths: TMSA



Serrodus partita (Fabricius, 1775)
Malolotja and Mlawula Checklists;
Afromoths: TMSA



Taviodes subjecta (Walker, 1865)
Malolotja and Mlawula Checklists;
Afromoths: TMSA

Tephrialia vausema Hampson, 1926
Afromoths: TMSA

Erebidae: Calpinae: Calpini

Oraesia emarginata (Fabricius, 1794)
UCT-ADU LepiMap



Oraesia provocans Walker, 1858
Malolotja and Mlawula Checklists;
Afromoths: Krüger (2015)



Oraesia triobliqua (Saalmüller, 1880)
Afromoths: TMSA



Plusiodonta commoda Walker, 1865
Afromoths: TMSA

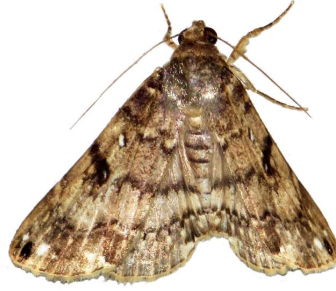
Plusiodonta natalensis Walker, 1865
Malolotja and Mlawula Checklists



Plusiodonta wahlbergi (Felder &
Rogenhofer, 1874)
Afromoths: TMSA

Erebidae: Calpinae: Ophiderini

Bareia incidens Walker, 1858
Afromoths: TMSA



Eudocima lequeuxi Brou & Zilli, 2016
UCT-ADU LepiMAP



Eudocima materna (Linnaeus, 1767)
Malolotja and Mlawula Checklists;
Afromoths: TMSA
(*Elygea materna*)



Eudocima phalonia (Linnaeus, 1763)
Afromoths: Prinsloo & Uys (2015)
(*Othreis fullonia*)



***Eudocima* sp.**
Project Noah (Photos by Pamela Sai)

Erebidae: Erebiniae

Anomis auragoides (Guenée, 1852)
Malolotja and Mlawula Checklists;
UCT-ADU LepiMap



Anomis flava (Fabricius, 1775)
Malolotja and Mlawula Checklists;
Afromoths: TMSA



Anomis leona (Schaus, 1893)
Malolotja and Mlawula Checklists
(*Gonitis leona*)



Anomis luperca Möschler, 1884
Afromoths: TMSA



Anomis sabulifera (Guenée, 1852)
Malolotja and Mlawula Checklists;
Afro-moths: TMSA
(*Cosmophila sabulifera*, *Anomis sabulifera*)



Anomis sp.
UCT-ADU LepiMap



Calesia xanthognatha Hampson, 1926
Malolotja and Mlawula Checklists



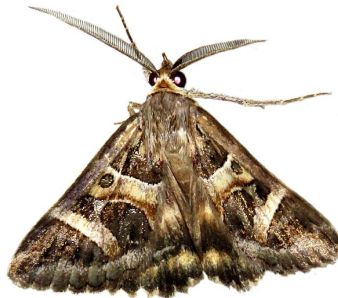
Calesia zambesita Walker, 1865
Afro-moths: Krüger (2016)



Calliodes pretiosissima Holland, 1892
iNaturalist



Cerocala vermiculosa (Herrich-Schäffer, 1858)
UCT-ADU LepiMap



Coryta canescens Walker, 1858
UCT-ADU LepiMap Swaziland Species List
Nov 2016



Ctenusa pallida (Hampson, 1902)
Malolotja and Mlawula Checklists
(*Acantholipes rufirena*)

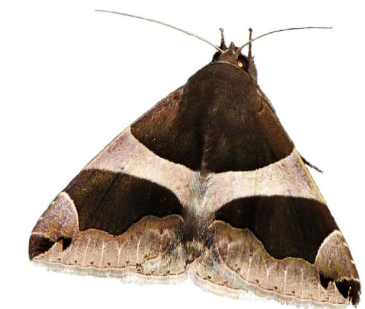
Dysgonia angularis (Boisduval, 1833)
Malolotja and Mlawula Checklists;
UCT-ADU LepiMAP
(*Caranilla angularis*)



Dysgonia derogans (Walker, 1858)
Malolotja and Mlawula Checklists;
UCT-ADU LepiMAP
(*Bastilla derogans*)



Dysgonia torrida (Guenée, 1852)
Malolotja and Mlawula Checklists



Egybolis vaillantina (Stoll, 1790)
UCT-ADU LepiMAP
(*Egybolis vaillantina vaillantina*)



Entomogramma pardus Guenée, 1852
Malolotja and Mlawula Checklists;
Afro-moths: TMSA



Grammodes bifasciata (Petagna, 1787)
Malolotja and Mlawula Checklists;
Afromoths: TMSA



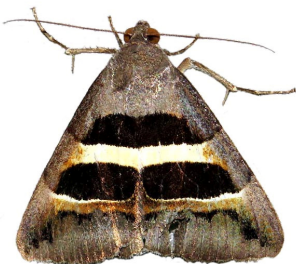
Grammodes congenita Walker, 1858
Malolotja and Mlawula Checklists



Grammodes eudidioides Guenée, 1852
Malolotja and Mlawula Checklists;
Afromoths: TMSA



Grammodes exclusiva Pagenstecher, 1907
Malolotja and Mlawula Checklists;
Afromoths: TMSA
(*Prodotis exclusiva*)



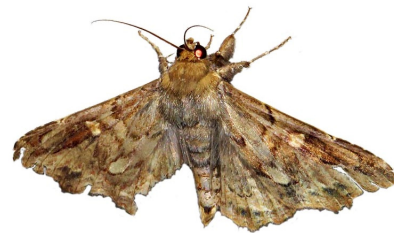
Grammodes stolida (Fabricius, 1775)
Malolotja and Mlawula Checklists;
Afromoths: TMSA
(*Prodotis stolida*)



Grammodes sp.
UCT-ADU LepiMap



Lacera alope (Cramer, 1780)
Malolotja and Mlawula Checklists



Lyncestis amphix (Cramer, 1777)
Malolotja and Mlawula Checklists;
Afromoths: Krüger (2015)

Lyncestis knudlarseni Hacker & Fibiger, 2006
Afromoths: TMSA

Plecopterodes moderata (Wallengren, 1860)
Malolotja and Mlawula Checklists;
Afromoths: TMSA



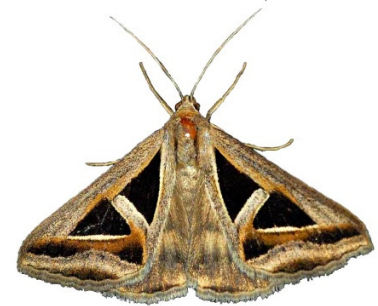
Stenopsis subdiversa (Prout L. B., 1919)
Malolotja and Mlawula Checklists
(*Stenopsis subdivisa*)

Tolna ambigua (Hampson, 1902)
Afromoths: TMSA

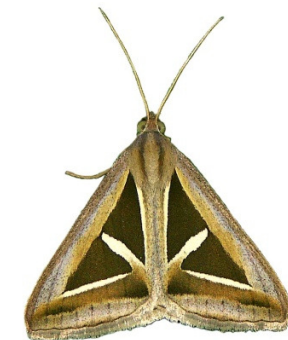
Tolna sypnoides (Butler, 1878)
UCT-ADU LepiMap



Trigonodes exportata Guenée, 1852
UCT-ADU LepiMAP



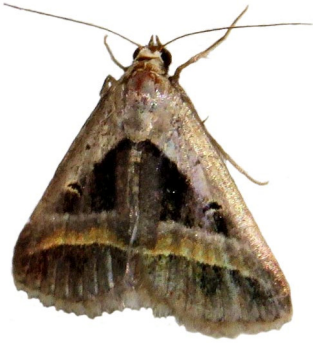
Trigonodes hyppasia (Cramer, 1779)
Malolotja and Mlawula Checklists;
Afromoths: TMSA



Tytroca phaeocyma Hampson, 1913
Afromoths: TMSA
(*Tytroca phaeocyma*)

Erebidae: Erebinæ: Acantholipini

Acantholipes circumdata (Walker, 1858)
Afromoths: TMSA



Acantholipes trimeni Felder & Rogenhofer, 1874
Malolotja and Mlawula Checklists;
Afromoths: TMSA



Ugia amaponda (Felder & Rogenhofer, 1874)
Malolotja and Mlawula Checklists;
Afromoths: TMSA

Erebidae: Erebinæ: Audeini

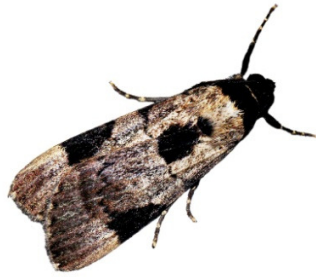
Audea bipunctata Walker, 1858
Afromoths: Kühne (2005)

Audea melanoplaga Hampson, 1902
UCT-ADU LepiMap



Audea nigrrior Kühne, 2005
Afromoths: Kühne (2005)

Audea tegulata Hampson, 1902
Malolotja and Mlawula Checklists
(*Davea humeralis*)



*

Audea zimmeri Berio, 1954
Afromoths: TMSA

Erebidae: Erebinæ: Catocalini

Aburina poliophaea Hampson, 1926
Afromoths: TMSA

Aedia pallididisca (Hampson, 1926)
Afromoths: TMSA

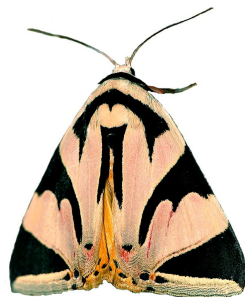
Aedia virescens (Hampson, 1902)
Afromoths: TMSA

Archaeopilicornus lucidus (Pinhey, 1968)
Afromoths: TMSA

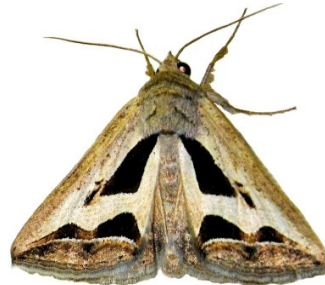
Attatha attathoides (Karsch, 1896)
iNaturalist



Attatha barlowi Prout A. E., 1921
iNaturalist



Cuneisigna obstans (Walker, 1858)
Afromoths: Karisch (2013)

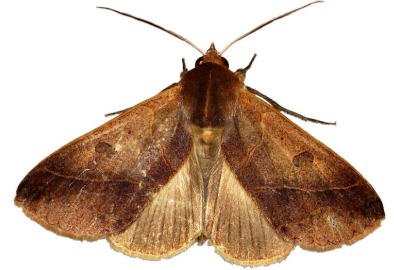


*

Ecpatia discophora Hampson, 1926
Afromoths: TMSA
(*Catephia discophora*)

Ercheia subsignata (Walker, 1865)
Afromoths: TMSA

Hypanua xyliana (Distant, 1898)
Afromoths: TMSA



Hypotacha retracta retracta (Hampson, 1902)
Afromoths: TMSA

Lophotavia globulipes (Walker, 1865)
Afromoths: TMSA



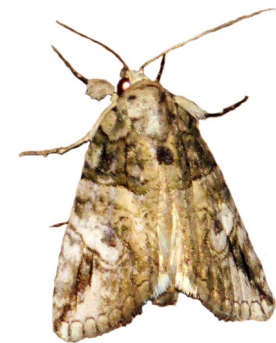
*

Macaldenia palumbiodes (Hampson, 1902)
Afromoths: TMSA
(*Parallelura palumbiodes*)

Parachalciope mahura (Felder R. & Rogenhofer, 1875)
Afromoths: TMSA, UCT-ADU LepiMAP



Prionfrontia strigata Hampson, 1926
Afromoths: TMSA



Tyroca leucoptera (Hampson, 1896)
Afromoths: TMSA



Tyroca metaxantha (Hampson, 1902)
Afromoths: TMSA

Ulotrichopus catocala (Felder &
Rogenhofer, 1874)
Afromoths: Kühne (2005)



Ulotrichopus primulinus (Hampson, 1902)
Malolotja and Mlawula Checklists;
Afromoths: Janse (1960)
(*Audea primulina*)

Ulotrichopus stertzi (Püngeler, 1907)
Malolotja and Mlawula Checklists
(*Aspidofrontia glaucescens*)

Ulotrichopus tinctipennis (Hampson, 1902)
Malolotja and Mlawula Checklists;
Afromoths: Agassiz & Bidzilya (2016)



Erebidae: Erebinæ: Erebinæ

Cylogramma fluctuosa
UCT-ADU LepiMap
UCT-ADU LepiMap



Cylogramma latona (Cramer, 1775)
Malolotja and Mlawula Checklists



Erebus walkeri (Butler, 1875)
UCT-ADU LepiMap

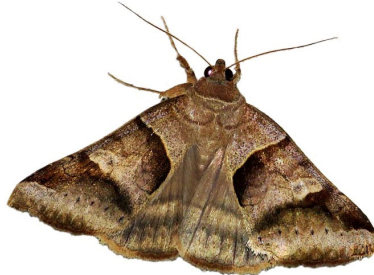


Erebidae: Erebinæ: Euclidiini

Mocis conveniens (Walker, 1858)
Malolotja and Mlawula Checklists;
Afromoths: TMSA
(*Remigia conveniens*)



Mocis mayeri (Boisduval, 1833)
Malolotja and Mlawula Checklists;
Afromoths: New record (T. Baron)



Mocis mutuaria (Walker, 1858)
UCT-ADU LepiMap



Mocis provera Zilli, 2000
Malolotja and Mlawula Checklists
(*Mocis frugalis*)



Erebidae: Erebinæ: Hulodini

Ericia congregata (Walker, 1858)
Afromoths: TMSA

Ericia congressa (Walker, 1858)
Afromoths: TMSA



Ericia inangulata (Guenée, 1852)
Malolotja and Mlawula Checklists



Ericeia sobria Walker, 1858
Afroths: TMSA, UCT-ADU LepiMap



Ericeia sp.
UCT-ADU LepiMap

Erebidae: Erebinæ: Hypopyrini

Cometaster pyrula (Hopffer, 1857)
UCT-ADU LepiMAP; Afroths: Pinhey (1975)



Hypopyra africana (Kirby, 1896)
Afroths: TMSA



Hypopyra capensis Herrich-Schäffer, 1854
Malotja and Mlawula Checklists;
Afroths: TMSA



Erebidae: Erebinæ: Ophiusini

Ophiusa dianaris (Guenée, 1852)
Malotja and Mlawula Checklists



Ophiusa finifascia (Walker, 1858)
Malotja and Mlawula Checklists;
Afroths: TMSA
(*Anua finifascia*)

Ophiusa mejanesi (Guenée, 1852)
Malotja and Mlawula Checklists;
Afroths: TMSA
(*Ophiusa wahlbergi*)



Ophiusa selenaris (Guenée, 1852)
Malotja and Mlawula Checklists;
Afroths: TMSA
(*Anua selanaris*)



Ophiusa tirhaca (Cramer, 1777)
Malotja and Mlawula Checklists
(*Ophiusa tirhaca obscura*)



Ophiusa violascens Hampson, 1902
Malotja and Mlawula Checklists

Ophiusa sp.
UCT-ADU LepiMAP



Thyas arcifera (Hampson, 1913)
UCT-ADU LepiMap



Thyas rubricata (Holland, 1894)
Malotja and Mlawula Checklists;
Afroths: TMSA
(*Dermaleipa rubricata*)



Erebidae: Erebinæ: Pandesmini

Heteropalpia cortytoides (Berio, 1939)
Malotja and Mlawula Checklists



Pandesma muricolor Berio, 1966
Afromoths: TMSA



Pandesma quenavadi Guenée, 1852
UCT-ADU LepiMap



Pandesma robusta (Walker, 1858)
Malolotja and Mlawula Checklists
(*Thria robusta*)



Polydesma umbricola Boisduval, 1833
Malolotja and Mlawula Checklists;
Afromoths: TMSA
(*Trichopolydesma colutrix*)



Sphingomorpha chlorea (Cramer, 1777)
Malolotja and Mlawula Checklists



Erebidae: Erebinæ: Pericymini

Pericyma atrifusa (Hampson, 1902)
Malolotja and Mlawula Checklists;
Afromoths: TMSA



Pericyma mendax (Walker, 1858)
UCT-ADU LepiMap; Afromoths: TMSA



Erebidae: Erebinæ: Poaphilini

Achaea boris (Geyer, 1837)
Malolotja and Mlawula Checklists;
Afromoths: TMSA
(*Achaea sordida*)



Achaea catella Guenée, 1852
Malolotja and Mlawula Checklists;
Afromoths: TMSA



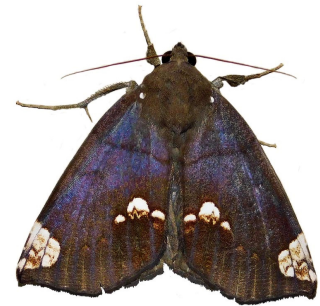
Achaea determinata Prout A. E., 1921
UCT-ADU LepiMAP



Achaea echo (Walker, 1858)
Malolotja and Mlawula Checklists;
Afromoths: TMSA



Achaea illustrata Walker, 1858
Afromoths: TMSA



Achaea indeterminata (Walker, 1865)
Malolotja and Mlawula Checklists;
Afromoths: TMSA



Achaea klugii (Boisduval, 1833)
Malolotja and Mlawula Checklists
Afromoths: TMSA



Achaea lienardi (Boisduval, 1833)
Malolotja and Mlawula Checklists;
Afromoths: TMSA



Achaea praestans Guenée, 1852
Malolotja and Mlawula Checklists;
Afromoths: TMSA



Achaea trapezoides (Guenée, 1862)
Afromoths: TMSA



Achaea violaceofascia (Saalmüller, 1891)
Afromoths: TMSA
(*Achaea mercatoria*)

Achaea violascens Hampson, 1918
Malolotja and Mlawula Checklists

Chalciope delta (Boisduval, 1833)
Malolotja and Mlawula Checklists;
Afromoths: TMSA



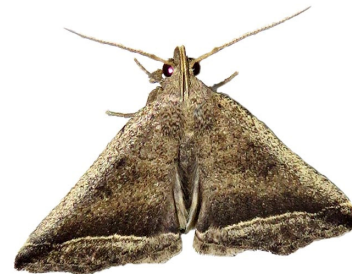
Erebidae: Eulepidotinae

Anticarsia rubricans (Boisduval, 1833)
Afromoths: Kühne (2005)
(*Anticarsia irrorata*)



Erebidae: Herminiinae

Bertula pulvida Hacker, Fiebig & Stadie,
2021
UCT-ADU LepiMAP



Hipoepa fractalis (Guenée, 1854)
Malolotja and Mlawula Checklists

Hydrillodes uliginosalis Guenée, 1854
Malolotja and Mlawula Checklists
(*Olybama uliginosalis*, *Dichromia deobisalis*)



Naarda flavisignata Vári, 1962
UCT-ADU LepiMAP



Naarda leucopis Hampson, 1902
Malolotja and Mlawula Checklists
(*Gynaephila leucopis*)

Naarda nigripalpis Hampson, 1916
UCT-ADU LepiMAP



***Naarda* sp.**
UCT-ADU LepiMAP



Nodaria melaleuca Hampson, 1902
UCT-ADU LepiMap



Nodaria nodosalis ((Herrich-Schäffer,
1851))
UCT-ADU LepiMap



Simplicia extinctalis (Zeller, 1952)
UCT-ADU LepiMAP

Erebidae: Hypeninae

Dichromia erastrialis (Walker, 1866)
Malolotja and Mlawula Checklists
(*Hypaena erastrialis*)

Naarda leucopis Hampson, 1902
Malolotja and Mlawula Checklists
(*Gynaephila leucopis*)

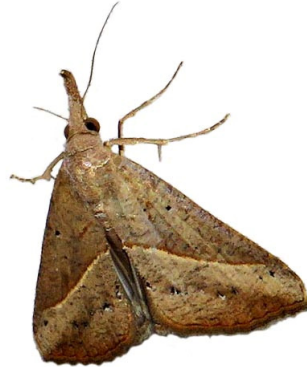
Dichromia semlikiensis (Prout E. A., 1921)
UCT-ADU LepiMap
(*Hypaena semlikiensis*)



Hypena laetalimaiorLödl, 1995
UCT-ADU LepiMAP



Hypena laetalisWalker, 1859
UCT-ADU LepiMAP

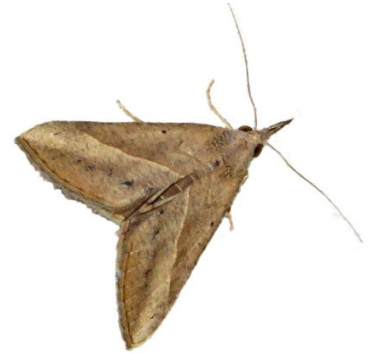


Hypena senialis Guenée, 1854
Malolotja and Mlawula Checklists
(*Hypaena potamistris*)



Hypena simplicialisWalker, 1859
UCT-ADU LepiMap
(*Hypena obacerralis*)

H.simplicialis is a brown-grey species with narrow, acute wings and straight post median fascia, which runs parallel to termen.



Hypena commixtalisZeller, 1852
(*Hypena laceratalis*)
UCT-ADU LepiMAP



Hypena lividalis (Hübner, 1790)
UCT-ADU LepiMAP



Hypena strigatus (Fabricius, 1798)
UCT-ADU LepiMAP



Hypena fumidalis Zeller, 1852
Malolotja and Mlawula Checklists
(*Hypena abyssinialis*, *Hypaena abyssinialis*)



Hypena puncticostaProut A. E., 1925
UCT-ADU LepiMap



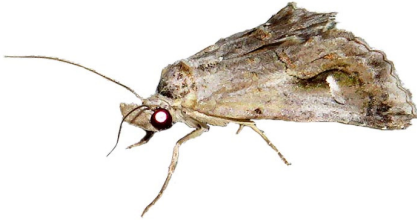
Hypena fuscalisSaalmüller, 1891
Malolotja and Mlawula Checklists
(*Hypena abyssinialis*, *Hypaena fuscalis*)



***Hypena* sp.**
UCT-ADU LepiMAP



Proluta staudei (Hacker, 2013)
UCT-ADU LepiMAP



Rhynchina obliqualis (Kollar, 1844)
Malolotja and Mlawula Checklists
(*Hypaena obliqualis*, *Hypaena masuralis*)

Sarmatia interitalis Guenée, 1854
UCT-ADU LepiMAP



Tetracme truncataria (Walker, 1861)
Malolotja and Mlawula Checklists

Zekelita antistropha (Vári, 1962)
UCT-ADU LepiMAP
(*Rhynchina antistropha*)



Zekelita coniodes (Vári, 1962)
UCT-ADU LepiMAP
(*Rhynchina coniodes*)



Zekelita poecilopa (Vári, 1962)
iNaturalist



Zekelita tinctalis (Zeller, 1852)
UCT-ADU LepiMAP
(*Hypena tinctalis*, *Rhynchina tinctalis*)



Erebidae: Hypenodinae

Micronola notonana Hacker, Fiebig &
Stadie, 2021
iNaturalist



Erebidae: Hypocalinae

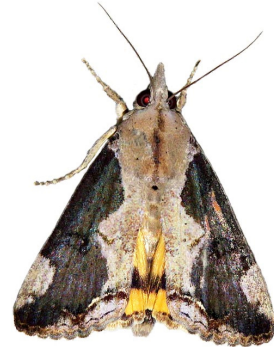
Hypocala deflorata (Fabricius, 1794)
Malolotja and Mlawula Checklists



Hypocala plumicornis Guenée, 1852
UCT-ADU LepiMAP



Hypocala rostrata (Fabricius, 1794)
UCT-ADU LepiMAP



Erebidae: Lymantriinae

(not identified)
iNaturalist

Arao discalis Walker, 1855
Malolotja and Mlawula Checklists



Bracharoa dregei (Herrich - Schäffer, 1854)
UCT-ADU LepiMAP



Bracharoa quadripunctata (Wallengren, 1875)
Malototja and Mlawula Checklists



Cimola opalina Walker, 1855
BOLD

Creagra liturata (Guérin-Ménéville, 1844)
Malototja and Mlawula Checklists



Cropera testacea Walker, 1855
Afromoths: TMSA

Crorema adpersa (Herrich-Schäffer, 1854)
Malototja and Mlawula Checklists

Crorema setinoides (Holland, 1893)
UCT-ADU LepiMAP



Dasychira extatura (Distant, 1897)
Malototja and Mlawula Checklists
(*Laelia extatura*)



Dasychira octophora Hampson, 1905
Malototja and Mlawula Checklists
(*Laelia octophora*, *Bicellulophora argentea*)



Dicranuropsis vilis Felder R., 1874
iNaturalist



Eudasychira poliotis (Hampson, 1910)
Hermann Staude

Euproctis aethiopica Snellen, 1872
iNaturalist

Euproctis bicolor Janse, 1915
Malototja and Mlawula Checklists

Euproctis dewitzi (Grünberg, 1907)
Malototja and Mlawula Checklists



Euproctis haemodetes Hampson, 1905
UCT-ADU LepiMAP



Euproctis sanguigutta Hampson, 1905
UCT-ADU LepiMap Swaziland Species List
Nov 2016



Euproctis terminalis (Walker, 1855)
Malototja and Mlawula Checklists;
Afromoths: Krüger (2015)

Hemerophanes libyra (Druce, 1896)
UCT-ADU LepiMap



Knappetra fasciata fasciata (Walker, 1855)
Malototja and Mlawula Checklists
(*Knappetra fasciata*)



Lacipa gemmata Distant, 1897
UCT-ADU LepiMAP



Lacipa gracilis Hopffer, 1857
iNaturalist



Lacipa nobilis nobilis (Herrich-Schäffer, 1855)
Malolotja and Mlawula Checklists
(*Lacipa nobilis*)



*

***Lacipa* sp.**
UCT-ADU LepiMAP



Laelia darki Janse, 1915
iNaturalist



Laelia curvirogata Karsch, 1895
Malolotja and Mlawula Checklists

Laelia extorta (Distant, 1897)
UCT-ADU LepiMap Swaziland Species List
Nov 2016



Laelia figlina Distant, 1899
UCT-ADU LepiMap



Laelia fracta Schaus & Clements, 1893
Malolotja and Mlawula Checklists



Laelia fusca (Walker, 1855)
UCT-ADU LepiMap



Laelia herbida (Walker, 1856)
UCT-ADU LepiMap



Laelia pyrosoma (Hampson, 1910)
Malolotja and Mlawula Checklists

Laelia rosea Schaus, 1893
UCT-ADU LepiMAP



Laelia sexpunctata Distant, 1897
iNaturalist



Laelia subrosea (Walker, 1855)
UCT-ADU LepiMAP



***Laelia* sp.**
UCT-ADU LepiMAP



Marblepsis flabellaria (Fabricius, 1787)
Hermann Staude



*

Morasa modesta Walker, 1855
Malolotja and Mlawula Checklists



Naroma varipes (Walker, 1865)
Malolotja and Mlawula Checklists;
Afro-moths: TMSA



Ogoa simplex Walker, 1856
UCT-ADU LepiMap



Palasea albimacula albimacula
Wallengren, 1863
UCT-ADU LepiMap



Paraproctis chionopeza Collenette, 1954
UCT-ADU LepiMap



Psalis africana Kiriakoff, 1956
Malolotja and Mlawula Checklists



*

Rhodesana daphne (Hering, 1926)
Malolotja and Mlawula Checklists
(*Laelia daphne*, *Dasychira daphne*)

Salvatgea xanthosoma (Hampson, 1910)
UCT-ADU LepiMap
(*Lymantriodes xanthosoma*)



Erebidae: Pangraptinae

Gracilodes caffra Guenée, 1852
Malolotja and Mlawula Checklists;
Afro-moths: TMSA



Gracilodes nysa Guenée, 1852
UCT-ADU LepiMap



Erebidae: Rivulinae

Ogla nana (Walker, 1869)
UCT-ADU LepiMap



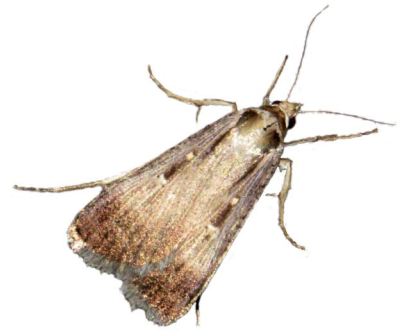
Erebidae: Toxocampinae

Lygephila salax (Guenée, 1852)
Afro-moths: Hacker & Fibiger (2006)

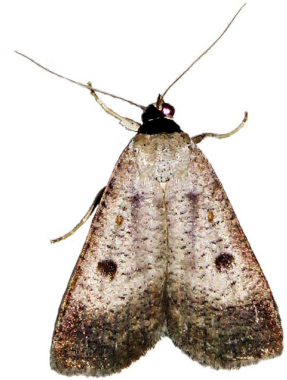


*

Tathorhynchus exsiccatus (Lederer, 1855)
Malolotja and Mlawula Checklists;
Afro-moths: TMSA



Tathorhynchus homogyna Hampson, 1902
UCT-ADU LepiMap



Tathorhynchus plumbea (Distant, 1898)
Malolotja and Mlawula Checklists;
Afro-moths: TMSA



Euteliidae: Euteliinae

Eutelia adalatrix (Hübner, 1813)
Malolotja and Mlawula Checklists



Eutelia amatrrix Walker, 1858
Malolotja and Mlawula Checklists



Eutelia callichroma Distant, 1901
UCT-ADU LepiMap



Eutelia favillatrix (Guenée, 1852)
iNaturalist

Eutelia gilvicolor Mabille, 1900
Malolotja and Mlawula Checklists

Eutelia polychorda Hampson, 1902
Malolotja and Mlawula Checklists



Eutelia subrubens (Mabille, 1890)
Malolotja and Mlawula Checklists



***Eutelia* sp.**
UCT-ADU LepiMap



Marathyssa cuneata (Saalmüller, 1891)
Malolotja and Mlawula Checklists



Phlegetonia catephioides (Guenée, 1852)
Malolotja and Mlawula Checklists
(*Eutelia catephioides*)

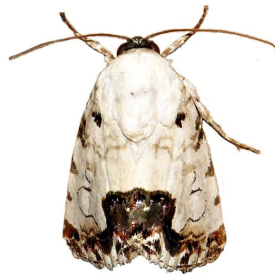


Euteliidae: Stictoperinae

Lophoptera litigiosa (Boisduval, 1833)
Malolotja and Mlawula Checklists
(*Lophoptera alutacea*)

Noctuidae: Acontinae

Acontia aurelia Hacker, Legrain & Fibiger,
2008
UCT-ADU LepiMAP



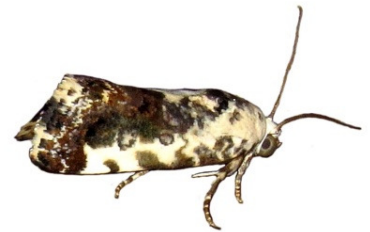
Acontia caffraria caffraria (Cramer, 1777)
Malolotja and Mlawula Checklists
(*Acontia caffraria*)



Acontia citripennis (Hampson, 1910)
Malolotja and Mlawula Checklists



Acontia conifrons Aurivillius, 1879
UCT-ADU LepiMAP



Acontia discoidea Hopffer, 1857
UCT-ADU LepiMAP



Acontia ectorrida (Hampson, 1916)
UCT-ADU LepiMAP



Acontia gratiosa Wallengren, 1856
Malolotja and Mlawula Checklists
(*Cardiosace olivescens*, *Acontia zelleri*)



Acontia guttifera guttifera Felder & Rogenhofer, 1874
Malotja and Mlawula Checklists
(*Acontia guttifera*)



Acontia imitatrix Wallengren, 1856
UCT-ADU LepiMAP



Acontia insocia (Walker, 1858)
Malotja and Mlawula Checklists
(*Metapioplasta insocia*)

Acontia margaritata (Drury, 1782)
Hermann Staude



Acontia melaphora (Hampson, 1910)
UCT-ADU LepiMAP



Acontia natalis natalis Guenée, 1852
UCT-ADU LepiMAP
(*Cardiosace natalis*)



Acontia nubila (Hampson, 1910)
Hermann Staude

Acontia nubilata (Hampson, 1902)
Hermann Staude

Acontia porphyrea (Butler, 1898)
UCT-ADU LepiMAP



Acontia psaliphora (Hampson, 1910)
Hermann Staude



Acontia transfigurata transfigurata
Wallengren, 1856
UCT-ADU LepiMAP
(*Acontia transfigurata*)



Acontia trychaenoides Wallengren, 1865
Malotja and Mlawula Checklists
(*Cardiosace triphaeniodes*)

***Acontia* sp.**
UCT-ADU LepiMAP

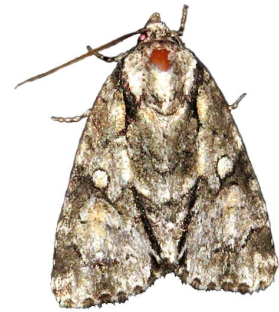


Hypercodia wheeleri Pinhey, 1968
UCT-ADU LepiMap



Noctuidae: Acronictinae

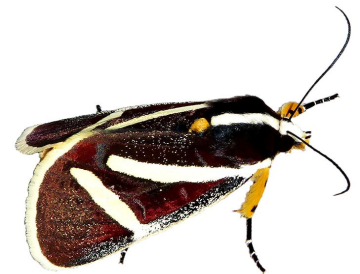
Acronicta transvalica Hampson, 1911
Malotja and Mlawula Checklists;
Afro moths: Haggis (1986): UCT-ADU
LepiMap



Acronicta verbenata (Distant, 1898)
Hermann Staude

Noctuidae: Agaristinae

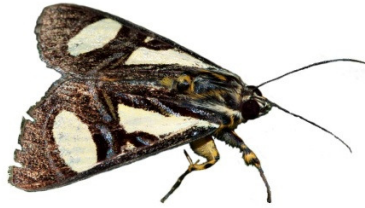
Aegocera fervida (Walker, 1854)
Malotja and Mlawula Checklists
(*Aegoceropis fervida*)



Aegocera tricolora Bethune-Baker, 1909
Project Noah (Photos by Tina Petterson)



Agoma trimenii (Felder R., 1874)
UCT-ADU LepiMap



Brephos festiva (Jordan, 1913)
Malolotja and Mlawula Checklists



Heraclia africana (Butler, 1875)
Malolotja and Mlawula Checklists



Heraclia superba (Butler, 1875)
UCT-ADU LepiMap



Ovios capensis (Herrich-Schäffer, 1854)
Malolotja and Mlawula Checklists



Schausia coryndoni (Rothschild, 1896)
Hermann Staude

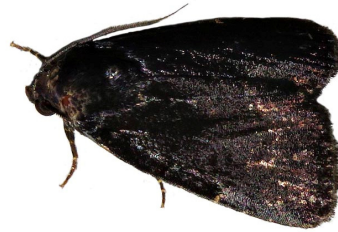


Noctuidae: Amphipyrinae

Callyna figurans Walker, 1858
Hermann Staude

Callyna monoleuca Walker, 1858
Malolotja and Mlawula Checklists

Callyna nigerrima Hampson, 1902
UCT-ADU LepiMAP



Noctuidae: Bagisarinae

Amyna axis Guenée, 1852
Malolotja and Mlawula Checklists
(*Ilattia octo*, *Amyna octo*)



Amyna natalica Strand, 1917
Malolotja and Mlawula Checklists

Amyna punctum (Fabricius, 1794)
Malolotja and Mlawula Checklists



Amyna sp.
UCT-ADU LepiMap

Brevipecten cornuta Hampson, 1902
iNaturalist



Chasmina tibialis (Fabricius, 1775)
Malolotja and Mlawula Checklists



Chasmina vestae (Guenée, 1852)
Hermann Staude

Xanthodes albago (Fabricius, 1794)
Malolotja and Mlawula Checklists



Xanthodes brunnescens (Pinhey, 1968)
Malolotja and Mlawula Checklists
(*Lophotidia brunnescens*)



Xanthodes sp.
BOLD

Noctuidae: Bryophilinae

Cryphia leucomelaena (Hampson, 1908)
UCT-ADU LepiMAP



Noctuidae: Condicinae

Condica capensis (Guenée, 1852)
Malolotja and Mlawula Checklists
(*Perigea capensis*)



Hadjina carcaroda (Distant, 1901)
Malolotja and Mlawula Checklists;
UCT-ADU LepiMAP



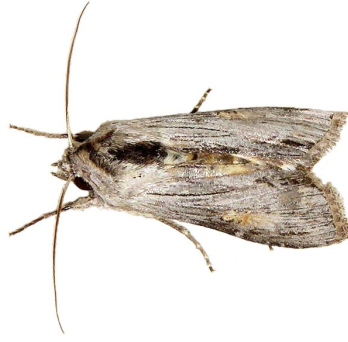
Perigea quadrimacula (Mabille, 1900)
Hermann Staude

Noctuidae: Cuculliinae

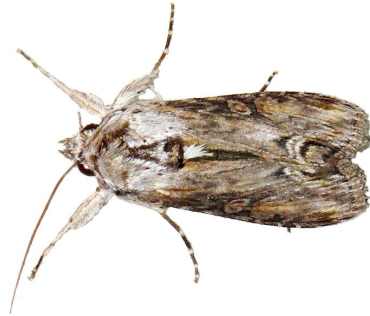
Cucullia chrysota Hampson, 1902
UCT-ADU LepiMAP



Cucullia consimilis Felder & Rogenhofer,
1874
Malolotja and Mlawula Checklists



Cucullia platti Prout A. E., 1925
UCT-ADU LepiMAP



Cucullia ruptifascia (Hampson, 1909)
Hermann Staude

Cucullia terensis Felder & Rogenhofer, 1874
Malolotja and Mlawula Checklists

Eumichtis rubrimixta Hampson, 1906
Malolotja and Mlawula Checklists

Leucochlaena aenigma Pinhey, 1968
Hermann Staude

Noctuidae: Eriopinae

Calloplistria latreillei (Duponchel, 1827)
Malolotja and Mlawula Checklists



Calloplistria maillardi (Guenée, 1862)
Malolotja and Mlawula Checklists

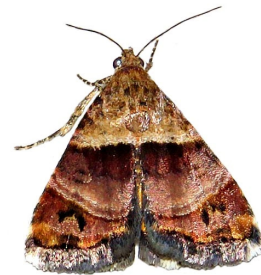


Calloplistria yerburii Butler, 1884
Malolotja and Mlawula Checklists



Noctuidae: Eustrotiinae

Acontiola cryptochrysea (Hampson, 1902)
Malolotja and Mlawula Checklists
(*Metachrostis cryptochrysea*, *Ozarba cryptochrysea*)



Acontiola heliastis (Hampson, 1902)
UCT-ADU LepiMap
(*Ozarba heliastis*)



Acontiola hypoxantha (Wallengren, 1860)
Malolotja and Mlawula Checklists
(*Ozarba hypoxantha*)



Acontiola varia (Walker, 1865)
Hermann Staude

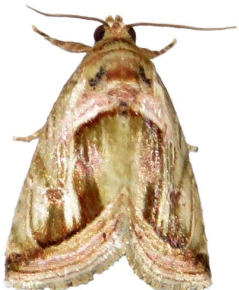
Acontiola vultuosa (Distant, 1898)
UCT-ADU LepiMap
(*Ozarba bisexualis*)



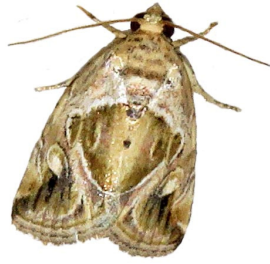
Aconzarba decissima (Walker, 1865)
UCT-ADU LepiMap



Deltote cumalineae Bethune-Baker, 1911
UCT-ADU LepiMap



Deltote johnjoannoui Mey & Kühne, 2014
UCT-ADU LepiMap



Deltote varicolora (Hampson, 1902)
Hermann Staude
(*Lithacodia normalis*)



Eustrotia bryophilina Hampson, 1910
Malolotja and Mlawula Checklists



Lithacodia caffristis Hampson, 1910
UCT-ADU LepiMAP



Maliattha blandula (Guenée, 1863)
Malolotja and Mlawula Checklists
(*Maliattha blandula*)



Maliattha subblandula Hacker, 2016
UCT-ADU LepiMAP



Mimasura tripunctoides Poole, 1989
Malolotja and Mlawula Checklists
(*Mimasura tripuncta*)



Ozarba abscissa Butler, 1884
UCT-ADU LepiMAP



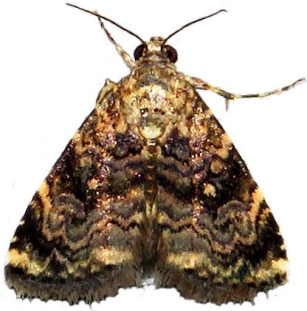
Ozarba accincta (Distant, 1898)
Malolotja and Mlawula Checklists



Ozarba albimarginata (Hampson, 1896)
Malolotja and Mlawula Checklists

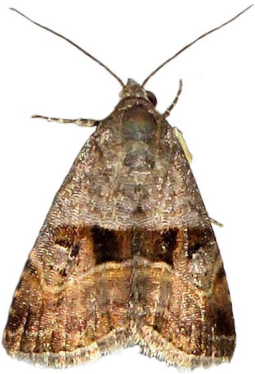


Ozarba apicalis Hampson, 1910
UCT-ADU LepiMap



Ozarba bipartita bipartita (Hampson, 1902)
Malolotja and Mlawula Checklists

Ozarba corniculans (Wallengren, 1860)
Malolotja and Mlawula Checklists



Ozarba hemiochra Hampson, 1910
Malolotja and Mlawula Checklists



Ozarba hemipolia Hampson, 1910
Malolotja and Mlawula Checklists

Ozarba hypotaenia (Wallengren, 1860)
Malolotja and Mlawula Checklists;
UCT-ADU LepiMap
(*Euloastra hypotaenia*)



Ozarba isocampta Hampson, 1910
Malolotja and Mlawula Checklists

Ozarba jansei Berio, 1940
UCT-ADU LepiMap



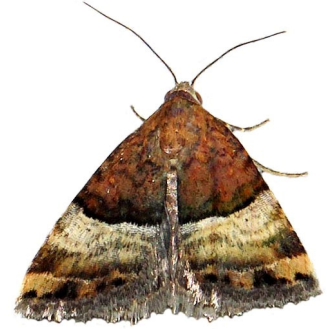
Ozarba madanda (Felder R. & Rogenhofer, 1875)
Malolotja and Mlawula Checklists

Ozarba nigroviridis (Hampson, 1902)
Hermann Staude



Ozarba phaea phaea (Hampson, 1902)
Hermann Staude

Ozarba semipurpurea (Hampson, 1902)
Malolotja and Mlawula Checklists



***Ozarba* sp.**
UCT-ADU LepiMap



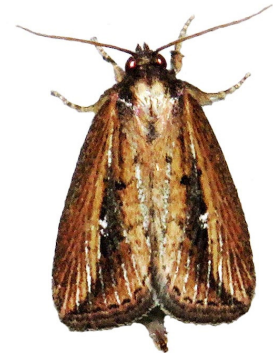
Pseudozarba opella (Swinhoe, 1885)
Malolotja and Mlawula Checklists



Noctuidae: Hadeninae

Acrapex aenigma (Felder R. & Rogenhofer, 1875)
Hermann Staude

Acrapex albivena Hampson, 1910
UCT-ADU LepiMap



Acrapex brunnea Hampson, 1910
Malolotja and Mlawula Checklists



Acrapex minima Janse, 1939
Hermann Staude

Acrapex spoliata (Walker, 1863)
UCT-ADU LepiMAP



Acrapex unicolora (Hampson, 1914)
Malolotja and Mlawula Checklists
(*Acrapex hemiphlebia*)
UCT-ADU LepiMap

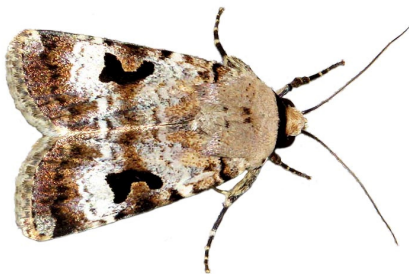


Afrogortyna trinota (Herrich-Schäffer, 1854)
Malolotja and Mlawula Checklists
(*Leucochlaena trinota*)

Apopasta dipterigidia (Hampson, 1902)
Malolotja and Mlawula Checklists

Apospasta fuscirufa (Hampson, 1905)
Malolotja and Mlawula Checklists
(*Polia fuscirufa*)

Ariathisa abyssinia (Guenée, 1852)
Malolotja and Mlawula Checklists
(*Spodoptera excisa*, *Spodoptera abyssinia*)



Aspidifrontia glaucescens Hampson, 1905
Hermann Staude

Aspidifrontia rufescens Hampson, 1902
UCT-ADU LepiMAP



Athetis albipuncta (Hampson, 1902)
Malolotja and Mlawula Checklists

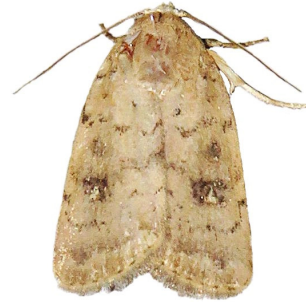
Athetis albirena (Hampson, 1902)
Hermann Staude

Athetis chionephra (Hampson, 1911)
Hermann Staude

Athetis collaris (Wallengren, 1856)
Malolotja and Mlawula Checklists

Athetis excurvata (Janse, 1938)
Hermann Staude

Athetis flavipuncta Hampson, 1909
UCT-ADU LepiMAP



Athetis foveata Hampson, 1909



Athetis heliastis Hampson, 1909
UCT-ADU LepiMAP



Athetis ignava (Guenée, 1852)
Malolotja and Mlawula Checklists



Athetis melanephra Hampson, 1909
Hermann Staude

Athetis melanomma Hampson, 1920
Malolotja and Mlawula Checklists

Athetis melanopis Hampson, 1909
Hermann Staude

Athetis nephrosticta Hampson, 1909
UCT-ADU LepiMAP



Athetis pallicornis (Felder R. & Rogenhofer, 1875)
Hermann Staude

Athetis pigra (Guenée, 1852)
Malolotja and Mlawula Checklists



Athetis robertsi (Janse, 1938)
Hermann Staude

Athetis satellitia (Hampson, 1902)
UCT-ADU LepiMAP



Athetis singula (Möschler, 1884)
Hermann Staude

Athetis transvalensis (Janse, 1938)
Hermann Staude

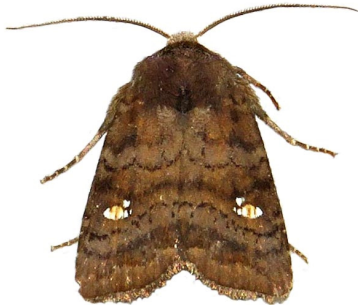
Busseola fusca (Fuller, 1901)
Malolotja and Mlawula Checklists



Caradrina glaucistis Hampson, 1902
UCT-ADU LepiMap



Caradrina tenebrata Hampson, 1902
Malolotja and Mlawula Checklists



Cetola costata Gaede, 1915
UCT-ADU LepiMAP



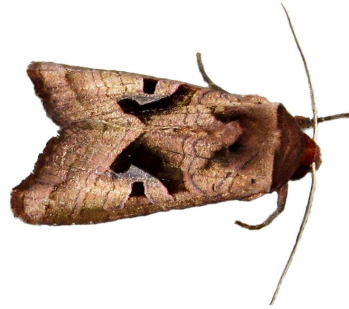
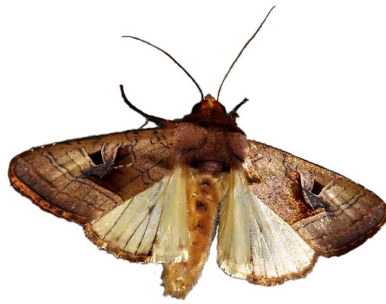
Cetola pulchra (Bethune-Baker, 1911)
Hermann Staude



Conservula alambica Gaede, 1915
Malolotja and Mlawula Checklists
(*Apana alambica*)



Conservula cinisignade Joannis, 1906
Malolotja and Mlawula Checklists
(*Apana cinisigma*)



Conservula minor Holland, 1896
Malolotja and Mlawula Checklists
(*Apana minor*)

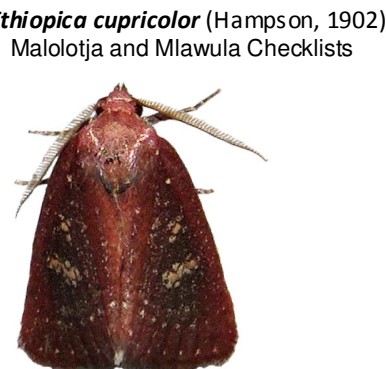
Cosmia natalensis (Prout A. E., 1925)
Malolotja and Mlawula Checklists
(*Xylomania natalensis?*)



Diaphone eumela (Cramer, 1781)
Malolotja and Mlawula Checklists



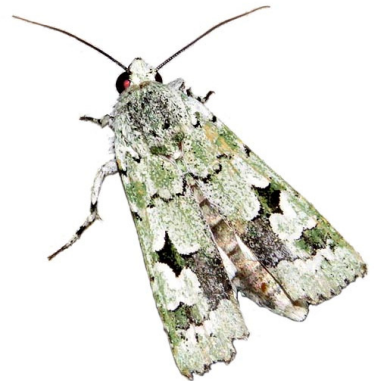
Dicerogastra nr furvilinea (Hampson, 1902)
Malolotja and Mlawula Checklists
(*Polia nr furvilinea*)



Ethiopica vinosa (Hampson, 1902)
Hermann Staude



Ethioterpia lichenea Janse, 1938
UCT-ADU LepiMap



Hadena bulgeri (Felder & Rogenhofer, 1874)
Malolotja and Mlawula Checklists



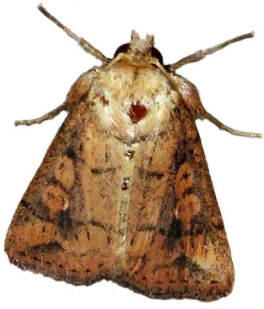
Hypoplexia conjuncta Hampson, 1908
Malolotja and Mlawula Checklists

Janseodes melanospila (Guenée, 1852)
Malolotja and Mlawula Checklists

Leucania atrinota (Hampson, 1905)
UCT-ADU LepiMap



Leucania cupreata (Hampson, 1905)
UCT-ADU LepiMap
(*Borolia cupreata*)



Leucania curvula Walker, 1856
UCT-ADU LepiMap



Leucania loreyi (Duponchel, 1827)
Hermann Staude



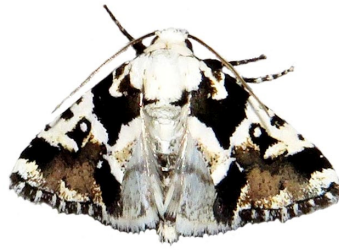
Leucania melanostrotata (Hampson, 1905)
UCT-ADU LepiMap



Leucania phaea Hampson, 1902
Malolotja and Mlawula Checklists
(*Mythimna phaea*)

Leucania pinna Saalmüller, 1891
Hermann Staude
(*Vietteania pinna*)

Leucotrachea melanodonta (Hampson, 1902)
UCT-ADU LepiMap



Leumicamia leucosoma (Felder R. & Rogenhofer, 1875)
Malolotja and Mlawula Checklists;
UCT-ADU LepiMAP



Lophotarsia ochroprocta Hampson, 1902
Malolotja and Mlawula Checklists



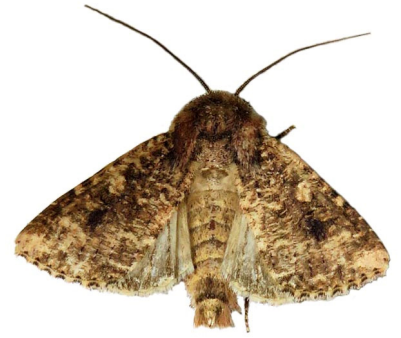
Mimleucania perstriata Hampson, 1909
Malolotja and Mlawula Checklists

Mythimna apparata (Wallengren, 1875)
Malolotja and Mlawula Checklists
(*Borolia apparata*)

Mythimna brantsii (Snellen, 1872)
UCT-ADU LepiMap



Mythimna calebs (Grünberg, 1910)
UCT-ADU LepiMAP



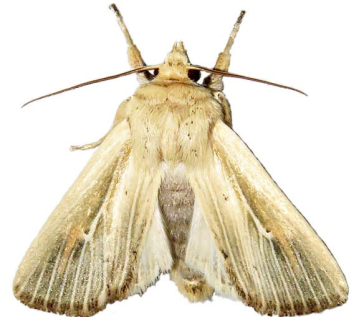
Mythimna combinata (Walker, 1857)
UCT-ADU LepiMAP



Mythimna hamata (Wallengren, 1856)
UCT-ADU LepiMAP



Mythimna interciliata (Hampson, 1902)
UCT-ADU LepiMAP



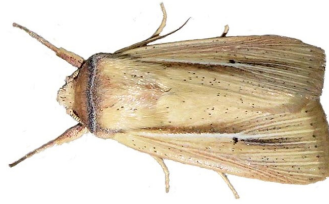
Mythimna internata (Möschler, 1884)
Malolotja and Mlawula Checklists
(*Borolia rhabdophora*)



Mythimna laevusta Berio, 1955
Malolotja and Mlawula Checklists
(*Cirphis usta*, *Aletia laevusta*)



Mythimna prominens (Walker, 1856)
UCT-ADU LepiMap



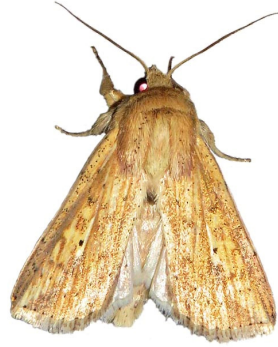
Mythimna tincta (Walker, 1858)
UCT-ADU LepiMap



Mythimna languida (Walker, 1858)
UCT-ADU LepiMap



Mythimna pyrausta (Hampson, 1913)
UCT-ADU LepiMap



Mythimna ustata (Hampson, 1907)
Hermann Staude



Mythimna viettei Rungs, 1956
UCT-ADU LepiMap



Mythimna melianoides (Möschler, 1884)
UCT-ADU LepiMap



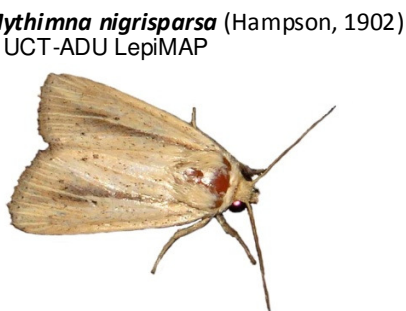
Mythimna rubescens (Hampson, 1905)
UCT-ADU LepiMap



***Mythimna* sp.**
UCT-ADU LepiMap



Mythimna nebulosa (Hampson, 1902)
Hermann Staude



Mythimna sarca (Hampson, 1902)
Malolotja and Mlawula Checklists
(*Senta sarca*)



Neostichtis nigricostata (Hampson, 1908)
Malolotja and Mlawula Checklists

Nyodes viridirufa (Hampson, 1918)
Hermann Staude

Ochrocalama xanthia (Hampson, 1905)
Malolotja and Mlawula Checklists

Odontestra conformis Hampson, 1918
Hermann Staude

Odontestra speyeri (Felder & Rogenhofer, 1874)
Malolotja and Mlawula Checklists
(*Polia speyeri*, *Brithysana speyeri*, *Odontestra bulgeri*)

Mythimna phaeochroa (Hampson, 1905)
Malolotja and Mlawula Checklists
(*Borolia phaeochroa*)



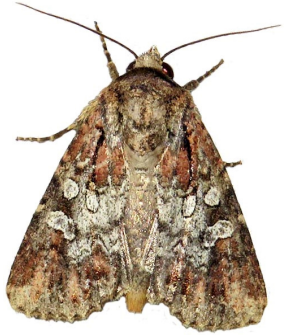
Mythimna tacuna (Felder & Rogenhofer, 1874)
Malolotja and Mlawula Checklists
(*Borolia tacuna*)



Oligia ambigua (Walker, 1858)
Malolotja and Mlawula Checklists



Oligia confusa Jansé, 1937
Malotja and Mlawula Checklists



Omphalestra mesoglauca (Hampson, 1902)
UCT-ADU LepiMap

Tycomarptes praetermissa (Walker, 1857)
UCT-ADU LepiMap



Heliothis confifera (Hampson, 1913)
Malotja and Mlawula Checklists;
Afro-moths: Hacker, Schreier & Goater
(2012)
(*Heliothis fuscimacula*)

Heliothis flavigera (Hampson, 1907)
Malotja and Mlawula Checklists
(*Heliothis flavescens*)

Heliothis flavirufa (Hampson, 1910)
Malotja and Mlawula Checklists;
Afro-moths: Schintlmeister & Witt (2015)
(*Calamia flavirufa*)



Polia cuprescens Hampson, 1905
Malotja and Mlawula Checklists

Ramesodes divisa (Hampson, 1902)
Malotja and Mlawula Checklists



Vietteania intestata (Walker, 1856)
Malotja and Mlawula Checklists
(*Vietteania torrentium*)



Vietteania torrentium (Guenée, 1852)
Hermann Staude

Noctuidae: Heliothinae

Adisura aerugo (Felder & Roggenhofer,
1874)
UCT-ADU LepiMap



Tracheplexia lucia (Felder E. & Roggenhofer,
1875)
Malotja and Mlawula Checklists

Tumidifrontia castaneotincta Hampson,
1902
Malotja and Mlawula Checklists

Tycomarptes inferior (Guenée, 1852)
Malotja and Mlawula Checklists



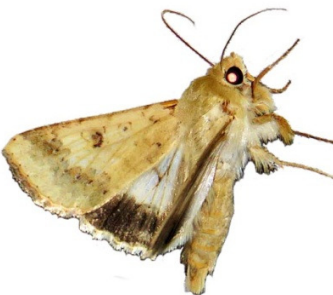
Heliothis scutuligera Guenée, 1852
Malotja and Mlawula Checklists
(*Heliothis scutuligera*)



Timora galathea (Wallengren, 1856)
Malotja and Mlawula Checklists
(*Masalia galathea*, *Heliothis galathea*)



Helicoverpa armigera armigera (Hübner,
1808)
Malotja and Mlawula Checklists



Noctuidae: Incertae Sedis

Grammarctia bilinea (Walker, 1865)
Malotja and Mlawula Checklists



Helicoverpa assulta (Guenée, 1852)
Afro-moths: Hacker, Schreier & Goater
(2012)



Proschaliphora albida Hampson, 1909
UCT-ADU LepiMap



Noctuidae: Noctuinae

Androlymnia torsivena (Hampson, 1902)
UCT-ADU LepiMap



Euplexia augens Felder R. & Rogenhofer, 1875
Malolotja and Mlawula Checklists

Euplexia catephiodes Hampson, 1908
Malolotja and Mlawula Checklists

Feliniopsis consummata consummata
(Walker, 1857)
Malolotja and Mlawula Checklists
(*Eutamisia consummata*)



*

Feliniopsis indigna (Herrich-Schäffer, 1854)
Malolotja and Mlawula Checklists
(*Trachea breviscula*)

Feliniopsis sp.
UCT-ADU LepiMAP



Iambia inferalis Walker, 1863
UCT-ADU LepiMap



Iambia jansei Berio, 1966
Malolotja and Mlawula Checklists



Iambia melanochlora (Hampson, 1902)
UCT-ADU LepiMAP



Iambiodes nyctostola Hampson, 1918
Malolotja and Mlawula Checklists



Interdelta mediafricana Berio, 1964
Malolotja and Mlawula Checklists

Leucotrachea melanobasis (Hampson, 1902)
UCT-ADU LepiMAP



Leumicamia leucosoma (Felder R. & Rogenhofer, 1875)
Malolotja and Mlawula Checklists



Magusa versicolora Saalmüller, 1891
Malolotja and Mlawula Checklists



Magusa viettei (Berio, 1955)
Malolotja and Mlawula Checklists



Magusa sp.
UCT-ADU LepiMap
(*Callixena sp.*)



Matopo typica Distant, 1898
Malolotja and Mlawula Checklists

Stenopterygia firmivena (Walker, 1857)
Malolotja and Mlawula Checklists

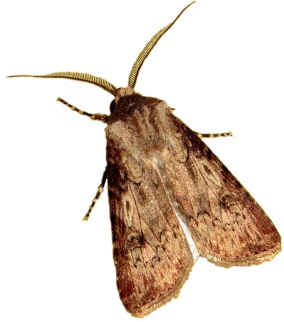


Noctuidae: Noctuinae: Glottulini

Brithys crini crini Fabricius, 1775
iNaturalist

Noctuidae: Noctuinae: Noctuini

Agrotis denticulosa Wallengren, 1860
Malolotja and Mlawula Checklists
(*Agrotis longidentifera*)



Agrotis ipsilon (Hufnagel, 1766)
Malolotja and Mlawula Checklists



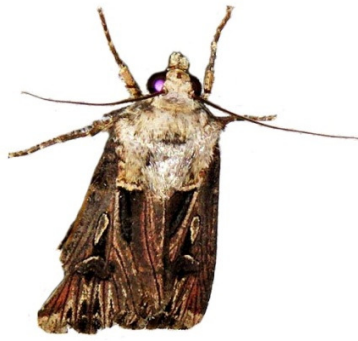
Agrotis oliveatus Hampson, 1902
Malolotja and Mlawula Checklists
(*Lycophotia oliveata*)



Agrotis segetum (Denis & Schiffermüller, 1775)
Malolotja and Mlawula Checklists



Agrotis spinifera (Hübner, 1808)
Malolotja and Mlawula Checklists
(*Agrotis biconicus*)



Amazonides atrisigna (Hampson, 1911)
Malolotja and Mlawula Checklists

Amazonides epipyria (Hampson, 1903)
Hermann Staude



Axylia annularis Saalmüller, 1891
UCT-ADU LepiMap



Axylia ustula (Hampson, 1913)
Malolotja and Mlawula Checklists
(*Amazonides ustula*)

Effractalis effracta (Distant, 1898)
UCT-ADU LepiMap



Lycophotia eevinacea Hampson, 1903
Malolotja and Mlawula Checklists

Lycophotia melanephra Hampson, 1909
Malolotja and Mlawula Checklists



Mentaxya albifrons (Geyer, 1837)
Malolotja and Mlawula Checklists



Mentaxya atritegulata (Hampson, 1902)
Malolotja and Mlawula Checklists

Mentaxya ignicollis (Walker, 1857)
Malolotja and Mlawula Checklists



Mentaxya rimosa (Guenée, 1852)
Malolotja and Mlawula Checklists

Micragrotis interstriata (Hampson, 1902)
Malolotja and Mlawula Checklists
(*Amazonides interstriata*)



Ochropleura leucogaster (Freyer, 1831)
Hermann Staude



*

Ochropleura perirrorata (Hampson, 1902)
Malolotja and Mlawula Checklists
(*Lycophotia perirrorata*)

Ochropleura reductistriga Krüger, 2005
Afromoths: Schintlmeister & Witt (2015)

Noctuidae: Oncocnemidinae

Anedhella interrupta (Janse, 1938)
UCT-ADU LepiMAP



Anedhella rectiradiata (Hampson, 1902)
UCT-ADU LepiMAP

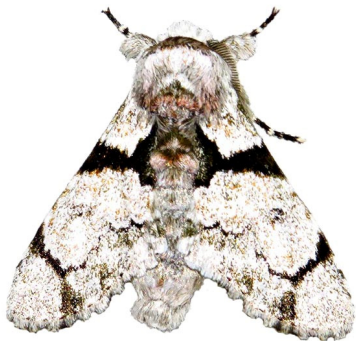


Noctuidae: Pantheinae

Thiacidas fractilinea (Pinhey, 1968)
Afromoths: Schintlmeister & Witt (2015)

Thiacidas nigrimacula (Pinhey, 1968)
Afromoths: Schintlmeister & Witt (2015)

Thiacidas senex (Bethune-Baker, 1911)
UCT-ADU LepiMAP



Noctuidae: Plusiinae: Abrostolini

Abrostola brevipennis (Walker, 1858)
Malolotja and Mlawula Checklists



**Noctuidae: Plusiinae:
Argyrogrammatini**

Chrysodeixis acuta (Walker, 1858)
Malolotja and Mlawula Checklists



Chrysodeixis chalcites (Esper, 1798)
Malolotja and Mlawula Checklists



Ctenoplusia accentifera (Lefévre, 1827)
UCT-ADU LepiMAP



Ctenoplusia dorfmeisteri (Felder &
Rogenhofer, 1874)
UCT-ADU LepiMAP



Ctenoplusia fracta (Walker, 1858)
Malolotja and Mlawula Checklists



*

Ctenoplusia limbirena (Guenée, 1852)
Malolotja and Mlawula Checklists



Ctenoplusia melanocephala (Möschler,
1884)
Malolotja and Mlawula Checklists
(*Plusia melanocephala*)

Ctenoplusia molybdina (Dufay, 1968)
Malolotja and Mlawula Checklists
(*Trichoplusia molybdina*)



Ctenoplusia phocea (Hampson, 1910)
Malolotja and Mlawula Checklists

Ctenoplusia polycampta Dufay, 1972
Malolotja and Mlawula Checklists

Thysanoplusia angulum Guenée, 1852
Malolotja and Mlawula Checklists
(*Trichoplusia angulum*)

Thysanoplusia exquisita (Felder &
Rogenhofer, 1874)
Malolotja and Mlawula Checklists
(*Trichoplusia exquisita*)

Thysanoplusia indicator (Walker, 1858)
Malolotja and Mlawula Checklists
(*Trichoplusia indicator*)



Thysanoplusia orichalcea (Fabricius, 1775)
Malolotja and Mlawula Checklists
(*Trichoplusia orichalcea*)



Thysanoplusia rectilinea ([author])
UCT-ADU LepiMAP



Thysanoplusia violascens (Hampson, 1913)
Malolotja and Mlawula Checklists
(*Trichoplusia violescens*)



Trichoplusia ni (Hübner, 1803)
Malolotja and Mlawula Checklists

Vittaplusia vittata (Wallengren, 1856)
Malolotja and Mlawula Checklists
(*Trichoplusia vittata*)



Noctuidae: Plusiinae: Plusiini

Cornutiplusia circumflexa (Linnaeus, 1767)
Malolotja and Mlawula Checklists



Noctuidae: Xyleninae

Catamecia connectens (Hampson, 1902)
Hermann Staude

Cyclopera bucephalidia (Hampson, 1902)
BOLD

Phalerodes cauta (Hampson, 1902)
Malolotja and Mlawula Checklists



Sesamia rubritincta Hampson, 1902
Hermann Staude

Sesamia sylvata Janse, 1939
Hermann Staude

Spodoptera apertura (Walker, 1865)
Malolotja and Mlawula Checklists



Spodoptera cilium Guenée, 1852
UCT-ADU LepiMAP



Spodoptera exempta (Walker, 1857)
Malolotja and Mlawula Checklists;
Afro-moths: Schintlmeister & Witt (2015)

Spodoptera exigua (Hübner, 1808)
Malolotja and Mlawula Checklists



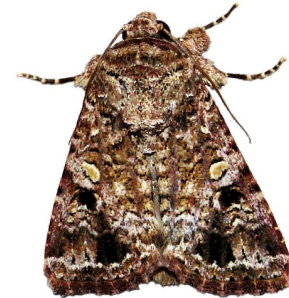
Spodoptera littoralis (Boisduval, 1833)
Malolotja and Mlawula Checklists



Spodoptera mauritia (Boisduval, 1833)
UCT-ADU LepiMAP



Spodoptera triturrata (Walker, 1857)
Malolotja and Mlawula Checklists;
UCT-ADU LepiMAP



Tracheplexia amaranta (Felder R. &
Rogenhofer, 1875)
Hermann Staude

Nolidae: Blenininae

Blenina squamifera (Wallengren, 1860)
Malolotja and Mlawula Checklists



Nolidae: Chloephorinae

Earias biplaga Walker, 1866
Malolotja and Mlawula Checklists
(*Earias citrina*)



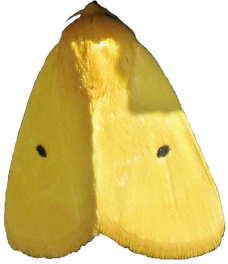
Earias cupreoviridis (Walker, 1862)
Malolotja and Mlawula Checklists



Earias insulana (Boisduval, 1833)
Malolotja and Mlawula Checklists



Leocyma appollinis Guenée, 1852
iNaturalist



Nolidae: Chloephorinae: Chloephorini

Not identified
UCT-ADU LepiMAP



Acripia chloropera Hampson, 1902
Malolotja and Mlawula Checklists

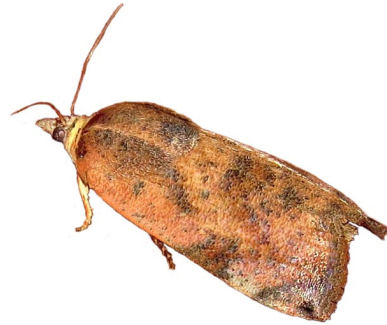
Acripia semiviridis Hampson, 1902
Malolotja and Mlawula Checklists



Acripia subolivacea Walker, 1863
UCT-ADU LepiMAP



Acripia sp.
UCT-ADU LepiMAP



Arcyophora longivalvis Guenée, 1852
UCT-ADU LepiMAP



Lophocrama phoenicochlora Hampson,
1912
UCT-ADU LepiMap



Maurilia arcuata (Walker, 1858)
Malolotja and Mlawula Checklists



Neaxestis griseata (Strand, 1909)
UCT-ADU LepiMAP



Neaxestis rhoda Hampson, 1905
Malolotja and Mlawula Checklists



Nolidae: Chloephorinae: Sarrothripini

Bryophilopsis tarachoides Mabilie, 1900
Malolotja and Mlawula Checklists

Characoma submediana Wiltshire, 1986
UCT-ADU LepiMAP



Nycteola mauritia (Joannis, 1906)
UCT-ADU LepiMAP



Pardasena virgulana (Mabille, 1880)
Malotja and Mlawula Checklists

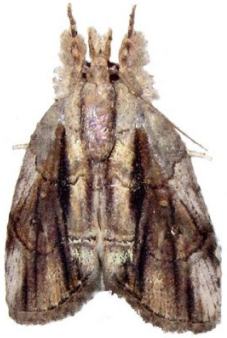


Pardasena sp.
UCT-ADU LepiMap



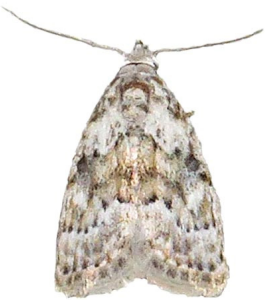
Nolidae: Eligminae

Selepa transvalica Hampson, 1912
UCT-ADU LepiMap



Nolidae: Nolinae

Mecothrix phaeocraspis (Hampson, 1909)
UCT-ADU LepiMap



Meganola argyromorpha Hacker, 2012
UCT-ADU LepiMap



Meganola bipartita (van Son, 1933)
UCT-ADU LepiMap



Meganola leucalea (Hampson, 1907)
Malotja and Mlawula Checklists
(*Nola leucalea*)



Meganola monofascia (van Son, 1933)
UCT-ADU LepiMap



Meganola sp.
UCT-ADU LepiMap



Nola barbertonensis (van Son, 1933)
Malotja and Mlawula Checklists
(*Celama barbertonensis*)

Nola melanocelis (Hampson, 1914)
Malotja and Mlawula Checklists
(*Celama melanocelis*)



Nola socotrensis vansoni Hacker, 2012
Afromoths: Schintlmeister & Witt (2015)



Nola tineoides (Walker, 1858)
Malolotja and Mlawula Checklists
(*Celama melanocelis*)



***Nola* sp.**
UCT-ADU LepiMap



Nolidae: Westermanniinae

Westermannia convergens Hampson, 1902
Malolotja and Mlawula Checklists

Notodontidae

Notodontidae: Cerinae

Lopiena rubritincta (Hampson, 1910)
UCT-ADU LepiMap



Notodontidae: Cerurinae

Cerurella natalensis Kiriakoff, 1962
Afromoths: Schintlmeister & Witt (2015)



Hampsonita esmeralda (Hampson, 1910)
Malolotja and Mlawula Checklists;
Afromoths: Schintlmeister & Witt (2015)



Notocerura spiritalis (Distant, 1899)
Afromoths: Schintlmeister & Witt (2015)

Pararethona hierax (Distant, 1897)
Malolotja and Mlawula Checklists;
Afromoths: Schintlmeister & Witt (2015)



Pseudorethona albicans (Walker, 1855)
Malolotja and Mlawula Checklists



Notodontidae: Dicranurinae

Afroplitis bergeri sulaki Schintlmeister &
Witt, 2015
Afromoths: Schintlmeister & Witt (2015)

Afroplitis phyllocampa (Trimen, 1909)
UCT-ADU LepiMap Swaziland Species List
Nov 2016

Amyops ingens Karsch, 1895
Afromoths: Schintlmeister & Witt (2015)



Atrasana postica Walker, 1856
Malolotja and Mlawula Checklists;
Afromoths: Schintlmeister & Witt (2015)



Atrasana uncifera (Hampson, 1910)
Afromoths: Schintlmeister & Witt (2015)

Catochria postflava Kiriakoff, 1955
Afromoths: Schintlmeister & Witt (2015)

Chlorocalliope calliope (Hampson, 1910)
Afromoths: Schintlmeister & Witt (2015)

Desmeocraera basalis Distant, 1899
Afromoths: Schintlmeister & Witt (2015)

Desmeocraera bethunebakeri
Schintlmeister & Witt, 2015
Afromoths: Schintlmeister & Witt (2015)

Desmeocraera distanti Schintlmeister &
Witt, 2015
Afromoths: Schintlmeister & Witt (2015)

Desmeocraera hattinghorum
Schintlmeister & Witt, 2015
Afromoths: Schintlmeister & Witt (2015)

Desmeocraera interpellatrix interpellatrix
(Wallengren, 1860)
UCT-ADU LepiMap; Afromoths:
Schintlmeister & Witt (2015)
(*Desmeocraera interpellatrix*)



Desmeocraera latex (Druce, 1901)
Afromoths: Schintlmeister & Witt (2015)



Desmeocraera nugatrix Felder, 1874
Malolotja and Mlawula Checklists;
Afromoths: Schintlmeister & Witt (2015)
(*Desmeocraera griseoviridis*)

Desmeocraera octoginta octoginta
(Hampson, 1910)
Afromoths: Schintlmeister & Witt (2015)



Desmeocraera oliva Kiriakoff, 1968
Afro-moths: Schintlmeister & Witt (2015)

Desmeocraera platti platti Janse, 1920
Malolotja and Mlawula Checklists
(*Desmeocraera platti*)



Desmeocraera vernalis Distant, 1897
Afro-moths: Schintlmeister & Witt (2015)



Desmeocraera sp.
UCT-ADU LepiMap



Stauropida griseola Kiriakoff, 1962
Afro-moths: Kovtunovich & Ustjuzhanin (2012)

Notodontidae: Notodontinae

Bilulua atricollis Kiriakoff, 1954
Afro-moths: Schintlmeister & Witt (2015)

Epicerura steniptera (Hampson, 1910)
Afro-moths: Schintlmeister & Witt (2015)

Helga cinerea (Janse, 1920)
Afro-moths: Schintlmeister & Witt (2015)

Leptolepida varians (Kiriakoff, 1962)
Afro-moths: Schintlmeister & Witt (2015)



Polelassothys plumitarsus Janse, 1920
iNaturalist



Psalisodes atrifasciata Hampson, 1910
Afro-moths: Schintlmeister & Witt (2015)

Psalisodes dimorpha Kiriakoff, 1968
Hermann Staude

Psalisodes discalis (Hampson, 1910)
Afro-moths: Schintlmeister & Witt (2015)

Rhenea mediata (Walker, 1865)
Malolotja and Mlawula Checklists;
Afro-moths: Schintlmeister & Witt (2015)



Rosinella rosinaria (Hampson, 1910)
Afro-moths: Schintlmeister & Witt (2015)



Sarimarais bicolor (Distant, 1899)
Malolotja and Mlawula Checklists;
Afro-moths: Epstein & Brown (2003)



Stemmatophalera curvilinea (Swinhoe, 1907)
Malolotja and Mlawula Checklists;
Afro-moths: Kovtunovich & Ustjuzhanin (2009)
(*Acrasiella curvilinea*)

Stemmatophalera persimilis (Hampson, 1910)
Afro-moths: Kovtunovich & Ustjuzhanin (2012)

Stemmatophalera sjostedti Aurivillius, 1910
Afro-moths: Kovtunovich & Ustjuzhanin (2012)

Stenostaura janssei (Kiriakoff, 1970)
Afro-moths: Kovtunovich & Ustjuzhanin (2012)

Notodontidae: Phalerinae

Anthea aurifodinae (Distant, 1902)
Malolotja and Mlawula Checklists;
Afro-moths: Schintlmeister & Witt (2015)

Anthea simplex Walker, 1855
Malolotja and Mlawula Checklists



Anthea tricolor Walker, 1855
UCT-ADU LepiMap



Eutimia marpissa Wallengren, 1858
Malolotja and Mlawula Checklists;
Afro-moths: Schintlmeister & Witt (2015)
(*Anthea marpissa*, *Eutimia anodonta*)

Eutimia spurcata (Walker, 1865)
Afromoths: Schintlmeister & Witt (2015)



Phalera imitata Druce, 1896
Afromoths: Schintlmeister & Witt (2015)



Phalera lydenburgi Distant, 1899
Afromoths: Schintlmeister & Witt (2015)



Polienus capillatus (Wallengren, 1875)
Malolotja and Mlawula Checklists



Rigema ornata Walker, 1865
Malolotja and Mlawula Checklists;
Afromoths: Schintlmeister & Witt (2015)
(*Antheua ornata*)



Rigema woerdeni (Snellen, 1872)
Malolotja and Mlawula Checklists
(*Antheua woerdeni*)

Notodontidae: Ptilodontidae

Batempa buceros (Kiriakoff, 1971)
Afromoths: Schintlmeister & Witt (2015)

Batempa mutabilis Schintlmeister & Witt, 2015
Afromoths: Schintlmeister & Witt (2015)

Eurystaura brunnea Janse, 1920
Hermann Staude

Eurystaurida iphis Kiriakoff, 1968
Afromoths: Schintlmeister & Witt (2015)

Notodontidae: Pygaerinae

Clostera lentisignata (Hampson, 1910)
Malolotja and Mlawula Checklists;
Afromoths: Schintlmeister & Witt (2015)

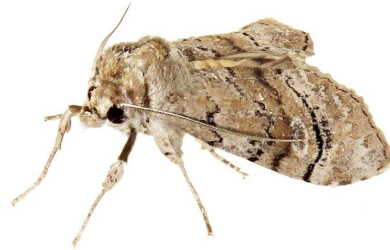
Clostera violacearia (Janse, 1920)
Afromoths: Schintlmeister & Witt (2015)

Janthinisca joannoui Schintlmeister & Witt, 2015
Afromoths: Schintlmeister & Witt (2015)

Peratodonta heterogyna (Hampson, 1910)
Afromoths: Schintlmeister & Witt (2015)

Notodontidae: Scraenciinae

Archistilbia mlawula Schintlmeister & Witt, 2015
Afromoths: Schintlmeister & Witt (2015)



Phycitimorpha dasychira (Hampson, 1910)
Hermann Staude

Postscraencia discomma (Jordan, 1916)
Afromoths: Schintlmeister & Witt (2015)

Thacona brunnescens (Gaede, 1928)
Afromoths: Kovtunovich & Ustjuzhanin (2012)

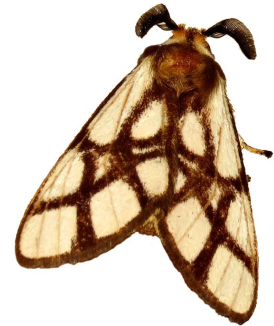
Thacona stictica (Hampson, 1910)
Afromoths: Kovtunovich & Ustjuzhanin (2012)

Notodontidae: Thaumetopoeinae

Anaphe panda (Boisduval, 1847)
Hermann Staude



Anaphe reticulata Walker, 1855
UCT-ADU LepiMap



Thaumetopoea apologetica Strand, 1909
UCT-ADU LepiMap

