

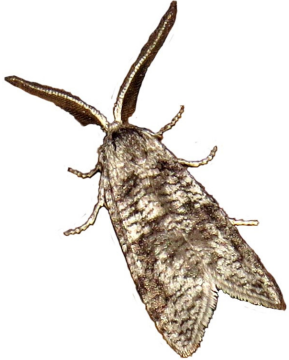
# Preliminary Eswatini Moths Checklist - PROVISIONAL – May 2023

## Part 4: Microlepidoptera

Adeloidea, Alucitoidea, Cossidea, Gelechioidea, Gracillarioidea, Hepialoidea, Hyblaeoidea, Pterophoroidea, Pyraloidea, Thyridoidea, Tineoidea, Tortricoidea, Yponomeutoidea, Zygaenoidea

Illustrations are from photos of live moths. Those marked with an asterisk are not from Eswatini, and are for reference only.

(not identified)  
UCT-ADU LepiMap



(not identified)



(not identified)



### Adeloidea

#### Adelidae: Nematopogoninae

*Ceromitia trigoniferella* (Walsingham, 1881)  
UCT-ADU LepiMap



*Ceromitia wahlbergi* Zeller, 1852  
UCT-ADU LepiMap



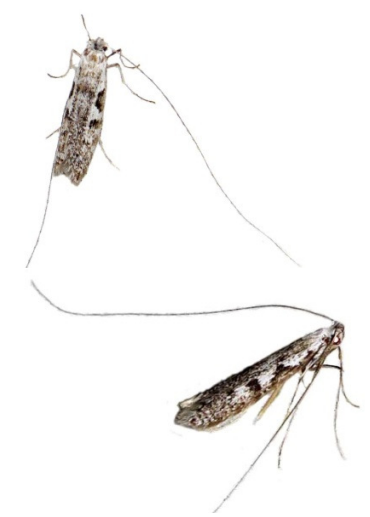
*Ceromitia sp. 1*  
UCT-ADU LepiMap



*Ceromitia sp. 2*  
UCT-ADU LepiMap



*Ceromitia sp. 3*  
UCT-ADU LepiMap



*Ceromitia sp. 4*  
UCT-ADU LepiMap



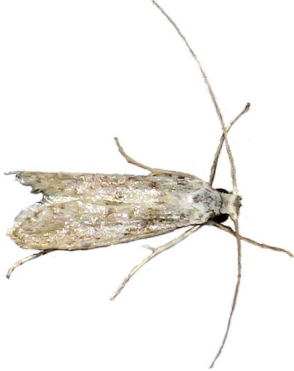
***Ceromitia sp. 5***  
UCT-ADU LepiMap



***Ceromitia sp. 6***  
UCT-ADU LepiMap



***Ceromitia sp. 7***  
UCT-ADU LepiMap



***Ceromitia sp. 8***  
UCT-ADU LepiMap



**Alucitoidea**  
**Alucitidae**

***Alucita phanerarcha*** (Meyrick, 1924)  
UCT-ADU LepiMAP



***Alucita spicifera*** (Meyrick, 1911)  
UCT-ADU LepiMAP



***Alucita sp.***  
UCT-ADU LepiMAP



**Choreutoidea**

**Choreutidae**

***Choreutis aegyptiaca*** (Zeller, 1867)  
UCT-ADU LepiMap



**Cossoidea**

**Brachodidae: Brachodinae**

***Archaeotychia albiciliata*** (Walsingham, 1891)  
Afromoths: Kallies (2016)

**Brachodidae: Phycodinae**

***Nigilgia albitogata*** (Walsingham, 1891)  
Afromoths: Kallies (2016)

***Nigilgia eucallynta*** (Meyrick, 1937)  
Afromoths: Kallies (2016)

***Nigilgia mochlophanes*** (Meyrick, 1921)  
Afromoths: Kallies (2016)

**Cossidae: Cossinae**

***Macrocossus tolininus*** (Druce, 1887)  
Afromoths: Yakovlev & Witt (2016)



***Rethona albifasciata*** (Hampson, 1910)  
Afromoths: Mey (2016)

**Cossidae: Zeuzerinae**

***Aethalopteryx obscurascens*** (Gaede, 1930)  
Afromoths: Yakovlev & Witt (2016)

***Aethalopteryx obsolete*** (Gaede, 1930)  
Afromoths: Borth, Ivinskis, Saldaitis & Yakovlev (2011)

***Aethalopteryx rudloffii*** Yakovlev, 2011  
Afromoths: Yakovlev (2011)

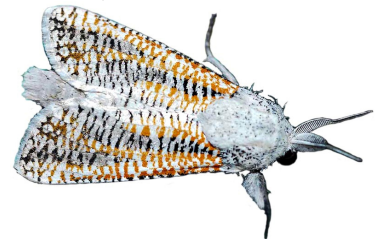
***Aethalopteryx tristis*** (Gaede, 1915)  
Afromoths: Yakovlev (2011)

***Azygophleps asylas*** (Cramer, 1777)  
Hermann Staude

***Azygophleps boisduvalii*** (Herrich-Schäffer, 1854)  
UCT-ADU LepiMap



***Azygophleps inclusa*** (Walker, 1856)  
Malolotja and Mlawula Checklists



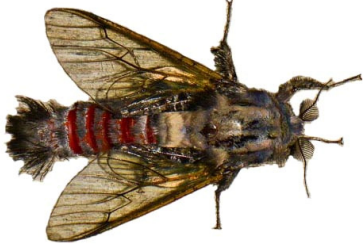
***Azygophleps leopardina*** Distant, 1902  
Afromoths: Mey (2016)



***Azygophleps sponda*** (Wallengren, 1875)  
UCT-ADU LepiMap  
(*Azygophleps defreina*)



***Eulophonotus hyalinipennis*** (Strand, 1910)  
Project Noah (Photos by Tina Petterson)



***Oreocossus kilimanjarensis*** (Holland, 1892)  
Malolotja and Mlawula Checklists

***Strigocossus capensis*** (Walker, 1856)  
Malolotja and Mlawula Checklists  
(*Xylocossus capensis*)



***Strigocossus crassa*** (Drury, 1782)  
Afromoths: Yakovlev & Witt (2016)

***Strigocossus elephas*** Yakovlev sp. nov.  
Afromoths: Yakovlev & Murphy (2013)



#### Metarbelidae

***Arbelodes albitorquata*** (Hampson, 1910)  
Afromoths

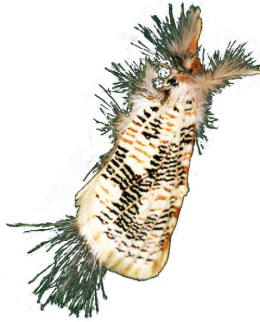
***Arbelodes* sp.**  
UCT-ADU LepiMAP



***Salagena obsolescens*** Hampson, 1910  
iNaturalist



***Salagena tessellata*** Distant, 1897  
Project Noah (Photos by Tina Petterson)



**Undescribed genus sp. 1**  
UCT-ADU LepiMAP



**Undescribed genus sp. 2**  
UCT-ADU LepiMAP



#### Sesiidae: Sesiinae: Osminiini

There are still quite a few of these small and inconspicuous species in this and other tribes that have not yet been described. (D. Bartsch, pers.comm.)

**(not identified)**

UCT-ADU LepiMAP



***Aenigmia albiapex*** Bartsch, 2016  
Afromoths: Bartsch D. 2016a

***Cabomina chalypsa*** (Hampson, 1919)  
Afromoths: Bartsch D. 2016a

***Cabomina ruthmuellerae*** Bartsch, 2016  
Afromoths: Bartsch D. 2016a

***Homogyna ignivittata*** Hampson, 1919  
Afromoths: Bartsch D. 2016a

***Homogyna sanguipennis*** (Meyrick, 1926)  
UCT-ADU LepiMAP



#### Sesiidae: Sesiinae: Paranthrenini

***Sura xylocopiformis*** Walker, 1856  
UCT-ADU LepiMAP



***Thyranthrene metazonata*** Hampson, 1919  
Afromoths: TMSA

#### Sesiidae: Sesiinae: Sesiini

***Felderiola candescens*** (Felder & Felder, 1874)  
Malolotja and Mlawula Checklists  
(listed as *Monopetalotaxis candescens*)

***Microsesia nana*** Bartsch, 2015  
Afromoths: Bartsch D. 2015

***Monopetalotaxis doleriformis*** (Walker, 1856)  
Bartsch, 2013

**Sesiidae: Sesiinae: Synanthedonini**

*Crinipus marisa* (Druce, 1899)  
Afromoths

*Synanthedon xanthopasta* Hampson, 1919  
Afromoths: TMSA  
(*Chamanthedon xanthopasta*)

**Gelechioidea**

**Coleophoridae: Coleophorinae**

*Coleophora swaziella* Baldizzone & van der  
Wolf, 2020  
Baldizzone & van der Wolf, 2020

**Cosmopterigidae: Chrysopeleinae**

*Gisilia sclerodes* (Meyrick, 1909)  
iNaturalist



**Cosmopterigidae: Cosmopteriginae**

*Cosmopterix attenuatella* (Walker, 1864)  
Afromoths: Koster (2016)

*Cosmopterix emmolybda* Meyrick, 1914  
Afromoths: Koster (2016)

**Depressariidae: Ethmiinae**

*Ethmia circumdatellus* (Walker, 1863)  
UCT-ADU LepiMap



*Ethmia livida* (Zeller, 1852)  
Hermann Staude

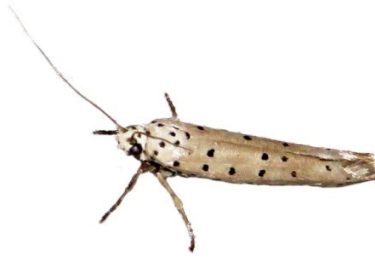
*Ethmia sabiella* (Felder & Rogenhofer, 1875)  
Malolotja and Mlawula Checklists



*Ethmia sp. 1*  
UCT-ADU LepiMap



*Ethmia sp. 2*  
UCT-ADU LepiMap



*Ethmia sp. 3*  
UCT-ADU LepiMap



**Depressariidae: Oditinae**

*Odites natalensis* Walsingham, 1891  
UCT-ADU LepiMap



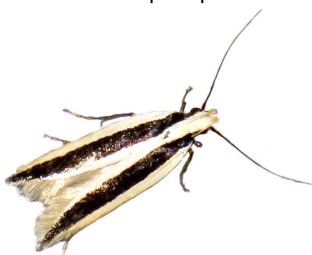
**Depressariidae: Stenomatinae**

*Orygocera* sp.  
UCT-ADU LepiMap



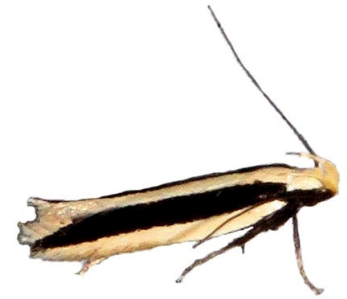
**Gelechioidea**

(not identified)  
UCT-ADU LepiMap



*Schizovalva stasiarcha* (Meyrick, 1913)  
UCT-ADU LepiMAP

Schizovalva stasiarcha: edge of costa white, Schizovalva  
trisignis: a little black on edge of costa



**Gelechioidea: Dichomeridinae**

*Dichomeris excepta* (Meyrick, 1914)  
UCT-ADU LepiMAP



*Dichomeris impigra* (Meyrick, 1913)  
UCT-ADU LepiMAP



*Dichomeris ithyaula* Meyrick, 1926  
iNaturalist

*Dichomeris subiridescens* (Janse, 1954)  
Afromoths: Krüger (2013)

**Gelechioidea: Gelechiinae**

*Amblyphylla lophozancla* Janse, 1960  
Afromoths: Janse (1954)

*Anarsia subfulvescens* Meyrick, 1918  
Afromoths: Krüger (2001a)

*Furcaphora caelata* (Meyrick, 1913)  
UCT-ADU LepiMAP

*Stegasta sattleri* Bidzilya & Mey, 2011  
UCT-ADU LepiMAP



**Lecithoceridae**

*(Lecithoceridae)*  
UCT-ADU LepiMAP

**Lecithoceridae: Torodorinae**

*Protolychnis maculata* (Walsingham, 1881)  
UCT-ADU LepiMAP



**Scythrididae: Scythridinae**

*Eretmocera laetissima* Zeller, 1852  
UCT-ADU LepiMAP



**Stathmopodidae: Stathmopodinae**

*Stathmopoda crassella* Walsingham, 1891  
UCT-ADU LepiMAP



*Stathmopoda maculata* Walsingham, 1891  
UCT-ADU LepiMAP



*Stathmopoda sp. 1*  
UCT-ADU LepiMAP



**Gracillarioidea**

**Gracillariidae: Phyllocnistinae**

*Phyllocnistis citrella* Stainton, 1856  
Afro-moths: TMSA

**Hepialoidea**

**Hepialidae**

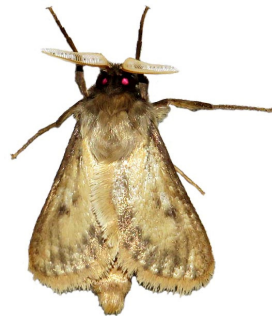
*Antihepialus antarcticus* (Wallengren, 1860)  
UCT-ADU LepiMAP



*Eudalaca sp.*  
UCT-ADU LepiMAP



*Gorgopis armillata* Meyrick, 1921  
UCT-ADU LepiMAP



*Gorgopis aurifuscata* Janse, 1942  
Afro-moths

*Gorgopis fuscalis* Janse, 1919  
Malotja and Mlawula Checklists

*Gorgopis inornata* Janse, 1942  
Malotja and Mlawula Checklists

*Gorgopis libania* (Cramer, 1781)  
Malotja and Mlawula Checklists, UCT-ADU  
LepiMAP



*Gorgopis sp.*  
UCT-ADU LepiMAP



\*



**Hyblaeoidea**

**Hyblaeidae**

*Hyblaea fontainei* Berio, 1967  
Malolotja and Mlawula Checklists

*Hyblaea puera* (Cramer, 1777)  
Hermann Staude

**Prodidactidae**

*Prodidactis mystica* (Meyrick, 1918)  
Afromoths: Gielis (2003)

**Pterophoroidea**

**Pterophoridae: Agdistinae**

*Agdistis linnaei* Gielis, 2008  
Afromoths: Kovtunovich & Ustjuzhanin (2012)

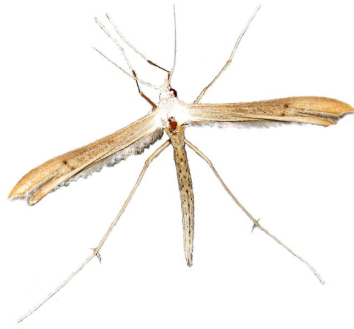
*Agdistis malleana* Arenberger, 1988  
Afromoths: Kovtunovich & Ustjuzhanin (2012)

*Agdistis toliarensis* Bigot, 1986  
Afromoths: Gielis (2003)

*Agdistis varii* Kovtunovich & Ustjuzhanin, 2009  
Afromoths: Kovtunovich & Ustjuzhanin (2012)

**Pterophoridae: Pterophorinae**

**(not identified)**  
UCT-ADU LepiMap



*Amblyptilia direptalis* (Walker, 1864)  
UCT-ADU LepiMAP



*Antarches tessmanni* (Strand, 1913)  
BOLD  
(*Antarches aguessei*, *Megalorhipida tessmanni*)

*Cosmoclostis brachybela* Fletcher D. S., 1947  
Afromoths: Kovtunovich & Ustjuzhanin (2012)

*Crassuncus pacifica* (Meyrick, 1911)  
Afromoths: Gielis (2003)  
(*Hellinsia pacifica*, *Hellinsia pura*)

*Eucapperia bullifera* (Meyrick, 1918)  
Afromoths: Kovtunovich & Ustjuzhanin (2012)

*Exelastis atomosa* (Walsingham, 1885)  
Afromoths: Kovtunovich & Ustjuzhanin (2012)

*Exelastis crepuscularis* (Meyrick, 1909)  
Afromoths: Kovtunovich & Ustjuzhanin (2012)

*Exelastis montischristi* (Walsingham, 1897)  
Afromoths: Gielis (2003)

*Exelastis pumilio* (Zeller, 1873)  
Afromoths: Kovtunovich & Ustjuzhanin (2012)

*Exelastis vuattouxi* Bigot, 1970  
Afromoths: Kovtunovich & Ustjuzhanin (2012)

*Gypsochares astragalotes* (Meyrick, 1909)  
Afromoths: Kovtunovich & Ustjuzhanin (2012)

*Lantanophaga pusillidactylus* (Walker, 1864)  
Afromoths: Kovtunovich & Ustjuzhanin (2012)



*Marasmarcha bonaespei* (Walsingham, 1881)  
Afromoths: Kovtunovich & Ustjuzhanin (2012)

*Marasmarcha verax* (Meyrick, 1909)  
Afromoths: Kovtunovich & Ustjuzhanin (2012)

*Megalorhipida leptomeris* (Meyrick, 1886)  
Afromoths: Kovtunovich & Ustjuzhanin (2012)

*Megalorhipida leucodactylus* (Fabricius, 1794)  
Afromoths: Gielis (2003)

*Megalorhipida prolai* Gibeaux, 1994  
Afromoths: Gielis (2003)

*Megalorhipida subtilis* (Rebel, 1907)  
Afromoths: Kovtunovich & Ustjuzhanin (2012)

*Megalorhipida vivax* (Meyrick, 1909)  
Afromoths: Kovtunovich & Ustjuzhanin (2012)

*Platyptilia farfarellus* Zeller, 1867  
Afromoths: Kovtunovich & Ustjuzhanin (2012)

*Platyptilia longalis* (Walker, 1864)  
Afromoths: Kovtunovich & Ustjuzhanin (2012)

*Platyptilia sabius* (Felder & Rogenhofer, 1875)  
Afromoths: Kovtunovich & Ustjuzhanin (2012)

*Pseudoxyptilus secutor* (Meyrick, 1911)  
Afromoths: Kovtunovich & Ustjuzhanin (2012)



*Sphenarches anisodactylus* (Walker, 1864)  
Afromoths: Martin (1958)

*Stenodacma wahlbergi* (Zeller, 1852)  
Afromoths: Geertsema (1971)

*Stenoptilia johnistella* Ustjuzhanin & Kovtunovich, 2010  
Afromoths: Pinhey (1975)

*Stenoptilodes taprobanes* (Felder & Rogenhofer, 1875)  
Afromoths: Pinhey (1975)

*Titanoptilus stenodactylus* (Fletcher D. S., 1911)  
Afromoths: Naumann (2008)

*Walsinghamiella orichalcias* (Meyrick, 1916)  
Afromoths: Naumann (2008)

*Walsinghamiella prolai* (Gibeaux, 1994)  
Afromoths: Bartsch (2016)

*Xyroptila zambesi* Kovtunovich & Ustjuzhanin, 2006  
Afromoths: Bartsch (2016)

**Pyraloidea**

**Crambidae: Acentropinae**

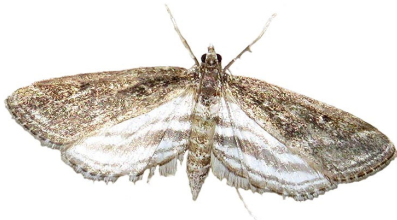
*Eoophyla belladotae* Agassiz, 2012  
UCT-ADU LepiMAP



*Eoophyla capensis* (Hampson, 1906)  
UCT-ADU LepiMAP



*Parapoynx fluctuosalis*  
UCT-ADU LepiMAP



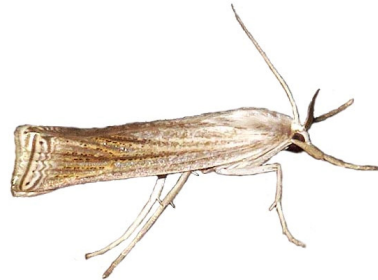
(female)

*Parapoynx stagnalis* (Zeller, 1852)  
UCT-ADU LepiMAP



**Crambidae: Crambinae: Ancyloiminiini**

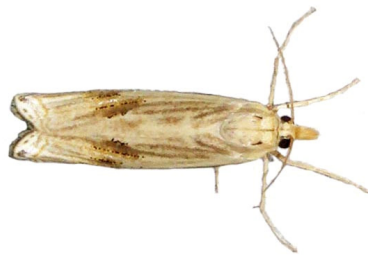
*Ancyloimia capensis* Zeller, 1852  
UCT-ADU LepiMap  
(*Ancyloimia chrysolinealis*)



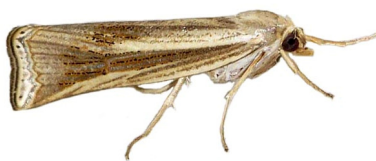
*Ancyloimia chryso-graphellus* (Kollar, 1844)  
UCT-ADU LepiMap



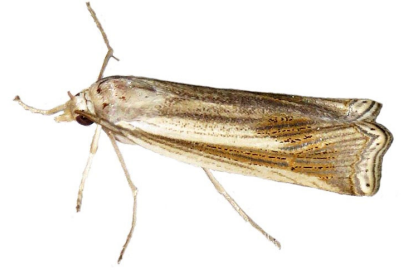
*Ancyloimia sp. c.f. lentifascialis* Hampson, 1910  
UCT-ADU LepiMap



*Ancyloimia pectinifera* Hampson, 1910  
UCT-ADU LepiMap



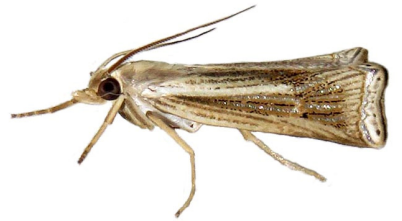
*Ancyloimia planicosta* Martin, 1956  
UCT-ADU LepiMap



*Ancyloimia prepiella* Hampson, 1919  
UCT-ADU LepiMap

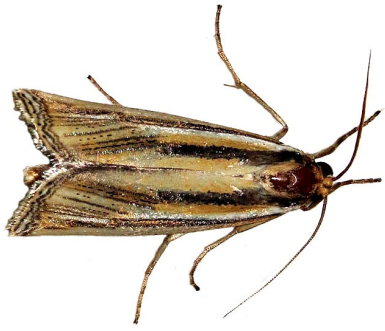


*Ancyloimia simplella* de Joannis, 1913  
UCT-ADU LepiMap



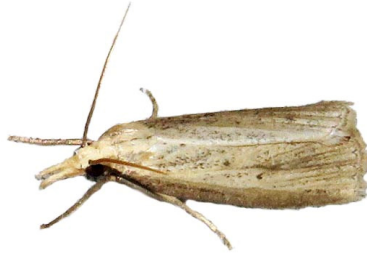
*Ancyloimia sp.*  
UCT-ADU LepiMap





*Aurotalis delicatalis* (Hampson, 1919)  
UCT-ADU LepiMAP

*Calamotropha* sp.  
UCT-ADU LepiMAP



*Classeya quadricuspis* (Hampson, 1919)  
UCT-ADU LepiMAP



**Crambidae: Crambinae: Chiloini**

*Chilo orichalcociliella* (Strand, 1911)  
UCT-ADU LepiMAP



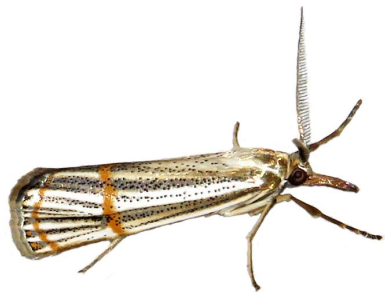
*Aurotalis nigrisquamalis* (Hampson, 1919)  
Afromoths: Bassi (2016)

*Pseudocatharylla angolica* Bleszyński, 1964  
UCT-ADU LepiMAP



**Crambidae: Crambinae: Crambini**

*Bassiknysna Jansei* (Bassi, 1999)  
UCT-ADU LepiMAP



**Crambidae: Crambinae: Calamotrophini**

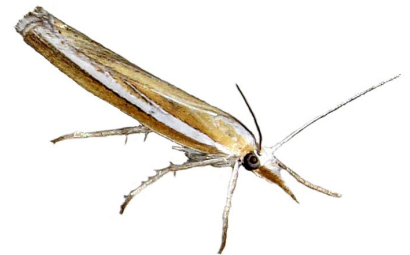
*Calamotropha* sp. *poss fuscivittalis*  
UCT-ADU LepiMAP

*Pseudocatharylla xymena* Bleszyński, 1964  
UCT-ADU LepiMAP



*Caffrocrambus polyphemus* Bassi, 2002  
Afromoths: Bassi (2002)

*Caffrocrambus* sp.  
UCT-ADU LepiMAP



*Calamotropha tripartita* (Hampson, 1919)  
UCT-ADU LepiMAP

*Pseudocatharylla* sp.  
UCT-ADU LepiMAP



*Crambus attis* Bassi, 2012  
UCT-ADU LepiMAP; Afromoths: Bassi (2012)





*Crambus diarthabellus* Hampson, 1919  
UCT-ADU LepiMAP



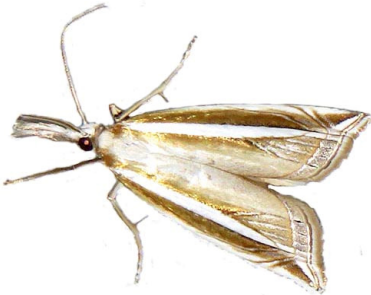
*Crambus ellipticellus* Hampson, 1919  
UCT-ADU LepiMAP



*Crambus leucochalis* Hampson, 1898  
UCT-ADU LepiMAP



*Crambus sp. c.f. leucochalis*  
UCT-ADU LepiMAP



*Crambus sparsellus* Walker, 1866  
UCT-ADU LepiMAP



*Crambus tenuistriga* Hampson, 1898  
UCT-ADU LepiMAP



*Crambus sp.*  
UCT-ADU LepiMAP



*Culladia achroellum* (Mabille, 1900)  
UCT-ADU LepiMAP



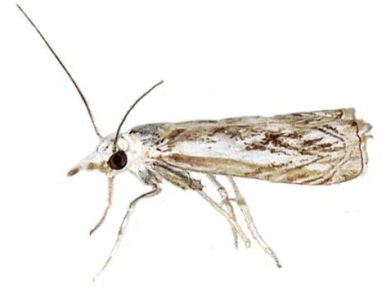
*Pediasia fulvitinctellus* (Hampson, 1896)  
UCT-ADU LepiMAP



*Pediasia sp.*  
UCT-ADU LepiMAP



*Sebrus absconditus* Bassi, 1995  
UCT-ADU LepiMAP

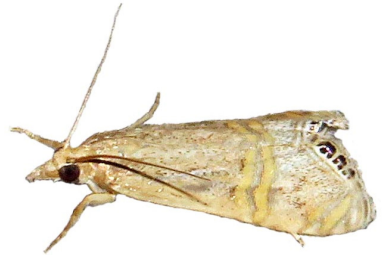


**Crambidae: Crambinae: Euchromiini**

*Euchromius nigrobasalis* Schouten, 1988  
UCT-ADU LepiMAP



*Euchromius sp.*  
UCT-ADU LepiMAP



**Crambidae: Crambinae: Haimbachiini**

*Coniesta sp*  
UCT-ADU LepiMAP



*Haimbachia unipunctalis* (Hampson, 1919)  
UCT-ADU LepiMAP



**Crambidae: Cybalomiinae**

*Trichophysetis whitei* Rebel, 1906  
UCT-ADU LepiMap



**Crambidae: Odontiinae**

*(Odontiinae?)*  
UCT-ADU LepiMap



**Crambidae: Odontiinae: Odontiini**

*Tegostoma bipartalis* Hampson, 1896  
UCT-ADU LepiMap



**Crambidae: Glaphyriinae**

*Crocidolomia pavonana* (Fabricius, 1794)  
UCT-ADU LepiMap



*Autocharis jacobsalis* (Marion & Viette, 1956)  
UCT-ADU LepiMap



*Tegostoma subditale* Zeller, 1852  
UCT-ADU LepiMap



**Crambidae: Glaphyriinae: Glaphyriini**

*Hellula undalis* (Fabricius, 1781)  
UCT-ADU LepiMAP



*Autocharis sinualis* (Hampson, 1899)  
UCT-ADU LepiMap



**Crambidae: Pyraustinae**  
*(not identified)*



**Crambidae: Musotiminae**

*Panotima angularis* (Hampson, 1897)  
UCT-ADU LepiMap  
*(Parthenodes angularis)*



**Crambidae: Odontiinae: Eurrhypini**

*Pseudonoorda rubricostalis* (Hampson, 1910)  
UCT-ADU LepiMap



*Viettessa margaritalis* (Hampson, 1899)  
UCT-ADU LepiMap





*Lirabotys prolausalis* (Walker, 1859)  
UCT-ADU LepiMAP



*Stenochora lancinalis* (Guenée, 1854)  
UCT-ADU LepiMAP



*Uresiphita gilvata* (Fabricius, 1794)  
UCT-ADU LepiMAP  
(*Uresiphita polygonalis*)



**Crambidae: Pyraustinae: Euclastini**

*Euclasta varii* Popescu-Gorj &  
Constantinescu, 1973  
UCT-ADU LepiMAP



**Crambidae: Pyraustinae:  
Portentomorphini**

*Isocentris charopalis* Swinhoe, 1907  
UCT-ADU LepiMAP  
(*Hyalobathra charopalis*)



*Pioneabathra olesialis* (Walker, 1859)  
UCT-ADU LepiMAP



**Crambidae: Pyraustinae: Pyraustini**

*Achyra coelatalis* (Walker, 1859)  
UCT-ADU LepiMAP



*Achyra nudalis* (Hübner, 1796)  
UCT-ADU LepiMAP



*Anania gobini* (Maes, 2005)  
AfroMoths: TMSA

*Loxostege frustalis* (Zeller, 1852)  
UCT-ADU LepiMAP



*Loxostege venustalis* (Cramer, 1782)  
UCT-ADU LepiMAP

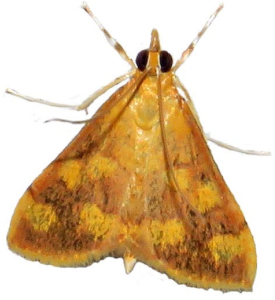


*Pagyda salvalis* Walker, 1958  
UCT-ADU LepiMAP



*Pyrausta apicalis* (Hampson, 1913)  
AfroMoths

*Pyrausta phoenicealis* (Hübner, 1818)  
UCT-ADU LepiMap



**Crambidae: Schoenobiinae**

*Calamoschoena stictalis* Hampson, 1919  
UCT-ADU LepiMap



*Patissa virginea* (Zeller, 1852)  
UCT-ADU LepiMap



**Crambidae Scopariinae**

*Scoparia sp.*  
UCT-ADU LepiMap



**Crambidae: Spilomelinae**

*Metoeca foedalis* (Guenée, 1854)  
UCT-ADU LepiMAP



*Nausinoe geometralis* (Guenée, 1854)  
UCT-ADU LepiMAP



*Pycnarmon cribratum* (Fabricius, 1794)  
UCT-ADU LepiMap



*Syllepte purpurascens* Hampson, 1899  
UCT-ADU LepiMAP



*Syllepte straminea* (Butler, 1875)  
UCT-ADU LepiMAP



*Syllepte vagans* (Tutt, 1890)  
Project Noah (Photos by Tina Petterson)  
(*Leucinodes vagans*)



**Crambidae: Spilomelinae: Agrotolini**

*Haritalodes derogata* (Fabricius, 1775)  
UCT-ADU LepiMAP



*Haritalodes polycymalis* (Hampson, 1912)  
UCT-ADU LepiMAP



*Haritalodes sp.*  
UCT-ADU LepiMap



*Notarcha quaternalis* (Zeller, 1852)  
UCT-ADU LepiMap



*Phostria bistigmalis* (Strand, 1913)  
UCT-ADU LepiMap



**Crambidae: Spilomelinae:  
Herpetogrammatini**

*Eurrhparodes bracteolalis* (Zeller, 1852)  
UCT-ADU LepiMap



*Eurrhparodes tricoloralis* (Zeller, 1852)  
UCT-ADU LepiMap



*Herpetogramma basalis* (Walker, 1866)  
UCT-ADU LepiMap



*Herpetogramma licarsisalis* (Guenée, 1854)  
UCT-ADU LepiMAP



*Herpetogramma mutualis* (Zeller, 1852)  
UCT-ADU LepiMAP



*Herpetogramma sp.*  
UCT-ADU LepiMAP



**Crambidae: Spilomelinae: Hydririni**

*Hydriris ornatalis* (Duponchel, 1832)  
UCT-ADU LepiMap



**Crambidae: Spilomelinae: Hymeniini**

*Spoladea recurvalis* (Fabricius, 1775)  
UCT-ADU LepiMap  
(*Spoladea fascialis*)



**Crambidae: Spilomelinae: Lineodini**

*Leucinodes laisalis* (Walker, 1859)  
UCT-ADU LepiMap



*Leucinodes pseudorbonalis* Mally, Korycinska,  
Agassiz, Hall, Hodgets, & Nuss, 2015  
UCT-ADU LepiMap

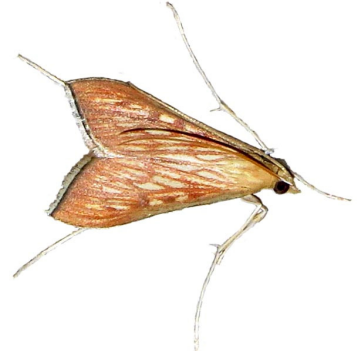


**Crambidae: Spilomelinae: Margaroniini**

*Agathodes musivalis* Guenée, 1854  
UCT-ADU LepiMap



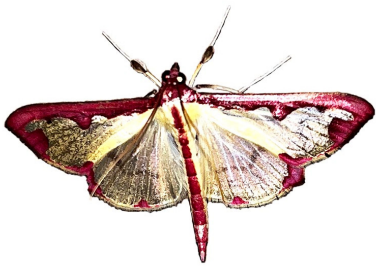
*Antigastra catalaunalis* (Duponchel, 1833)  
UCT-ADU LepiMap



*Antigastra morysalis* (Walker, 1859)  
UCT-ADU LepiMap



*Cadarena pudoraria* (Hübner, 1825)  
iNaturalist



*Glyphodes aniferalis* Hampson, 1909  
UCT-ADU LepiMap



*Glyphodes sycina* (Tams, 1941)  
UCT-ADU LepiMAP



*Cirrhochrista grabczewskyi* Hering, E., 1903  
UCT-ADU LepiMAP



*Glyphodes bicolor* (Swainson, 1821)  
UCT-ADU LepiMAP



*Hodebertia testalis* (Fabricius, 1794)  
UCT-ADU LepiMAP



*Diaphania indica* (Saunders, 1851)  
UCT-ADU LepiMAP



*Glyphodes negatalis* (Walker, 1859)  
UCT-ADU LepiMAP  
(*Dysallacta negatalis*)



*Maruca vitrata* (Fabricius, 1787)  
UCT-ADU LepiMAP



*Filodes costivitalis* Guenée, 1862  
Hermann Staude



*Glyphodes onychinalis* (Guenée, 1854)  
UCT-ADU LepiMAP



*Obtusipalpis pardalis* Hampson, 1896  
UCT-ADU LepiMAP



*Ghesquierellana hirtusalis* (Walker, 1859)  
UCT-ADU LepiMAP

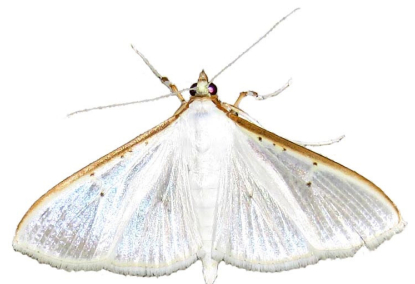


*Glyphodes stolalis* Guenée, 1854  
UCT-ADU LepiMAP



*Palpita elealis* (Walker, 1859)  
UCT-ADU LepiMAP

*Palpita vitrealis* (Rossi, 1794)  
UCT-ADU LepiMAP  
(*Palpita unionalis*)



***Parotis prasinalis*** (Saalmüller, 1880)  
UCT-ADU LepiMap



***Parotis prasinophila*** (Hampson, 1912)  
UCT-ADU LepiMap



***Parotis* sp.**  
UCT-ADU LepiMap



***Poliobotys ablactalis*** (Walker, 1859)  
UCT-ADU LepiMap  
(*Lamprophaia ablactalis*)



***Synclera traducalis*** (Zeller, 1852)  
UCT-ADU LepiMap



**Crambidae: Spilomelinae: Nomophilini**

***Bocchoris inspersalis*** (Zeller, 1852)  
UCT-ADU LepiMAP



***Diasemia disjectalis*** (Zeller, 1852)  
UCT-ADU LepiMap



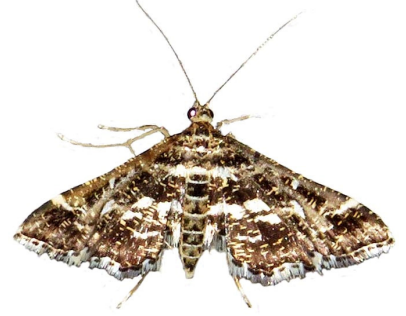
***Diasemia monostigma*** Hampson, 1913  
UCT-ADU LepiMap



***Diasemia trigonalis*** Hampson, 1913  
UCT-ADU LepiMAP



***Diasemiopsis ramburialis*** (Duponchel, 1834)  
UCT-ADU LepiMAP



***Mecyna procillusalis*** (Walker, 1859)  
Hermann Staude

***Nomophila noctuella*** (Denis & Schiffermüller, 1775)  
UCT-ADU LepiMAP



***Pardomima calixantha*** Martin, 1955  
UCT-ADU LepiMap



***Pardomima distortana*** (Strand, 1913)  
UCT-ADU LepiMap



***Sameodes cancellalis*** (Zeller, 1852)  
UCT-ADU LepiMap



*Sameodesma xanthocraspia* (Hampson, 1913)  
UCT-ADU LepiMap



*Syngamia falsidicalis* (Walker, 1859)  
UCT-ADU LepiMAP



*Syngamia sp.*  
UCT-ADU LepiMAP



**Crambidae: Spilomelinae: Spilomelini**

*Marasmia trapezalis* (Guenée, 1854)  
UCT-ADU LepiMap



*Orphanostigma abruptalis* (Walker, 1859)  
UCT-ADU LepiMap



**Crambidae: Spilomelinae: Steniini**

*Dolicharthria paediualis* (Walker, 1859)  
UCT-ADU LepiMAP



*Duponchelia fovealis* Zeller, 1847  
UCT-ADU LepiMAP



*Duponchelia lanceolalis* (Guenée, 1854)  
UCT-ADU LepiMAP  
(*Dolicharthria lanceolalis*)



**Crambidae: Spilomelinae: Trichaeini**

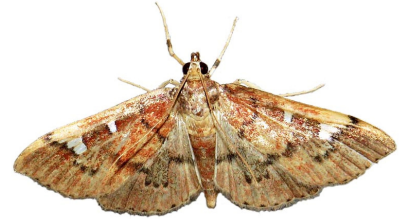
*Archernis flavidalis* Hampson, 1908  
UCT-ADU LepiMAP



*Prophantis smaragdina* (Butler, 1875)  
UCT-ADU LepiMap



*Prophantis sp.*  
UCT-ADU LepiMap



**Crambidae: Spilomelinae: Udeini**

*Udea ferrugalis* (Hübner, 1796)  
UCT-ADU LepiMap



*Udea infuscalis* (Zeller, 1852)  
UCT-ADU LepiMap



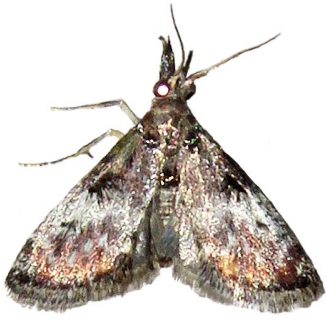
**Pyralidae: Epipaschiinae**

*Epilepia melanobrunnea* (Janse, 1922)  
UCT-ADU LepiMap





*Rhynchopaschia melanolopa* Hampson,  
1906  
UCT-ADU LepiMap



*Termioptycha fasciculata* (Hampson, 1906)  
Hermann Staude

**Pyralidae: Galleriinae**

*Galleria mellonella* (Linnaeus, 1758)  
UCT-ADU LepiMap



*Lamoria adaptella* (Walker, 1863)  
UCT-ADU LepiMap



*Lamoria imbella* (Walker, 1864)  
UCT-ADU LepiMap

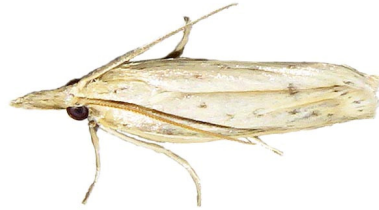


*Lamoria sp.*  
UCT-ADU LepiMap

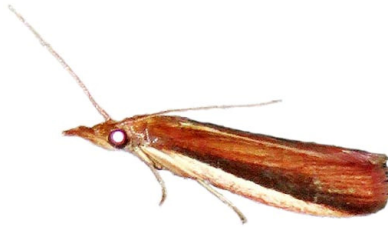


**Pyralidae: Phycitinae Anerastiini**

*Ematheudes sp.*  
UCT-ADU LepiMap



*Maliarpha concinnella* (Ragonot, 1888)  
UCT-ADU LepiMap



*Maliarpha separatella* Ragonot, 1888  
Afro-moths: Bartsch (2016)  
(*Biafra separatella*)

*Peoria sp.*  
UCT-ADU LepiMAP



*Villiersoides rosabella* Marion, 1957  
(tentative identification)  
iNaturalist



**Pyralidae: Phycitinae Phycitini**

*Acrobasis viridella* (Ragonot, 1888)  
(*Gaana viridella*, *Dysphyllia viridella*)  
UCT-ADU LepiMAP



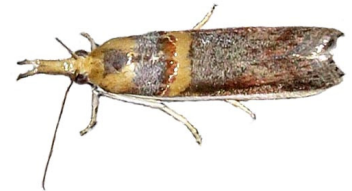
*Ancylosis interjectella* (Ragonot, 1888)  
UCT-ADU LepiMap



*Epicrocis sp.*  
UCT-ADU LepiMAP



*Etiella zinckenella* (Treitschke, 1832)  
UCT-ADU LepiMap



*Hypargyria metalliferella* Ragonot, 1888  
UCT-ADU LepiMap



*Lugbraphycita morosalis* (Saalmüller, 1880)  
UCT-ADU LepiMap



(*Pyralinae* – not identified)  
UCT-ADU LepiMap

*Delopterus basalis* Janse, 1922  
Hermann Staude



*Delopterus sp. 1*  
UCT-ADU LepiMap



*Delopterus sp. 2*  
UCT-ADU LepiMap



*Melanalis perfusca* Hampson, 1906  
UCT-ADU LepiMap



*Melanalis sp.*  
UCT-ADU LepiMap  
(*Calomacalla sp.*)



*Mittonia hampsoni* (Distant, 1897)  
BOLD



*Sphalerosticha oblunata* Warren, 1897  
UCT-ADU LepiMap  
(*Zitha oblunata*, *Tegulifera oblunata*)



*Stemmatophora chloralis* Hampson, 1917  
Hermann Staude



*Tyndis sp.*  
UCT-ADU LepiMAP



Pyralidae: Pyralinae: Endotrichini  
*Endotricha consobrinialis consobrinialis* Zeller,  
1852  
UCT-ADU LepiMap



*Endotricha erythralis* Mabilie, 1900  
UCT-ADU LepiMap



*Endotricha sp.*  
UCT-ADU LepiMap

Pyralidae: Pyralinae: Pyralini

*Aglossa inconspicua* Butler, 1875  
Malolotja and Mlawula Checklists  
(*Hypaena inconspicua*)



*Aglossa incultalis* Zeller, 1852  
UCT-ADU LepiMap

*Aglossa phaealis* Hampson, 1906  
UCT-ADU LepiMAP



*Bostra albilineata* Warren, 1891  
UCT-ADU LepiMAP



***Bostra dentilinealis*** Hampson, 1917  
UCT-ADU LepiMap



***Hypsopygia nostralis*** (Guenée, 1854)  
UCT-ADU LepiMap



***Maradana atrisparsalis*** (Hampson, 1906)  
UCT-ADU LepiMap  
(*Paractenia atrisparsalis*)



***Bostra xanthorhodalis*** Hampson, 1906  
UCT-ADU LepiMap



***Loryma basalis*** (Walker, 1866)  
UCT-ADU LepiMap  
(*Aglossa basalis*)



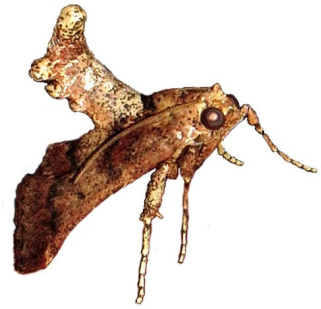
***Pyralis albilautalis*** Warren, 1891  
UCT-ADU LepiMap



***Bostra sp. 1***  
UCT-ADU LepiMap



***Stemmatophora achromalis*** (Hampson, 1906)  
UCT-ADU LepiMap  
(*Actenia achromalis*)



***Bostra sp. 2***  
UCT-ADU LepiMap



***Loryma sentiusalis*** Walker, 1859  
UCT-ADU LepiMap



***Stemmatophora depressalis*** Walker, 1862  
UCT-ADU LepiMap



***Hypotia aglossalis*** (Hampson, 1906)  
UCT-ADU LepiMap



***Loryma sp. 1***  
UCT-ADU LepiMap



***Zitha allutalis*** (Zeller, 1852)  
UCT-ADU LepiMAP  
(*Aglossa ignalis*)



***Zitha ignalis*** (Guenée, 1854)  
UCT-ADU LepiMAP  
(*Aglossa ignalis*)



***Zitha zonalis*** (Warren, 1897)  
UCT-ADU LepiMAP  
(*Tegulifera zonalis*)



**Thyridoidea**

**Thyrididae: Charideinae**

(not identified)

UCT-ADU LepiMAP



***Arniocera auriguttata*** Hopffer, 1857  
Malolotja and Mlawula Checklists



***Arniocera erythropyga*** (Wallengren, 1860)  
Malolotja and Mlawula Checklists



**Thyrididae: Siculodinae**

***Cecidothyris* sp.**

UCT-ADU LepiMAP



***Hypolamprus gangaba*** Whalley, 1971  
iNaturalist



***Kuja squamigera*** (Pagenstecher, 1892)  
UCT-ADU LepiMAP



***Rhodoneura flavicilia*** Hampson, 1906  
UCT-ADU LepiMap



**Tineoidea**

**Eriocottidae: Compsocteninae**

***Compsoctena aedifica*** (Meyrick, 1908)  
UCT-ADU LepiMap Swaziland Species List  
Nov 2016



***Compsoctena brachytenis*** (Meyrick, 1909)  
iNaturalist



***Compsoctena* sp.**  
UCT-ADU LepiMAP



**Psychidae: Oiketinae**

***Eumeta cervina*** Druce, 1887  
iNaturalist

**Psychidae: Psychinae**

***Psyche pinicola*** (Meyrick, 1937)  
BOLD

**Tineidae: Hieroxestinae**

*Amphixystis* sp.  
UCT-ADU LepiMap



**Tineidae: Tineinae**

*Ceratophaga vastellus* (Zeller, 1852)  
iNaturalist

*Monopis lamprostola* Meyrick, 1918  
UCT-ADU LepiMap



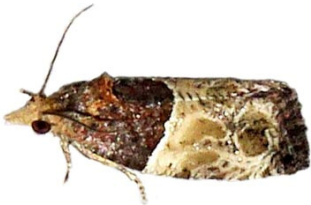
**Tortricidae**

**Tortricidae: Olethreutinae: Enarmoniini**

*Neaspasia brevibasana* (Walsingham, 1891)  
UCT-ADU LepiMap



*Neaspasia orthacta* (Meyrick, 1908)  
UCT-ADU LepiMap



**Tortricidae: Olethreutinae: Eucosmini**

*Crociosema plebejana* Zeller, 1847  
UCT-ADU LepiMap



**Tortricidae: Olethreutinae: Grapholitini**

*Thaumatotibia batrachopa* (Meyrick, 1908)  
UCT-ADU LepiMap



*Thaumatotibia leucotreta* (Meyrick, 1913)  
UCT-ADU LepiMap



**Tortricidae: Olethreutinae: Olethreutini**

(not identified)  
UCT-ADU LepiMap

*Astronauta stellans* (Meyrick, 1922)  
UCT-ADU LepiMap



*Celypha sistrata* (Meyrick, 1911)  
UCT-ADU LepiMAP



*Cosmorrhyncha ocellata* (Mabille, 1900)  
UCT-ADU LepiMAP



*Eccopsis incultana* (Walker, 1863)  
UCT-ADU LepiMAP



*Malolotia malolotiana* Razowski, 2015  
Afro moths: TMSA

*Megalota lobotona* (Meyrick, 1921)  
Afro moths: TMSA

*Metendothenia balanacma* (Meyrick, 1914)  
Afro moths: TMSA

*Promodra prodroma* (Meyrick, 1913)  
UCT-ADU LepiMAP



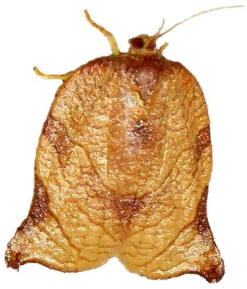
**Tortricidae: Tortricinae: Archipini**

*Choristoneura heliaspis* (Meyrick, 1909)  
UCT-ADU LepiMap



*Choristoneura occidentalis* (Walsingham, 1891)  
UCT-ADU LepiMap





**Clepsis gnathocera** Razowski, 2006  
Afromoths: TMSA

**Clepsis hedrastis (Meyrick, 1908)**  
UCT-ADU LepiMap

Clepsis prona is similar to Clepsis hedrastis, and cannot be reliably separated externally. However, Clepsis prona tends to have the markings of the forewings darker and more strongly developed. (Aarvick, 2019)



**Clepsis prona** (Meyrick, 1911)  
UCT-ADU LepiMap



**Lozotaenia capensana** (Walker, 1963)  
(*Epichoristodes capensana*)  
(*Cacoecia dorsiplagana*)  
(*Cacoecia adustana*)  
A thorough revision of this group is needed.  
UCT-ADU LepiMAP

**Epichoristodes adustana** (Walsingham, 1881)  
UCT-ADU LepiMAP

**Epichoristodes dorsiplagana** (Walsingham, 1881)  
UCT-ADU LepiMAP



**Orilesa olearis** (Meyrick, 1912)  
Afromoths: TMSA

**Tortricidae: Tortricinae: Cnephasiini**

**Cnephasia opsarias** Meyrick, 1911  
UCT-ADU LepiMap



**Tortricidae: Tortricinae: Tortricini**

(*not identified*)  
UCT-ADU LepiMap

**Yponomeutoidea**

**Plutellidae**

(Antennae bend forwards)

**Plutella xylostella** (Linnaeus, 1758)  
UCT-ADU LepiMap



**Yponomeutidae: Yponomeutinae**

**Yponomeuta fumigatus** Zeller, 1852  
Malolotja and Mlawula Checklists  
(*Yponomeuta glaphyropis*)

**Yponomeuta puncticornis** Walsingham, 1891  
Agassiz, 2019

**Yponomeuta sistrophora** Meyrick, 1909  
Agassiz, 2019

**Yponomeuta strigillatus** Zeller, 1852  
Malolotja and Mlawula Checklists



**Yponomeuta subplumbella** Walsingham, 1881  
Agassiz, 2019

**Zygaenoidea**

**Lacturidae**

(*Lacturidae – not identified*)  
UCT-ADU LepiMap

**Gymnogramma pyrozancla** Meyrick, 1911  
Project Noah (Photos by Tina Petterson)

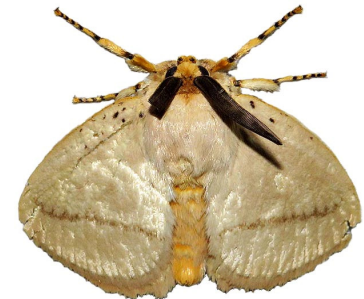


**Gymnogramma sp.?**  
UCT-ADU LepiMap

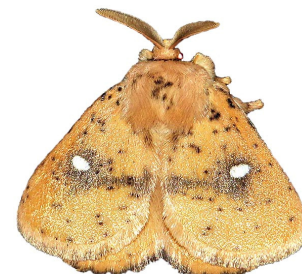


**Limacodidae: Chrysopolominae**

**Chrysopoloma restricta** Distant, 1899  
UCT-ADU LepiMap



**Hamartia medora medora** Hering, 1937  
Malolotja and Mlawula Checklists  
(*Hamartia medora*)



**Limacodidae: Limacodinae**

***Afrobirthama flaccidia*** (Druce, 1899)  
UCT-ADU LepiMap



***Brachypecta perobliqua*** Janse, 1964  
UCT-ADU LepiMAP



***Coenobasis albiramosa*** (Walker, 1865)  
iNaturalist

***Coenobasis amoena*** Felder, 1874  
UCT-ADU LepiMap Swaziland Species List  
Nov 2016



***Crothaema schoutedeni*** Hering, 1954  
Malolotja and Mlawula Checklists

***Latoia latistriga*** (Walker, 1855)  
Malolotja and Mlawula Checklists



***Latoia vivida*** (Walker, 1865)  
Malolotja and Mlawula Checklists



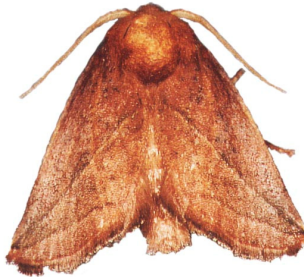
***Micraphe lateritia*** Karsch, 1896  
UCT-ADU LepiMap



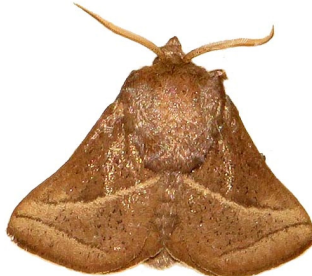
***Neogavara imitans*** Janse, 1964  
Malolotja and Mlawula Checklists



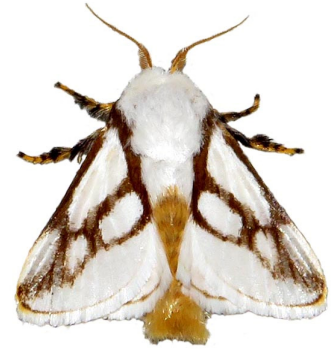
***Neomocena convergens*** (Hering, 1928)  
Malolotja and Mlawula Checklists



***Omocenoides isophanes*** Janse, 1964  
UCT-ADU LepiMap



***Parapluda invitabilis*** (Wallengren, 1860)  
UCT-ADU LepiMap



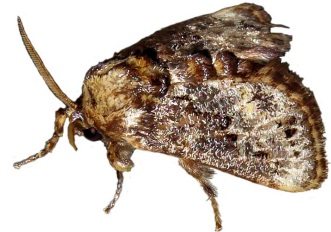
(male)



(female)

***Probalintha inclusa*** Walker, 1865  
Afro-moths: TMSA

***Scotinochroa inconsequens*** Butler, 1897  
UCT-ADU LepiMAP



***Taeda aetitis*** Wallengren, 1863  
Afro-moths: Krüger (2005)



***Taeda gemmans*** (Felder, 1874)  
UCT-ADU LepiMAP  
(*Pantoctenia gemmans*)



***Zorostola melanoxantha*** Janse, 1964  
Afromoths: Hacker (2016)



\*

**Zygaenidae: Procridinae**

***Janseola titaea*** (Druce, 1896)  
Hermann Staude

***Unknown (Limacodinae?)***

